

06-14-2019 LETTING ITEM 240

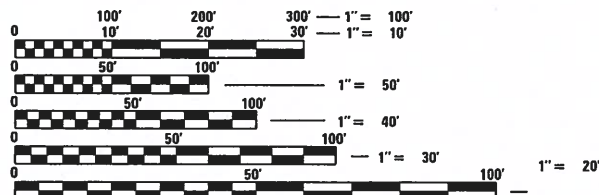
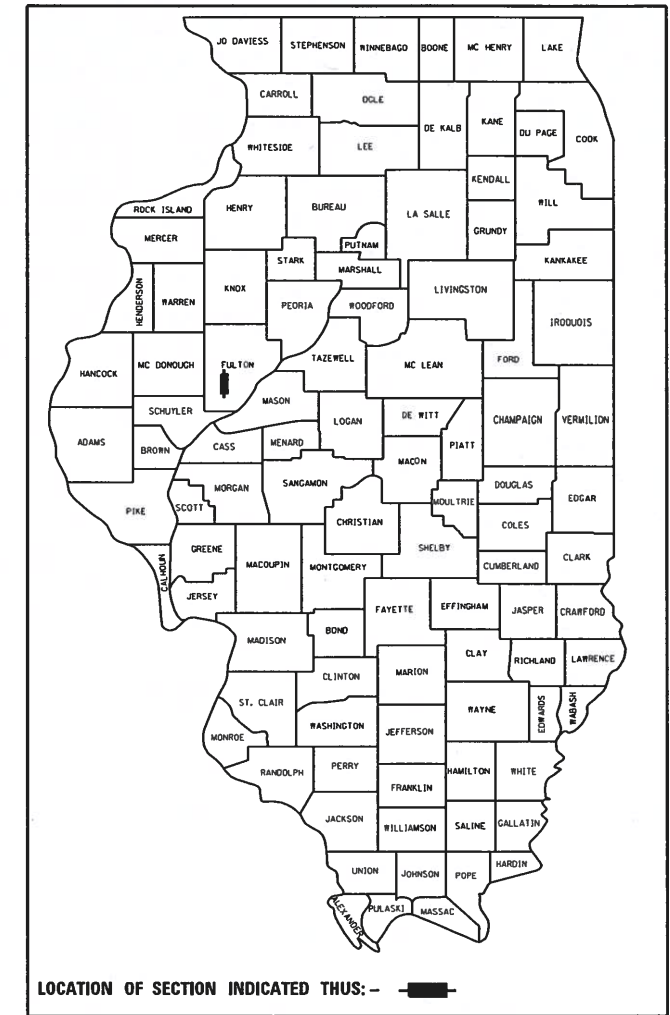
STATE OF ILLINOIS
DEPARTMENT OF TRANSPORTATION

PLANS FOR PROPOSED
FEDERAL-AID PROJECT

FAS 452 (CH 2)
SECTION 14-00130-13-RS
PROJECT NO. 6GK6(731)
FULTON COUNTY
PROCESSING MODIFIED SOIL AND HMA RESURFACING
C-94-034-18

FOR INDEX OF SHEETS, SEE SHEET NO. 2
FOR LIST OF HIGHWAY STANDARDS, SEE SHEET NO. 2
FOR SUMMARY OF QUANTITIES, SEE SHEET NO. 3 THROUGH 6

F.A.S. RTE.	SECTION	COUNTY	TOTAL SHEETS	SHEET NO.
452	14-00130-13-RS	FULTON	18	1
FEDERAL AID PROJECT		ILLINOIS	CONTRACT NO. 89742	

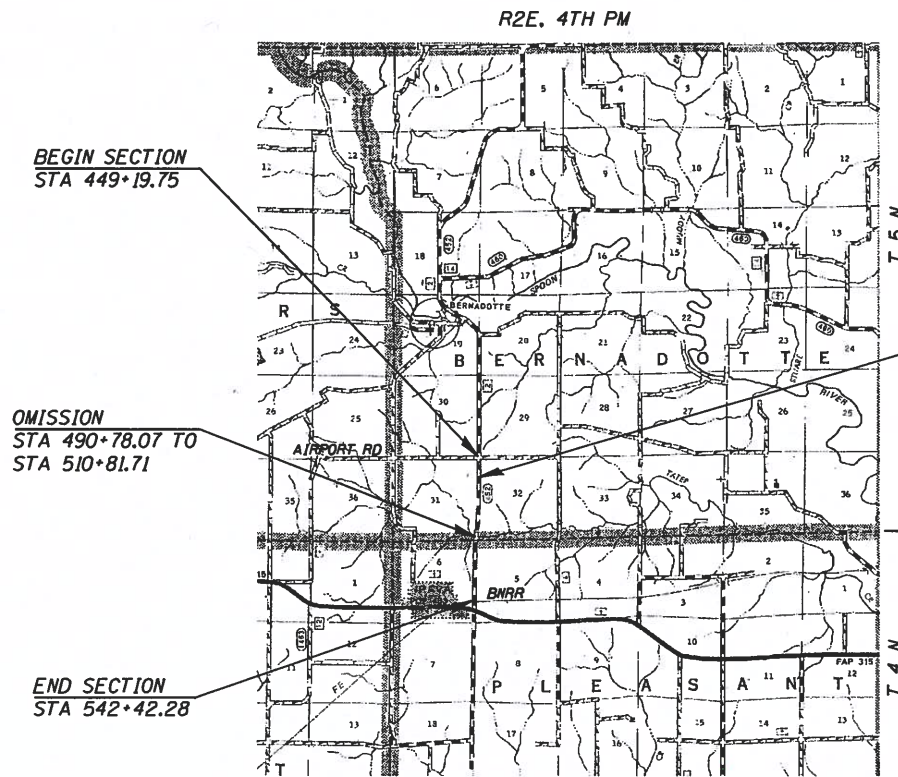


FULL SIZE PLANS HAVE BEEN PREPARED USING STANDARD ENGINEERING SCALES. REDUCED SIZED PLANS WILL NOT CONFORM TO STANDARD SCALES. IN MAKING MEASUREMENTS ON REDUCED PLANS, THE ABOVE SCALES MAY BE USED.

J.U.L.I.E.
JOINT UTILITY LOCATION INFORMATION FOR EXCAVATION
1-800-892-0123
OR 811



CATALOG NO. 035561-000



STA 467+74.00
PROPOSED PIPE CULVERTS,
CLASS A, TYPE 1 48"
W/ STANDARD 542.301 END SECTIONS
PROPOSED MANHOLES, 6' DIAMETER,
W/ TYPE 1 FRAME, CLOSED LID

LAYOUT
Total Project Length = 9,322.53 Feet = 1.766 Miles
Net Length of Section = 7,318.89 Feet = 1.386 Miles

SCALE IN MILES

FUNCTIONAL CLASSIFICATION : MAJOR COLLECTOR
DESIGN SPEED 40 MPH
CURRENT ADT= 500 (2015)



K.S. Cummins 3-15-19
ILLINOIS PROFESSIONAL NO. 56816
(Expires 11/30/19)

STATE OF ILLINOIS
DEPARTMENT OF TRANSPORTATION

APPROVED *March 15* 2019

[Signature]
FULTON COUNTY ENGINEER

PASSED *April 4* 2019

[Signature]
DISTRICT FOUR ENGINEER OF
LOCAL ROADS AND STREETS

RELEASED FOR
BID BASED ON
LIMITED REVIEW *April 5* 2019

Kensie A. Barnett
REGION THREE ENGINEER

PRINTED BY THE AUTHORITY
OF THE STATE OF ILLINOIS

INDEX OF SHEETS

1 COVER SHEET
 2 INDEX OF SHEETS, HIGHWAY STANDARDS AND GENERAL NOTES
 3-4 SUMMARY OF QUANTITIES
 5 TYPICAL CROSS SECTIONS
 6-7 SCHEDULE OF QUANTITIES
 8 ALIGNMENT
 9-10 PLAN & PROFILE SHEETS
 11 BUTT JOINT DETAIL
 12 ENTRANCE & SIDEROAD DETAILS
 13 MAILBOX TURNOUT DETAILS
 14-18 CROSS SECTIONS

LIST OF ILLINOIS DOT HIGHWAY STANDARDS

000001-07	STANDARD SYMBOLS, ABBREVIATIONS AND PATTERNS
280001-07	TEMPORARY EROSION CONTROL SYSTEMS
542301-03	PRECAST REINFORCED CONCRETE FLARED END SECTION
602406-10	PRECAST MANHOLE TYPE A 6' DIAMETER
602601-06	PRECAST REINFORCED CONCRETE FLAT SLAB TOP
602701-02	MANHOLE STEPS
604001-04	FRAME AND LIDS TYPE 1
701306-04	LANE CLOSURE, 2L, 2W, SLOW MOVING OPERATIONS DAY ONLY, FOR SPEEDS > 45 MPH
701901-08	TRAFFIC CONTROL DEVICES
780001-05	TYPICAL PAVEMENT MARKINGS
BLR 21-9	TYPICAL APPLICATION OF TRAFFIC CONTROL DEVICES FOR CONSTRUCTION ON RURAL LOCAL HIGHWAYS

GENERAL NOTES

ENVIRONMENTAL REVIEWS

PRIOR TO THE USE OF ANY PROPOSED BORROW AREAS, USE AREAS (TEMPORARY ACCESS ROADS, DETOURS, RUN-AROUNDS, ETC.) AND/OR WASTE AREAS, THE CONTRACTOR SHALL FILE THE REQUIRED ENVIRONMENTAL RESOURCE REQUEST SURVEYS ACCORDING TO SECTION 107.22 OF THE STANDARD SPECIFICATIONS. THESE SURVEYS ARE REQUIRED IN ORDER FOR THE DEPARTMENT TO CONDUCT CULTURAL AND BIOLOGICAL RESOURCE SURVEYS FOR THE PROPOSED SITE.

THE REQUIRED ENVIRONMENTAL RESOURCE DOCUMENTATION SHALL INCLUDE THE FOLLOWING:

- * BDE FORM 2289 (CULTURAL AND NATURAL RESOURCES REVIEW OF BORROW AREAS)
- * BDE FORM 2290 (WASTE/USE AREA REVIEW)
- * A LOCATION MAP SHOWING THE SIZE LIMITS AND LOCATION OF THE USE AREA
- * COLOR PHOTOGRAPHS DEPICTING THE USE AREA
- * BORROW AREA ENTRY AGREEMENT FORM - D4 PI0101

PRIOR TO ANY WASTE MATERIALS BEING REMOVED FROM THE CONSTRUCTION SITE THE REQUIRED ENVIRONMENTAL RESOURCE SURVEYS SHALL BE OBTAINED AND FILED BY THE CONTRACTOR. EXCESS WASTE PRODUCTS REMOVED FROM THE CONSTRUCTION SITE SHALL BE DISPOSED OF AS REQUIRED IN SECTION 202.03 OF THE STANDARD SPECIFICATIONS.

ANY PROTRUDING METAL BARS SHALL BE REMOVED PRIOR TO THE DISPOSAL OF BROKEN CONCRETE AT APPROVED DISPOSAL SITES.

PLEASE NOTE THAT A MINIMUM OF FOUR WEEKS SHALL BE ALLOWED FOR THE DISTRICT TO OBTAIN THE REQUIRED ENVIRONMENTAL CLEARANCES AND SIX WEEKS FOR THE REQUIRED BORROW SITE ENVIRONMENTAL CLEARANCES.

AGGREGATE SURFACE COURSE, TYPE B

AGGREGATE SURFACE COURSE, TYPE B SHALL BE REQUIRED FOR ALL GRANULAR CONSTRUCTION OF SIDE ROADS, ENTRANCES, AND MAILBOX TURNOUTS, WHETHER OR NOT PORTIONS OF THE SURFACES THUS CONSTRUCTED ARE TO BE COVERED WITH A BITUMINOUS SURFACE, EXCEPT WHERE NOTED DIFFERENTLY ON THE PLANS.

HOT-MIX ASPHALT MIXTURE REQUIREMENTS

LOCATION	CH 2	CH 2
MIXTURE USE	SURFACE & INCIDENTAL	BINDER
AC/PG	PG 64-22	PG 64-22
DESIGN AIR VOIDS	4.0 @ NDESIGN = 50	4.0 @ NDESIGN = 50
MIX COMP (GRADATION)	IL 9.5	IL 19.0
FRICTION AGGREGATE	MIX C	N.A.
MIXTURE WEIGHT	112	112
QUALITY MANAGEMENT PROGRAM	QCQA	QCQA
SUBLOT SIZE	N.A.	N.A.

NOTES:

- 1) INDIVIDUAL LIFT THICKNESS OF EACH MIX TYPE WILL BE NO LESS THAN 3 TIMES NOMINAL MAXIMUM AGGREGATE SIZE AND NO MORE THAN 6 TIMES NOMINAL MAXIMUM.
- 2) FOR DESIGN PURPOSES, MIXTURE WEIGHT FOR ALL MIXES IS DETERMINED TO BE 112.0 LB./S.Y./IN., UNLESS OTHERWISE NOTED.
- 3) SUBLOT SIZES FOR PFP AND QCP MIXES WILL BE 1,000 TONS, UNLESS OTHERWISE AGREED TO BY THE ENGINEER AND THE PAVING CONTRACTOR.

PAVING SURFACE COURSE

CONTINUOUS PAVING OPERATIONS ON THE MAIN ROADWAY SHALL BE MAINTAINED AT ALL TIMES DURING THE CONSTRUCTION OF THE HOT-MIX ASPHALT SURFACE. NO INTERRUPTIONS FOR SIDE ROADS, ENTRANCES, TURN LANES, ETC. WILL BE ALLOWED.

ORDERING LENGTH CONFIRMATION - DRAINAGE ITEMS

THE CONTRACTOR SHALL CONSULT WITH THE ENGINEER IN REGARD TO THE EXACT LENGTH OF THE BOXPIPE CULVERTS, STORM SEWERS, AND/OR PIPE DRAINS REQUIRED PRIOR TO ORDERING THESE ITEMS.

THE AREA TO BE SEEDED SHALL CONSIST OF ALL DISTURBED EARTH SURFACES WITHIN THE RIGHT OF WAY AS DIRECTED BY THE ENGINEER.

ALL ELEVATIONS SHOWN IN THE PLANS ARE BASED ON NORTH AMERICAN VERTICAL DATUM OF 1988 (NAVD 88)

LAYOUT OF EROSION CONTROL ITEMS MAY BE VARIED IN THE FIELD TO SUIT GROUND CONDITIONS AS DIRECTED BY THE ENGINEER.

APPLICATION RATES

GRANULAR MATERIALS	2.05 TONS/CU YD
TEMPORARY EROSION CONTROL SEEDING	100 LBS/ACRE
HOT-MIX ASPHALT	112 LBS/SQ YD/IN
PORTLAND CEMENT	75 LBS/SQ YD
BITUMINOUS MATERIALS (PRIME COAT)	0.25 LBS/SQ FT
POLYMERIZED BITUMINOUS MATERIALS (TACK COAT)	0.08 LBS/SQ FT

THIS SECTION SHALL BE CONSTRUCTED IN ACCORDANCE WITH THE PLANS, THE STANDARD SPECIFICATIONS FOR ROAD AND BRIDGE CONSTRUCTION ADOPTED APRIL 1, 2016, THE SUPPLEMENTAL SPECIFICATIONS AND RECURRING SPECIAL PROVISIONS, AND THE SPECIAL PROVISIONS INCLUDED IN THESE PLANS.

ANY REFERENCE TO THE STANDARDS THROUGHOUT THE PLANS SHALL BE INTERPRETED TO BE THE EDITION, AS INDICATED BY THE SUB-NUMBER, LISTED IN THE INDEX OF SHEETS, OR THE COPY OF THE STANDARD INCLUDED IN THESE PLANS.

THE CONTRACTOR SHALL BE RESPONSIBLE FOR REPAIRS TO ANY UTILITY LINES AND EXISTING IMPROVEMENTS TO REMAIN THAT ARE DAMAGED AS A RESULT OF THE WORK.

THE LOCATION OF THOSE BURIED AND ABOVE GROUND UTILITIES SHOWN ARE APPROXIMATE. THE CONTRACTOR SHALL BE RESPONSIBLE FOR PROTECTING UTILITY PROPERTY FROM CONSTRUCTION OPERATIONS AS OUTLINED IN ARTICLE 107.26 OF THE STANDARD SPECIFICATIONS. THE J.U.L.I.E NUMBER IS 1 (800) 892-0123. A MINIMUM 48 HOURS ADVANCE NOTICE IS REQUIRED. SEE SPECIAL PROVISIONS FOR STATUS OF UTILITIES WITH UTILITY COMPANIES LISTED.

PROPERTY OWNER ACCESS REQUIREMENT

ACCESS MUST BE MAINTAINED TO ALL EXISTING PROPERTIES DURING CONSTRUCTION PER ARTICLE 107.09 UNLESS ARRANGEMENTS ARE MADE IN WRITING BY THE CONTRACTOR WITH THE PROPERTY OWNERS WITH A COPY TO THE ENGINEER FOR SHORT-TERM CLOSURES.

COMMITMENTS

COMMITMENTS ARE NOT TO BE ALTERED WITHOUT THE WRITTEN APPROVAL OF ALL PARTIES TO WHICH THE COMMITMENT WAS MADE.



JOB = 2585	DESIGNED - CGF	REVISED -
FILE NAME = 2238-gen.dgn	DRAWN - SJS	REVISED -
PLOT SCALE = 100.0000 "/>		
PLOT DATE = 3/15/2019	DATE - 12/03/2018	REVISED -

**STATE OF ILLINOIS
DEPARTMENT OF TRANSPORTATION**

INDEX OF SHEETS, HIGHWAY STANDARDS AND GENERAL NOTES

SCALE: SHEET NO. OF SHEETS STA. TO STA.

F.A.S. RTE.	SECTION	COUNTY	TOTAL SHEETS	SHEET NO.
452	14-00130-13-RS	FULTON	18	2
CONTRACT NO. 89742				
FED. ROAD DIST. NO. ILLINOIS FED. AID PROJECT				

SUMMARY OF QUANTITIES

CODE NO.	ITEM	UNIT	TOTAL QUANTITY	CONSTRUCTION CODE	
				80% FEDERAL 20% LOCAL ROADWAY 0005 RURAL	
20200100	EARTH EXCAVATION	CU YD	390	390	
20400800	FURNISHED EXCAVATION	CU YD	545	545	
20600110	GRANULAR EMBANKMENT, SPECIAL	TON	267	267	
20800150	TRENCH BACKFILL	CU YD	23	23	
25100900	TURF REINFORCEMENT MAT	SQ YD	184	184	
28000250	TEMPORARY EROSION CONTROL SEEDING	POUND	33	33	
28000400	PERIMETER EROSION BARRIER	FOOT	2,410	2,410	
Δ 30200650	PROCESSING MODIFIED SOIL 12"	SQ YD	21,143	21,143	
35101400	AGGREGATE BASE COURSE, TYPE B	TON	44	44	
Δ 35200500	CEMENT	CWT	15,858	15,858	
40200800	AGGREGATE SURFACE COURSE, TYPE B	TON	46	46	
40600275	BITUMINOUS MATERIALS (PRIME COAT)	POUND	46,186	46,186	
40600295	POLYMERIZED BITUMINOUS MATERIALS (TACK COAT)	POUND	14,605	14,605	
40600982	HOT-MIX ASPHALT SURFACE REMOVAL - BUTT JOINT	SQ YD	915	915	
40600990	TEMPORARY RAMP	SQ YD	149	149	
40603080	HOT-MIX ASPHALT BINDER COURSE, 1L-19.0, N50	TON	2,836	2,836	

• SEE SPECIAL PROVISIONS

Δ DENOTES SPECIALTY ITEM



JOB = 2585	DESIGNED - CGF	REVISED -
FILE NAME = 2238soq.dgn	DRAWN - SJS	REVISED -
PLOT SCALE = 20.0000' / IN.	CHECKED - NAK	REVISED -
PLOT DATE = 3/15/2019	DATE - 12/03/2018	REVISED -

STATE OF ILLINOIS
DEPARTMENT OF TRANSPORTATION

SUMMARY OF QUANTITIES

SCALE: SHEET NO. OF SHEETS STA. TO STA.

F.A.S. RTE.	SECTION	COUNTY	TOTAL SHEETS	SHEET NO.
452	14-00130-13-RS	FULTON	18	3
FED. ROAD DIST. NO.			ILLINOIS FED. AID PROJECT	
			CONTRACT NO. 89742	

SUMMARY OF QUANTITIES

CONSTRUCTION CODE
80% FEDERAL 20% LOCAL ROADWAY 0005 RURAL

CODE NO.	ITEM	UNIT	TOTAL QUANTITY	
40603310	HOT-MIX ASPHALT SURFACE COURSE, MIX "C", N50	TON	1,693	1,693
40800050	INCIDENTAL HOT-MIX ASPHALT SURFACING	TON	72	72
48101200	AGGREGATE SHOULDERS, TYPE B	TON	1,111	1,111
50105220	PIPE CULVERT REMOVAL	FOOT	82	82
542A0253	PIPE CULVERTS, CLASS A, TYPE 1 48"	FOOT	103	103
54213693	PRECAST REINFORCED CONCRETE FLARED END SECTIONS 48"	EACH	2	2
60223800	MANHOLES, TYPE A, 6'-DIAMETER, TYPE 1 FRAME, CLOSED LID	EACH	1	1
67100100	MOBILIZATION	L SUM	1	1
70100460	TRAFFIC CONTROL AND PROTECTION, STANDARD 701306	L SUM	1	1
70300100	SHORT-TERM PAVEMENT MARKING	FOOT	2,028	2,028
70300150	SHORT-TERM PAVEMENT MARKING REMOVAL	SQ FT	225	225
△ 78001110	PAINT PAVEMENT MARKING - LINE 4"	FOOT	20,856	20,856
• LR403300	SURFACE PROFILE MILLING	SQ YD	19,517	19,517
• X2501000	SEEDING, CLASS 2 (SPECIAL)	ACRE	0.50	0.50
• X7010216	TRAFFIC CONTROL AND PROTECTION, (SPECIAL)	L SUM	1	1
Z0013798	CONSTRUCTION LAYOUT	L SUM	1	1
• Z0048665	RAILROAD PROTECTIVE LIABILITY INSURANCE	L SUM	1	1

• SEE SPECIAL PROVISIONS

△ DENOTES SPECIALTY ITEM



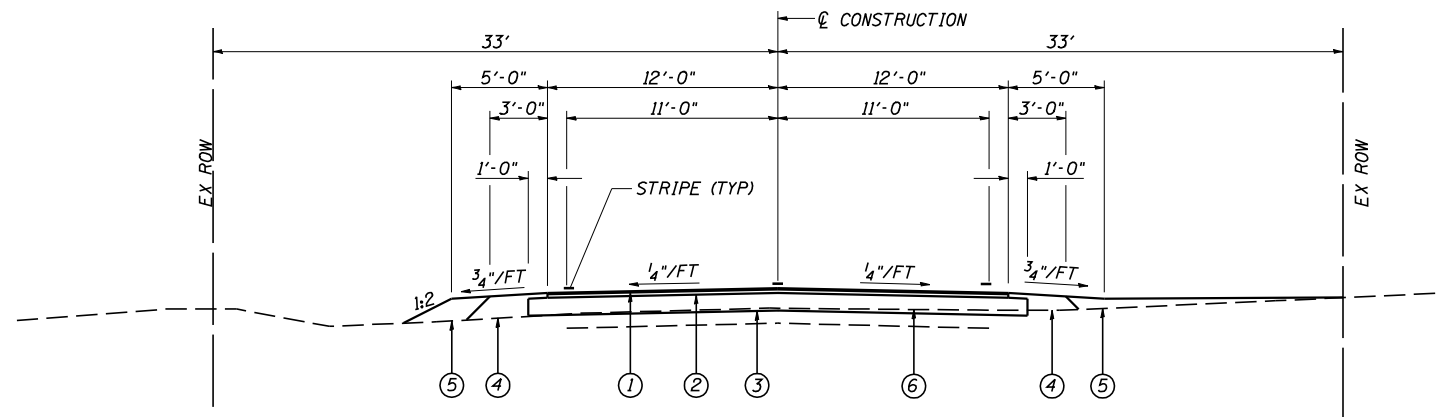
JOB = 2585	DESIGNED - CGF	REVISED -
FILE NAME = 2238soq.dgn	DRAWN - SJS	REVISED -
PLOT SCALE = 20.0000 ' / IN.	CHECKED - NAK	REVISED -
PLOT DATE = 3/15/2019	DATE - 12/03/2018	REVISED -

**STATE OF ILLINOIS
DEPARTMENT OF TRANSPORTATION**

SUMMARY OF QUANTITIES

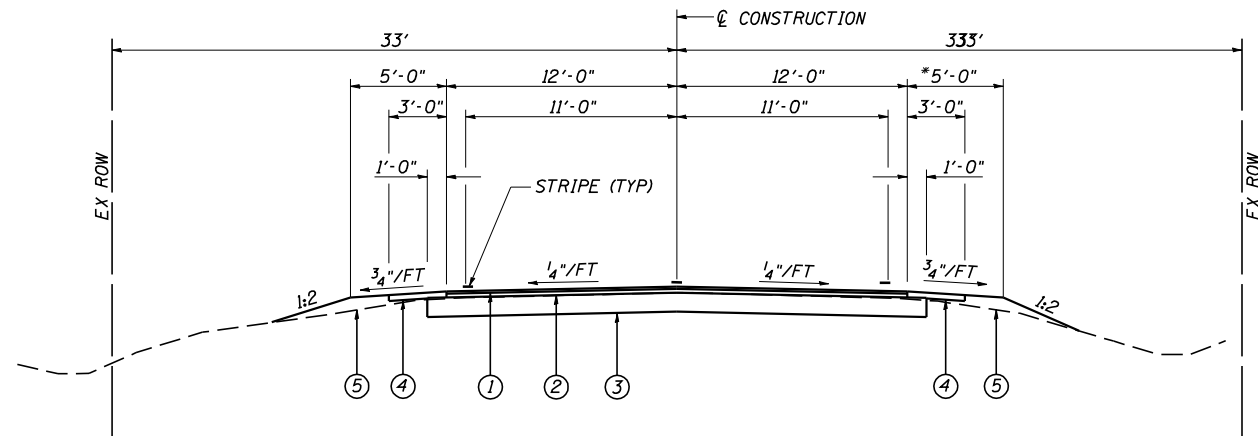
SCALE: SHEET NO. OF SHEETS STA. TO STA.

F.A.S. RTE. 452	SECTION 14-00130-13-RS	COUNTY FULTON	TOTAL SHEETS 18	SHEET NO. 4
FED. ROAD DIST. NO. [ILLINOIS] FED. AID PROJECT			CONTRACT NO. 89742	



PROPOSED CH 2 TYPICAL CROSS SECTION
STA 540+00.00 TO STA 542+42.28

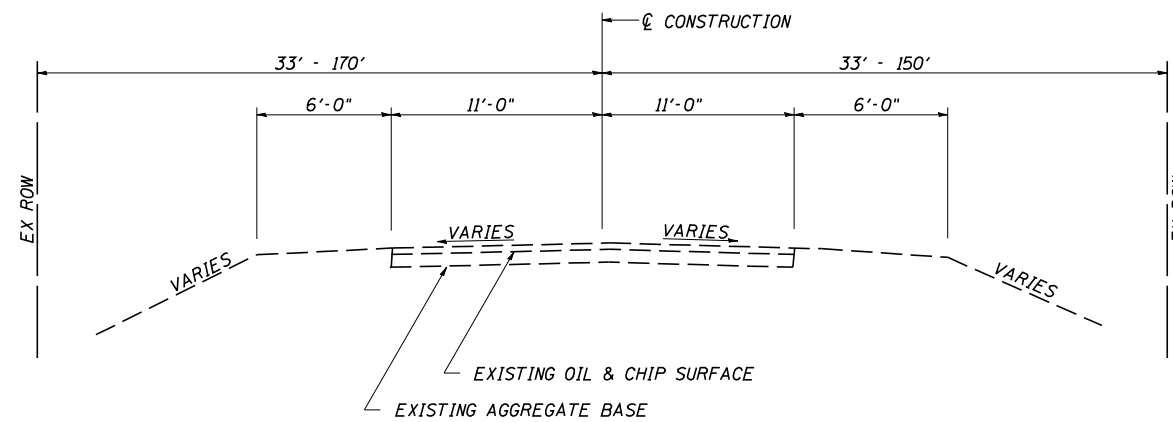
- LEGEND
- ① HMA SURFACE COURSE, MIX "C" N50, 1 1/2"
 - ② HMA BINDER COURSE, IL 19.0 N50, 2 1/2"
 - ③ PROCESSING MODIFIED SOIL 12"
 - ④ AGGREGATE SHOULDERS, TYPE B
 - ⑤ FURNISHED EXCAVATION
 - ⑥ GRANULAR EMBANKMENT, SPECIAL



PROPOSED CH 2 TYPICAL CROSS SECTION
STA 449+19.75 TO STA 490+78.07
STA 510+81.71 TO STA 540+00.00

OMISSION
STA 490+78.07 TO STA 510+81.71

* EARTH SHOULDER TRANSITION
RT STA. 462+45.00 - 5' SHOULDER TO RT STA. 462+85.00 - 7' SHOULDER
RT STA. 462+85.00 - 7' SHOULDER TO RT STA. 463+60.00 - 7' SHOULDER
RT STA. 463+60.00 - 7' SHOULDER TO RT STA. 464+00.00 - 5' SHOULDER



EXISTING CH 2 TYPICAL CROSS SECTION

EARTHWORK

LOCATION	20200100 EARTH EXCAVATION	EXCAVATION ADJUSTED FOR SHRINKAGE	EMBANKMENT	EARTHWORK BALANCE WASTE (+) OR SHORTAGE (-)
	CU YD	CU YD	CU YD	CU YD
LT STA 459+50.00 TO STA 466+08.00	95	75	40	35
LT STA 536+50.00 TO STA 542+42.28	50	40	35	5
RT STA 459+50.00 TO STA 466+50.00	190	145	245	-100
RT STA 536+50.00 TO STA 542+25.00	55	45	40	5
EARTH SHOULDER				
LT STA 446+19.75 TO STA 459+50.00			50	-50
LT STA 466+08.00 TO STA 490+78.07			95	-95
LT STA 510+81.71 TO STA 536+50.00			100	-100
RT STA 446+19.75 TO STA 459+50.00			50	-50
RT STA 466+08.00 TO STA 490+78.07			95	-95
RT STA 510+81.71 TO STA 536+50.00			100	-100
TOTAL	390	305	850	-545

SHRINKAGE = 25%

20600110 GRANULAR EMBANKMENT, SPECIAL

LOCATION	TON
STA 539+00.00 TO STA 542+42.28	266.5
TOTAL	267

20800150 TRENCH BACKFILL

LOCATION	CU YD
STA 462+74.00	23.11
TOTAL	23.11
USE	23

28000250 TEMPORARY EROSION CONTROL SEEDING

LOCATION	POUND
RT STA 459+50.00 TO STA 466+50.00	15
RT STA 537+00.00 TO STA 542+42.28	3
LT STA 459+50.00 TO STA 466+10.00	11
LT STA 536+50.00 TO STA 542+42.28	4
TOTAL	33

28000400 PERIMETER EROSION BARRIER

LOCATION	FOOT
RT STA 459+50.00 TO STA 466+50.00	721
RT STA 537+00.00 TO STA 542+42.28	432
LT STA 459+50.00 TO STA 466+10.00	662
LT STA 536+50.00 TO STA 542+42.28	595
TOTAL	2,410

ENTRANCE AND SIDEROAD SCHEDULE

LOCATION	TYPE	LENGTH	40200800 AGGREGATE SURFACE COURSE	35101400 AGGREGATE BASE COURSE, TYPE B	40600982 HMA SURFACE REMOVAL - BUTT JOINT	40600275 BITUMINOUS MATERIALS (PRIME COAT)	40600295 POLYMERIZED BITUMINOUS MATERIALS (TACK COAT)	40800050 INCIDENTAL HMA SURFACING	
			TON	TON	SQ YD	POUND	POUND	TON	
LT STA 450+30.00	SIDEROAD	HMA	49'						
LT STA 488+69.00	PE/MBTO	AGG	19'	4.0	11.3	74.2		7.4	
LT STA 480+29.00	PE/MBTO	AGG	19'	4.0	11.3	74.2		7.4	
LT STA 530+30.00	PE/MBTO	AGG	31'	13.6	21.1	138.9		13.8	
RT STA 541+19.00	CE	AGG	31'	23.9		142.3		28.3	
TOTAL				45.5	43.6	61.1	429.6	96.0	71.9
USE				46	44	* 62	* 430	* 96	72

* SEE OTHER SCHEDULES FOR ADDITIONAL QUANTITIES

40600275 BITUMINOUS MATERIALS (PRIME COAT)

LOCATION	WIDTH	LB/SQ FT	POUND
STA 449+19.75 TO STA 491+28.07	24.67'	0.25	25,954.81
STA 510+31.71 TO STA 542+42.28	24.67'	0.25	19,801.19
TOTAL			45,756.00
USE			* 45,756

40600982 HOT-MIX ASPHALT SURFACE REMOVAL - BUTT JOINT

LOCATION	WIDTH	SQ YD
STA 449+19.75 TO STA 449+49.75	24'	80.00
STA 449+49.75 TO STA 449+99.75	24'	133.33
STA 490+78.07 TO STA 491+28.07	24'	133.33
STA 491+28.07 TO STA 491+58.07	24'	80.00
STA 510+31.71 TO STA 510+81.71	24'	133.33
STA 510+01.71 TO STA 510+31.71	24'	80.00
STA 541+62.28 TO STA 542+12.28	24'	133.33
STA 542+12.28 TO STA 542+42.28	24'	80.00
TOTAL		853.32
USE		* 853

40600990 TEMPORARY RAMP

LOCATION	WIDTH	THICKNESS	SQ YD
STA 449+19.75 TO STA 449+24.75	24'	1.5"	13.33
STA 449+19.75 TO STA 449+28.75	24'	2.5"	24.00
STA 491+53.07 TO STA 491+58.07	24'	1.5"	13.33
STA 491+49.07 TO STA 491+58.07	24'	2.5"	24.00
STA 510+01.71 TO STA 510+06.71	24'	1.5"	13.33
STA 510+01.71 TO STA 510+10.71	24'	2.5"	24.00
STA 542+37.28 TO STA 542+42.28	24'	1.5"	13.33
STA 542+33.28 TO STA 542+42.28	24'	2.5"	24.00
TOTAL			149.32
USE			149

40600295 POLYMERIZED BITUMINOUS MATERIALS (TACK COAT)

LOCATION	WIDTH	LB/SQ FT	POUND
STA 449+19.75 TO STA 491+58.07	24.25'	0.08	8,222.34
STA 510+01.71 TO STA 542+42.28	24.25'	0.08	6,286.71
TOTAL			14,509.05
USE			* 14,509

40603080 HOT-MIX ASPHALT BINDER COURSE, IL-19.0, N50

LOCATION	AVG WIDTH	THICKNESS	TON
STA 449+49.75 TO STA 491+28.07	24.67'	2.5"	1,603.45
STA 510+31.71 TO STA 542+42.28	24.67'	2.5"	1,232.07
TOTAL			2,835.52
USE			2,836

40603310 HOT-MIX ASPHALT SURFACE COURSE, MIX "C", N50

LOCATION	AVG WIDTH	THICKNESS	TON
STA 449+19.75 TO STA 491+58.07	24.25'	1.5"	959.27
STA 510+01.71 TO STA 542+42.28	24.25'	1.5"	733.45
TOTAL			1,692.72
USE			1,693



JOB = 2585	DESIGNED - CGF	REVISED -
FILE NAME = 2238schedules.dgn	DRAWN - SJS	REVISED -
PLOT SCALE = 20.0000' / IN.	CHECKED - NAK	REVISED -
PLOT DATE = 3/15/2019	DATE - 12/03/2018	REVISED -

**STATE OF ILLINOIS
DEPARTMENT OF TRANSPORTATION**

SCHEDULE OF QUANTITIES

SCALE:	SHEET NO.	OF	SHEETS	STA.	TO STA.
--------	-----------	----	--------	------	---------

F.A.S. RTE.	SECTION	COUNTY	TOTAL SHEETS	SHEET NO.
452	14-00130-13-RS	FULTON	18	6
FED. ROAD DIST. NO.		ILLINOIS FED. AID PROJECT		
		CONTRACT NO. 89742		

48101200 AGGREGATE SHOULDERS, TYPE B

LOCATION	WIDTH	THICKNESS	TON
LT STA 449+19.75 TO STA 490+78.07	3'	4"	315.72
LT STA 510+81.71 TO STA 542+42.28	3'	4"	239.97
RT STA 449+19.75 TO STA 490+78.07	3'	4"	315.72
RT STA 510+81.71 TO STA 542+42.28	3'	4"	239.97
TOTAL			1,111.38
USE			1,111

50105220 PIPE CULVERT REMOVAL

LOCATION	FOOT
STA 462+74.00	82
TOTAL	82

542A0253 PIPE CULVERTS, CLASS A, TYPE 1 48"

LOCATION	FOOT
24.8' LT STA 462+44.38 18.9' RT STA 463+13.33	68
21.7' RT STA 463+15.96 44.2' RT STA 463+23.62	35
TOTAL	103

54213693 PRECAST REINFORCED CONCRETE FLARED END SECTIONS 48"

LOCATION	EACH
24.8' LT STA 462+44.38	1
44.2' RT STA 463+23.62	1
TOTAL	2

60223800 MANHOLES, TYPE A, 6'-DIAMETER, TYPE 1 FRAME, CLOSED LID

LOCATION	EACH
34' RT STA 463+14.54	1
TOTAL	1

SHORT-TERM PAVEMENT MARKING

LOCATION	NO. OF APPLICATIONS	70300100 SHORT-TERM PAVEMENT MARKING	70300150 SHORT-TERM PAVEMENT MARKING REMOVAL
		FOOT	SQ FT
YELLOW SKIP DASH			
CL STA 449+19.75 STA 487+74.00	3	1,164	129
CL STA 512+92.00 STA 541+55.00	3	864	96
TOTAL		2,028	225

78001110 PAINT PAVEMENT MARKING - LINE 4"

LOCATION	YELLOW FOOT	WHITE FOOT	TOTAL FOOT
	SOLID YELLOW NO PASSING ZONE		
SB STA 482+25.00 STA 512+81.00	3,056		3,056
NB STA 487+97.00 STA 488+79.00	82		82
NB STA 512+81.00 STA 517+87.00	506		506
SB STA 537+57.00 STA 542+38.00	481		481
NB STA 541+57.00 STA 542+38.00	81		81
YELLOW SKIP DASH			
CL STA 449+19.75 STA 487+74.00	970		970
CL STA 512+92.00 STA 541+55.00	720		720
SOLID WHITE EDGE LINE			
NB STA 449+19.75 STA 491+58.07		4,239	4,239
SB STA 449+19.75 STA 491+58.07		4,239	4,239
NB STA 510+01.71 STA 542+42.28		3,241	3,241
SB STA 510+01.71 STA 542+42.28		3,241	3,241
TOTAL	5,896	14,960	20,856

LR403300 SURFACE PROFILE MILLING

LOCATION	WIDTH	SQ YD
STA 449+19.75 TO STA 490+78.07	24'	11,088.85
STA 510+81.71 TO STA 542+42.28	24'	8,428.19
TOTAL		19,517.04
USE		19,517

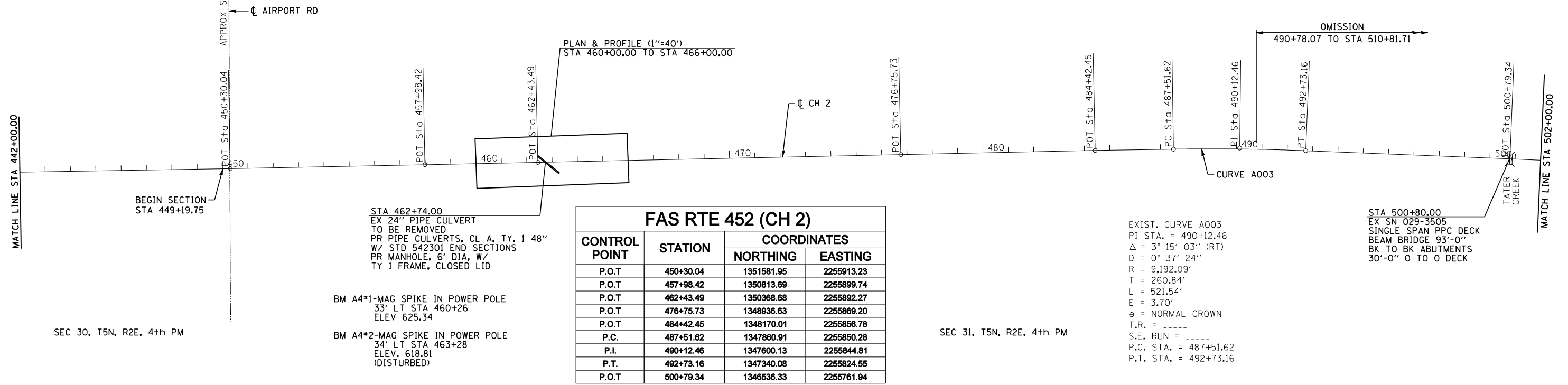
X2501000 SEEDING, CLASS 2 (SPECIAL)

LOCATION	ACRE
RT STA 459+50.00 TO STA 466+50.00	0.19
RT STA 537+00.00 TO STA 542+42.28	0.03
LT STA 459+50.00 TO STA 466+10.00	0.11
LT STA 536+50.00 TO STA 542+42.28	0.05
TOTAL	0.38
USE	0.50



SEC 29, T5N, R2E, 4th PM

SEC 32, T5N, R2E, 4th PM



STA 462+74.00
EX 24" PIPE CULVERT
TO BE REMOVED
PR PIPE CULVERTS, CL A, TY, 1 48"
W/ STD 542301 END SECTIONS
PR MANHOLE, 6' DIA, W/
TY 1 FRAME, CLOSED LID

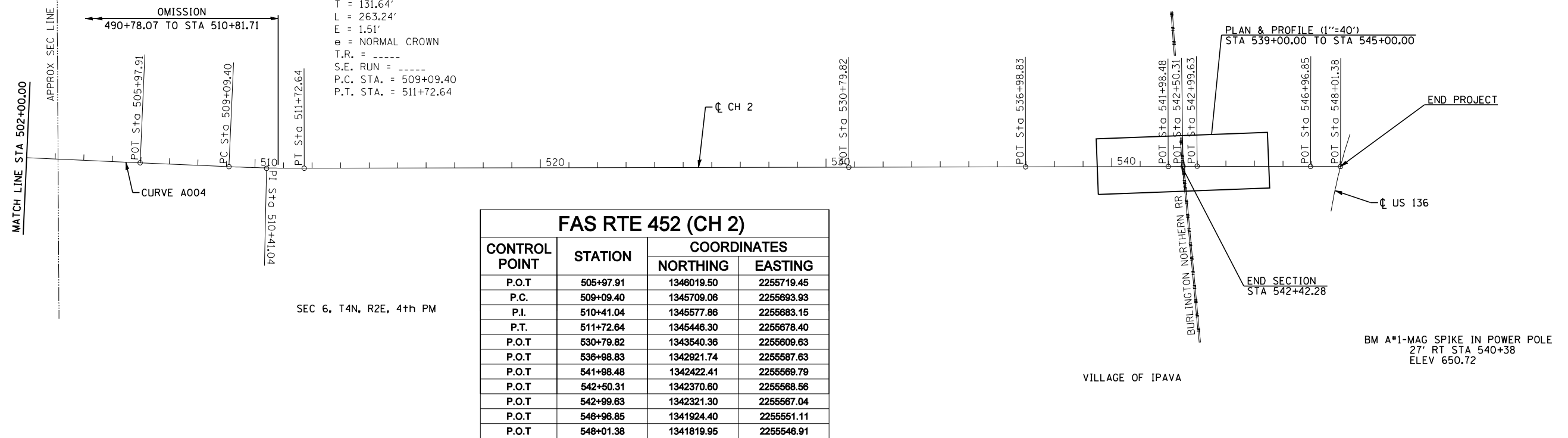
BM A4*1-MAG SPIKE IN POWER POLE
33' LT STA 460+26
ELEV 625.34

BM A4*2-MAG SPIKE IN POWER POLE
34' LT STA 463+28
ELEV. 618.81
(DISTURBED)

FAS RTE 452 (CH 2)			
CONTROL POINT	STATION	COORDINATES	
		NORTHING	EASTING
P.O.T.	450+30.04	1351581.95	2255913.23
P.O.T.	457+98.42	1350813.69	2255899.74
P.O.T.	462+43.49	1350368.68	2255892.27
P.O.T.	476+75.73	1348936.63	2255869.20
P.O.T.	484+42.45	1348170.01	2255856.78
P.C.	487+51.62	1347860.91	2255850.28
P.I.	490+12.46	1347600.13	2255844.81
P.T.	492+73.16	1347340.08	2255824.55
P.O.T.	500+79.34	1346536.33	2255761.94



SEC 5, T4N, R2E, 4th PM



FAS RTE 452 (CH 2)			
CONTROL POINT	STATION	COORDINATES	
		NORTHING	EASTING
P.O.T.	505+97.91	1346019.50	2255719.45
P.C.	509+09.40	1345709.06	2255693.93
P.I.	510+41.04	1345577.86	2255683.15
P.T.	511+72.64	1345446.30	2255678.40
P.O.T.	530+79.82	1343540.36	2255609.63
P.O.T.	536+98.83	1342921.74	2255587.63
P.O.T.	541+98.48	1342422.41	2255569.79
P.O.T.	542+50.31	1342370.60	2255568.56
P.O.T.	542+99.63	1342321.30	2255567.04
P.O.T.	546+96.85	1341924.40	2255551.11
P.O.T.	548+01.38	1341819.95	2255546.91



JOB = 2585
FILE NAME = 2238-sht-01.dgn
PLOT SCALE = 400.0000 sf / IN.
PLOT DATE = 3/15/2019

DESIGNED - NAK
DRAWN - TJD
CHECKED - NAK
DATE - 5/26/2011

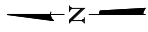
REVISED -
REVISED -
REVISED -
REVISED -

STATE OF ILLINOIS
DEPARTMENT OF TRANSPORTATION

ALIGNMENT

SCALE: SHEET NO. OF SHEETS STA. 442+00 TO STA. 548+01.38

F.A.S. RTE.	SECTION	COUNTY	TOTAL SHEETS	SHEET NO.
452	14-00130-13-RS	FULTON	18	8
CONTRACT NO. 89742				
FED. ROAD DIST. NO. ILLINOIS FED. AID PROJECT				

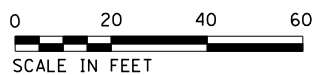
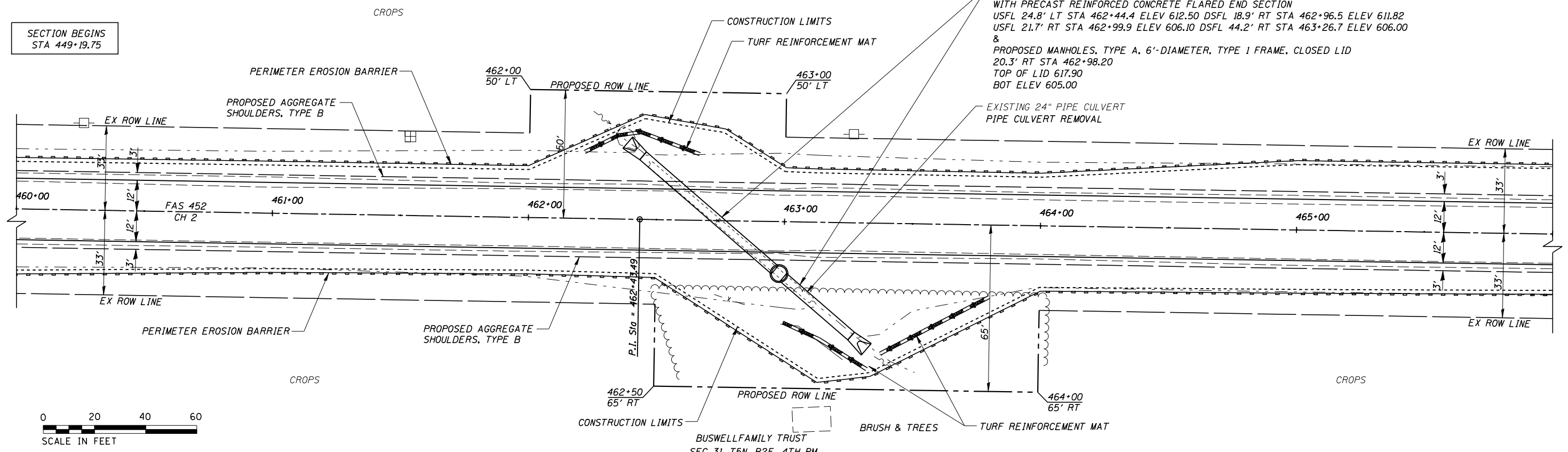


SECTION BEGINS
STA 449+19.75

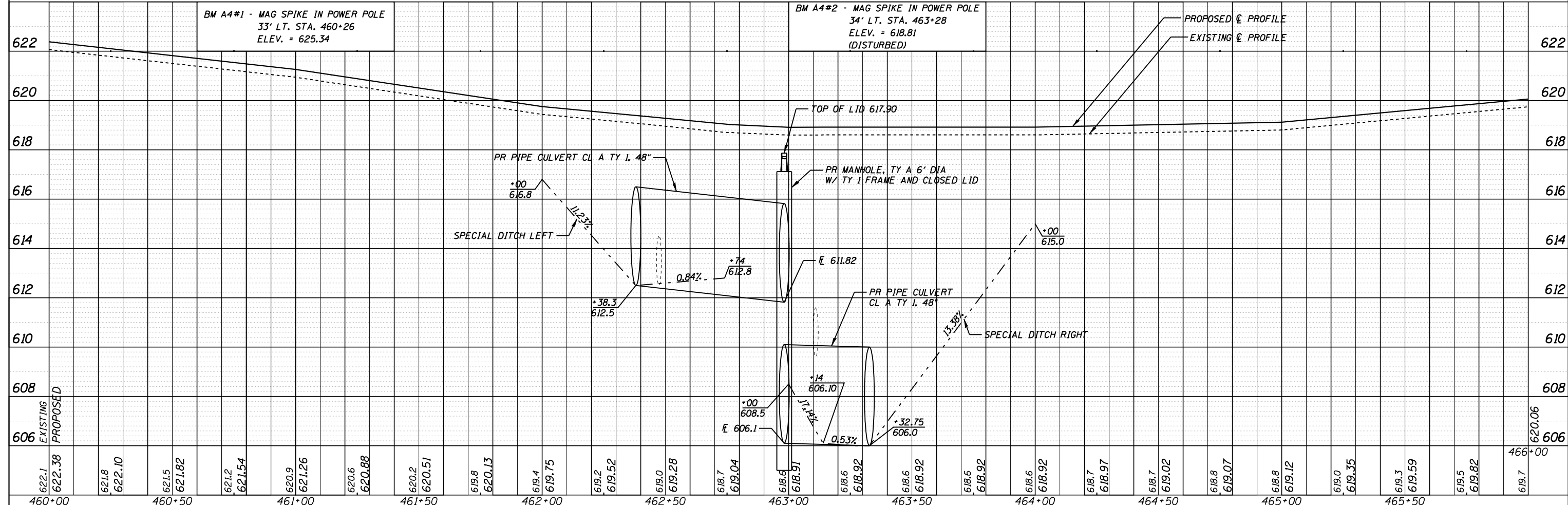
SEC 32, T5N, R2E, 4TH PM
ALVENA & VIRGIL GATHMANN

STA 462+74.00
PROPOSED PIPE CULVERTS, CLASS A, TYPE 1 48"x68" & 48"x35"
WITH PRECAST REINFORCED CONCRETE FLARED END SECTION
USFL 24.8' LT STA 462+44.4 ELEV 612.50 DSFL 18.9' RT STA 462+96.5 ELEV 611.82
USFL 21.7' RT STA 462+99.9 ELEV 606.10 DSFL 44.2' RT STA 463+26.7 ELEV 606.00
&
PROPOSED MANHOLES, TYPE A, 6'-DIAMETER, TYPE 1 FRAME, CLOSED LID
20.3' RT STA 462+98.20
TOP OF LID 617.90
BOT ELEV 605.00

PLAN	SURVEYED	DATE
	PLOTTED	BY
	GRADES CHECKED	
	STRUCTURE NOTATIONS CHECKED	
	NO. _____	



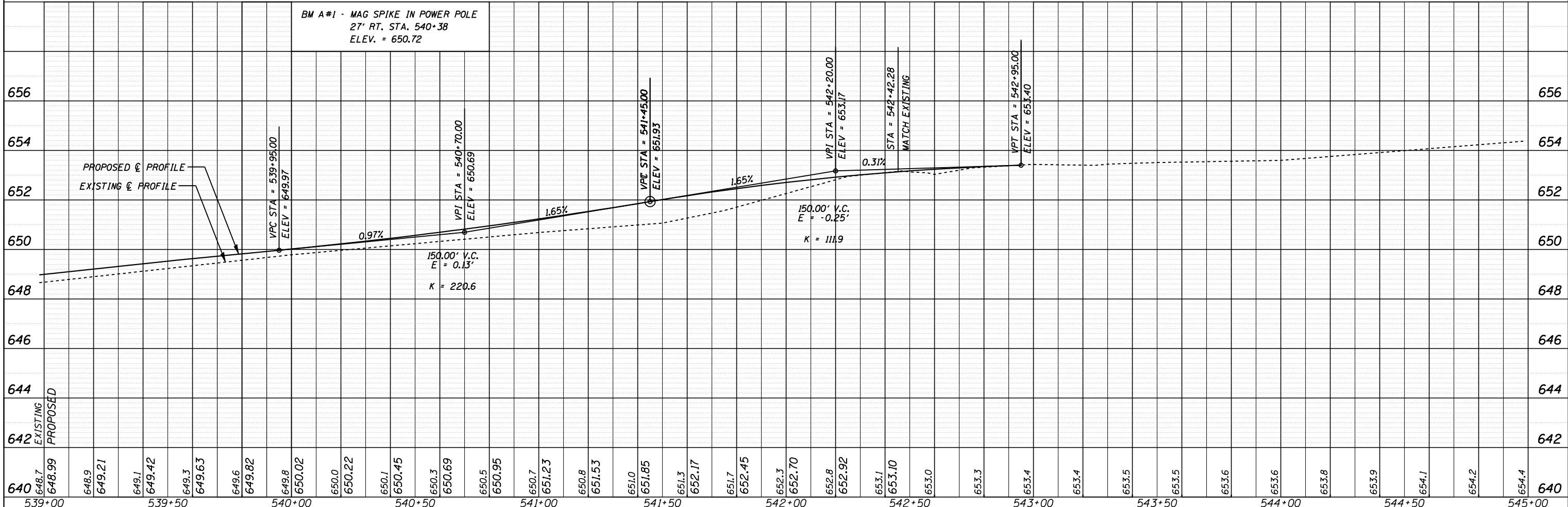
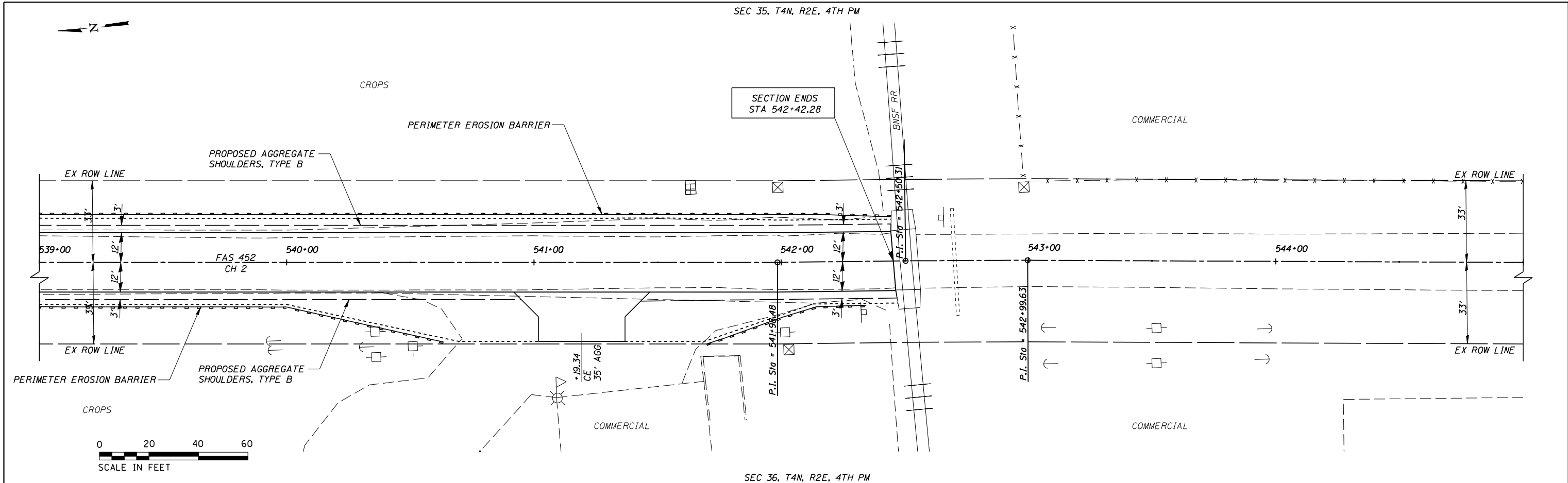
PROFILE	SURVEYED	DATE
	PLOTTED	BY
	GRADES CHECKED	
	STRUCTURE NOTATIONS CHECKED	
	NO. _____	



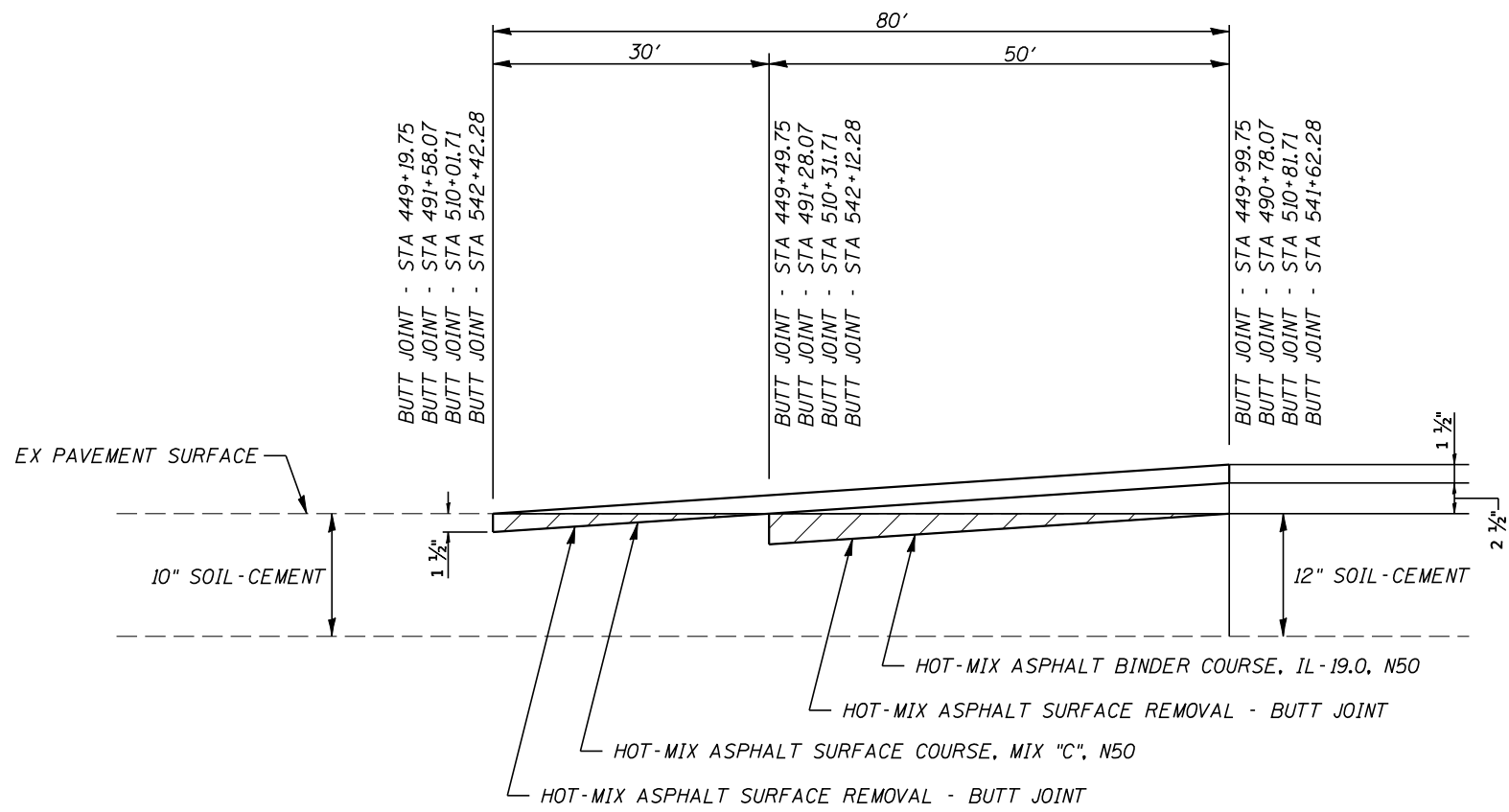
CEC Cummins Engineering Corporation Civil and Structural Engineering	JOB = 2585 FILE NAME = 2238p&p.dgn PLOT SCALE = 48,000 sf / IN. PLOT DATE = 3/15/2019	DESIGNED - NAK DRAWN - AJH CHECKED - DATE - 6/13/2011	REVISED - REVISED - REVISED - REVISED -	STATE OF ILLINOIS DEPARTMENT OF TRANSPORTATION	PLAN & PROFILE SCALE: SHEET NO. OF SHEETS STA. 460+00 TO STA. 466+00	F.A.S. RTE. 452 SECTION 14-00130-13-RS COUNTY FULTON TOTAL SHEETS 18 SHEET NO. 9 CONTRACT NO. 89742 FED. ROAD DIST. NO. ILLINOIS FED. AID PROJECT
--	--	--	--	---	--	---

PLAN	SURVEYED	BY	DATE
NOTE BOOK NO.	PLOTTED		
	CHECKED		
	AT		
	ALIGNMENT		
	FILE NAME		

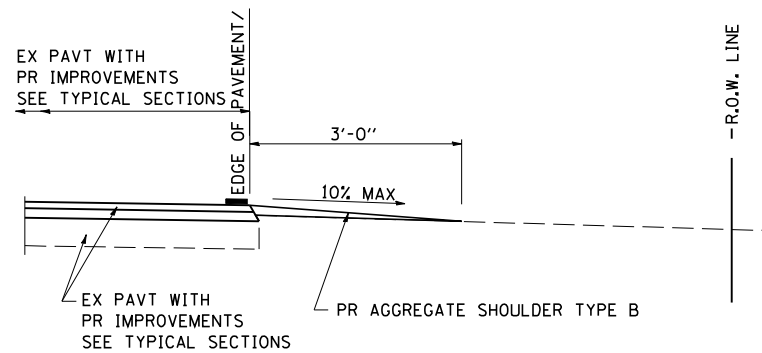
PROFILE	SURVEYED	BY	DATE
NOTE BOOK NO.	PLOTTED		
	CHECKED		
	AT		
	STRUCTURE		
	NOTATION CHKD		



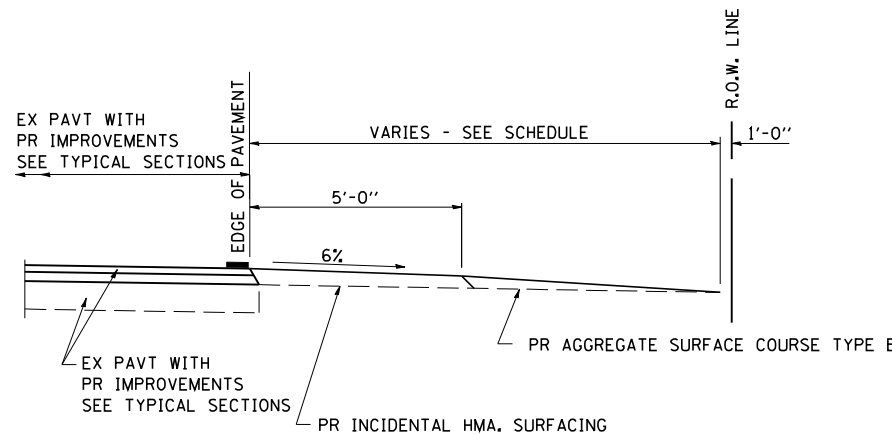
CEC Cummins Engineering Corporation Civil and Structural Engineering	JOB = 2585	DESIGNED - NAK	REVISED -	STATE OF ILLINOIS DEPARTMENT OF TRANSPORTATION	PLAN & PROFILE	F.A.S. RTE. 452	SECTION 14-00130-13-RS	COUNTY FULTON	TOTAL SHEETS 18	SHEET NO. 10
	FILE NAME = 2238p&p.dgn	DRAWN - AJH	REVISED -			LOCATION 4	CONTRACT NO. 89742			
	PLOT SCALE = 48,000 sf / IN.	CHECKED -	REVISED -	SCALE:	SHEET NO. OF SHEETS	STA. 539+00 TO STA. 545+00	FED. ROAD DIST. NO. ILLINOIS FED. AID PROJECT			
	PLOT DATE = 3/15/2019	DATE - 6/9/2011	REVISED -							



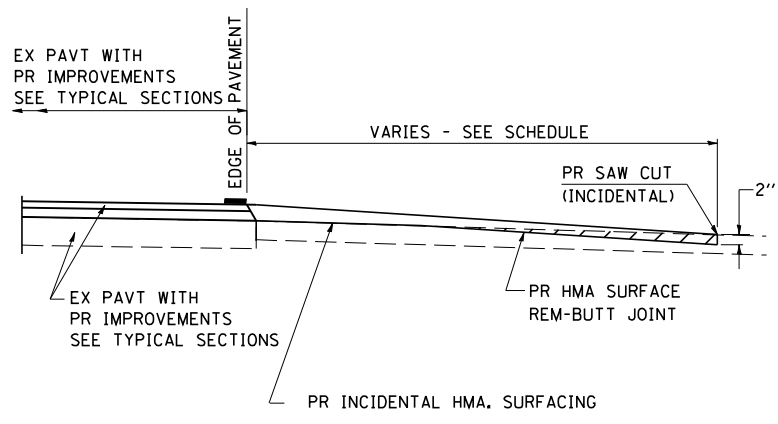
BUTT JOINT DETAIL



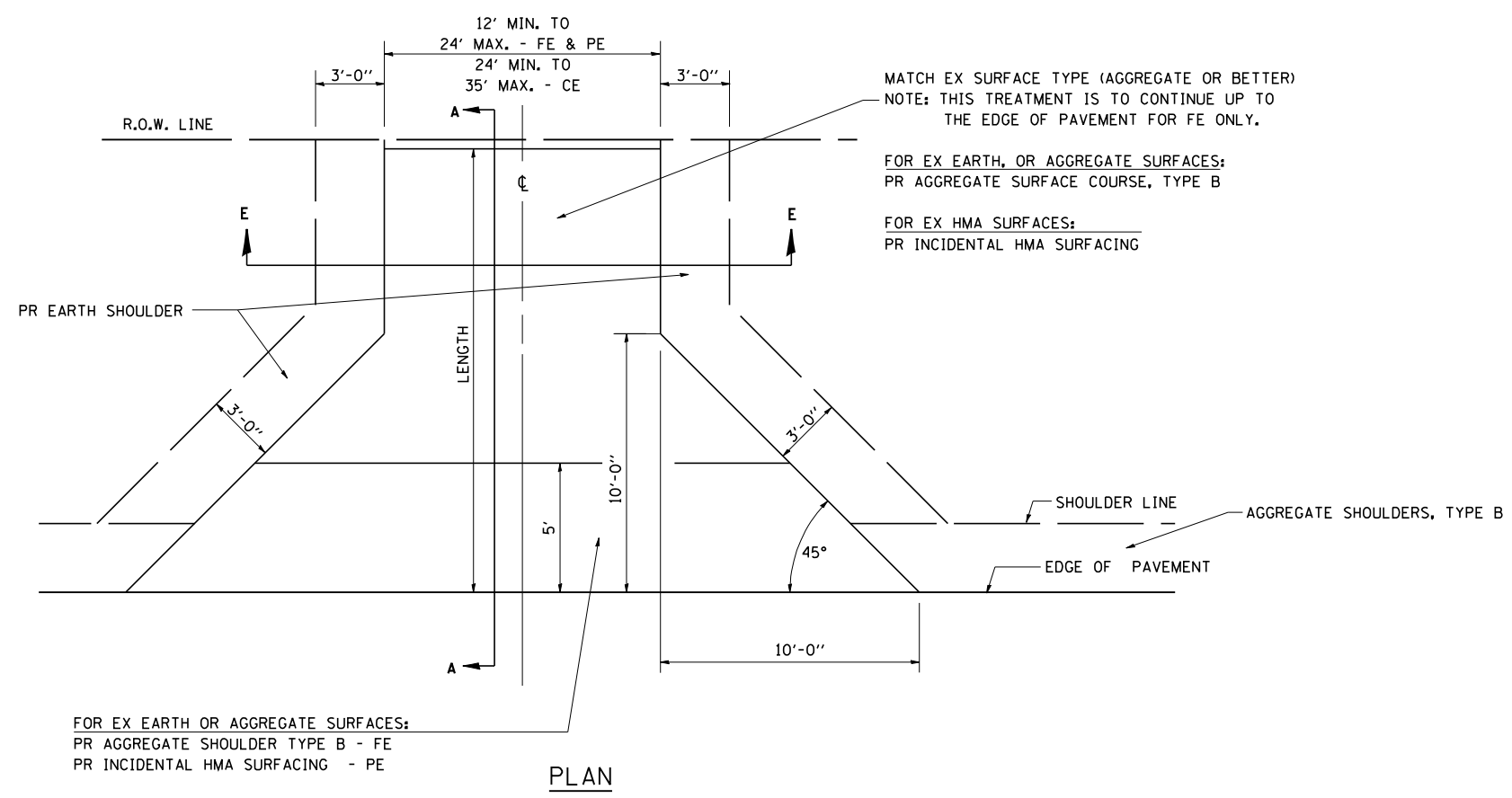
SECTION A-A FOR EX EARTH/AGGREGATE FE



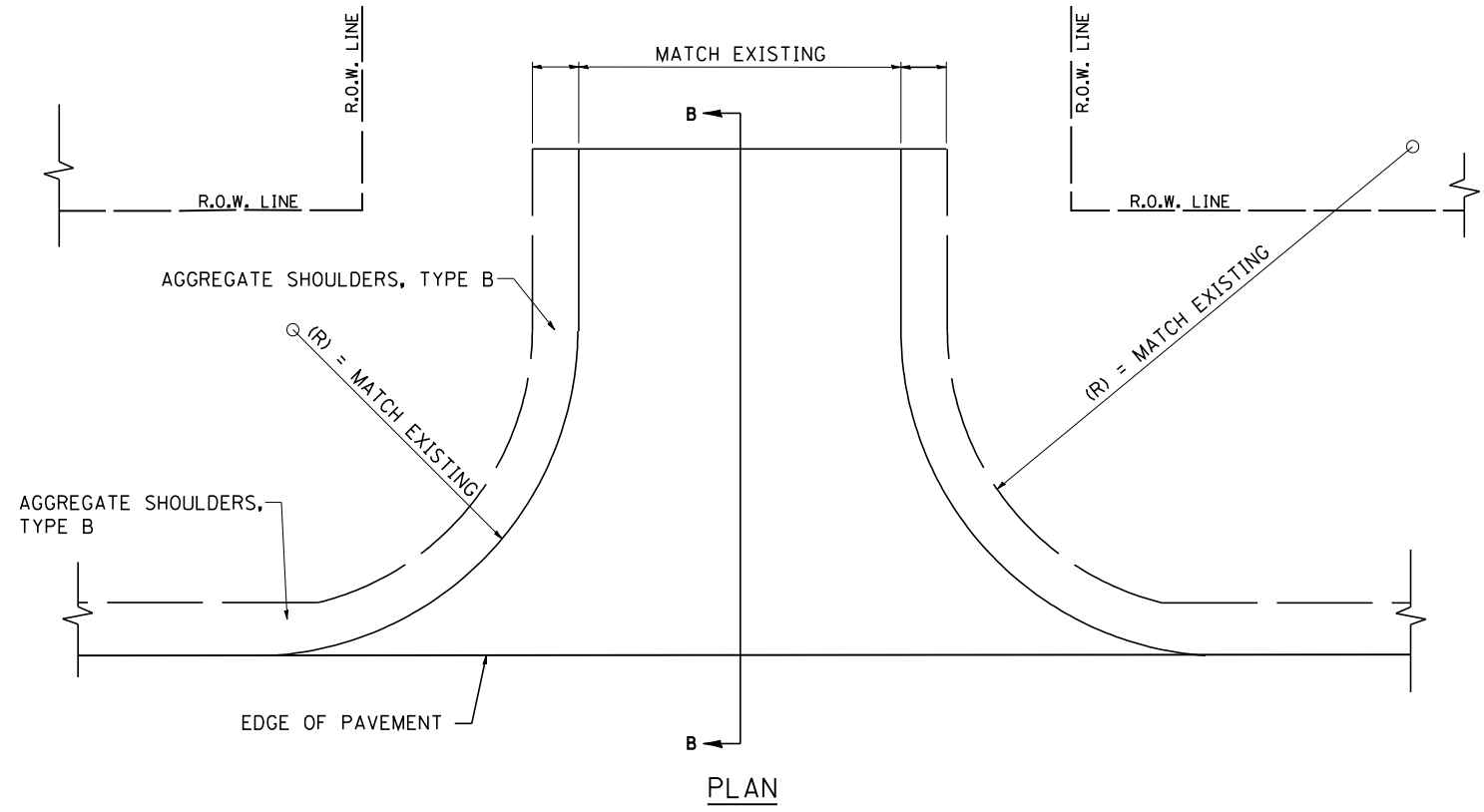
SECTION A-A FOR EX AGGREGATE PE & CE



SECTION B-B FOR EX OIL & CHIP AND HMA SIDEROAD



PLAN



PLAN

GENERAL NOTES:

THE RESIDENT ENGINEER WILL DETERMINE THE EXACT TYPE OF IMPROVEMENT TO BE COMPLETED FOR ALL ENTRANCES, SIDEROADS AND MAILBOX TURNOUTS ON THIS PROJECT.

THE PLAN DETAILS AND SCHEDULES SHOULD BE USED AS A GUIDE FOR THE ENGINEER TO IMPLEMENT THE FINAL DESIGN. THE ENGINEER MAY DECIDE TO SALVAGE PORTIONS OF THE EXISTING ENTRANCE PAVEMENT STRUCTURE; THEREFORE, REDUCING PAY ITEM QUANTITIES. NO ADDITIONAL PAYMENT WILL BE ALLOWED FOR THIS REDUCTION IN QUANTITIES.

ANY WORK THE ENGINEER REQUIRES WHICH IS NOT COVERED BY A PAY ITEM CONTAINED IN THE PLANS WILL BE PAID FOR IN ACCORDANCE WITH ARTICLE 109.04 OF THE STANDARD SPECIFICATIONS.

WHEN THE HOT-MIX ASPHALT PROPOSED FOR THE IMPROVEMENT IS THICKER THAN 3 INCHES AND REQUIRE PLACEMENT IN MORE THAN ONE LIFT. THE BOTTOM LIFT(S) SHALL MEET THE REQUIREMENTS OF HMA BASE COURSE IN SECTION 406 OF THE STANDARD SPECIFICATIONS AND THE TOP LIFT OF 2 INCHES SHALL MEET THE REQUIREMENTS OF BITUMINOUS CONCRETE SURFACE COURSE, SUPERPAVE.

THIS WORK WILL BE PAID FOR IN ACCORDANCE WITH SECTIONS 351, 358, 408, 423 AND 440 OF THE STANDARD SPECIFICATIONS.



JOB = 2585
 FILE NAME = 2238-sht-ent.dgn
 PLOT SCALE = 20,0000' / IN.
 PLOT DATE = 3/15/2019

DESIGNED - CGF
 DRAWN - SJS
 CHECKED - NAK
 DATE - 12/28/18

REVISED -
 REVISED -
 REVISED -
 REVISED -

ILLINOIS DEPARTMENT OF TRANSPORTATION

ENTRANCE & SIDEROAD DETAILS

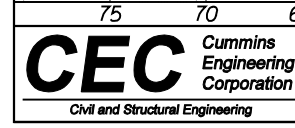
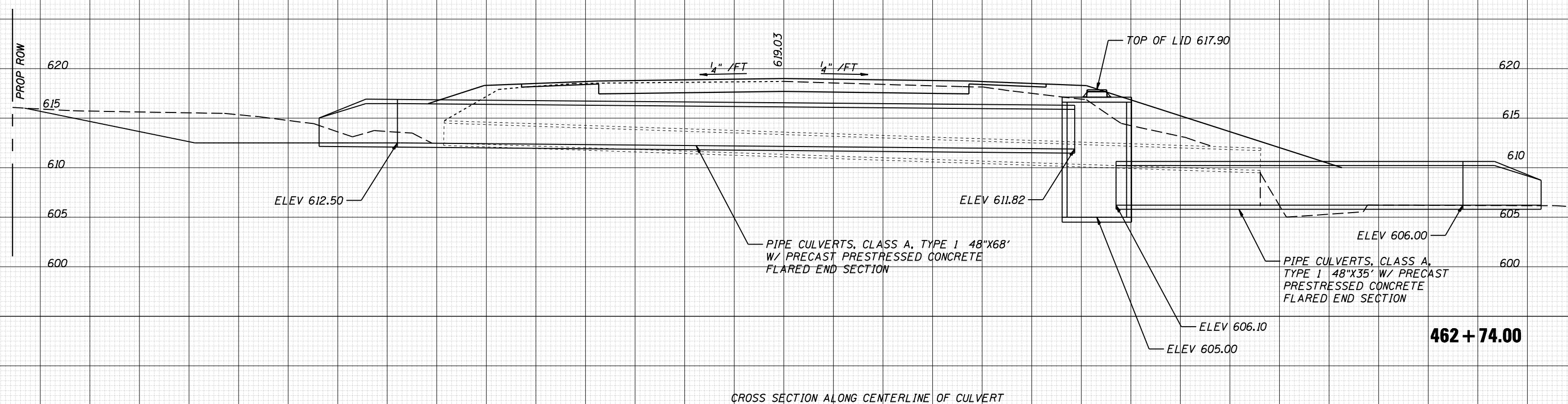
SCALE: SHEET NO. OF SHEETS STA. TO STA.

F.A.S. RTE.	SECTION	COUNTY	TOTAL SHEETS	SHEET NO.
452	14-00130-13-RS	FULTON	18	12
FED. ROAD DIST. NO. ILLINOIS FED. AID PROJECT			CONTRACT NO. 89742	

75 70 65 60 55 50 45 40 35 30 25 20 15 10 5 0 5 10 15 20 25 30 35 40 45 50 55 60 65 70 75

DATE	
BY	
SURVEYED	
PLOTTED	
TEMPLATE	
AREAS	
CHECKED	
FINAL SURVEY	
NOTE BOOK	
NO.	

DATE	
BY	
SURVEYED	
PLOTTED	
TEMPLATE	
AREAS	
CHECKED	
ORIGINAL SURVEY	
NOTE BOOK	
NO.	



JOB 2585
 FILE NAME = 2238culvsec.dgn
 PLOT SCALE = 10.0000' / IN.
 PLOT DATE = 3/15/2019

DESIGNED - CGF
 DRAWN - CGF
 CHECKED - NAK
 DATE - 12/06/18

REVISED -
 REVISED -
 REVISED -
 REVISED -

ILLINOIS DEPARTMENT OF TRANSPORTATION

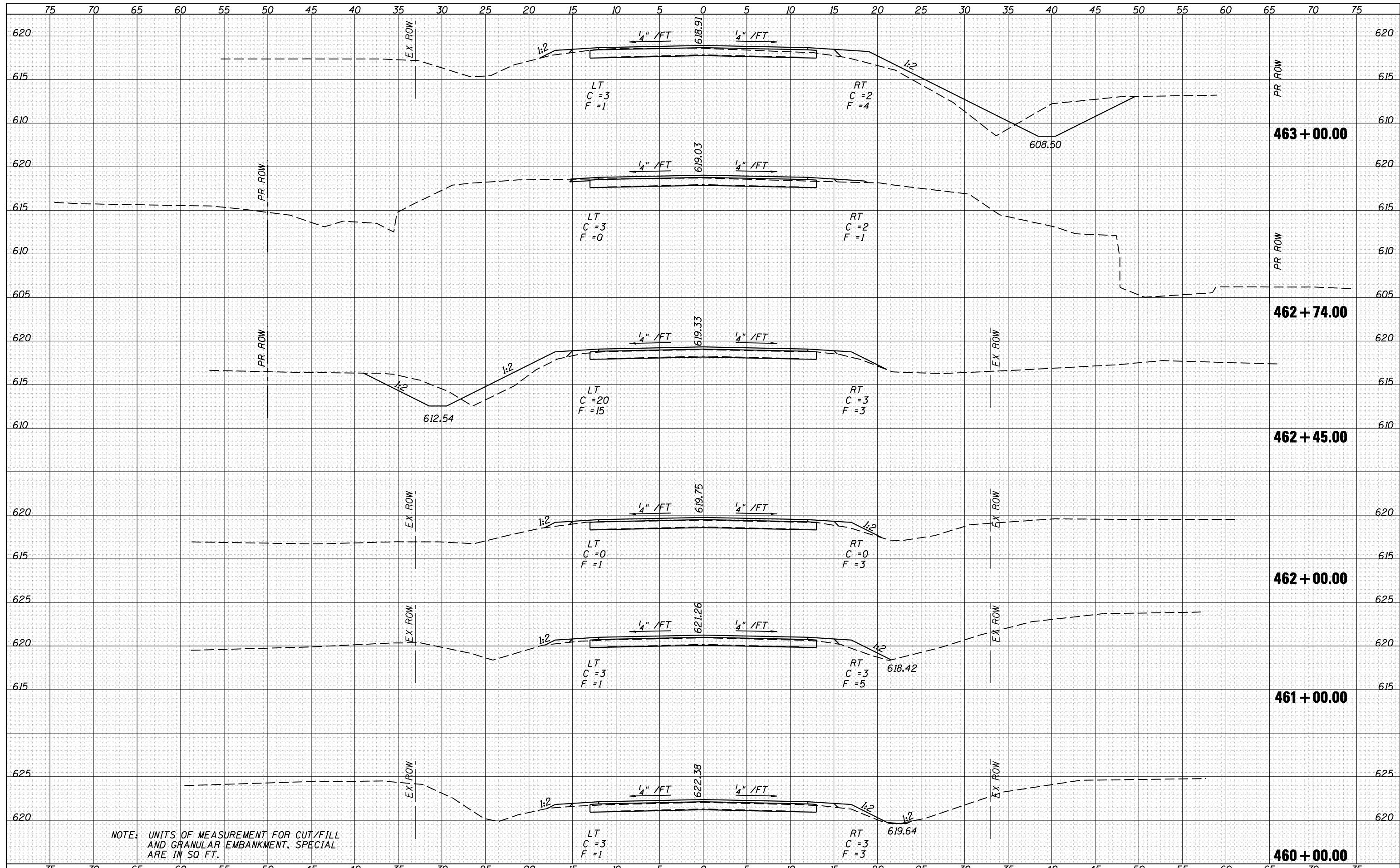
CROSS SECTIONS

SHEET 1 OF 5 SHEETS STA. TO STA.

F.A.S. RTE.	SECTION	COUNTY	TOTAL SHEETS	SHEET NO.
452	14-00130-13-RS	FULTON	18	14
FED. ROAD DIST. NO.			ILLINOIS FED. AID PROJECT	
			CONTRACT NO. 89742	

DATE	
BY	
SURVEYED	
PLOTTED	
TEMPLATE	
AREAS	
CHECKED	
FINAL SURVEY	
NOTE BOOK	
NO.	

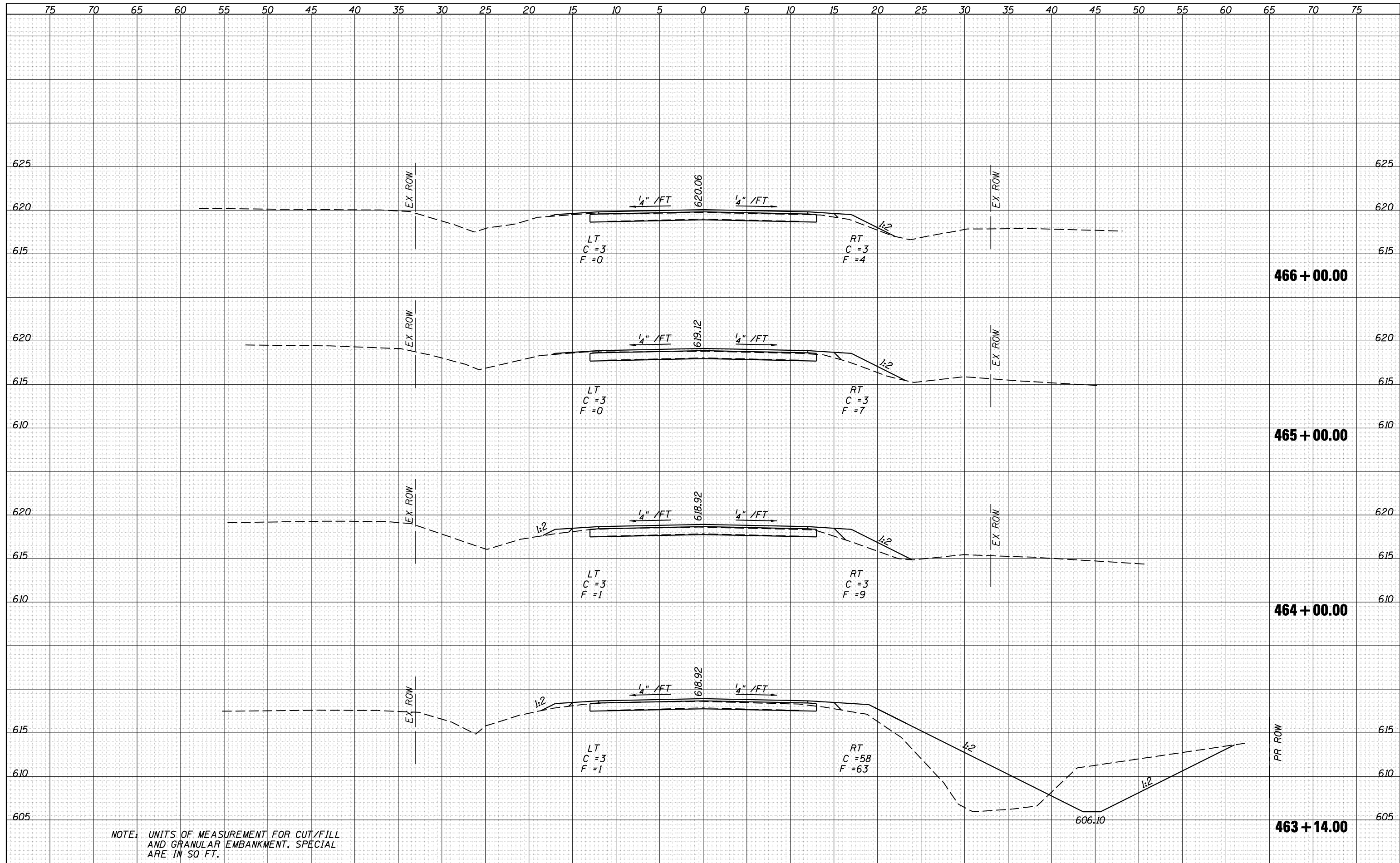
DATE	
BY	
SURVEYED	
PLOTTED	
TEMPLATE	
AREAS	
CHECKED	
ORIGINAL SURVEY	
NOTE BOOK	
NO.	



NOTE: UNITS OF MEASUREMENT FOR CUT/FILL AND GRANULAR EMBANKMENT. SPECIAL ARE IN SQ. FT.

DATE	
BY	
SURVEYED	
PLOTTED	
TEMPLATE	
AREAS	
CHECKED	
FINAL SURVEY	
NOTE BOOK	
NO.	

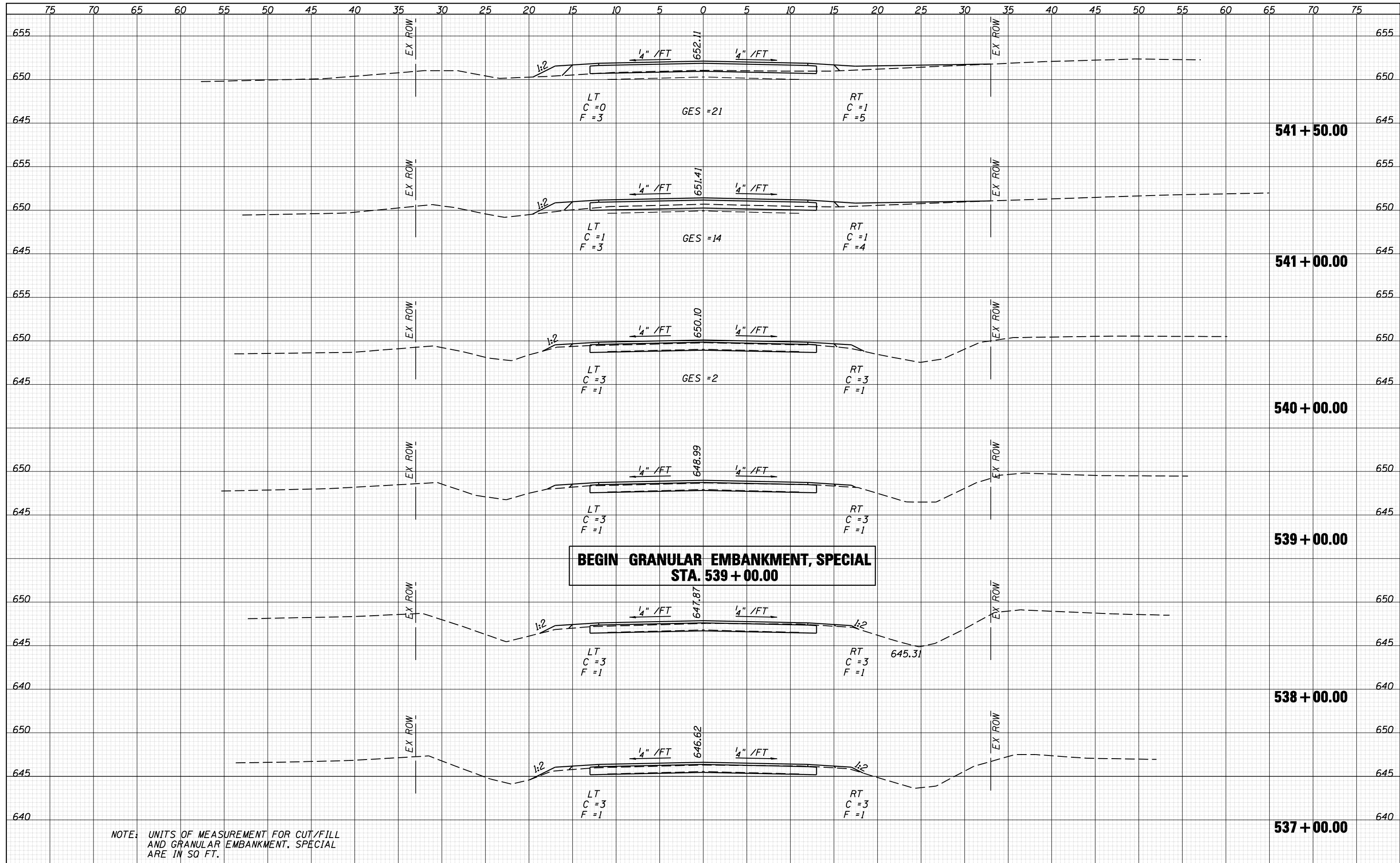
DATE	
BY	
SURVEYED	
PLOTTED	
TEMPLATE	
AREAS	
CHECKED	
ORIGINAL SURVEY	
NOTE BOOK	
NO.	



NOTE: UNITS OF MEASUREMENT FOR CUT/FILL AND GRANULAR EMBANKMENT. SPECIAL ARE IN SQ FT.

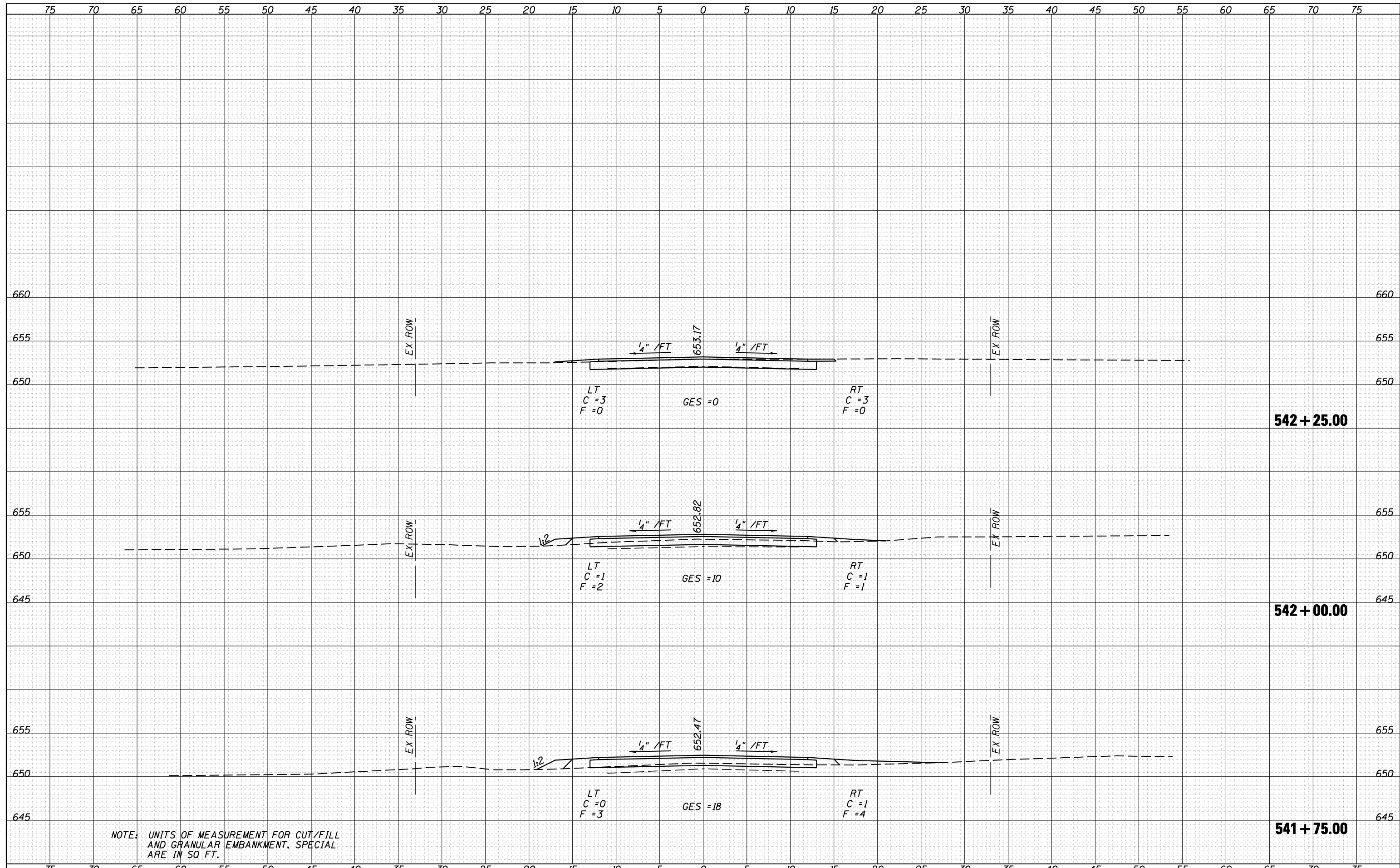
DATE	
BY	
SURVEYED	
PLOTTED	
TEMPLATE	
AREAS	
CHECKED	
NO.	

DATE	
BY	
SURVEYED	
PLOTTED	
TEMPLATE	
AREAS	
CHECKED	
NO.	



DATE	
BY	
SURVEYED	
PLOTTED	
TEMPLATE	
AREAS	
CHECKED	
FINAL SURVEY NO.	
NOTE BOOK NO.	

DATE	
BY	
SURVEYED	
PLOTTED	
TEMPLATE	
AREAS	
CHECKED	
ORIGINAL SURVEY NO.	
NOTE BOOK NO.	



NOTE: UNITS OF MEASUREMENT FOR CUT/FILL AND GRANULAR EMBANKMENT. SPECIAL ARE IN SQ FT.