

06-14-2019 LETTING ITEM 243

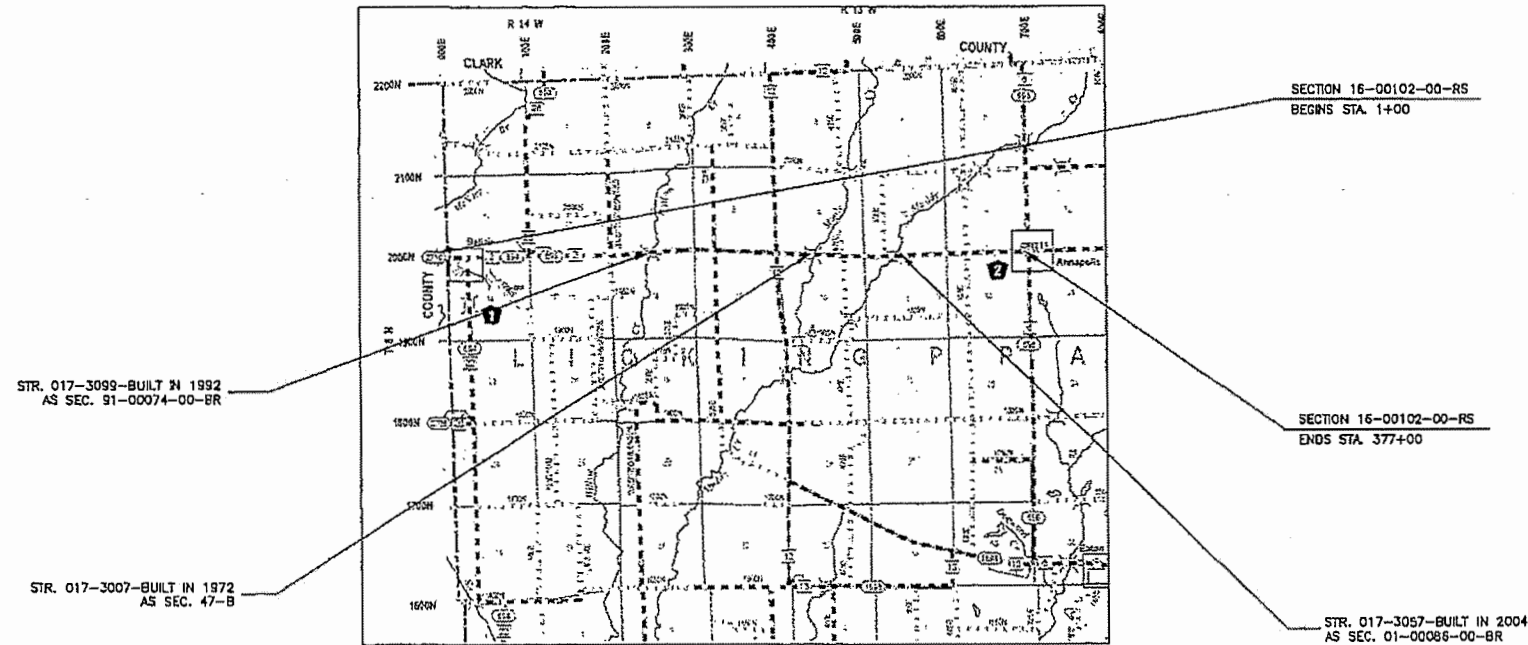
STATE OF ILLINOIS
 DEPARTMENT OF TRANSPORTATION
 DIVISION OF HIGHWAYS
 PLANS FOR PROPOSED
 SURFACE TRANSPORTATION PROGRAM
 CRAWFORD COUNTY
 SECTION 16-00102-00-RS
 FAS 2710, 694 & 695
 PROJECT 4Y9I (600)
 JOB NO. C-97-049-19

INDEX OF SHEETS

- 1 COVER SHEET
- 2 TYPICAL SECTIONS (ROADWAY)
- 2 SUMMARY OF QUANTITIES
- 3 TYPICAL SECTIONS (BRIDGES)
- 4 PLAN-PROFILE STA 1+00 TO STA. 15+67
- 5-8 CROSS SECTIONS STA 1+00 TO STA. 15+67

STANDARDS:

- 280001-07
- 630301-09
- 701006-05
- 701306-04
- 701301-04
- 701311-03
- 701901-08
- 720001-01
- 720006-04
- 729001-01
- 780001-05
- BLR 20-7
- BLR 21-9

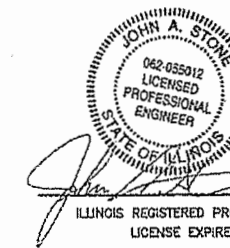


LOCATION MAP

APPROXIMATE SCALE: 1 INCH = 1 MILE
NET LENGTH = 37,600 FEET = 7.12 MILES

FUNCTIONAL CLASS - RURAL MAJOR COLLECTOR
ADT = 650
DESIGN SPEED = 50 MPH

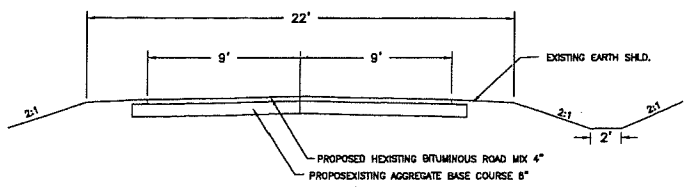
TOLL FREE JOINT UTILITY LOCATING
INFORMATION FOR EXCAVATORS (J.U.L.I.E.)
TELEPHONE NO. 1-800-892-0123



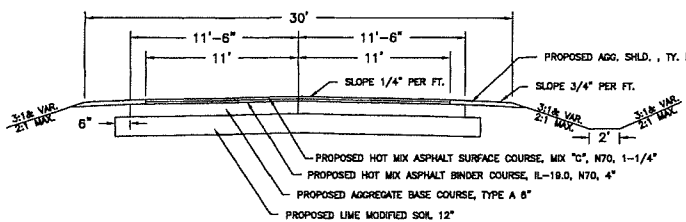
John A. Stone 03/18/2019
 ILLINOIS REGISTERED PROFESSIONAL ENGINEER # 55012
 LICENSE EXPIRES NOVEMBER 30, 2019
 CONNOR & CONNOR, INC.
 PROFESSIONAL DESIGN FIRM #184-000832

ILLINOIS DEPARTMENT OF TRANSPORTATION	
APPROVED: <i>March 13, 2019</i>	<i>John A. Stone</i> CRAWFORD COUNTY ENGINEER
PASSED: <i>APRIL 10, 2019</i>	<i>John A. Stone</i> DISTRICT SEVEN ENGINEER OF LOCAL ROADS & STREETS
RELEASING FOR BID BASED ON LIMITED REVIEW	<i>APRIL 10, 2019</i> <i>Jeffrey M. Souther</i> REGION FOUR ENGINEER

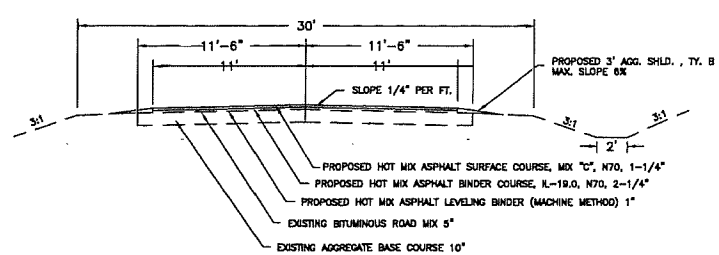
SECTION	16-00102-00-RS	TOTAL SHEETS	SHEET NO.
COUNTY	CRAWFORD	8	2
CONTRACT NO. 95853			



TYPICAL SECTION OF EXISTING ROAD
STA. 1+00 TO STA. 15+87.21

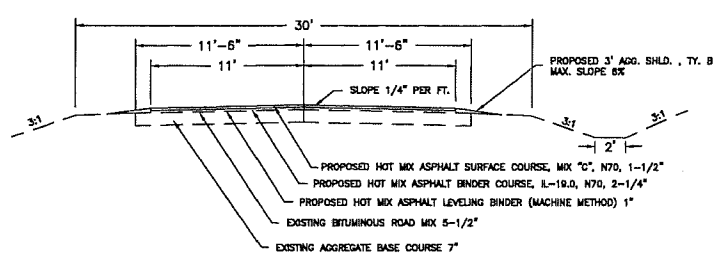


TYPICAL SECTION OF PROPOSED ROAD
STA. 1+00 TO STA. 15+87.21

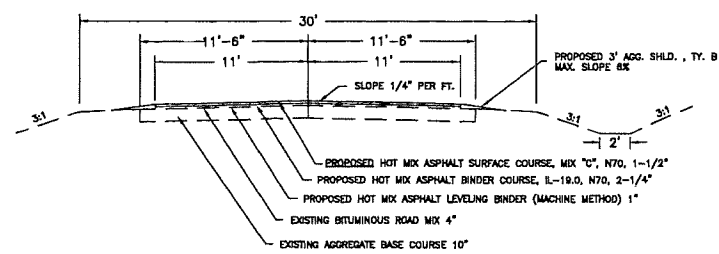


TYPICAL SECTION OF EXISTING AND PROPOSED ROAD
STA. 15+87.21 TO STA. 53+00

NOTE: TRANSITION HMA SURFACE COURSE FROM 1 1/4" TO 1 1/2" STA. 52+80 TO STA. 53+00.



TYPICAL SECTION OF EXISTING AND PROPOSED ROAD
STA. 53+00 TO STA. 211+00



TYPICAL SECTION OF EXISTING AND PROPOSED ROAD
STA. 211+00 TO STA. 377+00

SUMMARY OF QUANTITIES

QUANTITY	UNIT	ITEM	CODE NO.
1.5	ACRE	SEEDING, CLASS 2 (SPECIAL)	X2501000
480	TON	AGGREGATE DITCH (SPECIAL)	X2830495
1	L SUM	TRAFFIC CONTROL AND PROTECTION, (SPECIAL)	X7010216
9715	CU YD	EARTH EXCAVATION	20200100
6	CU YD	TRENCH BACKFILL	20800150
192	TON	AGGREGATE DITCH CHECKS	28000315
3912	SQ YD	PROCESSING LIME MODIFIED SOILS 12"	30200650
98	TON	LIME	30201500
1766	TON	AGGREGATE BASE COURSE, TYPE B	35101400
114	TON	AGGREGATE SURFACE COURSE, TYPE B	40200800
8,663	POUND	BITUMINOUS MATERIALS (PRIME COAT)	40600275
80,299	POUND	BITUMINOUS MATERIALS (TACK COAT)	40600290
4,734	TON	LEVELING BINDER (MACHINE METHOD), N70	40600635
2,054	SQ YD	HOT-MIX ASPHALT SURFACE REMOVAL-BUTT JOINT	40600982
88	SQ YD	TEMPORARY RAMP	40600990
11,603	TON	HOT-MIX ASPHALT BINDER COURSE, IL-19.0, N70	40603085
7,729	TON	HOT-MIX ASPHALT SURFACE COURSE, MIX "C", N70	40603315
135	TON	INCIDENTAL HOT-MIX ASPHALT SURFACING	40800050
230	SQ YD	HOT-MIX ASPHALT SURFACE REMOVAL, 3/4"	44000152
1,305	SQ YD	HOT-MIX ASPHALT SURFACE REMOVAL, 1 1/4"	44000154
4,147	TON	AGGREGATE SHOULDERS, TYPE B	48101200
78	FOOT	PIPE CULVERTS, CLASS D, TYPE 1 12"	54200217
48	FOOT	PIPE CULVERTS, CLASS D, TYPE 1 24"	54200229
2	EACH	TRAFFIC BARRIER TERMINAL, TYPE 5R	63100080*
2	EACH	TRAFFIC BARRIER TERMINAL, TYPE 1 (SPECIAL) TANGENT	63100167*
1	L SUM	MOBILIZATION	67100100
1	L SUM	TRAFFIC CONTROL AND PROTECTION, STANDARD 701306	70100460
10,132	FOOT	SHORT TERM PAVEMENT MARKING	70300100
1,130	SQ FT	SHORT TERM PAVEMENT MARKING REMOVAL	70300150
72.60	SQ FT	SIGN PANEL - TYPE 1	72000100*
308	FOOT	METAL POST - TYPE A	72800100*
105,860	FOOT	PAINT PAVEMENT MARKING-LINE 4"	78001110*

* SPECIALTY ITEMS

PAINT PAVEMENT MARKING LINE 4" (TOTAL = 105,860 FT.)

NO PASSING ZONES

E.B.L. RT. STA. 18+30 TO STA. 40+70 = 2,240 FT.
W.B.L. LT. STA. 24+70 TO STA. 44+40 = 1,970 FT.
E.B.L. RT. STA. 94+00 TO STA. 151+00 = 5,700 FT.
W.B.L. LT. STA. 103+00 TO STA. 159+50 = 5,650 FT.
E.B.L. RT. STA. 215+00 TO STA. 229+00 = 1,400 FT.
W.B.L. LT. STA. 223+00 TO STA. 238+00 = 1,500 FT.
E.B.L. RT. STA. 267+00 TO STA. 277+00 = 1,000 FT.
W.B.L. LT. STA. 272+00 TO STA. 282+00 = 1,000 FT.
E.B.L. RT. STA. 300+00 TO STA. 304+00 = 400 FT.
W.B.L. LT. STA. 308+00 TO STA. 312+00 = 400 FT.
TOTAL = 21,260 FT.

CENTERLINE STRIPE
STA. 1+00 TO STA. 377+00 = 9,400 FT.

EDGE LINE
STA. 1+00 TO STA. 377+00 = 75,200 FT.

45 MPH SIGNS (W 13-1P)

STA	SIGN PANEL-TYPE 1
RT. STA. 100+00	1 @ 2.25 SQ FT = 2.25 SQ FT
LT. STA. 112+00	1 @ 2.25 SQ FT = 2.25 SQ FT
TOTAL	TOTAL = 4.50 SQ FT

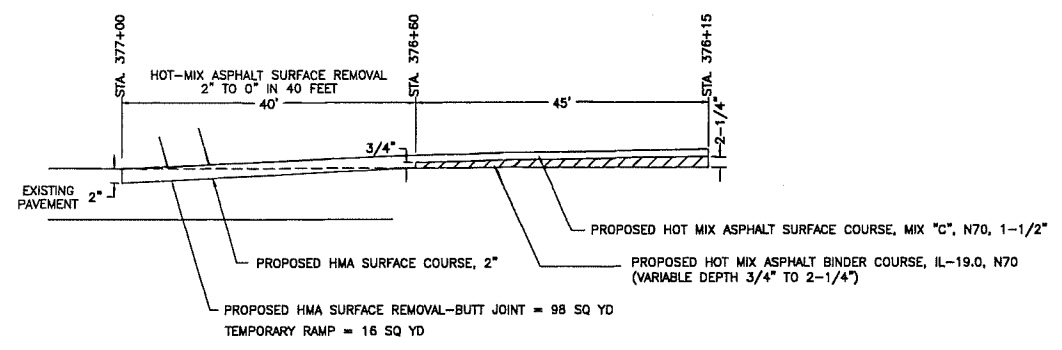
NOTE: W 13-1P SIGN TO BE IN COMBINATION WITH W 1-4R SIGN

NO. PASSING SIGNS (W 14-3)

STA	SIGN PANEL-TYPE 1	METAL POST-TYPE A
LT. STA. 18+30	1 @ 5.56 SQ FT = 5.56 SQ FT	2 @ 14 FOOT = 28 FOOT
RT. STA. 44+40	1 @ 5.56 SQ FT = 5.56 SQ FT	2 @ 14 FOOT = 28 FOOT
LT. STA. 94+00	1 @ 5.56 SQ FT = 5.56 SQ FT	2 @ 14 FOOT = 28 FOOT
RT. STA. 159+50	1 @ 5.56 SQ FT = 5.56 SQ FT	2 @ 14 FOOT = 28 FOOT
LT. STA. 215+00	1 @ 5.56 SQ FT = 5.56 SQ FT	2 @ 14 FOOT = 28 FOOT
RT. STA. 238+00	1 @ 5.56 SQ FT = 5.56 SQ FT	2 @ 14 FOOT = 28 FOOT
LT. STA. 267+00	1 @ 5.56 SQ FT = 5.56 SQ FT	2 @ 14 FOOT = 28 FOOT
RT. STA. 282+00	1 @ 5.56 SQ FT = 5.56 SQ FT	2 @ 14 FOOT = 28 FOOT
LT. STA. 300+00	1 @ 5.56 SQ FT = 5.56 SQ FT	2 @ 14 FOOT = 28 FOOT
RT. STA. 312+00	1 @ 5.56 SQ FT = 5.56 SQ FT	2 @ 14 FOOT = 28 FOOT
TOTAL	TOTAL = 55.80 SQ FT	TOTAL = 280 FOOT

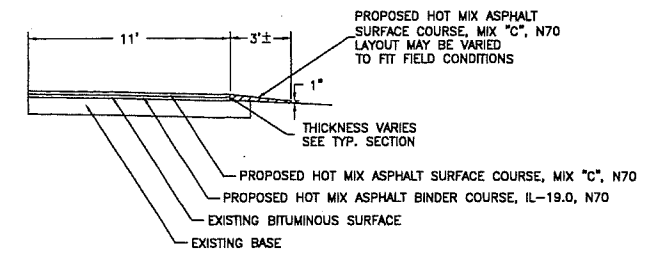
REVERSE CURVE SIGNS (W 1-4R)

STA	SIGN PANEL-TYPE 1	METAL POST-TYPE A
RT. STA. 100+00	1 @ 6.25 SQ FT = 6.25 SQ FT	1 @ 14 FOOT = 14 FOOT
LT. STA. 112+00	1 @ 6.25 SQ FT = 6.25 SQ FT	1 @ 14 FOOT = 14 FOOT
TOTAL	TOTAL = 12.50 SQ FT	TOTAL = 28 FT.



DETAIL OF BUTT-JOINT STA. 377+00

- INCIDENTAL HOT MIX ASPHALT SURFACING**
9 SIDEROADS @ 15 TONS EACH = 135 TONS
- HOT MIX ASPHALT SURFACE COURSE, MIX "C", N70**
72 ENTRANCES @ 2 TONS EACH = 144 TONS
19 MAILBOX TURNOUTS @ 2 TONS EACH = 38 TONS
5 AGG. SIDEROADS @ 4 TONS EACH = 20 TONS
- AGGREGATE SURFACE COURSE QUANTITIES**
32 ENTRANCES @ 2 TONS EACH = 64 TONS
5 AGG. SIDEROADS @ 10 TONS EACH = 50 TONS



NOTE: SIDEROADS TO BE RESURFACED TO END OF RADIUS AS DIRECTED BY THE ENGINEER (MATCH EXISTING RADIUS).

DETAIL OF RESURFACING ENTRANCES, SIDEROADS & MAILBOX TURNOUTS

CONNOR & CONNOR, Inc.
CONSULTING ENGINEERS

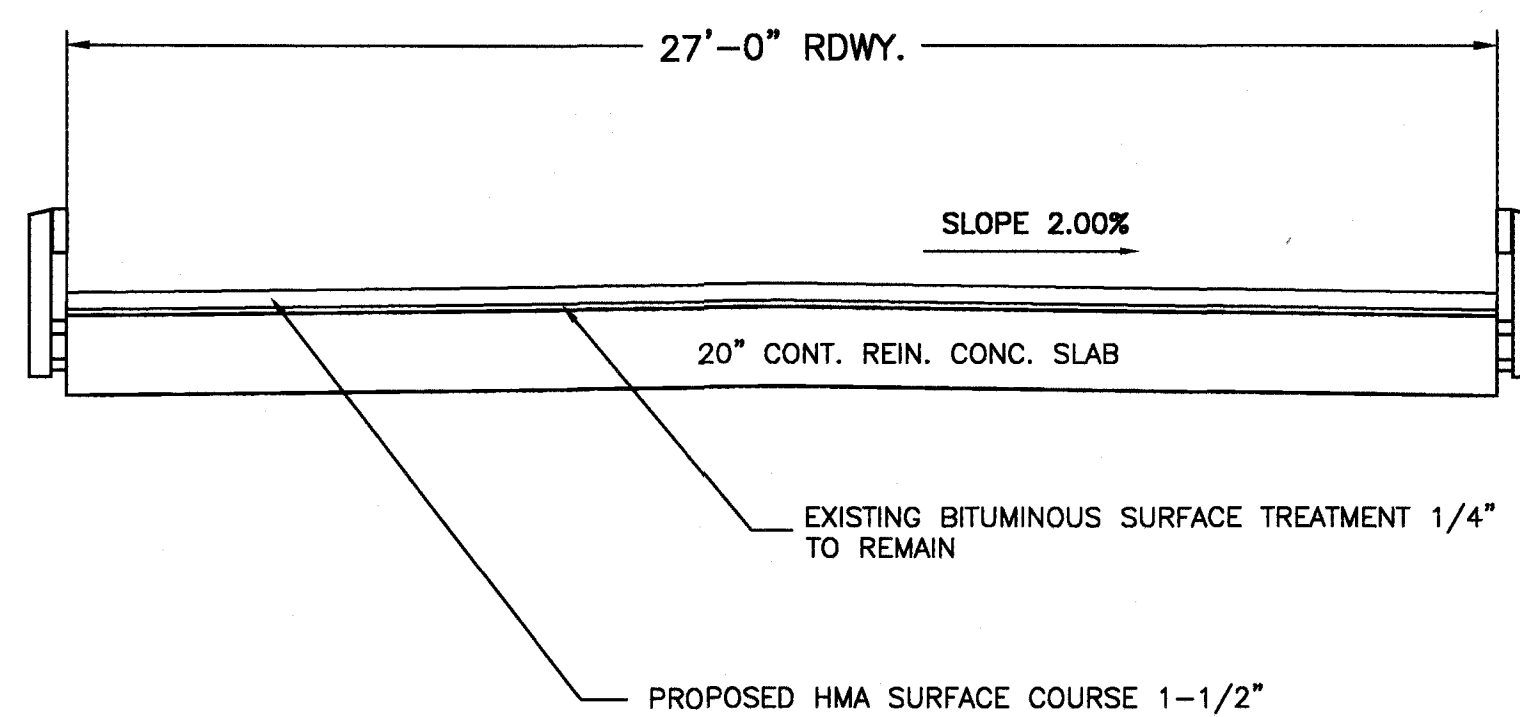
210 East Locust Street
ROBINSON, ILLINOIS 62454

Phone 618-544-8623 Fax 618-544-3012

Licensed Engineers Licensed Surveyors

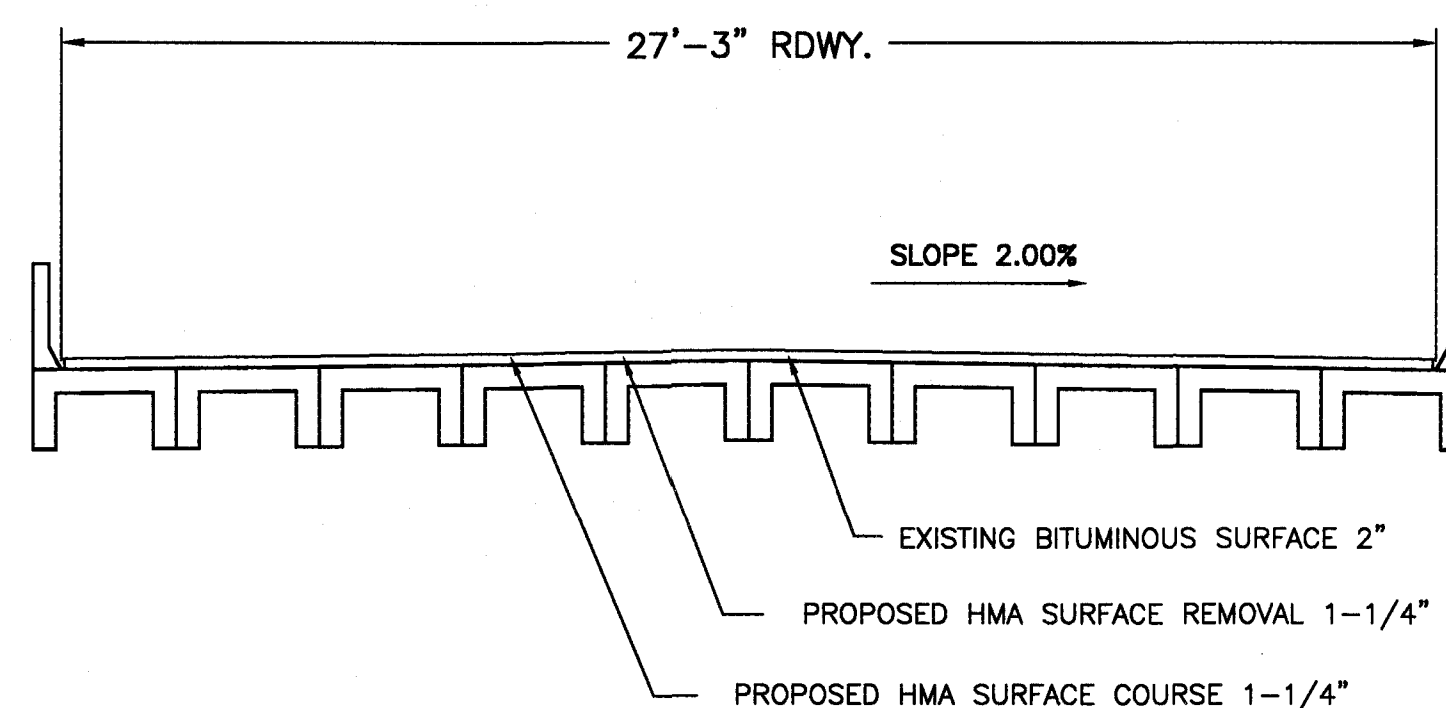
TYPICAL SECTIONS & SUMMARY OF QUANTITIES
SEC. 16-00102-00-RS
CRAWFORD COUNTY

SECTION	16-00102-00-RS	TOTAL SHEETS	8	SHEET NO.	3
COUNTY	CRAWFORD				
CONTRACT NO. 95853					



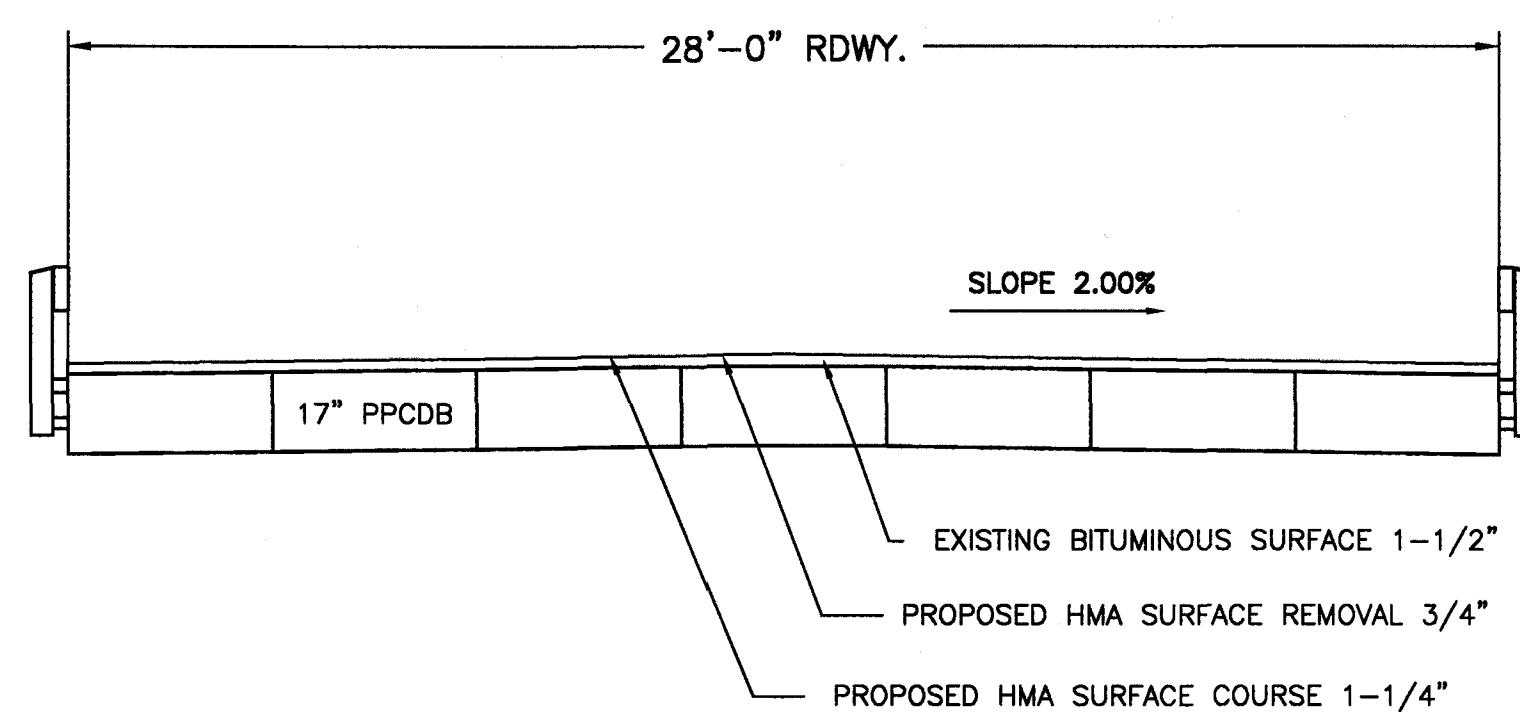
PROPOSED CROSS SECTION OF SUPERSTRUCTURE STA. 131+70

BUILT AS SECTION 91-00074-00-BR
EXIST. S.N. 017-3099



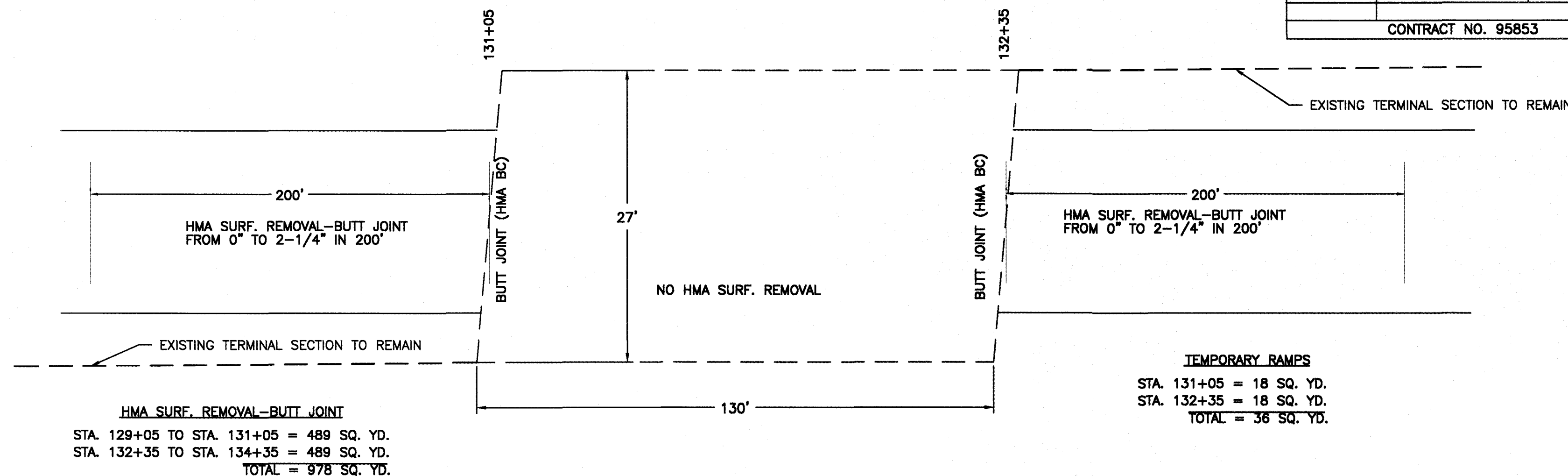
PROPOSED CROSS SECTION OF SUPERSTRUCTURE STA. 237+50

BUILT AS SECTION 47-B
EXIST. S.N. 017-3007

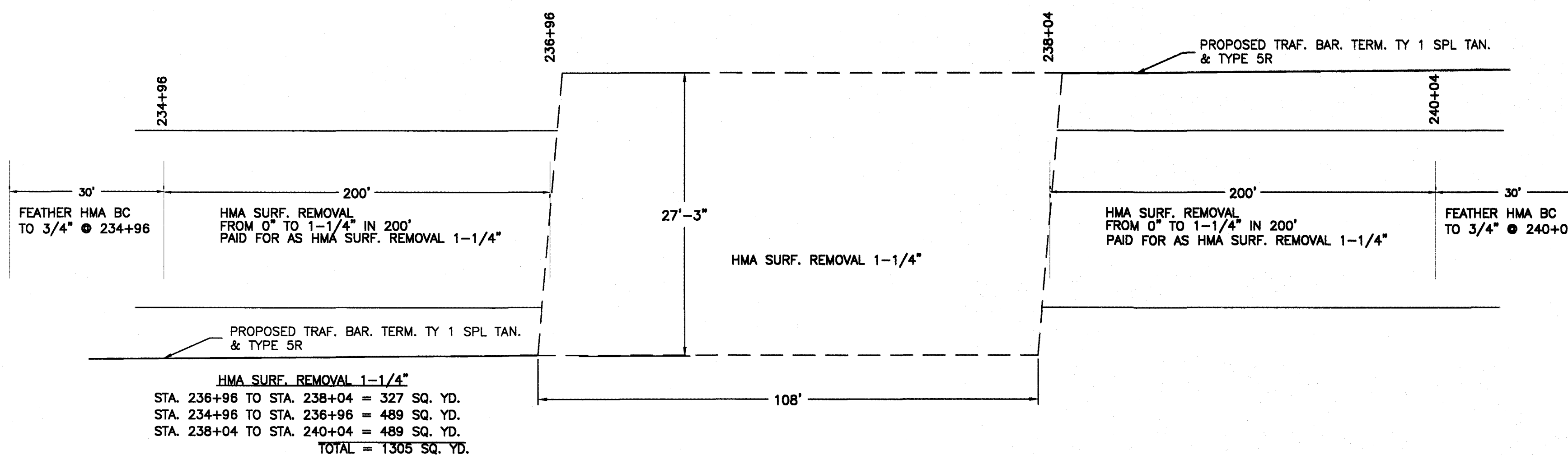


PROPOSED CROSS SECTION OF SUPERSTRUCTURE STA. 289+00

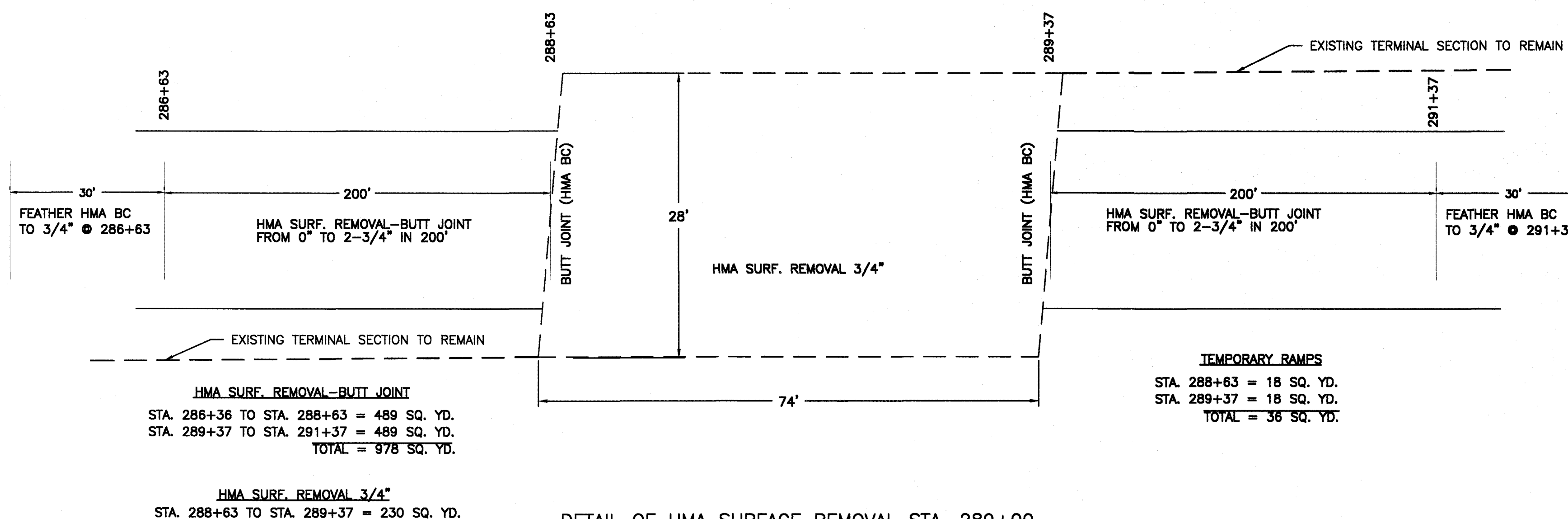
BUILT AS SECTION 01-00088-00-BR
EXIST. S.N. 017-3057



DETAIL OF HMA SURFACE REMOVAL STA. 131+70

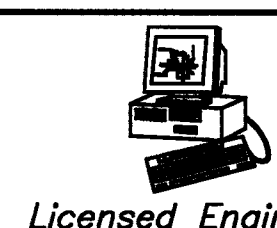


DETAIL OF HMA SURFACE REMOVAL STA. 237+50



DETAIL OF HMA SURFACE REMOVAL STA. 289+00

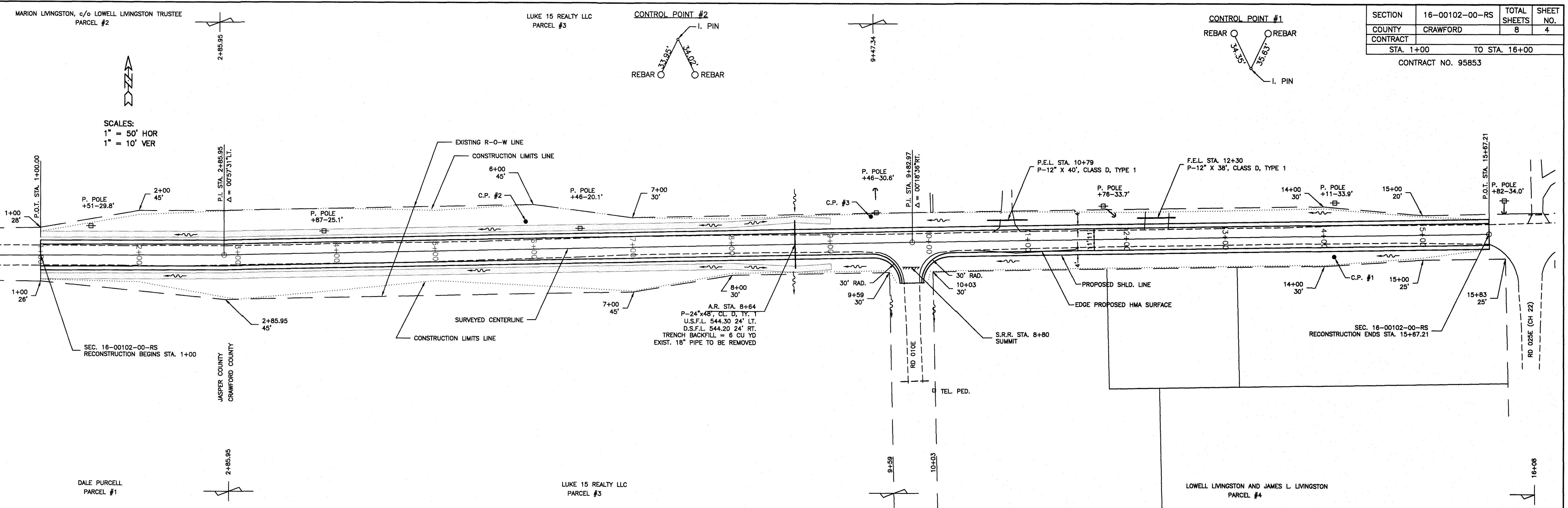
PROJECT	P-1721
DRAWN BY	DJC
SCALE	NONE
DATE	07/14/2017



CONNOR & CONNOR, Inc.
CONSULTING ENGINEERS

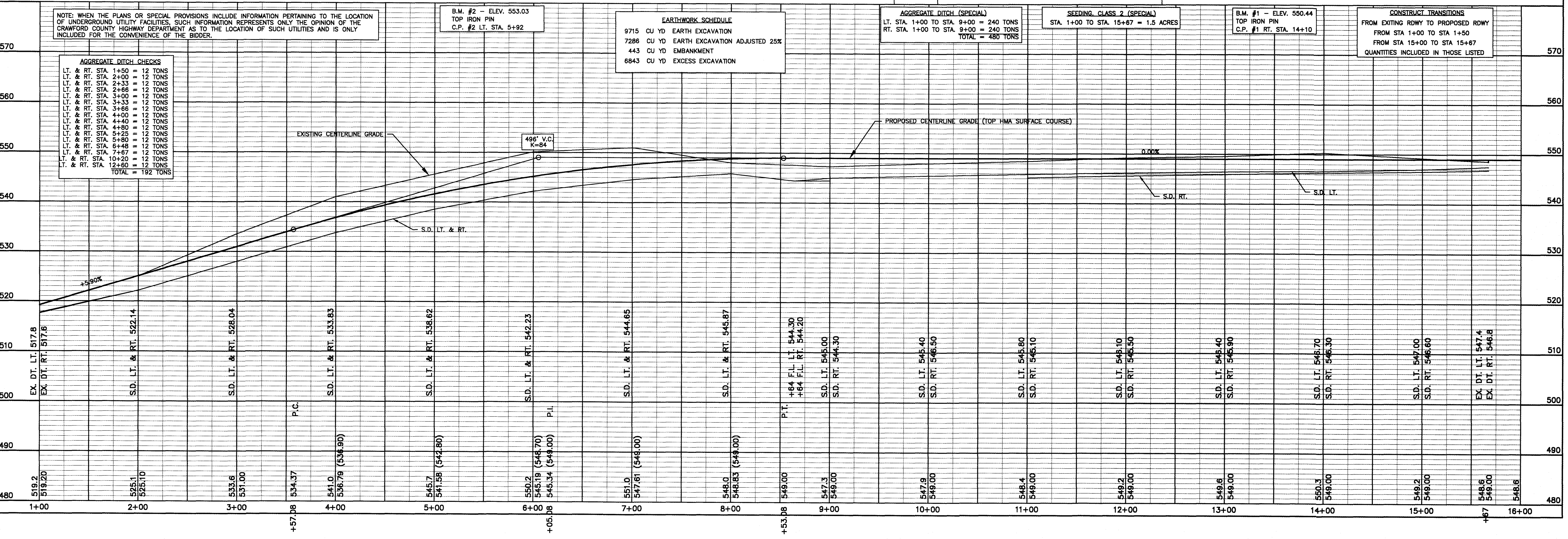
Licensed Engineers 210 East Locust Street
ROBINSON, ILLINOIS 62454
Phone 618-544-8623 Fax 618-544-3012
Licensed Surveyors

**TYPICAL SECTIONS
BRIDGES AND APPROACHES
SEC. 16-00102-00-RS
CRAWFORD COUNTY**



SECTION	16-00102-00-RS	TOTAL SHEETS	8	SHEET NO.	4
COUNTY	CRAWFORD				
CONTRACT	STA. 1+00 TO STA. 16+00				
CONTRACT NO. 95853					

SCALES:
 1" = 50' HOR
 1" = 10' VER



NOTE: WHEN THE PLANS OR SPECIAL PROVISIONS INCLUDE INFORMATION PERTAINING TO THE LOCATION OF UNDERGROUND UTILITY FACILITIES, SUCH INFORMATION REPRESENTS ONLY THE OPINION OF THE CRAWFORD COUNTY HIGHWAY DEPARTMENT AS TO THE LOCATION OF SUCH UTILITIES AND IS ONLY INCLUDED FOR THE CONVENIENCE OF THE BIDDER.

B.M. #2 - ELEV. 553.03
 TOP IRON PIN
 C.P. #2 LT. STA. 5+92

EARTHWORK SCHEDULE	
9715 CU YD	EARTH EXCAVATION
7286 CU YD	EARTH EXCAVATION ADJUSTED 25%
443 CU YD	EMBANKMENT
6843 CU YD	EXCESS EXCAVATION

AGGREGATE DITCH (SPECIAL)
 LT. STA. 1+00 TO STA. 9+00 = 240 TONS
 RT. STA. 1+00 TO STA. 9+00 = 240 TONS
 TOTAL = 480 TONS

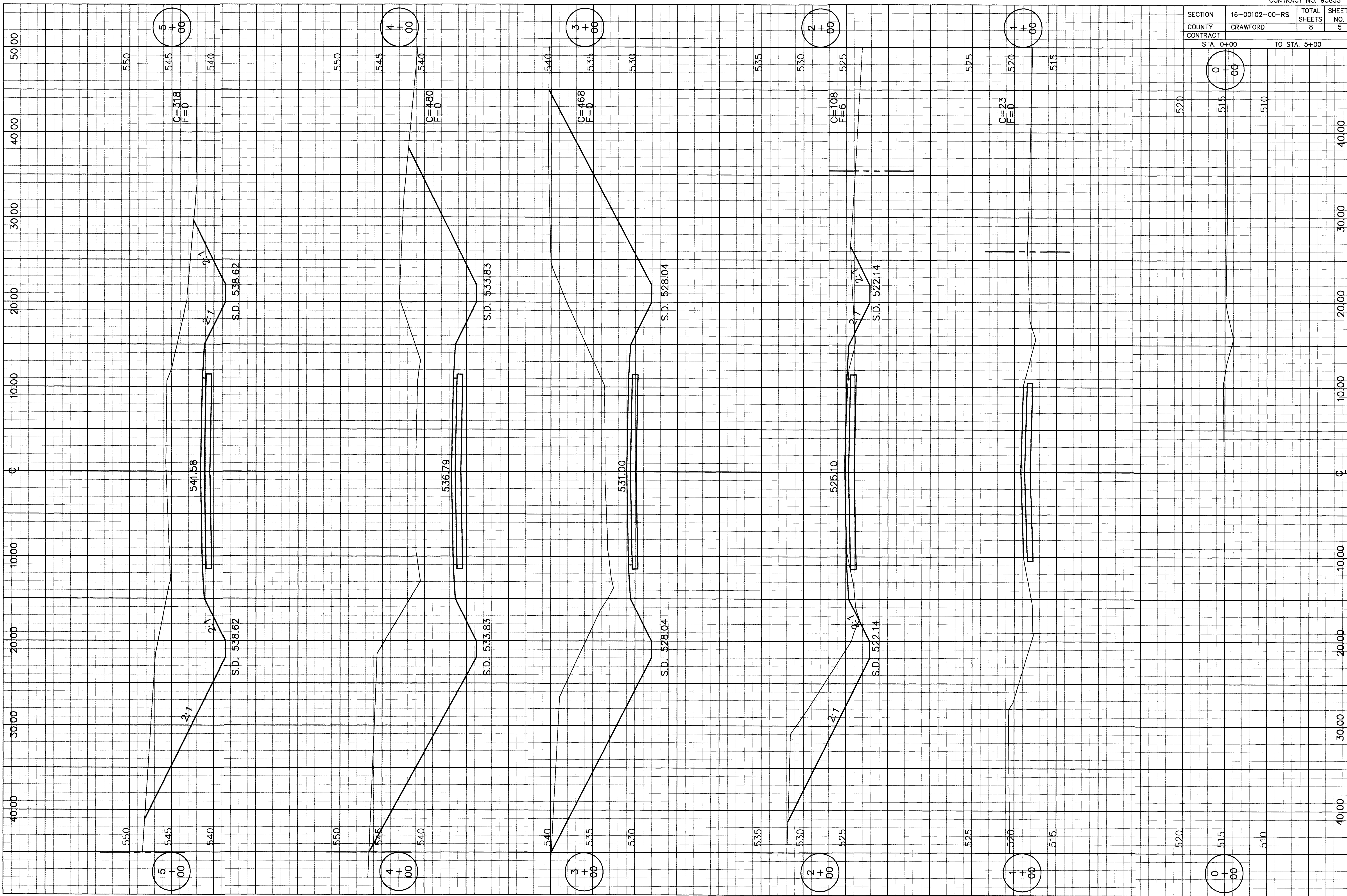
SEEDING, CLASS 2 (SPECIAL)
 STA. 1+00 TO STA. 15+67 = 1.5 ACRES

B.M. #1 - ELEV. 550.44
 TOP IRON PIN
 C.P. #1 RT. STA. 14+10

CONSTRUCT TRANSITIONS
 FROM EXISTING ROW TO PROPOSED ROW
 FROM STA 1+00 TO STA 1+50
 FROM STA 15+00 TO STA 15+67
 QUANTITIES INCLUDED IN THOSE LISTED

AGGREGATE DITCH CHECKS	
LT. & RT. STA. 1+50	= 12 TONS
LT. & RT. STA. 2+00	= 12 TONS
LT. & RT. STA. 2+33	= 12 TONS
LT. & RT. STA. 2+66	= 12 TONS
LT. & RT. STA. 3+00	= 12 TONS
LT. & RT. STA. 3+33	= 12 TONS
LT. & RT. STA. 3+66	= 12 TONS
LT. & RT. STA. 4+00	= 12 TONS
LT. & RT. STA. 4+40	= 12 TONS
LT. & RT. STA. 4+80	= 12 TONS
LT. & RT. STA. 5+25	= 12 TONS
LT. & RT. STA. 5+80	= 12 TONS
LT. & RT. STA. 6+48	= 12 TONS
LT. & RT. STA. 7+67	= 12 TONS
LT. & RT. STA. 10+20	= 12 TONS
LT. & RT. STA. 12+60	= 12 TONS
TOTAL	= 192 TONS

SECTION	16-00102-00-RS	TOTAL SHEETS	8	SHEET NO.	5
COUNTY	CRAWFORD				
CONTRACT	STA. 0+00	TO STA.	5+00		



5
+
00

4
+
00

3
+
00

2
+
00

1
+
00

0
+
00

5
+
00

4
+
00

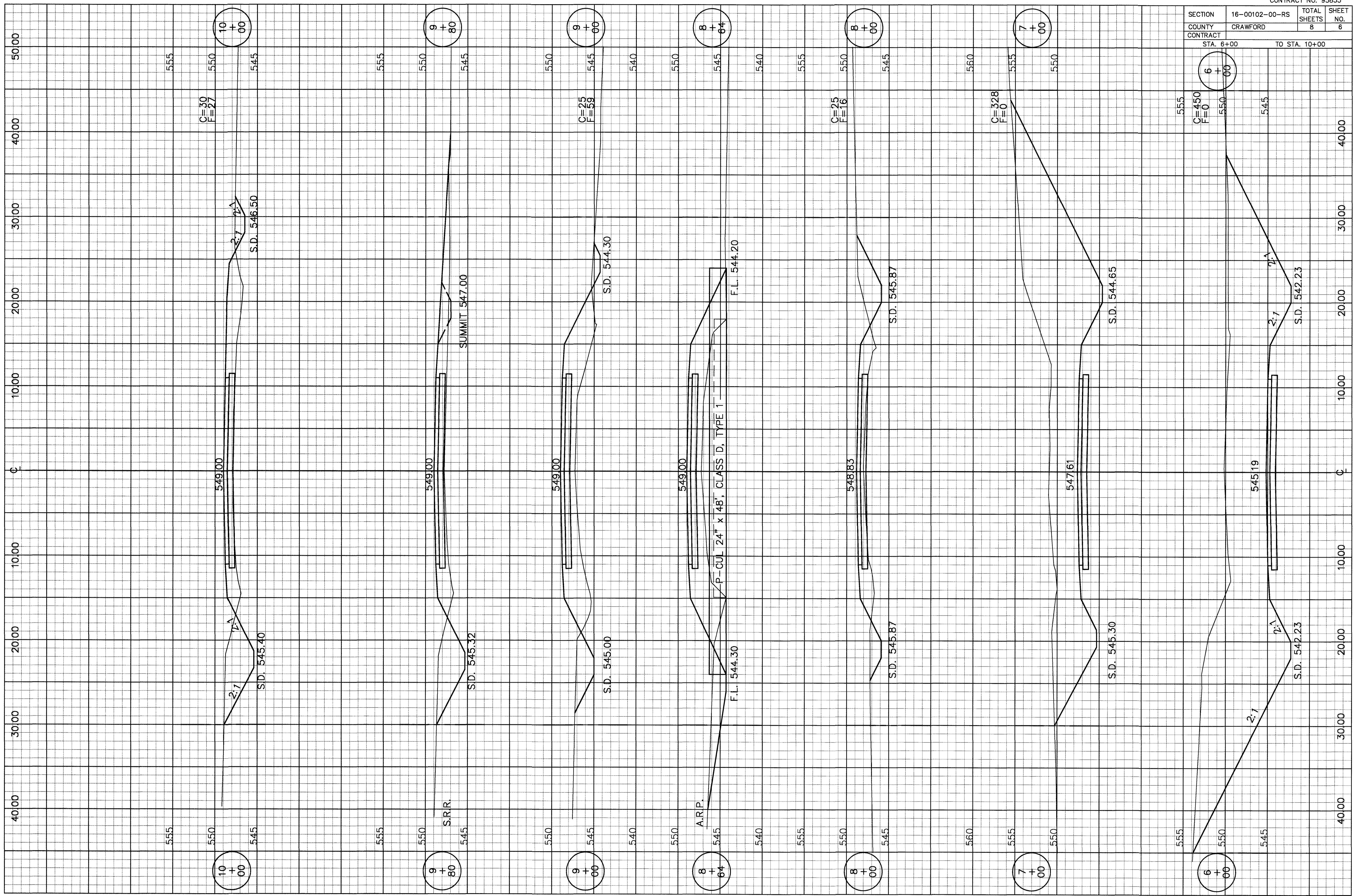
3
+
00

2
+
00

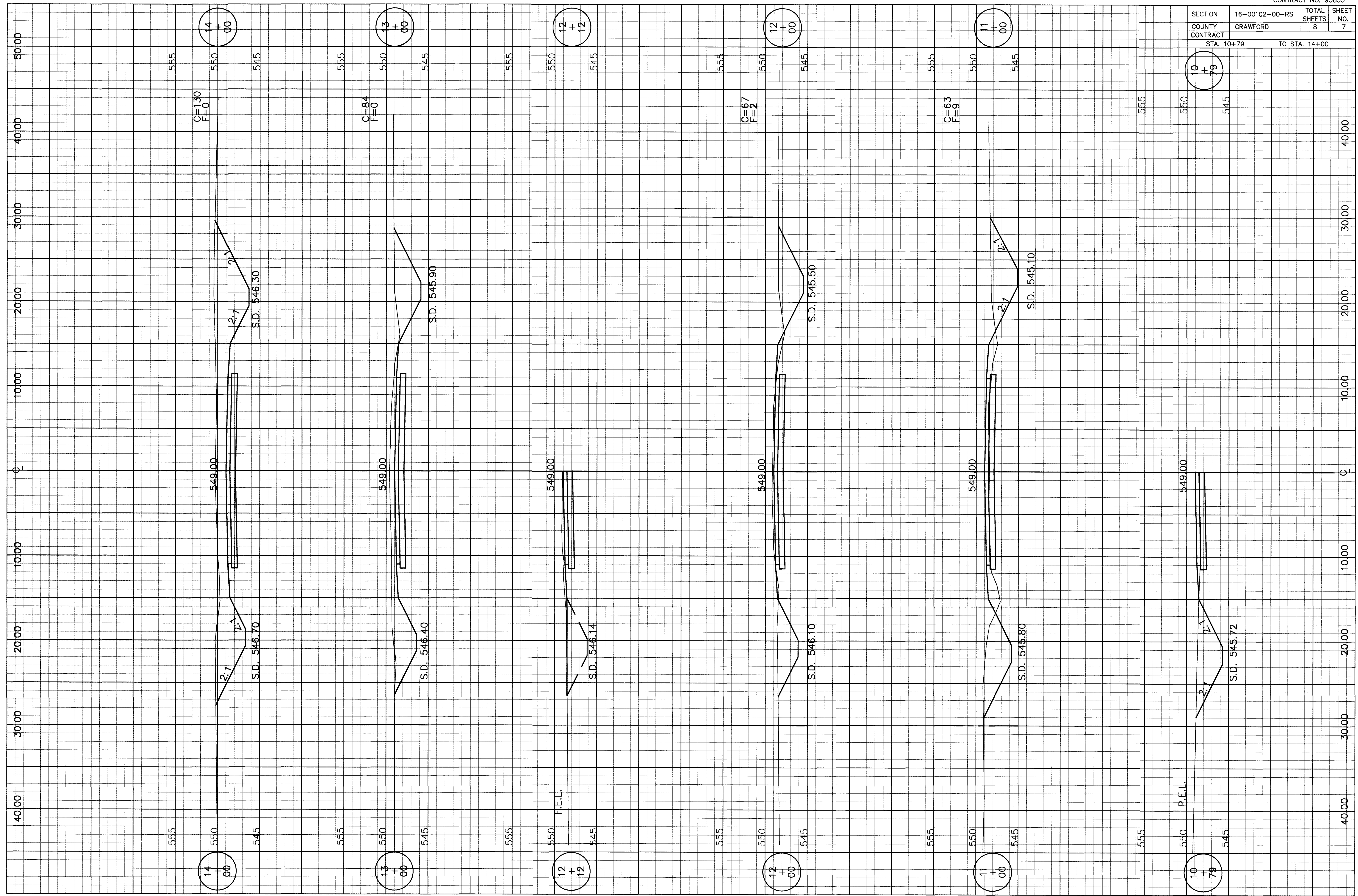
1
+
00

0
+
00

SECTION	16-00102-00-RS	TOTAL SHEETS	8	SHEET NO.	6
COUNTY	CRAWFORD				
CONTRACT	STA. 6+00 TO STA. 10+00				



SECTION	16-00102-00-RS	TOTAL SHEETS	8	SHEET NO.	7
COUNTY	CRAWFORD				
CONTRACT	STA. 10+79 TO STA. 14+00				



14
+
00

13
+
00

12
+
12

12
+
00

11
+
00

10
+
79

14
+
00

13
+
00

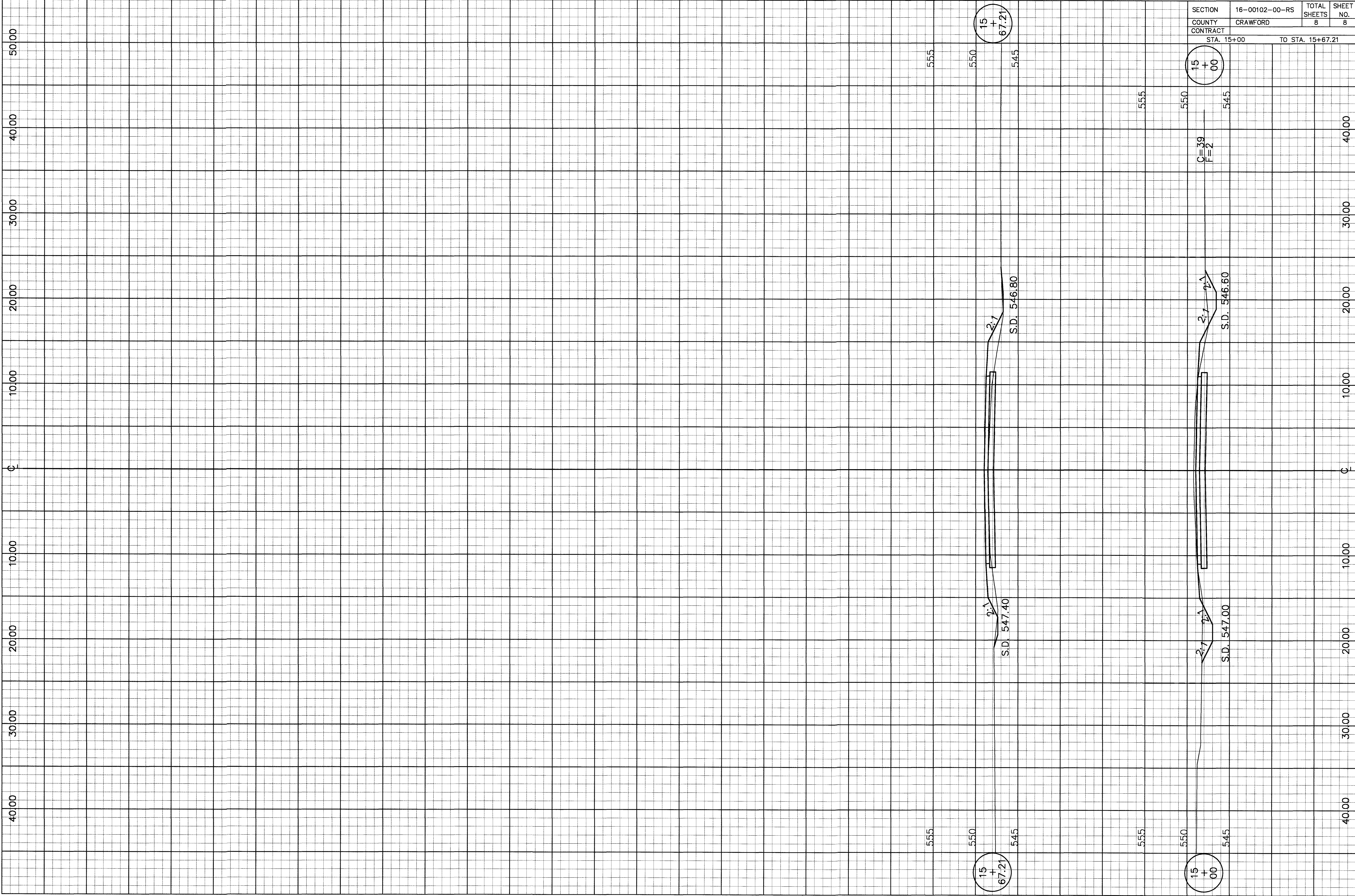
12
+
12

12
+
00

11
+
00

10
+
79

SECTION	16-00102-00-RS	TOTAL SHEETS	8	SHEET NO.	8
COUNTY	CRAWFORD				
CONTRACT	STA. 15+00 TO STA. 15+67.21				



15
+
00

C=39
F=2

2:1
S.D. 546.80

2:1
S.I.D. 547.40

15
+
00

15
+
67.21

15
+
67.21

555

550

545

555

550

545

555

550

545

555

550

545