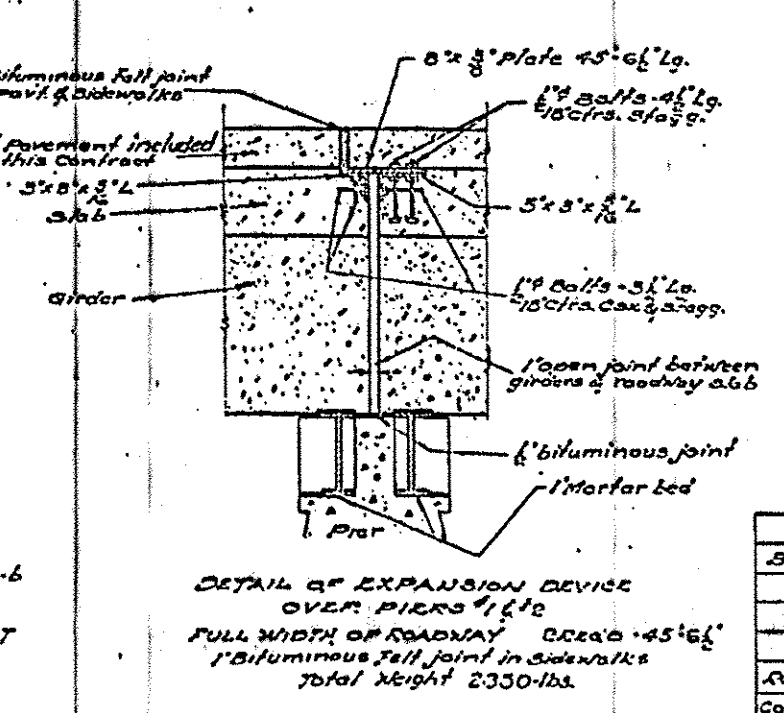
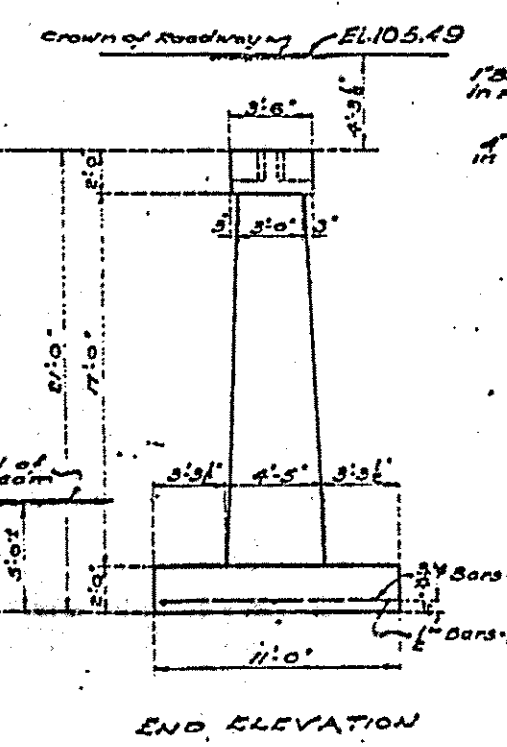
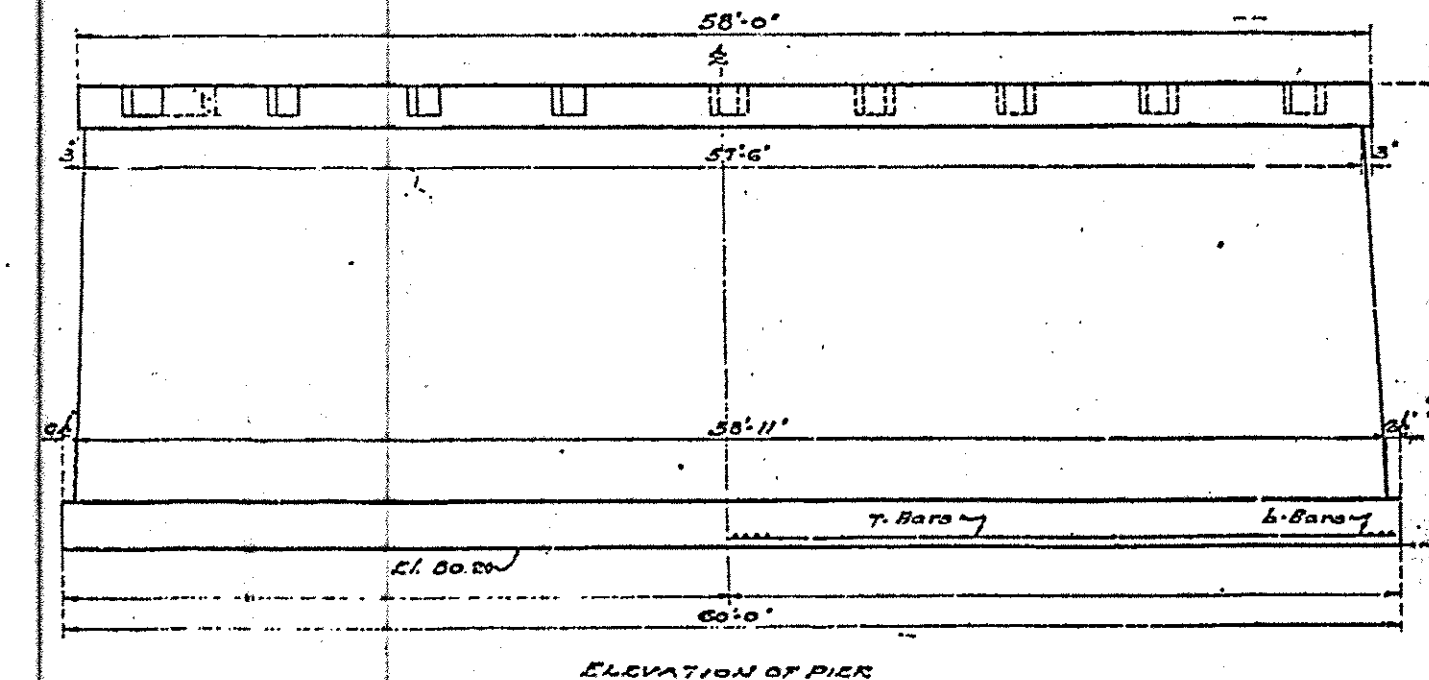
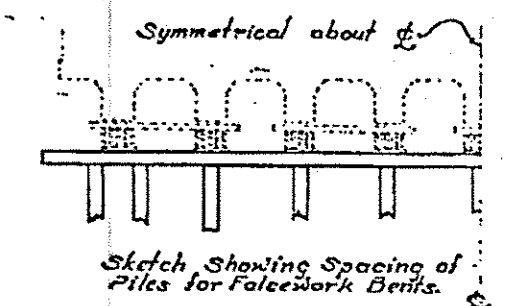
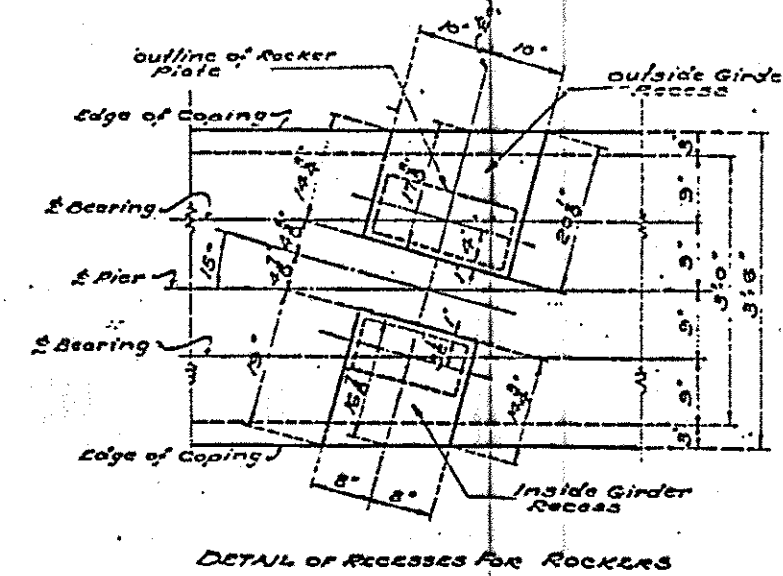
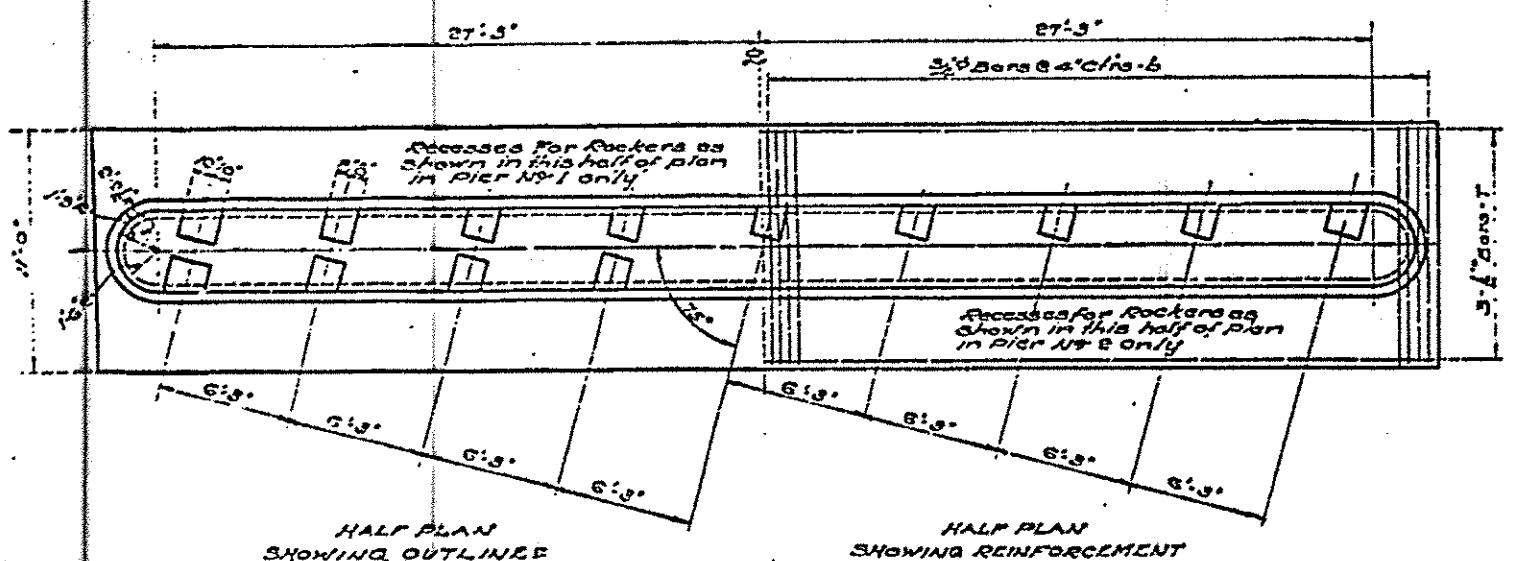
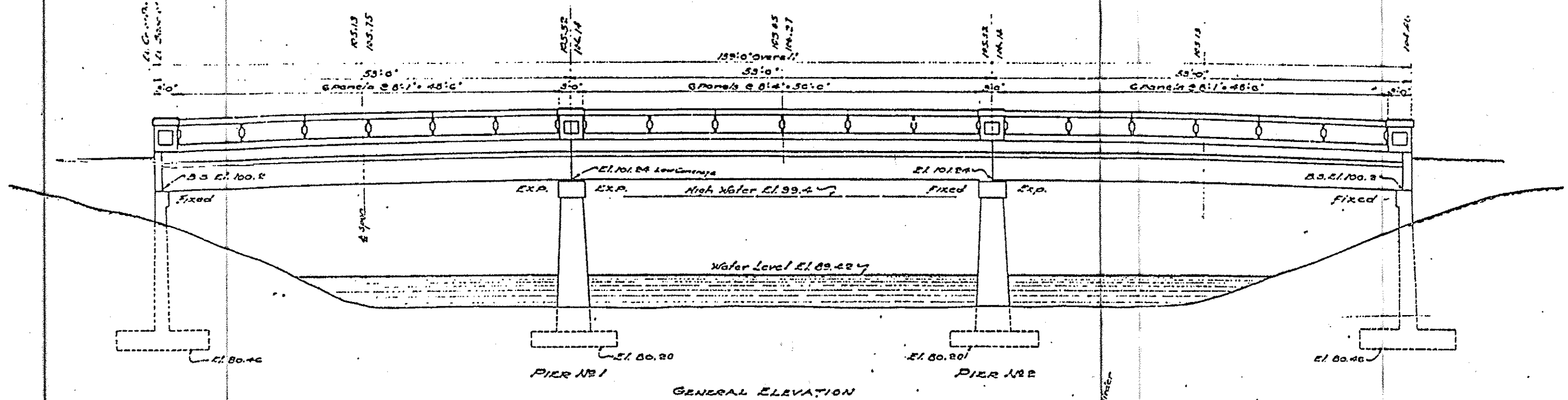


DEPARTMENT OF HIGHWAYS
COOK COUNTY

PLAN	SECTION	COUNTY	TOWNSHIP	RANGE
3527	12891	COOK	22	12
STA.	TO STA.			
REL. PLAN ELEV. AS	BEFORE	REL. AS PROJECT		

SHEET 7 OF 9



FOR TWO PIERS

BILL OF MATERIAL			
Bars	WS	Size	Length
6	360	3/8"	10'-9"
7	70	1/2"	5'-0"

Reinforcing Steel / Lbs. 6121
Concrete Cu. Yds. 332.67

NOTE
Class A Concrete to be used throughout. Proportions 1-2 1/2-4.
All edges of exposed concrete to be beveled by use of 1/2 inch triangular moulding.
All reinforcing bars shall be either new billet steel or rail steel conforming to the requirements specified in Art. 474 of the County Specifications for Highways and Bridges. All bars must be obtained in full lengths indicated in the Bill of Material.
All reinforcing steel shall be securely wired in position before concrete is placed.

FOR INFORMATION ONLY

ILLINOIS DEPARTMENT OF TRANSPORTATION
RAND ROAD
OVER DES PLAINES RIVER
SN 016-0362

SCALE: VERT. _____
HORIZ. _____
DATE _____ DRAWN BY _____
CHECKED BY _____

Approved: *Mary 17 22*
19. 2510
COMPUTER PLOT
DRAWN BY D. J. [unclear]
CHECKED BY [unclear]
BY 8-10-27 [unclear]

