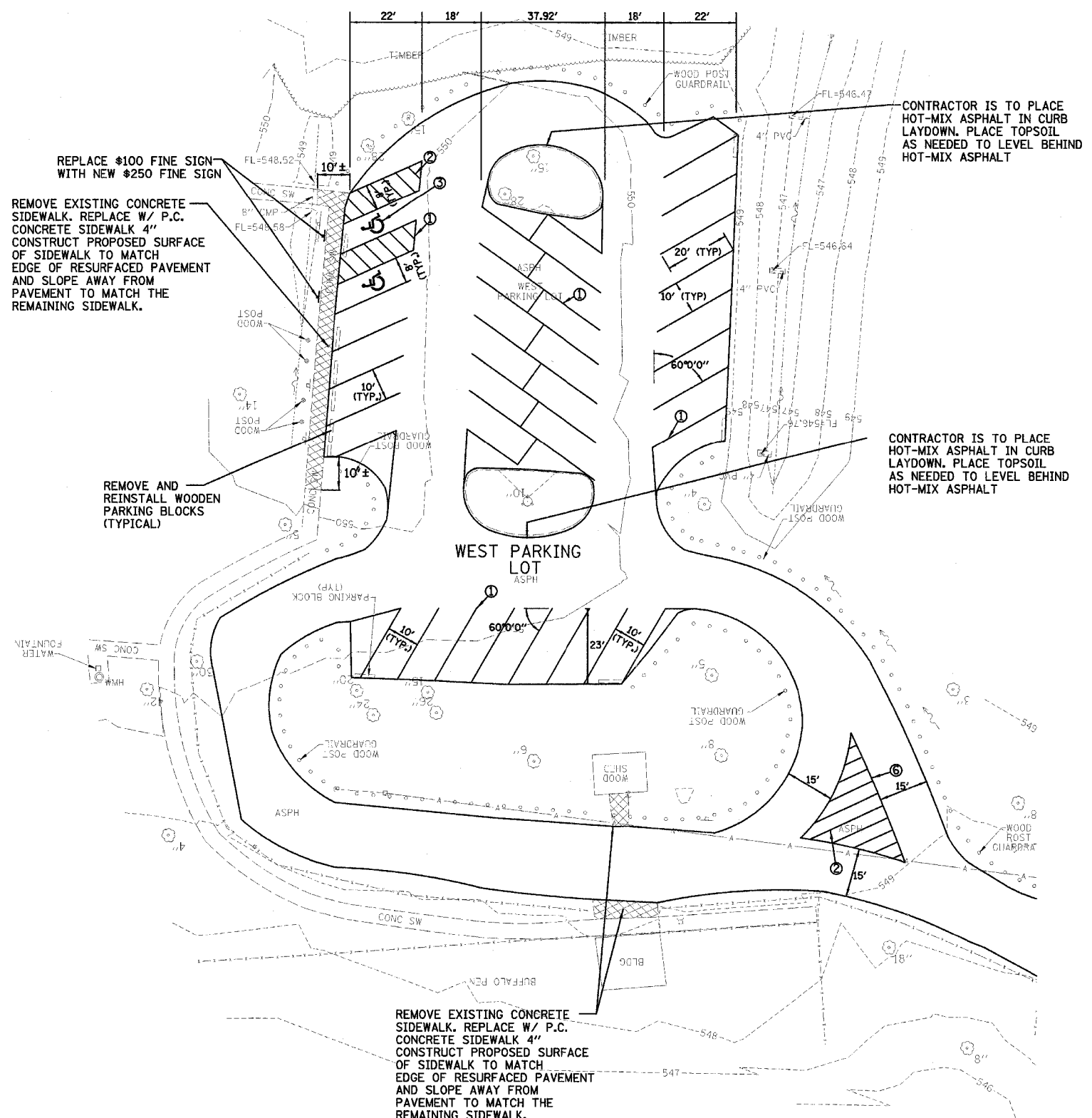


F.A. RTE.	SECTION	COUNTY	TOTAL SHEETS	SHEET NO.
	PARK ROADS	LASALLE	38	18
STA.		TO STA.		
FED. ROAD DIST. NO.		ILLINOIS	FED. AID PROJECT	
IDNR PROJECT NO. 02-03-020				

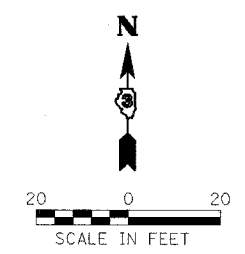


CONTRACTOR IS TO PLACE HOT-MIX ASPHALT IN CURB LAYDOWN. PLACE TOPSOIL AS NEEDED TO LEVEL BEHIND HOT-MIX ASPHALT

CONTRACTOR IS TO PLACE HOT-MIX ASPHALT IN CURB LAYDOWN. PLACE TOPSOIL AS NEEDED TO LEVEL BEHIND HOT-MIX ASPHALT

LEGEND

- ① YELLOW THERMOPLASTIC PAVEMENT MARKING-LINE 4"
- ② YELLOW THERMOPLASTIC PAVEMENT MARKING-LINE 4" DIAGONAL LINES @ 45° @ 4' CENTERS
- ③ YELLOW THERMOPLASTIC PAVEMENT MARKING SYMBOL
- ④ WHITE THERMOPLASTIC STOP BAR PAVEMENT MARKING LINE - 24" SOLID
- ⑤ YELLOW THERMOPLASTIC PAVEMENT MARKING-LINE 4" SOLID, 10' LONG, 30' GAP
- ⑥ YELLOW THERMOPLASTIC PAVEMENT MARKING-LINE 6"
- ⑦ WHITE THERMOPLASTIC PAVEMENT MARKING-LINE 24"
- NEW POST WITH PROPER HANDICAP REGULATORY SIGN (#250.00)



REVISIONS	
NAME	DATE

ILLINOIS DEPARTMENT OF TRANSPORTATION

IDOT / IDNR
BUFFALO ROCK STATE PARK
PAVEMENT MARKING PLANS

SCALE: VERT. _____
HORIZ. _____
DATE: 12/12/06

DRAWN BY: JJ
CHECKED BY: PJM