

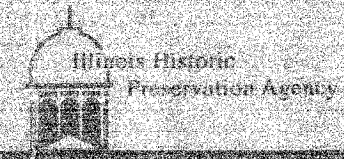
F.A. RTE.	SECTION	COUNTY	TOTAL SHEETS	SHEET NO.
		ST. CLAIR	18	14
STA.		TO STA.		
FED. ROAD DIST. NO.		ILLINOIS FED. AID PROJECT		
CONTRACT NO. 44966				



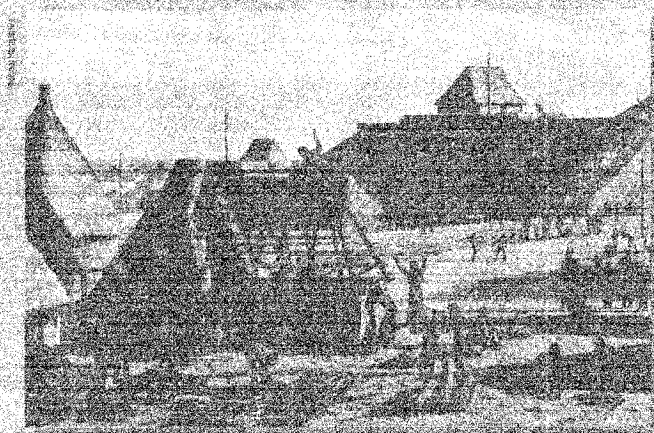
Stone tablet on a shell fragment

Grand Plaza

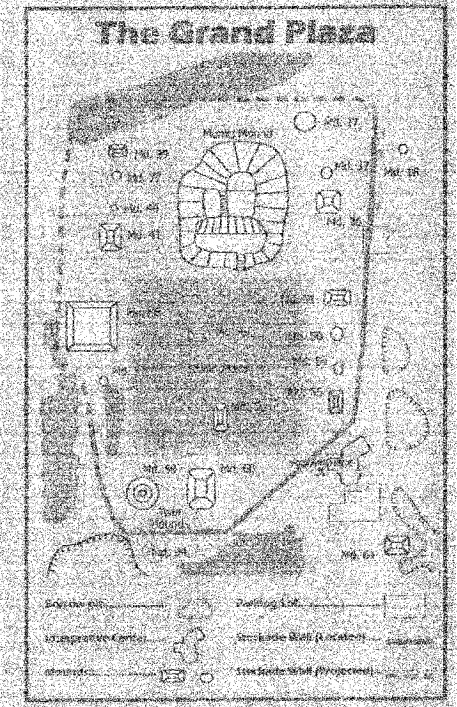
Heart of the City



Cahokia Mounds State Historic Site

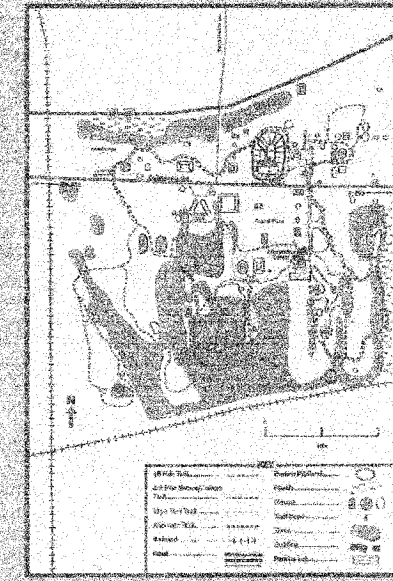


View of mounds and structures in and around the Grand Plaza.



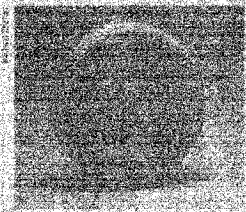
The 46-acre Grand Plaza was bounded on the north by Mounds 17 and 23 and on the south by the Twin Mounds (20 & 21). Mounds 22 and 56 are to their north. The Plaza, bounded by Mounds 23, 24, 25, and 30 runs for about 1000 feet through 10 acres of oak tree overgrowth.

Site Trail Guide

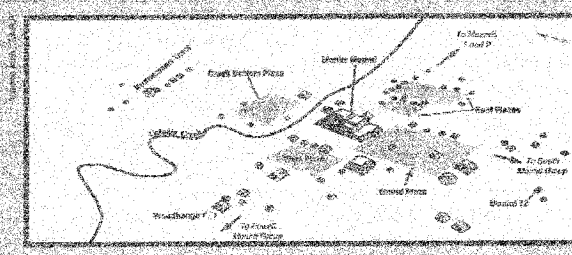


A view of Cahokia looking north between the Twin Mounds across the Grand Plaza. In the foreground, a shallow field and raised mounds can be seen along the plaza's edge, in front of the mounds of the site.

The heart of Cahokia was the Grand Plaza, situated between Mound 17 and the Twin Mounds. Archaeological testing has confirmed that the plaza was, in part, artificially created by filling in low areas and reducing high points to create a flat, prepared surface. It was here that public gatherings, markets and festivals would take place and the chief could address the assembled masses from Mound 17.



The class of clay pipe, or pipe called by archaeologists "bottle pipes," was apparently popular at Cahokia. Many clay pipe stems, or stems, have been found here, such as the one from Mound 22 (left). The pipe was closed by a flat head, and the stem was decorated with raised spiral bands of red ochre. The pipe is thought to have been used for smoking tobacco. A clay pipe like this is found from Cahokia deposits at other sites, such as the one shown here.



Large groups of people with goods met at the Plaza for trade, social, and political events. Artifacts were found throughout the site.

The Grand Plaza is a large, flat, open area that was used for public gatherings, markets, and festivals. It was here that the chief could address the assembled masses from Mound 17.

DISTRICT PROJECT ENGINEER - LANCE KIDD

REVISIONS	
NAME	DATE

ILLINOIS DEPARTMENT OF TRANSPORTATION
SIGN GRAPHICS 2
 IDNR / IHPA STATEWIDE
 SIDEWALK IMPROVEMENTS
 CAHOKIA MOUNDS STATE
 HISTORIC SITE

SCALE: NTS
 DATE: 2-26-07

DRAWN BY: EJR
 CHECKED BY: GWV