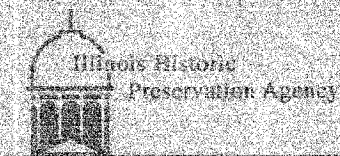




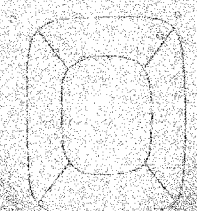
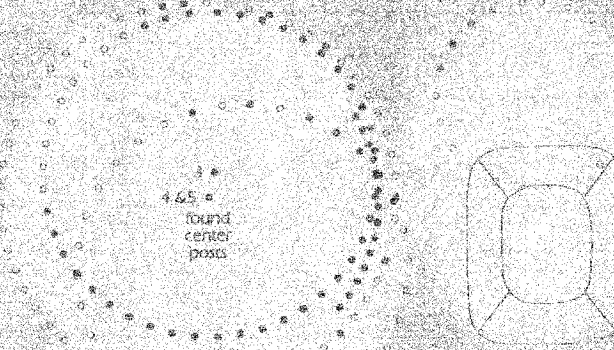
Woodhenge

A prehistoric solar calendar



Cahokia Mounds State Historic Site

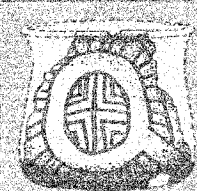
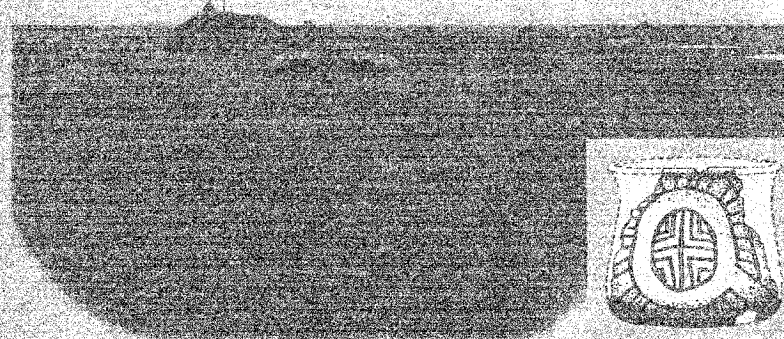
The 5 Woodhenge circles and identified center points



Site Trail Guide



NOTES:
FULL-COLOR, ELECTRONIC FILE GRAPHICS WILL BE MADE AVAILABLE TO CONTRACTOR FOR EMBEDDED FIBERGLASS SIGN PRODUCTION.



Drawing of a reconstructed boat from fragments found in a pit near the winter solstice pole. Its symbols represent the sun, the rising line, earth, and the four directions (circle and cross).

At least five large post-circle monuments were built at this location from AD 1100 to 1200, each with a different diameter and number of posts. Woodhenge III is the circle most extensively excavated and is the one reconstructed here, in the original location. The posts on the west side are missing as that area was destroyed by a highway borrow pit before the existence of Woodhenge was known.

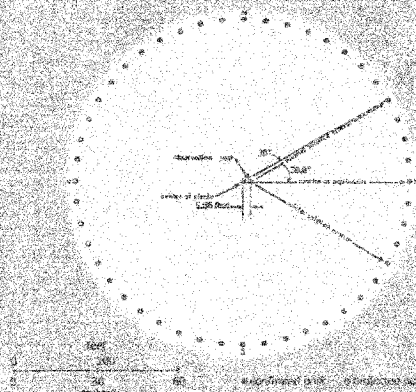
The sun rising above the bluffs to the east aligns with certain posts on the perimeter, as viewed from the central observation post. The most important alignments are the winter and summer solstices, marking the southernmost and northernmost sunrise positions, and the fall and spring equinoxes, when the sun rises due east, midway between the solstice posts. Also, at the equinoxes the rising sun appears to emerge from the front of Monk's Mound, perhaps confirming a link between the sun and the chief who ruled from the top of the mound.

The excavations also revealed hundreds of holes and pits, showing this was a residential area before and after the construction of the Woodhenges. Fragments of wood in some of the holes indicate that red cedar, a sacred wood for most Indians, was used for the posts.



Excavations and studies with the observation post held at the "Solstice position" caused the observer to see earth as that same person saw able to stand and read about the solar calendar alignments.

Circle Sequence	Diameter in feet	# of Posts
Woodhenge I	240	24
Woodhenge II	408	36
Woodhenge III	410	48 (reconstructed in its original location)
Woodhenge IV	476	60
Woodhenge V	440	12 (in the summer sun) (but if complete should be 72)
confirming post		
projected post		



Woodhenge III was reconstructed at its original site. Observer's post was placed east of center post to form an angle of 20.8 degrees needed to sight solstices at ground level.

REVISIONS	
NAME	DATE

ILLINOIS DEPARTMENT OF TRANSPORTATION

SIGN GRAPHICS 6

IDNR / IHPA STATEWIDE SIDEWALK IMPROVEMENTS CAHOKIA MOUNDS STATE HISTORIC SITE

SCALE: NTS
DATE: 2-26-07

DRAWN BY: EJR
CHECKED BY: GWV