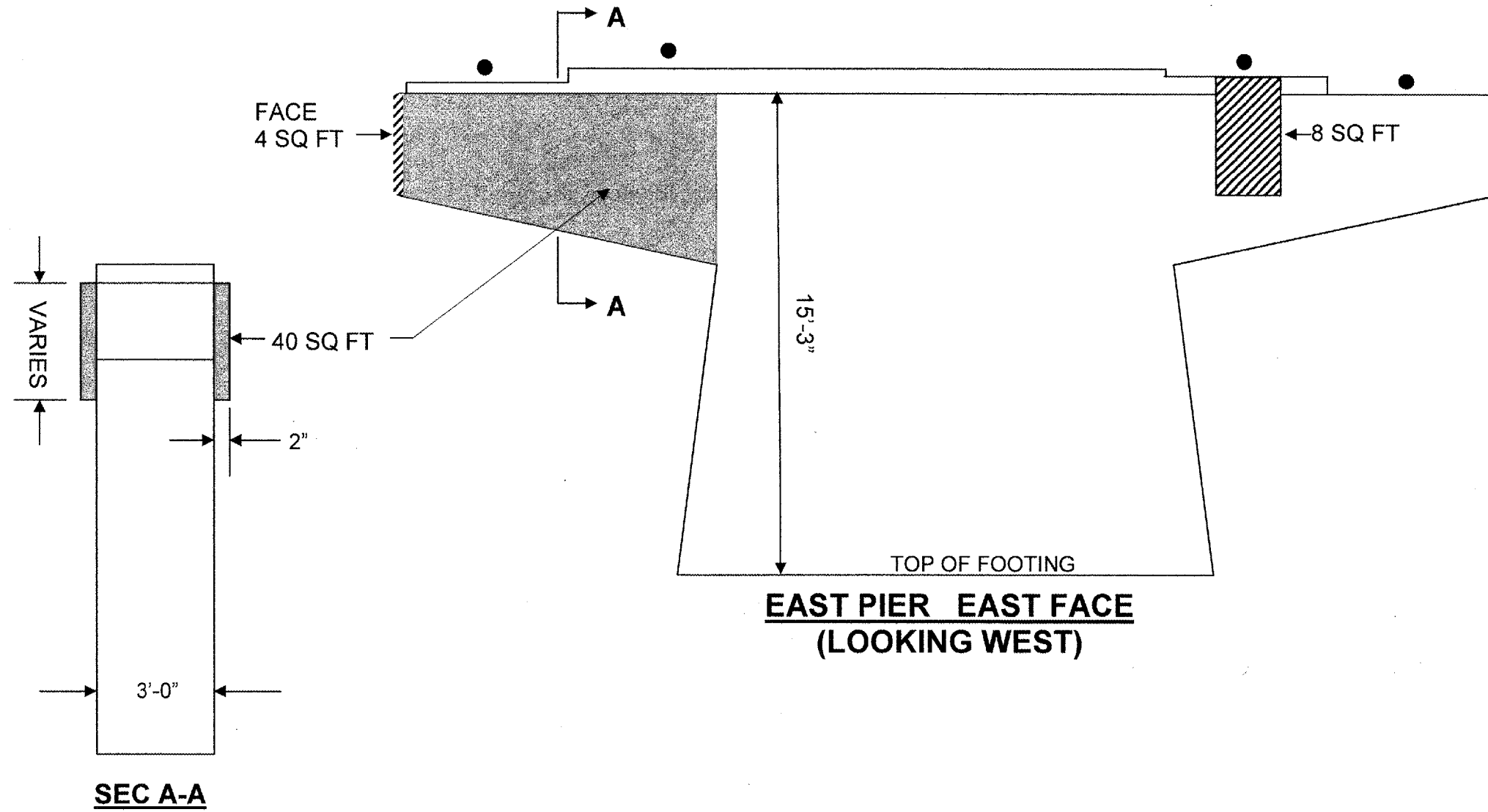


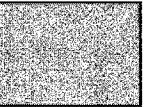
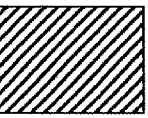
ROUTE	SECTION	COUNTY	TOTAL SHEETS	SHEET NUMBER
FAI 80	99-4HB-1-I-1	WILL	12	5

CONTRACT NO: 60B24
SHEET 1 OF 8



BEAM REACTIONS TABLE

	SPAN 2	SPAN 3
R _{DL}	47.7K	21.7K
R _{LL}	37.0K	32.1K
R _{IMP}	9.0K	9.6K
R _{TOTAL}	93.7K	63.4K

- TEMPORARY SHORING & CRIBBING
-  STRUCTURAL REPAIR OF CONCRETE, DEPTH ≤ 5" (SPECIAL) SEE SPECIAL PROVISIONS
-  STRUCTURAL REPAIR OF CONCRETE, DEPTH ≤ 5"

FOR QUANTITIES SEE SHEET 2 OF 8

SHEET 1 OF 2

ILLINOIS DEPARTMENT OF TRANSPORTATION

EAST PIER
EB I-80 OVER RICHARD ST
SN 099-0064