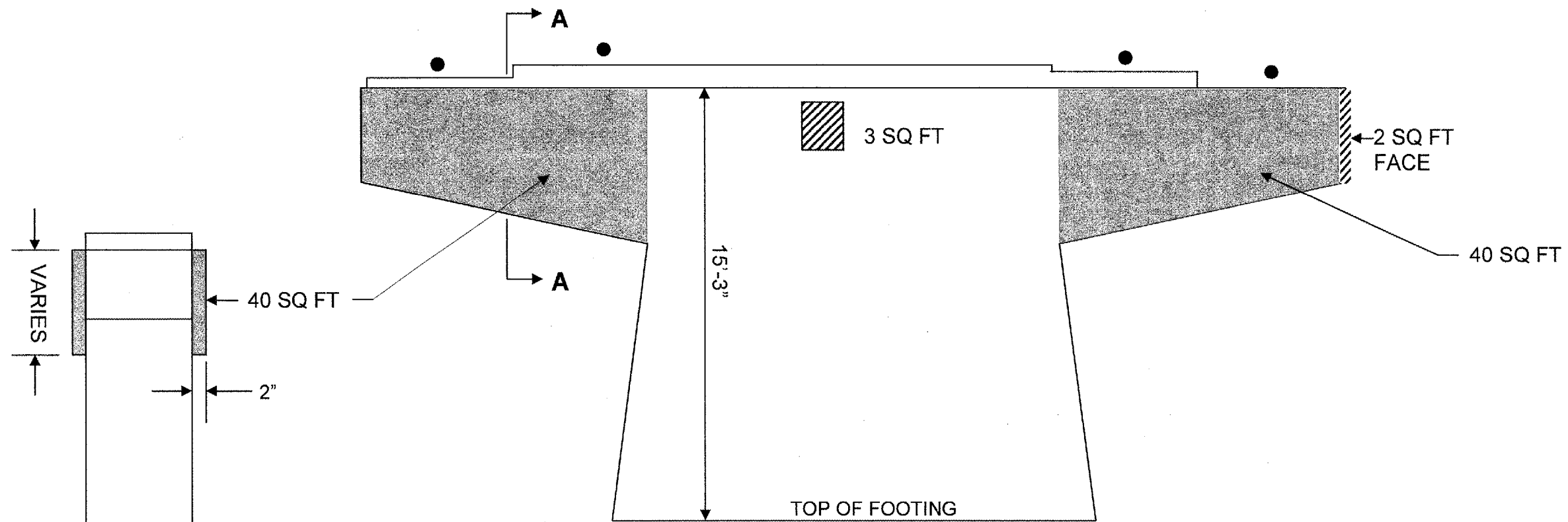


ROUTE	SECTION	COUNTY	TOTAL SHEETS	SHEET NUMBER
FAI 80	99-4HB-1-I-1	WILL	12	7

CONTRACT NO: 60B24
SHEET 3 OF 8



**WEST PIER EAST FACE
(LOOKING WEST)**

BEAM REACTIONS TABLE

	SPAN 1	SPAN 2
R _{DL}	21.1K	47.7K
R _{LL}	31.9K	37.0K
R _{IMP}	9.6K	9.0K
R _{TOTAL}	62.6K	93.7K

● TEMPORARY SHORING & CRIBBING

 STRUCTURAL REPAIR OF CONCRETE, DEPTH ≤ 5" (SPECIAL)
SEE SPECIAL PROVISIONS

 STRUCTURAL REPAIR OF CONCRETE, DEPTH ≤ 5"

FOR QUANTITIES SEE SHEET 4 OF 8

SHEET 1 OF 2

ILLINOIS DEPARTMENT OF TRANSPORTATION

**WEST PIER
EB I-80 OVER RICHARD ST
SN 099-0064**