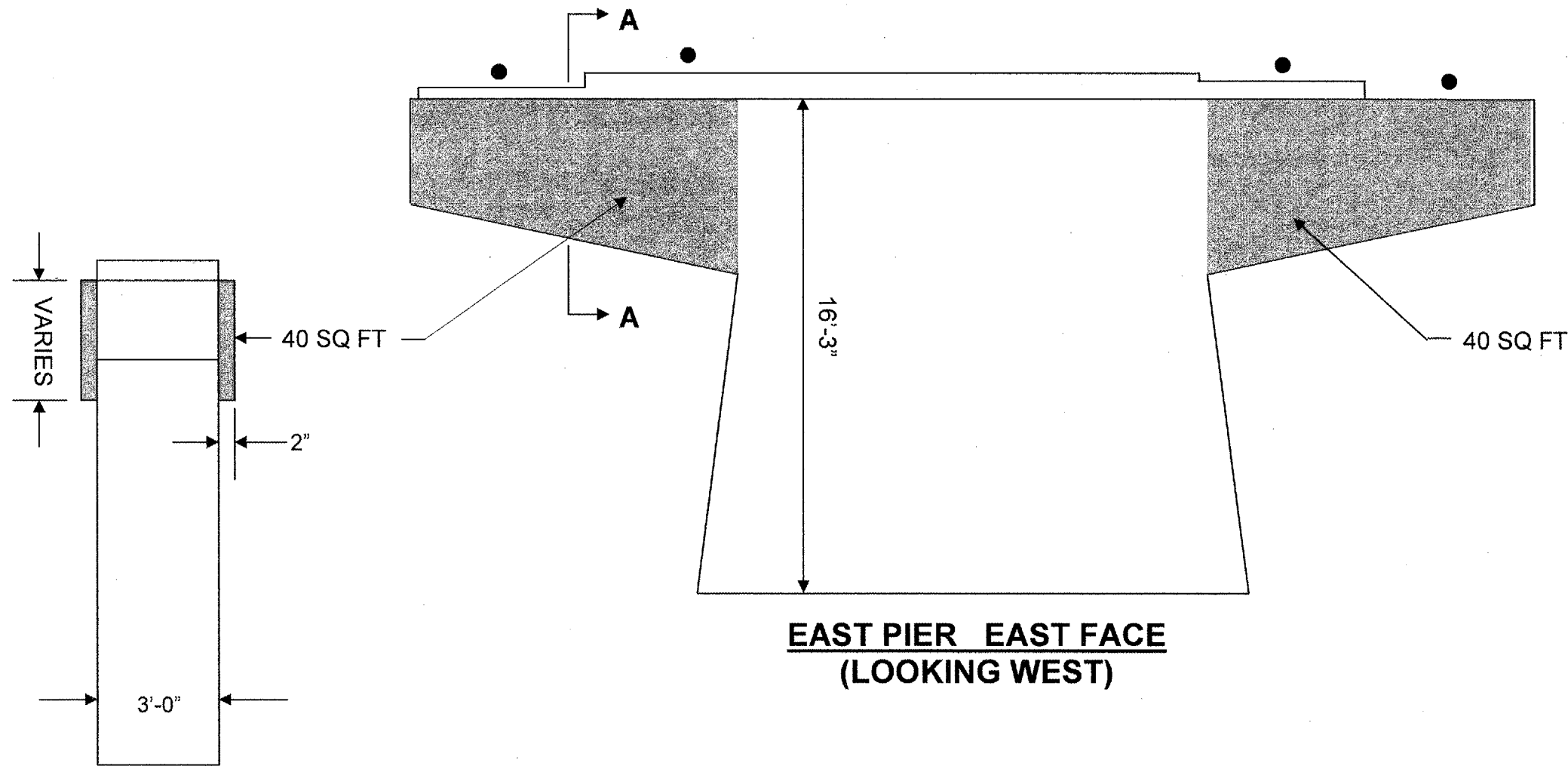


ROUTE	SECTION	COUNTY	TOTAL SHEETS	SHEET NUMBER
FAI 80	99-4HB-1-I-1	WILL	12	9

CONTRACT NO: 60B24  
SHEET 5 OF 8



**EAST PIER EAST FACE  
(LOOKING WEST)**

**BEAM REACTIONS TABLE**

	SPAN 2	SPAN 3
R <sub>DL</sub>	47.7K	21.7K
R <sub>LL</sub>	37.0K	32.1K
R <sub>IMP</sub>	9.0K	9.6K
R <sub>TOTAL</sub>	93.7K	63.4K

**SEC A-A**

- TEMPORARY SHORING & CRIBBING
- STRUCTURAL REPAIR OF CONCRETE, DEPTH ≤ 5" (SPECIAL)  
SEE SPECIAL PROVISIONS
- ▨ STRUCTURAL REPAIR OF CONCRETE, DEPTH ≤ 5"

**FOR QUANTITIES SEE SHEET 6 OF 8**

SHEET 1 OF 2

ILLINOIS DEPARTMENT OF TRANSPORTATION  
**EAST PIER  
WB I-80 OVER RICHARD ST  
SN 099-0065**