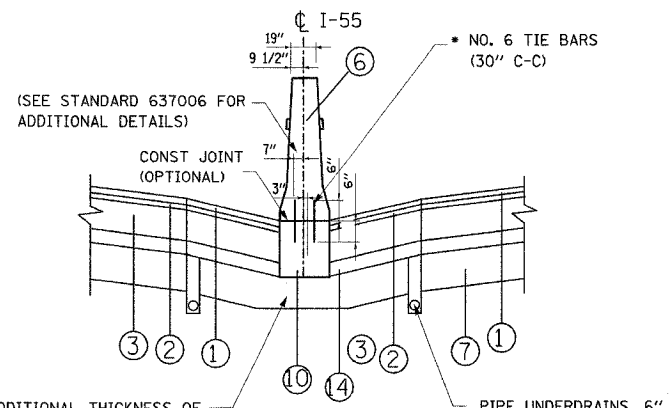
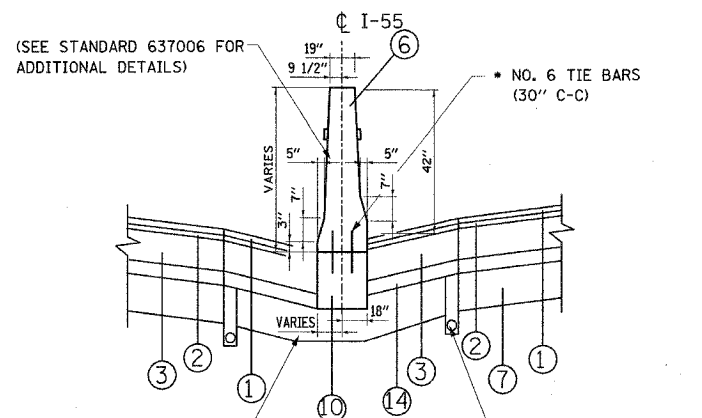


| F.A.I. RTE. | SECTION | COUNTY | TOTAL SHEETS | SHEET NO. |
|---------------------|----------------|---------------------------|--------------|-----------|
| 55 | 99 (I&2) WRS-3 | WILL | 305 | 17 |
| STA. | | TO STA. | | |
| FED. ROAD DIST. NO. | | ILLINOIS FED. AID PROJECT | | |
| | | TYP 07 OF 11 | | |



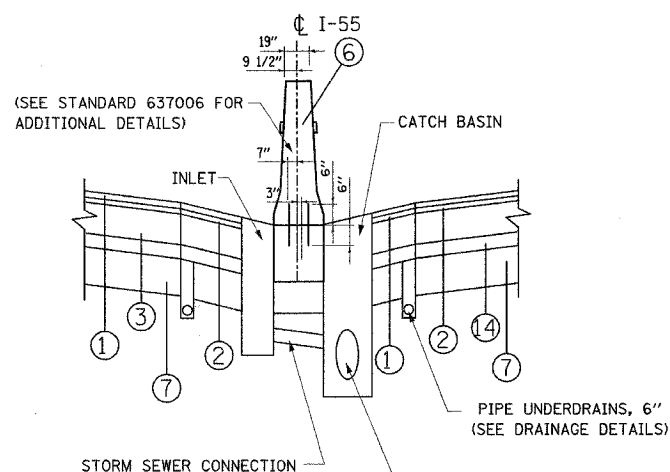
COST OF ADDITIONAL THICKNESS OF AGG SUBGRADE SHALL BE INCLUDED IN CONTRACT UNIT COST FOR "AGGREGATE SUBGRADE, 12"

MEDIAN DETAIL A
TYPICAL CONCRETE BARRIER

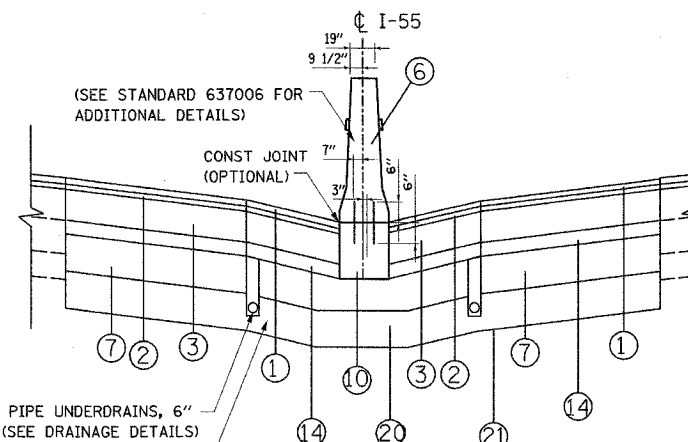


COST OF ADDITIONAL THICKNESS OF AGG SUBGRADE SHALL BE INCLUDED IN CONTRACT UNIT COST FOR "AGGREGATE SUBGRADE, 12"

MEDIAN DETAIL B
TYPICAL CONCRETE BARRIER (VARIABLE HEIGHT)



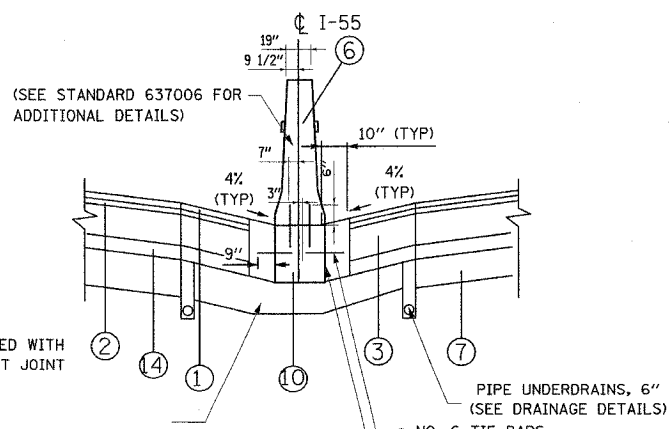
MEDIAN DETAIL C
TYPICAL CONCRETE BARRIER W/ INLET AND CATCH BASIN



COST OF ADDITIONAL THICKNESS OF AGG SUBGRADE SHALL BE INCLUDED IN CONTRACT UNIT COST FOR "AGGREGATE SUBGRADE, 12"

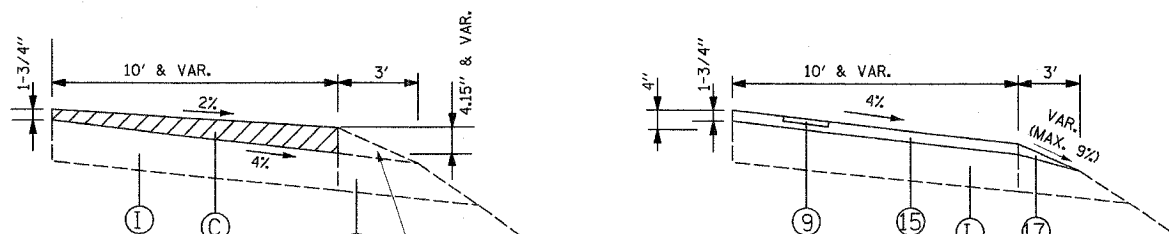
MEDIAN DETAIL D
MEDIAN DETAIL WITH PROPOSED UNDERCUT
STA. 744+00 TO STA. 746+50
STA. 798+00 TO STA. 803+75
STA. 821+25 TO STA. 832+00
STA. 839+50 TO STA. 848+00
STA. 854+75 TO STA. 857+50
STA. 894+50 TO STA. 895+75

"POROUS GRANULAR EMBANKMENT, SUBGRADE" AND "GEOTECHNICAL FABRIC FOR GROUND STABILIZATION" ARE TO BE CONSTRUCTED BENEATH THE AGGREGATE SUBGRADE WHERE COHESIVE SOILS WITH HIGH MOISTURE CONTENTS EXIST. THE LIMITS LISTED DELINEATES THE LOCATIONS WHERE SUCH SOILS ARE ANTICIPATED. THE ACTUAL LOCATIONS SHALL BE DETERMINED BY THE ENGINEER.



• ONLY REQUIRED WITH OPTIONAL CONST JOINT

MEDIAN DETAIL E
TYPICAL CONCRETE BARRIER W/ CONCRETE GUTTER



SHOULDER MILLING DETAIL

SHOULDER DETAIL

NOTES:

- SUB-BASE GRANULAR MATERIAL, TYPE B SHALL BE CONSTRUCTED IN ACCORDANCE WITH ARTICLES 311.02, 311.03, AND 311.05 OF THE STANDARD SPECIFICATIONS. HIS WORK WILL BE MEASURED AND PAID FOR AS TRENCH BACKFILL IN ACCORDANCE WITH ARTICLES 208.03 AND 208.04 OF THE STANDARD SPECIFICATIONS.

EXISTING

- (A) BITUMINOUS CONCRETE SHOULDER REMOVAL
- (B) HOT-MIX ASPHALT SURFACE REMOVAL, 3 1/2"
- (C) HOT-MIX ASPHALT SURFACE REMOVAL, VARIABLE DEPTH
- (D) POLYMERIZED BITUMINOUS CONCRETE PAVEMENT
- (E) PAVEMENT REMOVAL
- (F) P.C.C. PAVEMENT
- (G) SUB-BASE GRANULAR MATERIAL
- (H) HOT-MIX ASPHALT BASE COURSE
- (I) BITUMINOUS CONCRETE SHOULDER
- (J) AGGREGATE SHOULDER
- (K) GUARDRAIL
- (L) AGGREGATE SUBGRADE
- (M) HOT-MIX ASPHALT BINDER COURSE
- (N) CONCRETE BARRIER

PROPOSED

- (1) POLYMERIZED HOT-MIX ASPHALT SURF. CSE, STONE MATRIX ASPH., N80, 1-3/4"
- (2) POLYMERIZED HOT-MIX ASPHALT BIND. CSE, STONE MATRIX ASPH., N80, 1-3/4"
- (3) HOT-MIX ASPHALT BASE COURSE, 8"
- (4) HOT-MIX ASPHALT BINDER COURSE, IL-19, N70, 8"
- (5) P.C.C. CONCRETE BASE COURSE, 10-1/2"
- (6) CONCRETE BARRIER, DOUBLE FACE, 42" HEIGHT
- (7) AGGREGATE SUBGRADE, 12"
- (8) SUB-BASE GRANULAR MATERIAL, TYPE B, 6"
- (9) SHOULDER RUMBLE STRIP
- (10) CONCRETE BARRIER BASE
- (11) LONGITUDINAL CONSTRUCTION JOINT AND NO. 25 EPOXY COATED DEFORMED TIE BARS (DRILL AND GROUT)
- (12) AGGREGATE SHOULDERS, TYPE B 8"
- (13) CLASS D PATCHES, 10" (SEE NOTE 1)
- (14) HOT-MIX ASPHALT BASE COURSE, 2-1/2"
- (15) HOT-MIX ASPHALT SURFACE COURSE, MIX "D", N70, 1-3/4"
- (16) HOT-MIX ASPHALT SURFACE COURSE, MIX "D", N70, 1-1/2"
- (17) AGGREGATE SHOULDERS, TYPE B (SPECIAL)
- (18) STRIP REFLECTIVE CRACK CONTROL TREATMENT
- (19) SAWED LONGITUDINAL JOINT NO. 25 EPOXY COATED DEFORMED TIE BARS
- (20) POROUS GRANULAR EMBANKMENT, SUBGRADE 12"
- (21) GEOTECHNICAL FABRIC FOR GROUND STABILIZATION

| REVISIONS | |
|-----------|------|
| NAME | DATE |
| | |
| | |
| | |
| | |
| | |
| | |
| | |
| | |
| | |

ILLINOIS DEPARTMENT OF TRANSPORTATION
FAI ROUTE 55
143RD STREET TO WEBER ROAD

TYPICAL SECTIONS

SCALE: NONE
DATE: 02-23-07

DRAWN BY: DM
CHECKED BY: DVS



FINAL