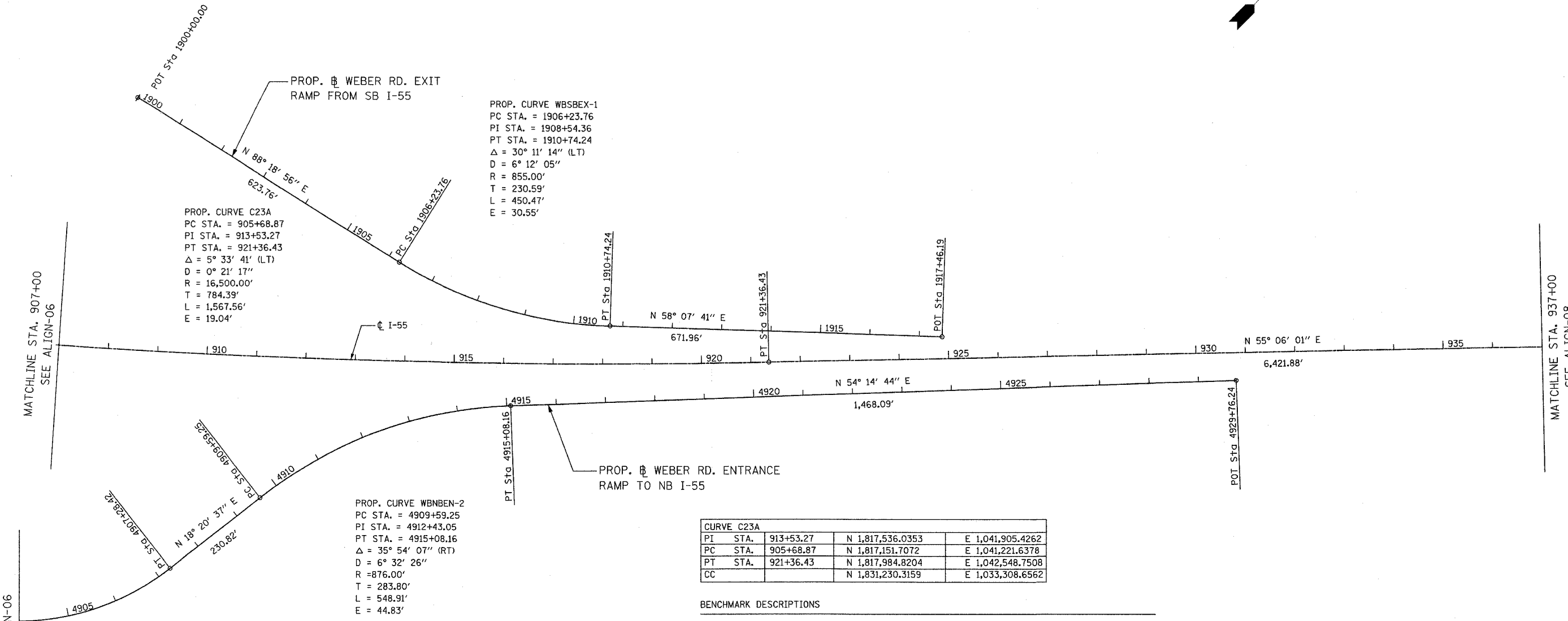
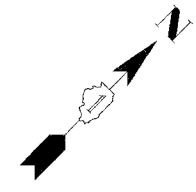


F.A.I. RTE.	SECTION	COUNTY	TOTAL SHEETS	SHEET NO.
55	99 (1&2) WRS-3	WILL	305	32
STA. 907+00		TO STA. 937+00		
FED. ROAD DIST. NO.		ILLINOIS	FED. AID PROJECT	
ALIGN-07 OF 15				



PROP. CURVE C23A
 PC STA. = 905+68.87
 PI STA. = 913+53.27
 PT STA. = 921+36.43
 $\Delta = 5^\circ 33' 41''$ (LT)
 $D = 0^\circ 21' 17''$
 $R = 16,500.00'$
 $T = 784.39'$
 $L = 1,567.56'$
 $E = 19.04'$

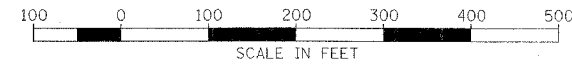
PROP. CURVE WBSBEX-1
 PC STA. = 1906+23.76
 PI STA. = 1908+54.36
 PT STA. = 1910+74.24
 $\Delta = 30^\circ 11' 14''$ (LT)
 $D = 6^\circ 12' 05''$
 $R = 855.00'$
 $T = 230.59'$
 $L = 450.47'$
 $E = 30.55'$

PROP. CURVE WBNBEN-2
 PC STA. = 4909+59.25
 PI STA. = 4912+43.05
 PT STA. = 4915+08.16
 $\Delta = 35^\circ 54' 07''$ (RT)
 $D = 6^\circ 32' 26''$
 $R = 876.00'$
 $T = 283.80'$
 $L = 548.91'$
 $E = 44.83'$

PROP. CURVE WBNBEN-1
 PC STA. = 4903+64.94
 PI STA. = 4905+55.13
 PT STA. = 4907+28.42
 $\Delta = 41^\circ 39' 08''$ (LT)
 $D = 11^\circ 27' 33''$
 $R = 500.00'$
 $T = 190.19'$
 $L = 363.49'$
 $E = 34.95'$

CURVE C23A			
PI STA.	913+53.27	N 1,817,536.0353	E 1,041,905.4262
PC STA.	905+68.87	N 1,817,151.7072	E 1,041,221.6378
PT STA.	921+36.43	N 1,817,984.8204	E 1,042,548.7508
CC		N 1,831,230.3159	E 1,033,308.6562

BENCHMARK DESCRIPTIONS
 BENCHMARK 3289 SQUARE CUT ON S EDGE OF 2" DIAM. CONC LP BASE NEAR THE SE CORNER OF THE BURGER KING PROPERTY, ELEV. 641.56'.



REVISIONS	
NAME	DATE

ILLINOIS DEPARTMENT OF TRANSPORTATION
 FAI ROUTE 55
 143RD STREET TO WEBER ROAD
 ALIGNMENT, TIES AND
 BENCHMARKS
 SCALE: 1"=100'
 DATE: 02-23-07
 DRAWN BY ALR
 CHECKED BY RH