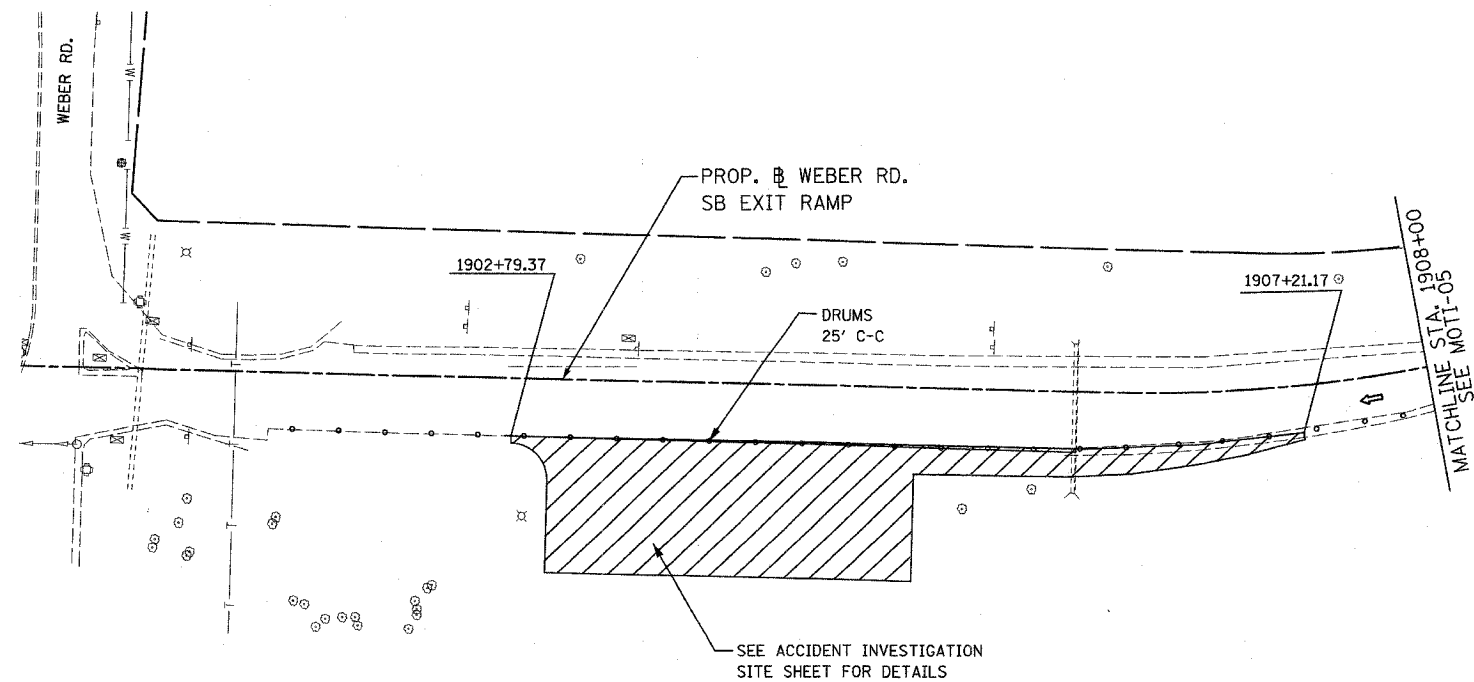


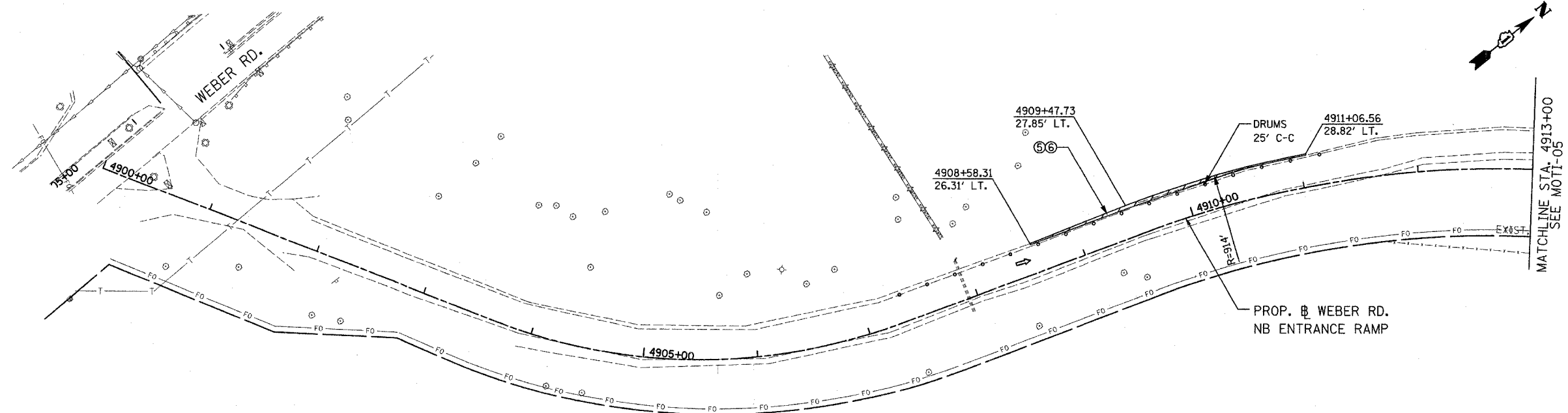
F.A.I. RTE.	SECTION	COUNTY	TOTAL SHEETS	SHEET NO.
55	99 (1&2) WRS-3	WILL	305	79
STA. 1900+00/4900+00 TO STA. 1908+00/4913+00				
FED. ROAD DIST. NO.		ILLINOIS FED. AID PROJECT		
		MOTI-06 OF 07		



LEGEND

- WORK ZONE
- DIRECTION OF TRAVEL
- TEMP CONCRETE BARRIER
- DRUMS W/ STEADY BURN LIGHTS
*See Drawing For Spacing
- BARRICADE, TYPE III WITH TWO FLASHING LIGHTS
- PVT MARKING TAPE, TYPE III 4" (WHITE)
- PVT MARKING TAPE, TYPE III 5" SKIP-DASH (WHITE-30 FT/10 FT)
- PVT MARKING TAPE, TYPE III 4" (YELLOW)
- PVT MARKING TAPE, TYPE III 4" SKIP-DASH (WHITE-6 FT/2 FT)
- HOT-MIX ASPHALT SURFACE COURSE, MIX "D", N70, 1 3/4"
- HOT-MIX ASPHALT BASE COURSE, 10 1/4"

*STATIONS AND OFFSETS ARE DESCRIBED FROM RAMP # TO WHICH CALL OUTS ORIGINATE UNLESS NOTED OTHERWISE.



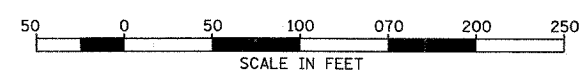
*STATIONS AND OFFSETS ARE DESCRIBED FROM RAMP # TO WHICH CALL OUTS ORIGINATE UNLESS NOTED OTHERWISE. **STAGE I**

REVISIONS	
NAME	DATE

ILLINOIS DEPARTMENT OF TRANSPORTATION
 FAI ROUTE 55
 143RD STREET TO WEBER ROAD
 SUGGESTED STAGES OF CONSTRUCTION
 AND TRAFFIC CONTROL

SCALE: 1" = 50'
 DATE: 02-23-07

DRAWN BY: TJR
 CHECKED BY: DM



FINAL