
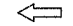


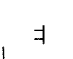
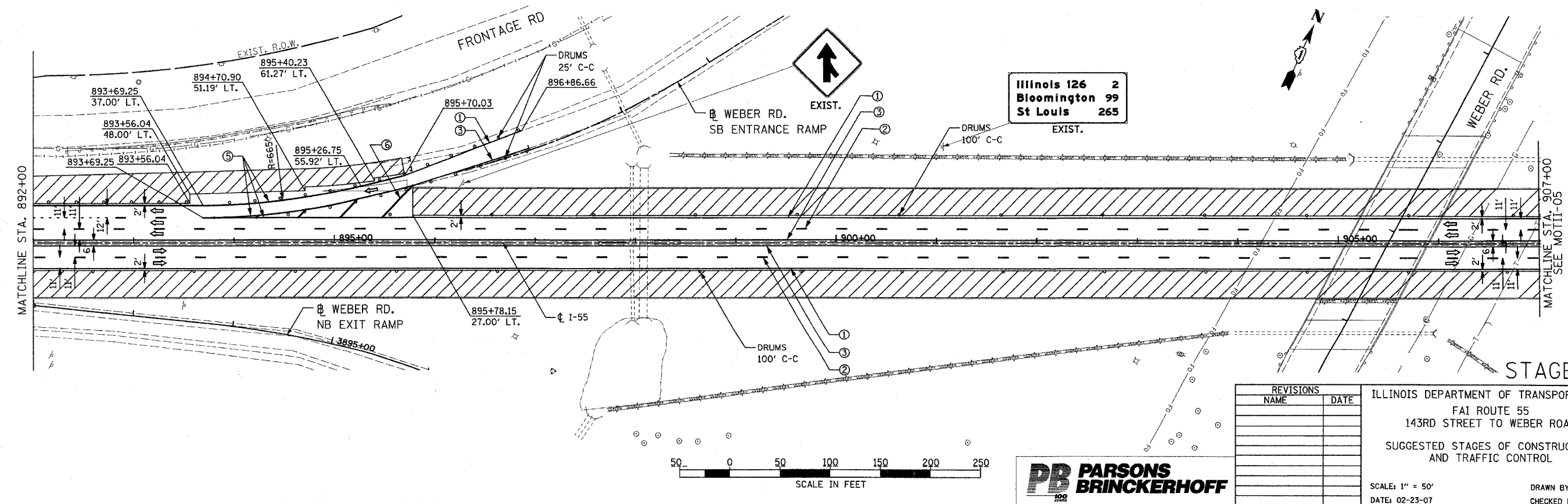
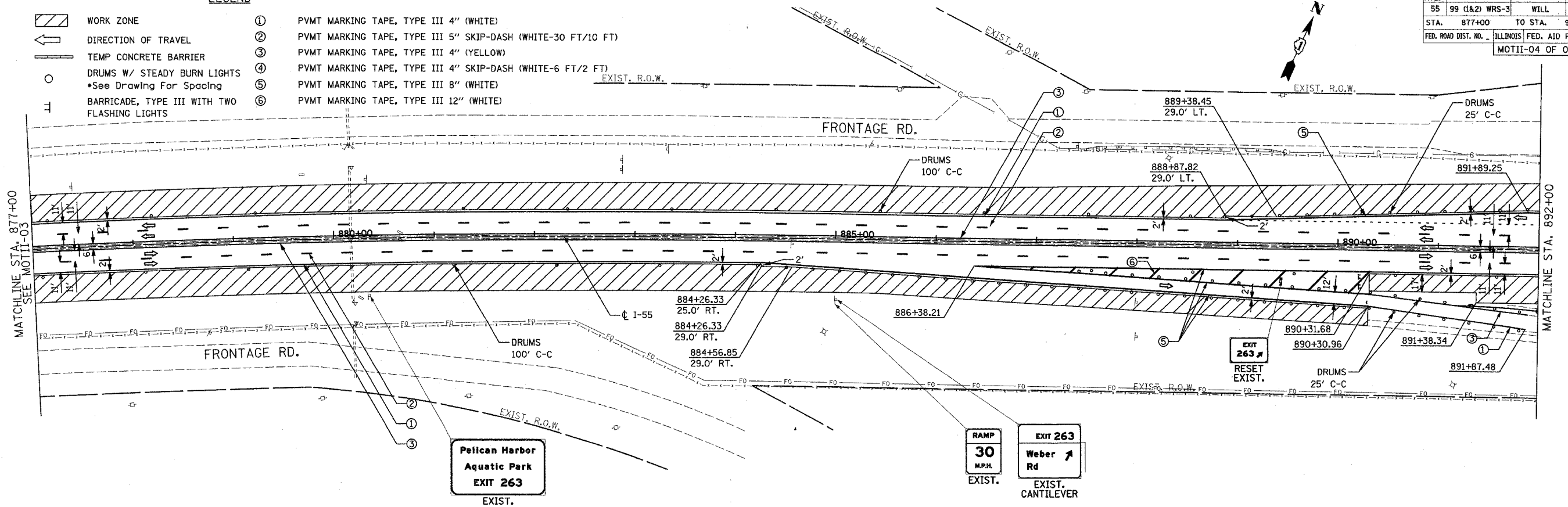


F.A.I. RTE.	SECTION	COUNTY	TOTAL SHEETS	SHEET NO.
55	99 (1&2) WRS-3	WILL	305	84
STA. 877+00		TO STA. 907+00		
FED. ROAD DIST. NO. 1 ILLINOIS FED. AID PROJECT				
MOTII-04 OF 07				

**LEGEND**

-  WORK ZONE
-  DIRECTION OF TRAVEL
-  TEMP CONCRETE BARRIER
-  DRUMS W/ STEADY BURN LIGHTS  
\*See Drawing For Spacing
-  BARRICADE, TYPE III WITH TWO FLASHING LIGHTS
- ① PVMT MARKING TAPE, TYPE III 4" (WHITE)
- ② PVMT MARKING TAPE, TYPE III 5" SKIP-DASH (WHITE-30 FT/10 FT)
- ③ PVMT MARKING TAPE, TYPE III 4" (YELLOW)
- ④ PVMT MARKING TAPE, TYPE III 4" SKIP-DASH (WHITE-6 FT/2 FT)
- ⑤ PVMT MARKING TAPE, TYPE III 8" (WHITE)
- ⑥ PVMT MARKING TAPE, TYPE III 12" (WHITE)

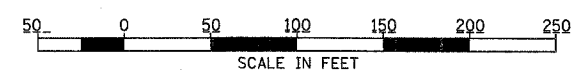


REVISIONS	
NAME	DATE

ILLINOIS DEPARTMENT OF TRANSPORTATION  
 FAI ROUTE 55  
 143RD STREET TO WEBER ROAD  
 SUGGESTED STAGES OF CONSTRUCTION  
 AND TRAFFIC CONTROL

SCALE: 1" = 50'  
 DATE: 02-23-07

DRAWN BY: TJR  
 CHECKED BY: DM



**STAGE II**

FINAL