

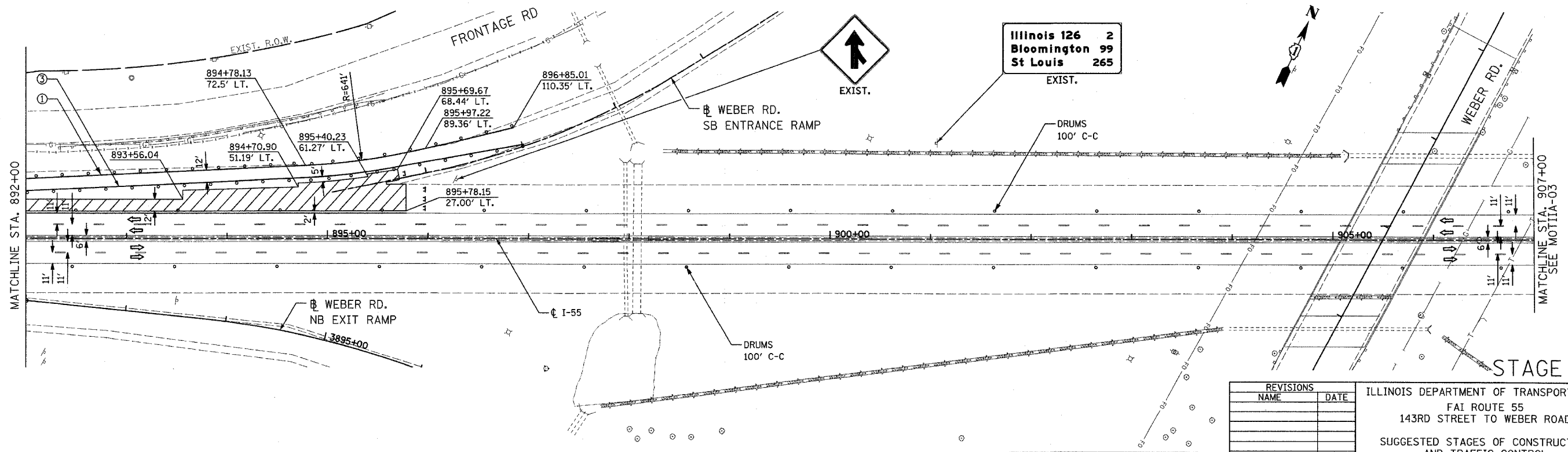
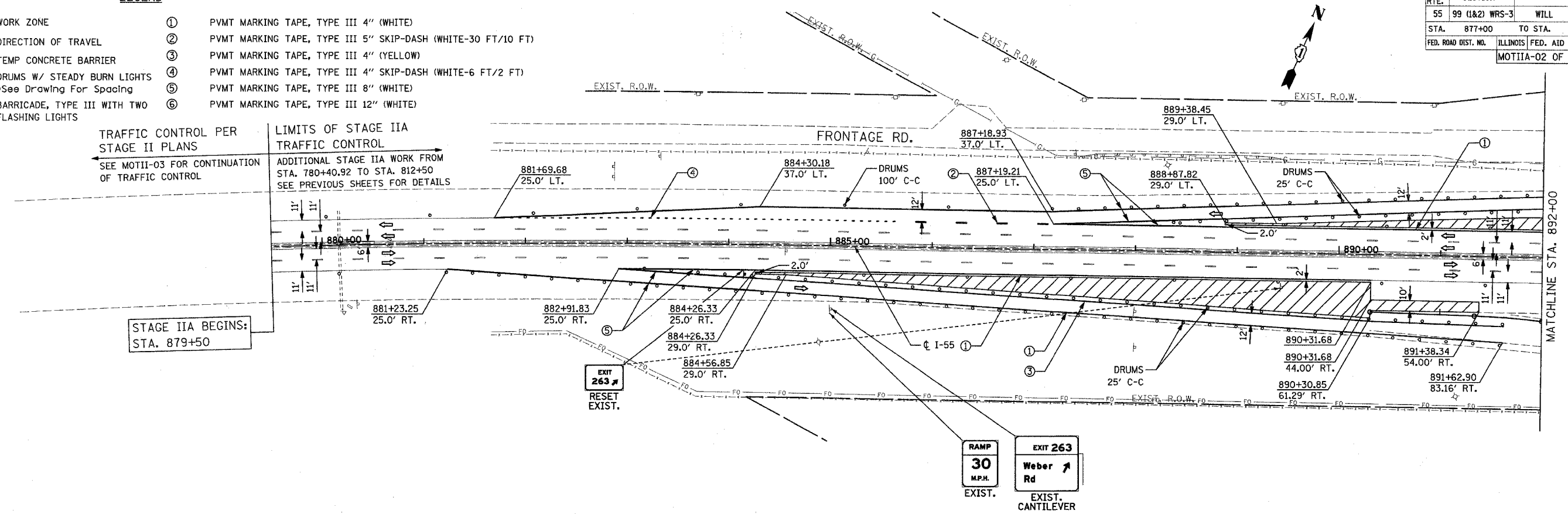
F.A.I. RTE.	SECTION	COUNTY	TOTAL SHEETS	SHEET NO.
55	99 (I&2) WRS-3	WILL	305	89
STA. 877+00		TO STA. 907+00		
FED. ROAD DIST. NO.		ILLINOIS FED. AID PROJECT		
MOTIIA-02 OF 05				

- LEGEND**
- WORK ZONE
  - DIRECTION OF TRAVEL
  - TEMP CONCRETE BARRIER
  - DRUMS W/ STEADY BURN LIGHTS  
\*See Drawing For Spacing
  - BARRICADE, TYPE III WITH TWO FLASHING LIGHTS
  - ① PVMT MARKING TAPE, TYPE III 4" (WHITE)
  - ② PVMT MARKING TAPE, TYPE III 5" SKIP-DASH (WHITE-30 FT/10 FT)
  - ③ PVMT MARKING TAPE, TYPE III 4" (YELLOW)
  - ④ PVMT MARKING TAPE, TYPE III 4" SKIP-DASH (WHITE-6 FT/2 FT)
  - ⑤ PVMT MARKING TAPE, TYPE III 8" (WHITE)
  - ⑥ PVMT MARKING TAPE, TYPE III 12" (WHITE)

**TRAFFIC CONTROL PER STAGE II PLANS**  
SEE MOTII-03 FOR CONTINUATION OF TRAFFIC CONTROL

**LIMITS OF STAGE IIA TRAFFIC CONTROL**  
ADDITIONAL STAGE IIA WORK FROM STA. 780+40.92 TO STA. 812+50  
SEE PREVIOUS SHEETS FOR DETAILS

STAGE IIA BEGINS: STA. 879+50



REVISIONS	
NAME	DATE

ILLINOIS DEPARTMENT OF TRANSPORTATION  
FAI ROUTE 55  
143RD STREET TO WEBER ROAD  
SUGGESTED STAGES OF CONSTRUCTION AND TRAFFIC CONTROL

SCALE: 1" = 50'  
DATE: 02-23-07

DRAWN BY: TJR  
CHECKED BY: DM

