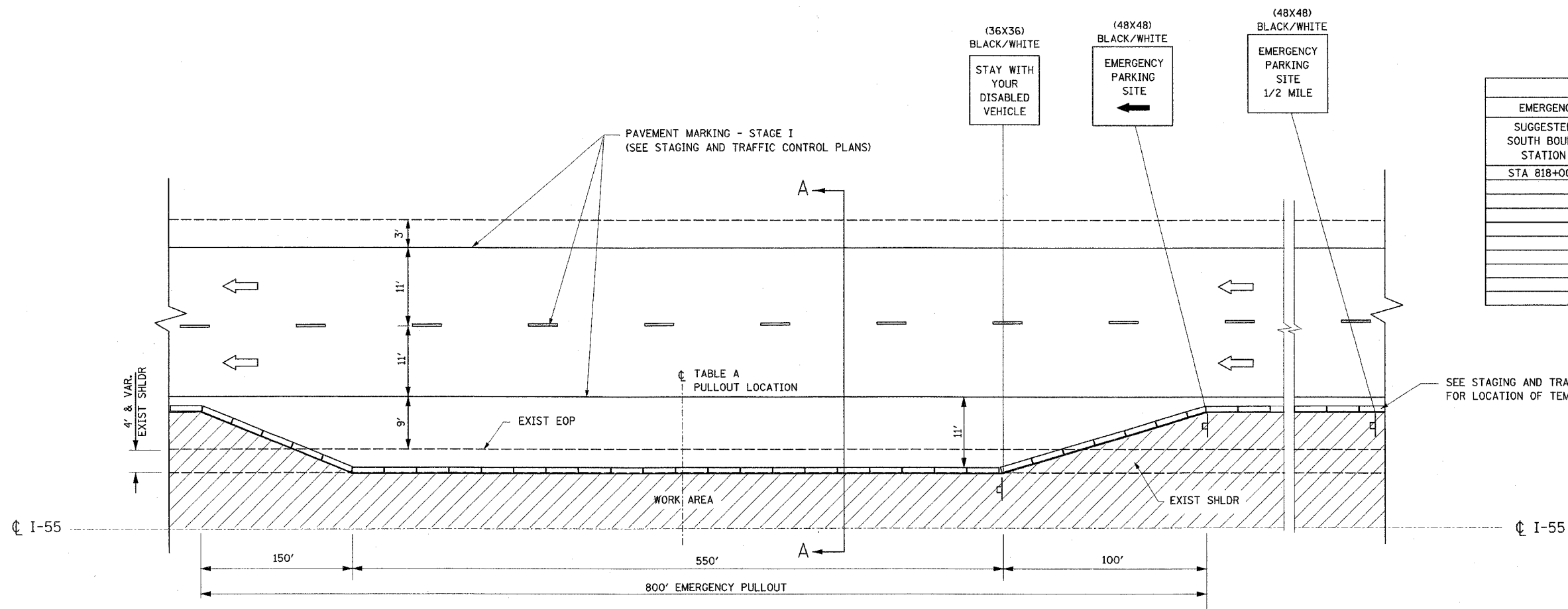


F.A.I. RTE.	SECTION	COUNTY	TOTAL SHEETS	SHEET NO.
55	99 (1&2) WRS-3	WILL	305	92
STA.	TO STA.			
FED. ROAD DIST. NO.	ILLINOIS	FED. AID PROJECT		



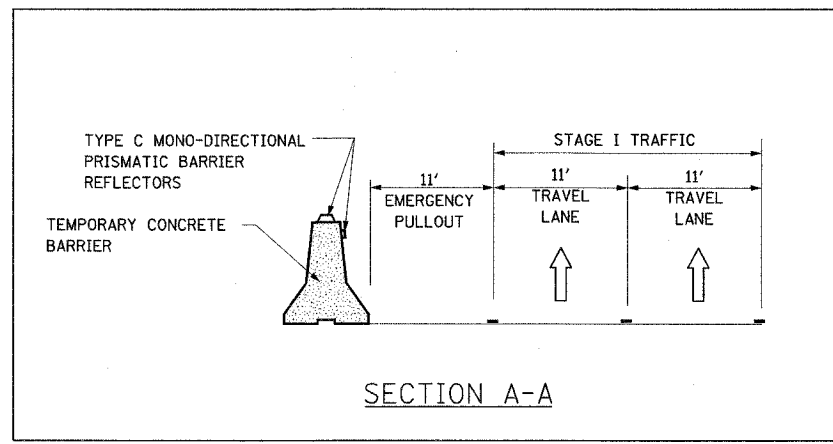
EMERGENCY PULLOUT LOCATIONS	
SUGGESTED SOUTH BOUND STATION	SUGGESTED NORTH BOUND STATION
STA 818+00	STA 833+00

EMERGENCY PULL OUT
HALF ROADWAY PLAN
STAGE I

NOTES:

- EMERGENCY PULLOUTS INSTALLED DURING STAGE I CONSTRUCTION SHALL BE LOCATED AS SPECIFIED IN TABLE A. THE LOCATIONS SHALL BE APPROVED BY THE ENGINEER.
- EMERGENCY PULLOUTS SHALL BE RELOCATED TO AN ADJACENT LOCATION, APPROVED BY THE ENGINEER, TO COMPLETE STAGE I WORK. THE RELOCATION OF THE TEMPORARY CONCRETE BARRIER WILL BE PAID AT THE CONTRACT UNIT PRICE FOR "RELOCATE TEMPORARY BARRIER".
- ALL EMERGENCY PULLOUTS SIGNS WILL BE PAID FOR AT THE CONTRACT UNIT PRICE FOR "TEMPORARY INFORMATION SIGNING"
- THE COST OF THE TRAFFIC CONTROL REQUIRED FOR THE INSTALLATION AND RELOCATION OF EMERGENCY PULLOUTS AND THE COST OF RELOCATION OF THE TEMPORARY INFORMATION SIGNING FOR EMERGENCY PULLOUTS WILL NOT BE PAID FOR SEPARATELY AND SHALL BE INCLUDED IN THE CONTRACT UNIT PRICE FOR "TRAFFIC CONTROL AND PROTECTION (EXPRESSWAYS)".

- LEGEND:
- DIRECTION OF TRAFFIC
 - WORK AREA
 - SIGN ON SUPPORT
 - TEMPORARY CONCRETE BARRIER



REVISIONS	
NAME	DATE

ILLINOIS DEPARTMENT OF TRANSPORTATION
FAI ROUTE 55
143RD STREET TO WEBER ROAD
STAGING AND TRAFFIC CONTROL
DETAIL FOR
EMERGENCY PULLOUT

SCALE: NONE
DATE: 02-23-07

DRAWN BY: DM
CHECKED BY: DVS