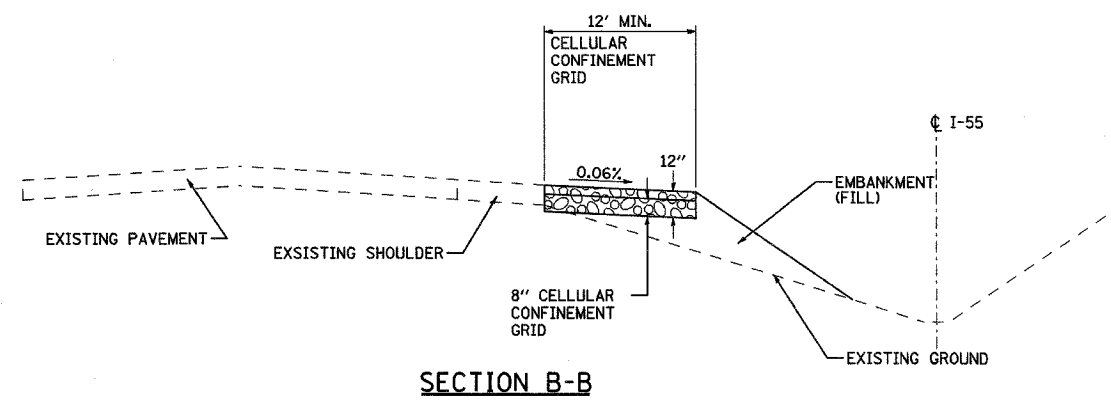
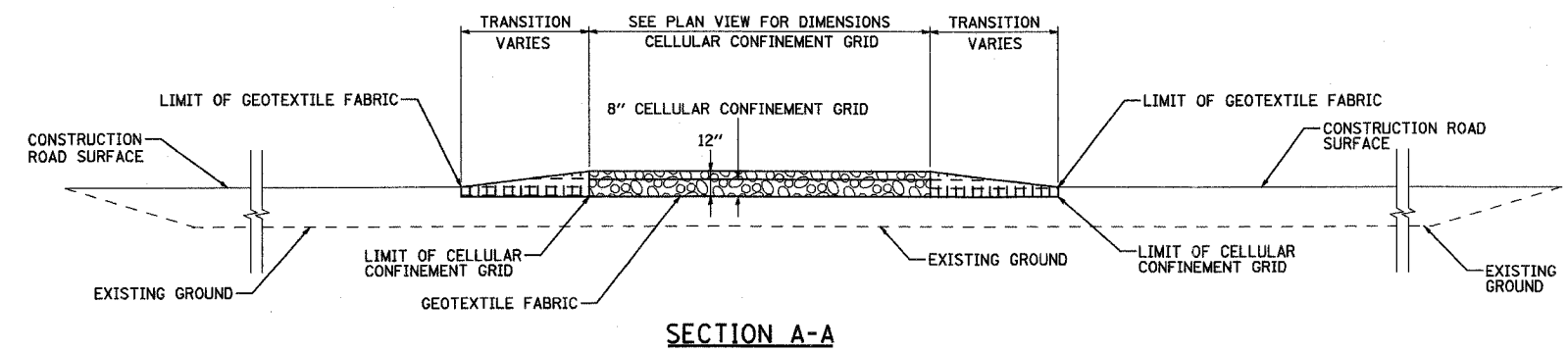
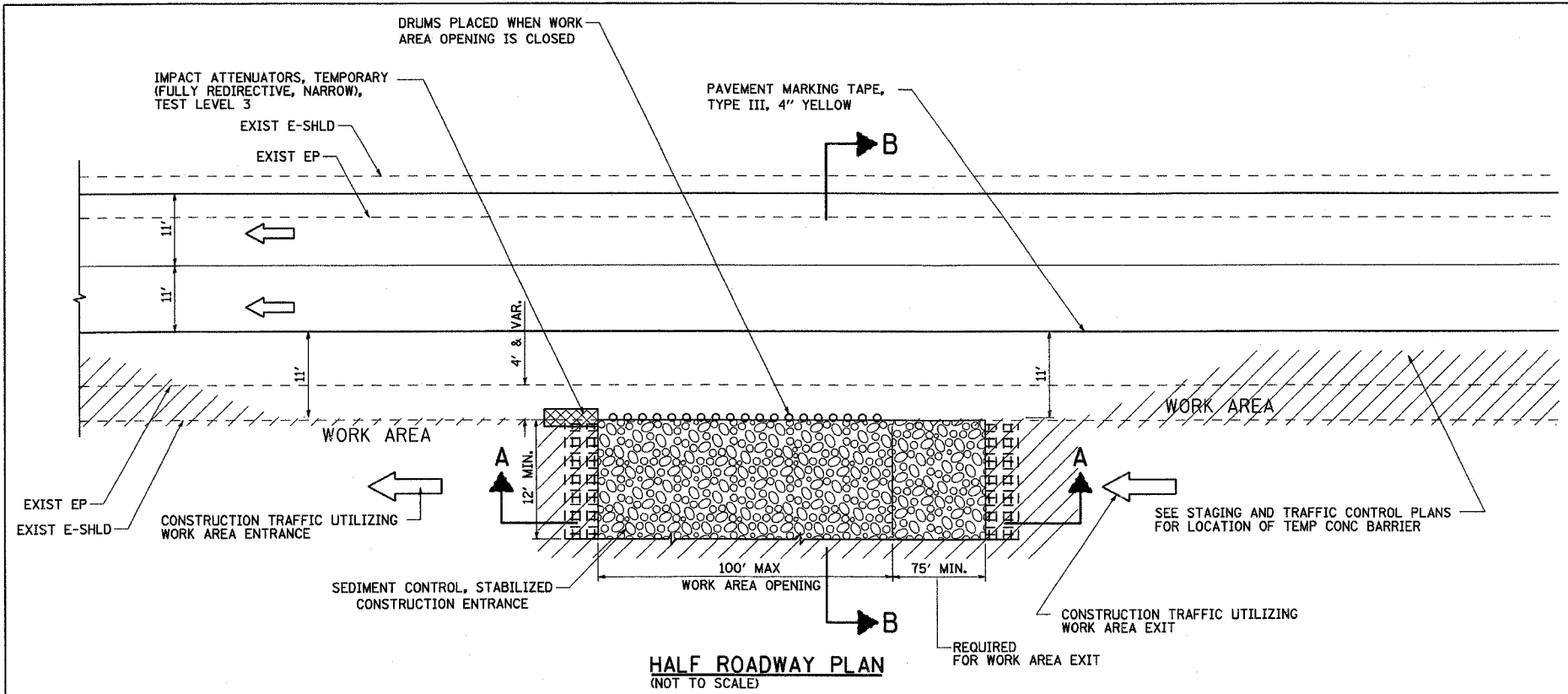


CONTRACT NO. 60B47				
F.A.P. RTE.	SECTION	COUNTY	TOTAL SHEETS	SHEET NO.
55	99 (I&2) WRS-3	WILL	305	103
STA.		TO STA.		
FED. ROAD DIST. NO.		ILLINOIS FED. AID PROJECT		
EC-05 OF 07				



- LEGEND:**
- COURSE AGGREGATE CA-3
 - SEDIMENT CONTROL, STABILIZED CONSTRUCTION ENTRANCE
 - DIRECTION OF TRAFFIC
 - WORK AREA
 - IMPACT ATTENUATOR

- NOTES:**
1. THE EXISTING BITUMINOUS SHOULDER SHALL REMAIN IN THE PLACE UNTIL THE STABILIZED CONSTRUCTION ENTRANCE IS REMOVED.
 2. EXISTING DITCH DRAINAGE TO BE MAINTAINED.
 3. THE COST OF ANY COURSE AGGREGATE CA-3 USED FOR TRANSITION FROM THE CONSTRUCTION ROAD TO THE STABILIZED CONSTRUCTION ENTRANCE WILL NOT BE PAID FOR SEPARATELY, BUT SHALL BE INCLUDED IN THE UNIT PRICE BID FOR "SEDIMENT CONTROL, STABILIZED CONSTRUCTION ENTRANCE".
 4. SEE STAGING AND TRAFFIC CONTROL DETAIL FOR WORK AREA DRIVEWAY ENTRANCE/EXIT.
 5. THE SEDIMENT CONTROL, STABILIZED CONSTRUCTION ENTRANCE DIMENSIONS SHALL BE APPROVED BY THE ENGINEER.

	REVISIONS		ILLINOIS DEPARTMENT OF TRANSPORTATION FAI ROUTE 55 143RD STREET TO WEBER ROAD EROSION AND SEDIMENT CONTROL DETAIL - STABILIZED CONSTRUCTION ENTRANCE
	NAME	DATE	
	SCALE: 1" = 50'		DRAWN BY: CHECKED BY:
	DATE: 02/23/2007		

FINAL