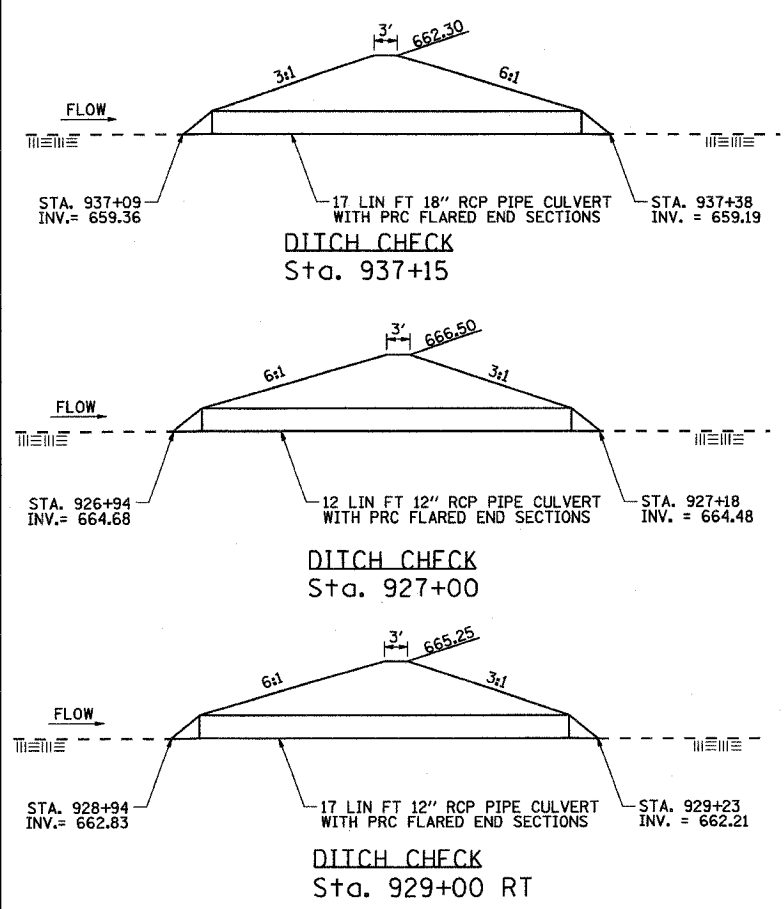


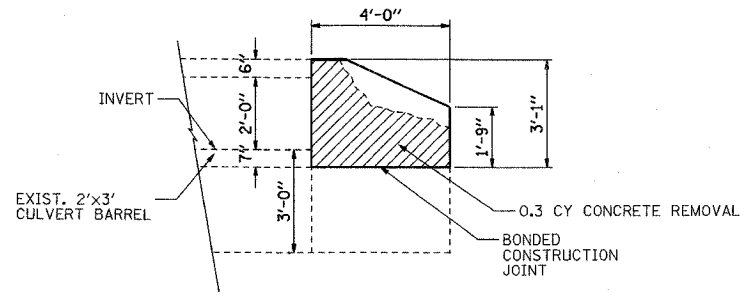
F.A.P. RTE.	SECTION	COUNTY	WILL	TOTAL SHEETS	SHEET NO.
55	99 (1&2) WRS-3			305	120
STA.		TO STA.			
FED. ROAD DIST. NO.		ILLINOIS		FED. AID PROJECT	
DDET 1 OF 5					

PERMANENT DITCH CHECK DETAILS



NOTES:
 Permanent ditch checks shall be constructed according to the above details and in accordance with the applicable portions of Sections 202, 542, and 550 of the Standard Specifications.
 Work consists of providing all equipment, materials and labor to construct the permanent ditch checks as shown including removal and disposal of unsuitable material, embankment, pipe culverts, end sections, and grading.
 This work will be paid for at the contract unit price per each for PERMANENT DITCH CHECKS.

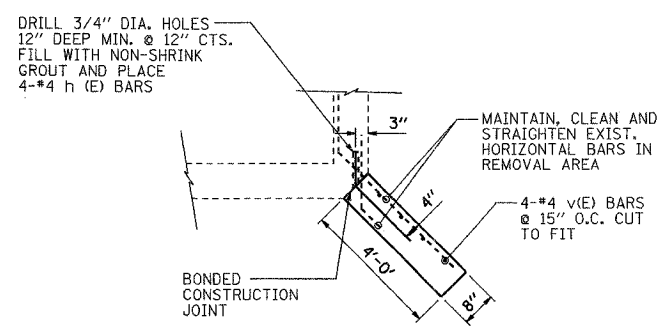
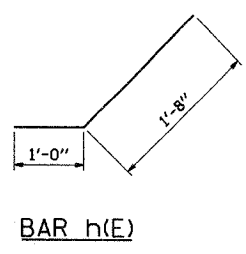
**CULVERT HEADWALL REPAIR DETAIL
 STA 809+90.**



**SOUTHWEST WINGWALL ELEVATION
 LOOKING EAST**

BILL OF MATERIAL

Bar	No.	Size	Length	Shape
h(E)	4	#4	2'-8"	
v(E)	4	#4	2'-9"	
REINFORCEMENT BARS EPOXY COATED				
CONCRETE REMOVAL				
			Cu. Yd.	0.3
CONCRETE STRUCTURES				
			Cu. Yd.	0.3
STRUCTURE EXCAVATION				
			Cu. Yd.	3

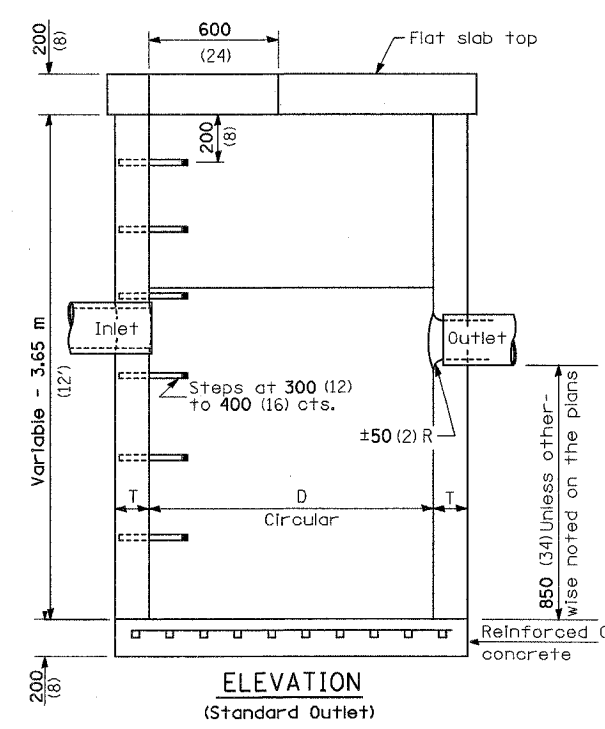


SECTION A-A

GENERAL NOTES

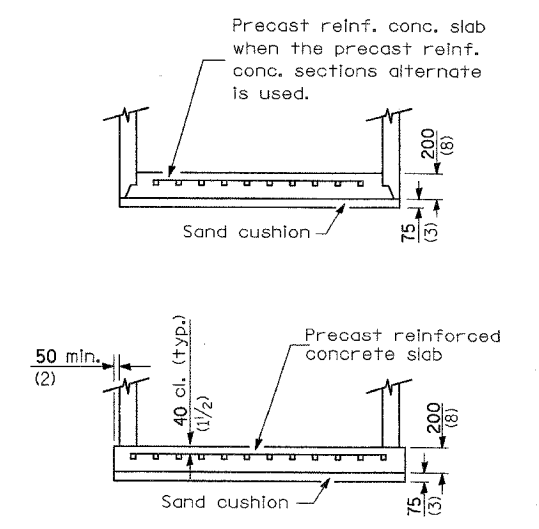
1. Reinforcement bars shall conform to the requirements of AASHTO M31 or M322, Grade 60.
2. Plan dimensions and details relative to existing structure have been taken from standard culvert details and are subject to variations. It shall be the Contractor's responsibility to verify such dimensions and details in the field and make necessary approved adjustments prior to construction or ordering of materials. Such variations shall not be cause for additional compensation for a change in the scope of the work.
3. All workmanship, labor and materials shall conform to the applicable portions of Sections 211, 250, 251, 501, 502, 503, 508 and 1024. The quantities included in the Bill of Materials are for information only. These items shall not be paid for separately, but shall be included in the item "WINGWALL REPAIR COMPLETE".

CATCH BASIN, TYPE A, 6' DIA. DETAIL

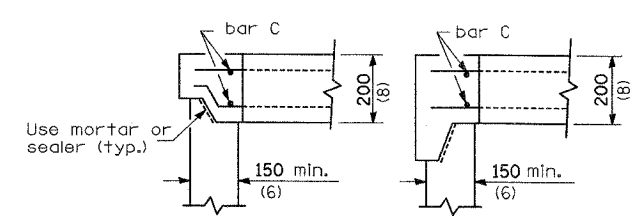


**ELEVATION
 (Standard Outlet)**

ALTERNATE MATERIALS FOR WALLS	D	T (min.)
Precast Reinforced Concrete Section	1.8 m (6'-0")	150 (6)
Cast-in-place Concrete	1.8 m (6'-0")	150 (6)



ALTERNATE BOTTOM SLABS



ALTERNATE JOINT CONFIGURATIONS

GENERAL NOTES

See Standard 602601 for precast reinforced concrete flat slab top.
 Lifting devices shall be approved by the Engineer.
 Bottom slabs shall be reinforced with a minimum of 975 mm²/m (0.46 sq. in./ft.) in both directions.
 See Standard 602701 for details of steps.
 All dimensions are in millimeters (inches) unless otherwise shown.



REVISIONS	
NAME	DATE

ILLINOIS DEPARTMENT OF TRANSPORTATION
 FAI ROUTE 55
 143RD STREET TO WEBER ROAD
 DRAINAGE DETAILS
 DITCH CHECK DETAILS,
 WINGWALL REPAIR DETAIL,
 & CATCH BASIN, TYPE A, 6' DIA.
 SCALE: DATE: 02-23-07 DRAWN BY JRM CHECKED BY TEH

FINAL