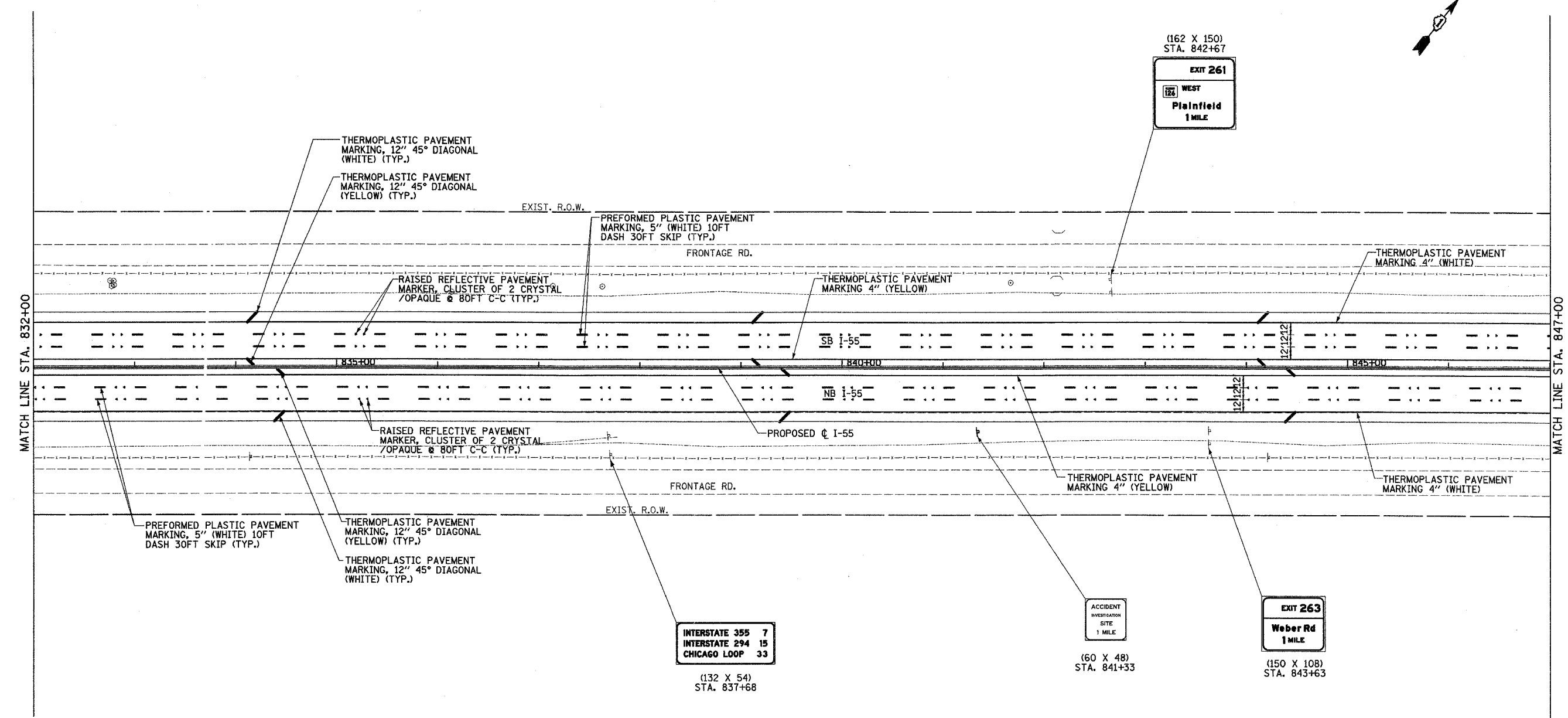
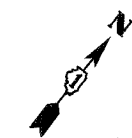


F.A.P. RTE.	SECTION	COUNTY	TOTAL SHEETS	SHEET NO.
55	100 (I&2) I-9	WILL	305	136
STA. 832+00	TO STA. 847+00			
FED. ROAD DIST. NO.		ILLINOIS	FED. AID PROJECT	
PVMRK - 4 OF 30				



DAVID MASON & ASSOCIATES
 Civil Engineering
 Structural Engineering
 Surveying
 449 E. Illinois, Suite 640
 Chicago, IL 60611
 (312) 942-9600

PB PARSONS BRINCKERHOFF
 1992

REVISIONS	
NAME	DATE

ILLINOIS DEPARTMENT OF TRANSPORTATION
 F.A.I. I-55
 143rd STREET TO WEBER ROAD

PAVEMENT MARKING
 AND SIGNING PLANS

SCALE: 1" = 50'
 DATE: FEBRUARY 23, 2007

DRAWN BY: JPS
 CHECKED BY: SE