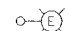
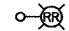
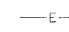

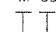




F.A.I. RTE.	SECTION	COUNTY	TOTAL SHEETS	SHEET NO.
55	99 (1&2) WRS-3	WILL	305	171
STA. 937+00		TO STA. 952+00		
FED. ROAD DIST. NO. 1		ILLINOIS FED. AID PROJECT		
L-4 OF 13				

LEGEND

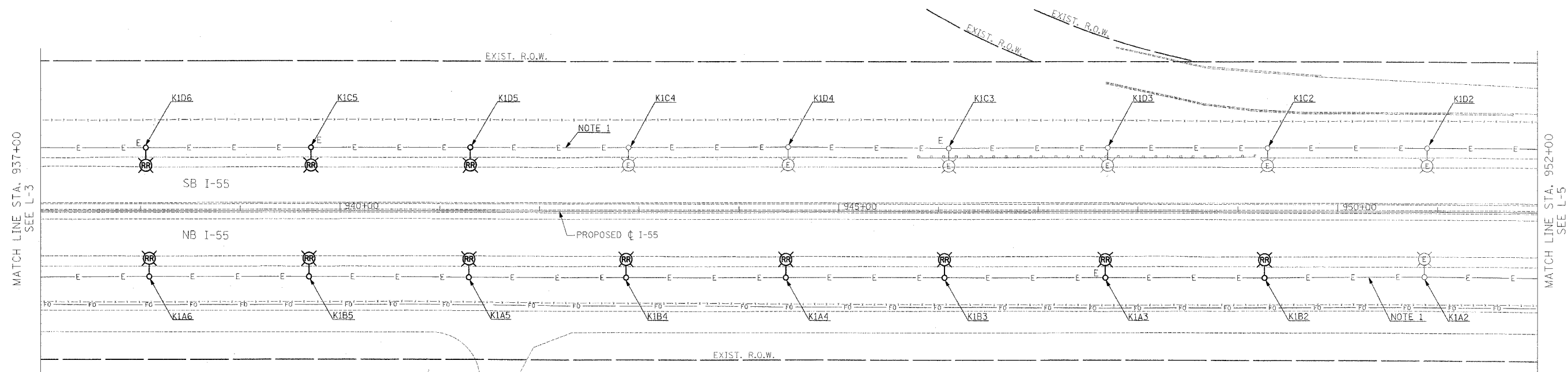
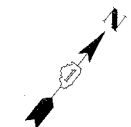
-  EXISTING LIGHTING UNIT
-  EXISTING LIGHTING UNIT TO BE REMOVED AND REINSTALLED
-  EXISTING DUCT
-  IDOT FIBER OPTIC CABLE

CIRCUIT DESIGNATION SCHEME

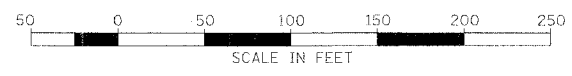
- M CD 1
-  POLE NO ON GIVEN CKT (S)
-  CIRCUIT OR CIRCUITS
-  LIGHTING CONTROLLER DESIGNATION

NOTES:

1. CONTRACTOR TO DISCONNECT AND ABANDON CABLE RUN BETWEEN POLES, ONCE NEW CABLE IS READY TO BE ENERGIZED
2. CONTRACTOR TO USE EXTREME CAUTION EXCAVATING IN AREAS OF EXISTING OR PROPOSED UNIT DUCT AND EXISTING FIBER OPTIC CABLE. CONTRACTOR SHALL PROTECT EXISTING CABLE DUCT AS NEEDED DURING EXCAVATION, TRENCHING, PLOWING, GUARDRAIL INSTALLATION, FOUNDATION INSTALLATION, AND PAVING ACTIVITIES. ONCE NEW CABLE IS READY TO BE ENERGIZED.



L-4



REVISIONS	
NAME	DATE

ILLINOIS DEPARTMENT OF TRANSPORTATION
 F.A.I. I-55
 143rd STREET TO WEBER ROAD
 EXISTING LIGHTING PLAN

SCALE: 1" = 50'
 DATE: 02-23-07

DRAWN BY: VG
 CHECKED BY: PV

SINGH 300 W. ADAMS ST.
 CHICAGO, IL 60606
 SINGH & ASSOCIATES, INC. TEL: (312) 929-0240
 CONSULTING ENGINEERS FAX: (312) 929-8449

PB PARSONS BRINCKERHOFF

FINAL