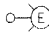
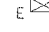
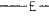
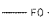
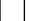
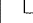



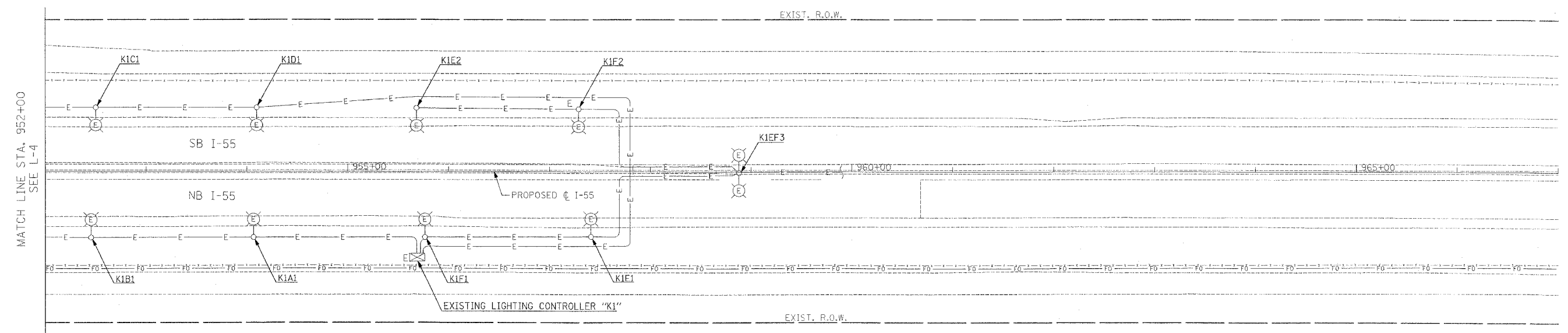
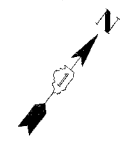
F.A.I. SHEETS	SECTION	COUNTY	TOTAL SHEETS	SHEET NO.
55	99 (1&2) WRS-3	WILL	305	172
STA. 937+00		TO STA. 952+00		
FED. ROAD DIST. NO. 1		ILLINOIS	FED. AID PROJECT	
L-5 OF 13				

**LEGEND**

 EXISTING LIGHTING UNIT  
 EXISTING LIGHTING CONTROLLER  
 EXISTING DUCT  
 IDOT FIBER OPTIC CABLE

**CIRCUIT DESIGNATION SCHEME**

M CD 1  
 POLE NO ON GIVEN CKT (S)  
 CIRCUIT OR CIRCUITS  
 LIGHTING CONTROLLER DESIGNATION



MATCH LINE STA. 952+00  
SEE L-4

L-5



REVISIONS	
NAME	DATE

ILLINOIS DEPARTMENT OF TRANSPORTATION  
 F.A.I. I-55  
 143rd STREET TO WEBER ROAD  
 EXISTING LIGHTING PLAN

SCALE: 1" = 50'  
 DATE: 02-23-07  
 DRAWN BY: VG  
 CHECKED BY: PV

**SINGH**  
 100 W. ADAMS ST.  
 CHICAGO, IL 60606  
 SINGH & ASSOCIATES, INC.  
 CONSULTING ENGINEERS  
 TEL: (312) 839-8240  
 FAX: (312) 629-8443

**PB PARSONS BRINCKERHOFF**  
 100

**FINAL**