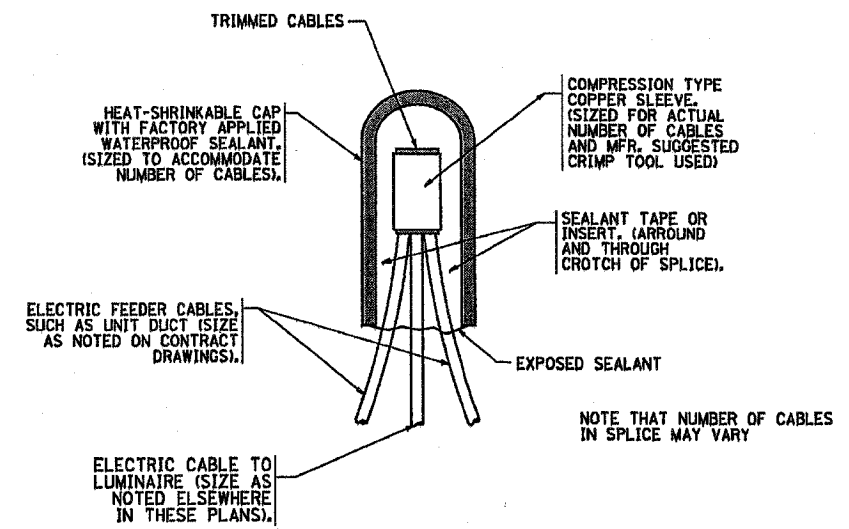
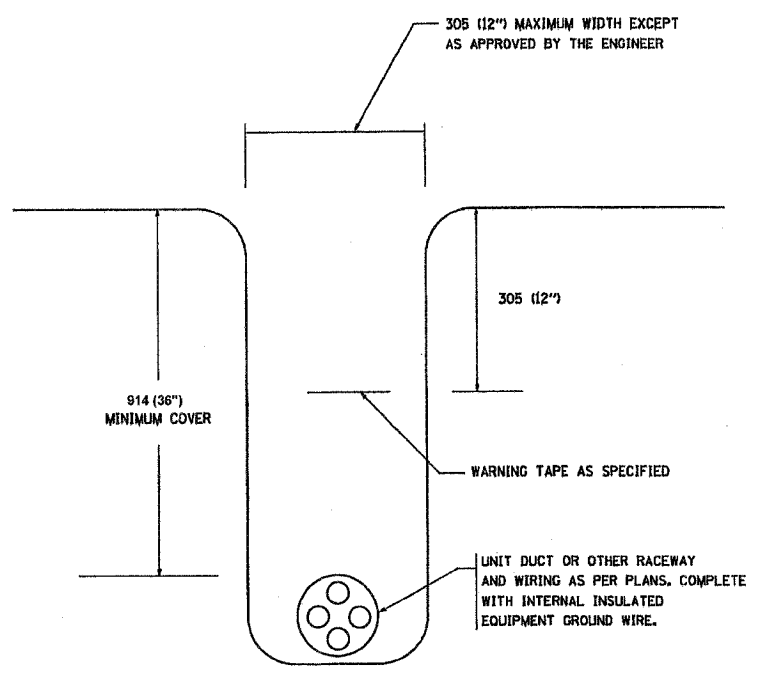


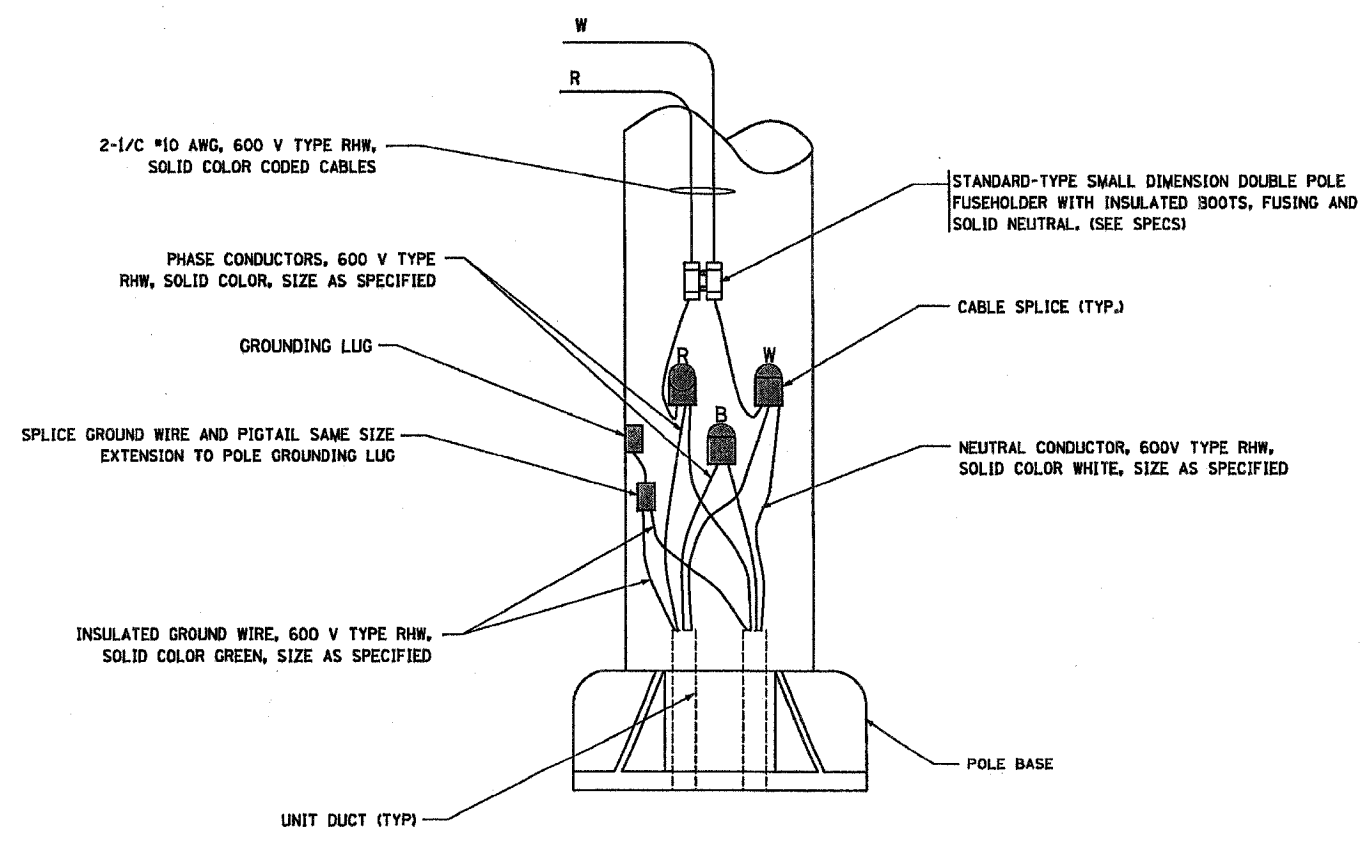
CONTRACT NO.				
F.A. RTE.	SECTION	COUNTY	TOTAL SHEETS	SHEET NO.
55	99 (I&2) WRS-3	WILL	305	180
STA.		TO STA.		
FED. ROAD DIST. NO.		ILLINOIS FED. AID PROJECT		



TYPICAL SPLICE DETAIL
N.T.S.



TYPICAL WIRING IN TRENCH DETAIL
N.T.S.



POLE WIRING DETAIL
N.T.S.

PLOT DATE = 2/15/2006
 FILE NAME = s:\projects\11072.dgn
 PLOT SCALE = 80.0000 / 1.0000
 USER NAME = eng100001

SINGH 300 W. ADAMS ST.
 CHICAGO, IL 60604
 SINGH & ASSOCIATES, INC. TEL: (312) 629-0240
 CONSULTING ENGINEERS FAX: (312) 629-8449

REVISIONS	
NAME	DATE

ILLINOIS DEPARTMENT OF TRANSPORTATION
 L-13
 MISC. ELECTRICAL DETAILS
 SCALE: VERT. HORIZ.
 DATE: 2/15/2006
 DRAWN BY
 CHECKED BY
 BE-702
 REVISION DATE: