

STATE OF ILLINOIS  
DEPARTMENT OF TRANSPORTATION

ROUTE NO.	SECTION	COUNTY	SHEET NO.	SHEET
FAI 55	**	WILL	305	186
SHEET NO. 5				
7 SHEETS				
SECTION 99 (1&2) WRS-3				
CONTRACT NO. 60B47				

Joint Size	"C" at 50°F	"D" at 50°F
2"	2"	1 1/2" Min.
2 1/2"	2 1/2"	1 3/4" Min.
4"	3"	2 1/2" Min.

**INSTALLATION NOTES**

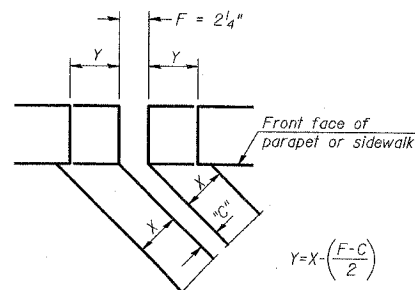
① Install continuous seal in roadway, parapet, curb, and sidewalk.

② Install anchor blocks as indicated.

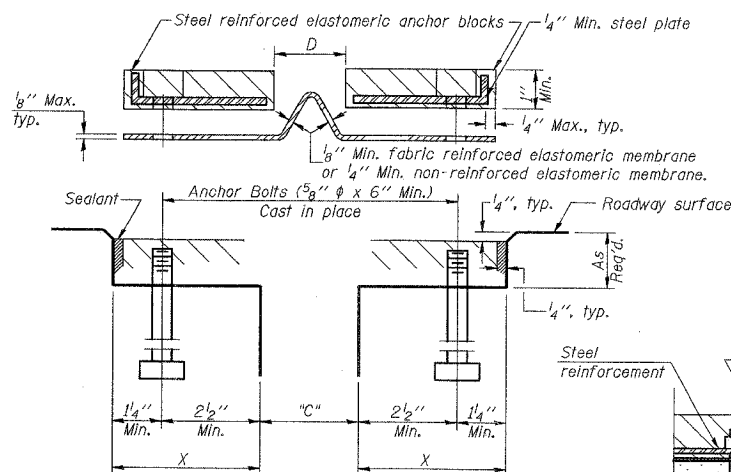
Note A:  
Maximum spacing of anchor bolts shall be 12" centers.

**SKREW LIMITATIONS**

The details of the anchor blocks and the elastomeric membrane in the parapet, as shown, are for up to 50° skews. For skews greater than 50°, the anchor blocks and the elastomeric membrane, installed according to dimension "D", might require modifications to insure a minimum clearance of 1/2" from centerline of anchor studs to edge of parapet opening. The anchor blocks and the elastomeric membrane shall also be installed to the top of the parapet with the anchor studs spaced at ±12" cts.



**FORMING BLOCKOUT SKETCH**

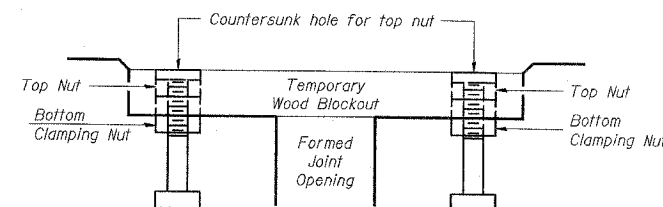


**CROSS SECTION**

**ANCHOR BLOCK WITH ASPHALT SURFACE**

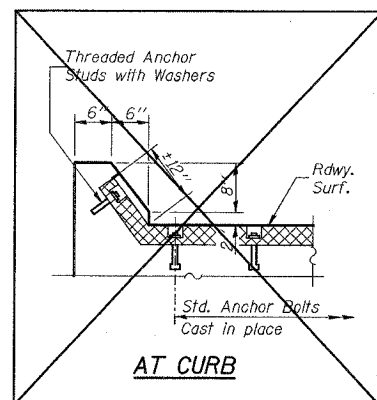
**GENERAL NOTES**

1. Continuous Seal Neoprene Expansion Joint shall consist of molded anchor blocks of elastomer and steel, field assembled over continuous lengths of elastomeric membrane.
2. The elastomeric membrane shall be pre-molded with a single or a double upward convolution that will have a "memory" to return to its molded position upon joint closure.
3. The convolution length shall be such that the extended length will not be greater than the manufactured length when the joint is fully expanded in its design range and will not protrude above the anchor blocks when the joint is fully compressed.
4. Joint openings shall be adjusted according to Article 503.10(c) of the Standard Specifications when the deck is poured at an ambient temperature other than 50° F.
5. The proposed median and existing roadway membrane shall be made continuous by an approved vulcanizing process. Lapping will not be permitted.

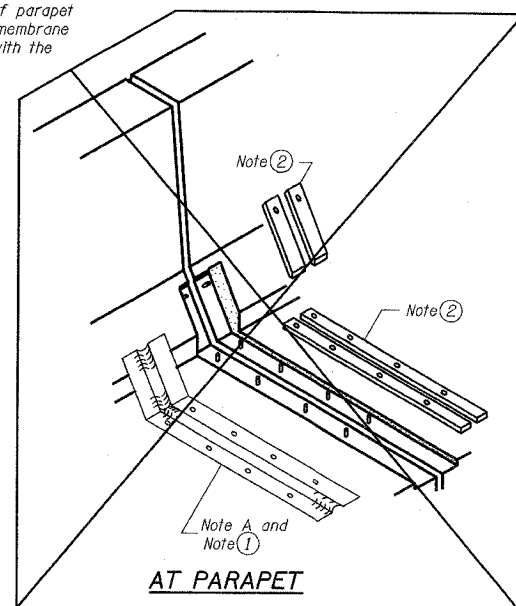


Note:  
Stud needs to be threaded lower to allow for use of clamping nut.

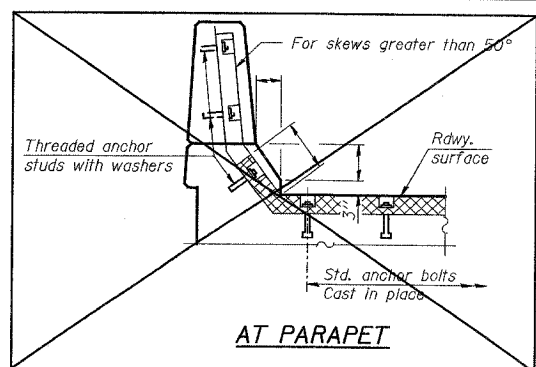
**RECOMMENDED BLOCKOUT DETAIL**



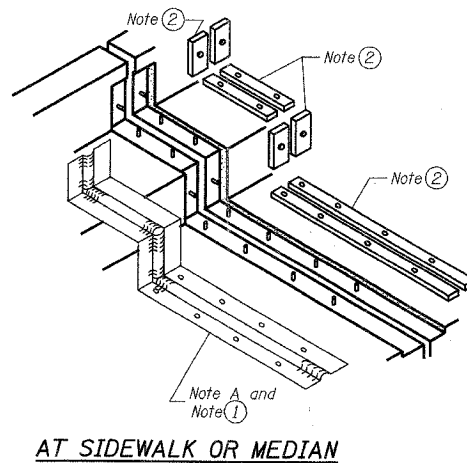
**AT CURB**



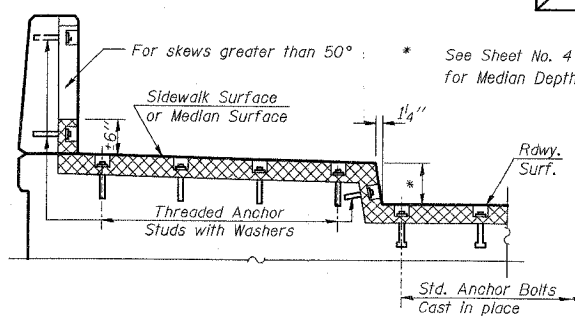
**AT PARAPET**



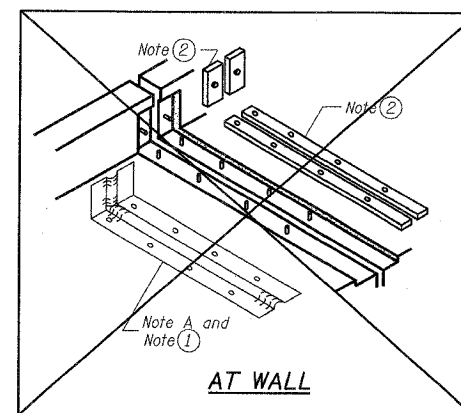
**AT PARAPET**



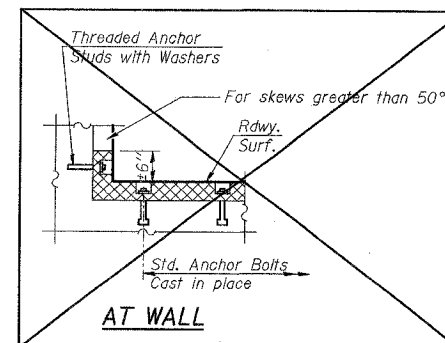
**AT SIDEWALK OR MEDIAN**



**AT SIDEWALK OR MEDIAN TYPICAL END TREATMENTS**



**AT WALL**



**AT WALL**

**BILL OF MATERIAL**

Item	Unit	Quantity
Neoprene Expansion Joint, 2"	Foot	43.0

CONTINUOUS SEAL TYPE  
NEOPRENE EXPANSION JOINTS  
WEBER ROAD OVER I-55  
SECTION 99 (1&2) WRS-3  
WILL COUNTY  
STA. 811+86.78  
STRUCTURE NO. 099-0281



DESIGNED	S.CHELBIAN
CHECKED	J.GRAINAWI
DRAWN	S.CHELBIAN
CHECKED	J.GRAINAWI

Date: 2/23/2007

EJ-CS 10-22-04