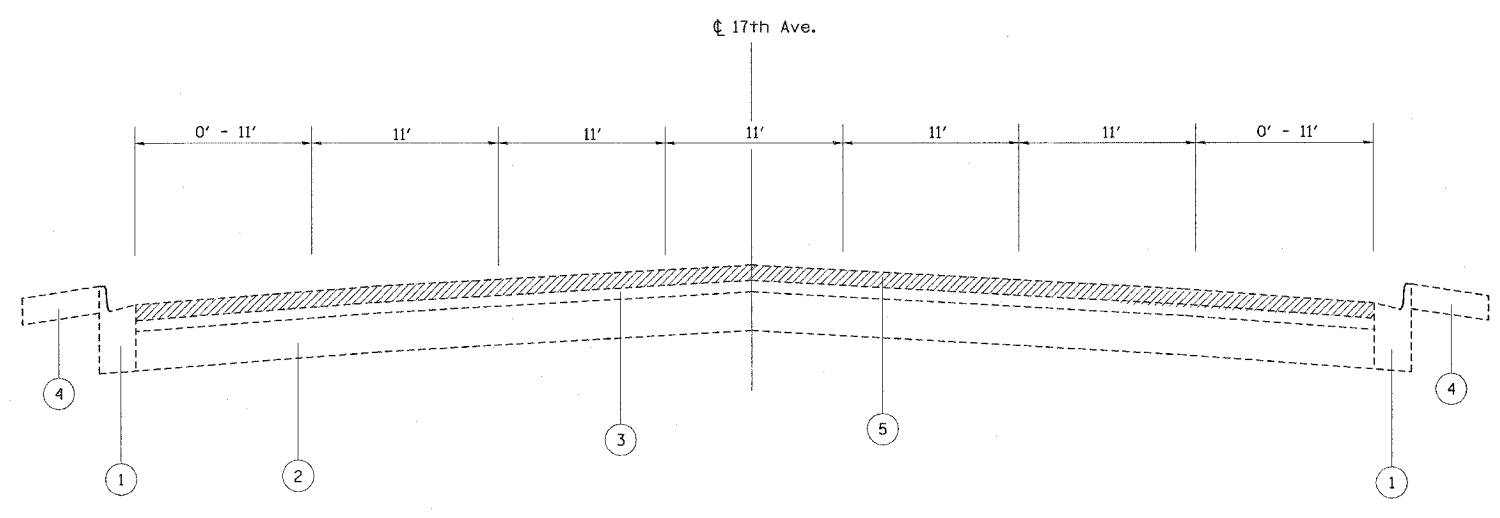
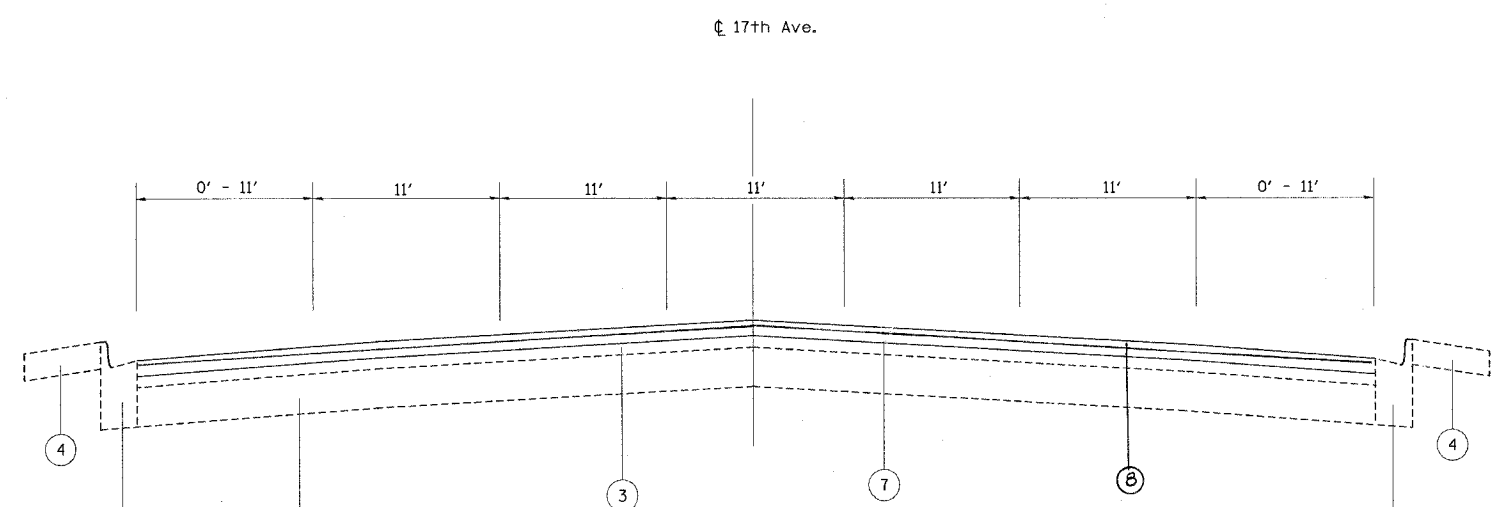


F.A.U. RTE.	SECTION	COUNTY	TOTAL SHEETS	SHEET NO.
2722	3061 (A,B,&C) RS	COOK	25	6
STA.		TO STA.		
FED. ROAD DIST. NO.	ILLINOIS	FED. AID PROJECT		



EXISTING TYPICAL SECTION
STA. 57+19 TO STA. 78+25



PROPOSED TYPICAL SECTION
STA. 57+19 TO STA. 78+25

LEGEND

- 1 EXIST. B6.12 CURB & GUTTER
- 2 EXIST. P.C.C. BASE COURSE 9" ±
- 3 EXIST. HOT MIX ASPHALT OVERLAY 4" ±
- 4 EXISTING SIDEWALK
- 5 PROPOSED HOT MIX ASPHALT SURFACE REMOVAL 2 1/2"
- 6 PROPOSED HOT MIX ASPHALT SURFACE REMOVAL, 1 1/2"
- 7 PROPOSED LEVELING BINDER (MACHINE METHOD), N70, 1
- 8 PROPOSED HOT MIX ASPHALT SURFACE COURSE, MIX "D", N70 (1 1/2")

PLOT DATE = 4/12/2007
 FILE NAME = c:\projects\2007\spring\17th_ave\design.dwg
 USER NAME = mitchellr

REVISIONS	
NAME	DATE

ILLINOIS DEPARTMENT OF TRANSPORTATION

17th Avenue
I.C. R.R. to 31st Street
EXISTING AND PROPOSED
TYPICAL SECTIONS

SCALE: VERT. _____
HORIZ. _____

DATE _____ DRAWN BY _____
CHECKED BY _____

Rev.