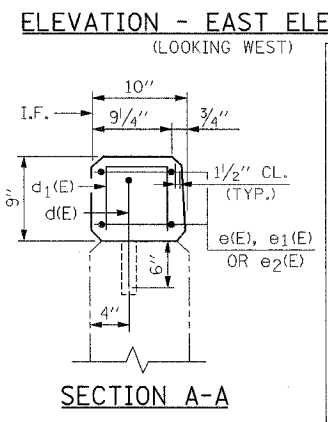


REINFORCEMENT BAR SCHEDULE				
BAR	NO.	SIZE	LENGTH	SHAPE
d(E)	676	#5	1'-7"	└
d ₁ (E)	676	#4	1'-7"	└
e(E)	32	#4	19'-4"	—
e ₁ (E)	96	#4	17'-2"	—
e ₂ (E)	16	#4	23'-2"	—

NOTES:
PERFORM T/PARAPET REPAIRS PRIOR TO CONSTRUCTING PARAPET EXTENSIONS.
CONTRACTOR SHALL PROVIDE SHOP DRAWINGS FOR NEW CONNECTIONS.

BILL OF MATERIAL		
DESCRIPTION	UNIT	QUANTITY
STRUCTURAL REPAIR OF CONCRETE (DEPTH EQUAL TO OR LESS THAN 5")	SQ. FT.	259
CONCRETE SUPERSTRUCTURE	CU. YD.	15
REINFORCEMENT BARS, EPOXY COATED	LB.	3,590
MODIFY EXISTING CONNECTION TO SIGN STRUCTURE	EACH	8



NOTE "A":
STAGE A: LEAVE IN PLACE SIGN STRUCTURE CONNECTIONS "X" TO TOP OF PARAPET AND REMOVE SIGN STRUCTURE CONNECTIONS "Y" TO TOP OF PARAPET. CONSTRUCT ALL PARAPET EXTENSIONS EXCEPT THOSE LABELLED STAGE B CONST. WHEN STAGE A CONCRETE F'c REACHES 3500PSI, INSTALL IN SAME LOCATION NEW CONNECTION FROM PARAPET TO SIGN SUPPORT AS PER STANDARD BM-1 THRU BM-3 (SPECIFICALLY AS IN DETAIL A SHT BM-3).
STAGE B: REMOVE SIGN STRUCTURE CONNECTIONS "X" TO TOP OF PARAPET. CONSTRUCT ALL PARAPET EXTENSIONS LABELLED STAGE B CONST. WHEN STAGE B CONCRETE F'c REACHES 3500PSI, INSTALL IN SAME LOCATION NEW CONNECTION FROM PARAPET TO SIGN SUPPORT AS PER STANDARD BM-1 THRU BM-3 (AS IN DETAIL A SHT BM-3). INCL. W/"MODIFY EXISTING CONNECTION TO SIGN STRUCT."

LEGEND:

STRUCTURAL REPAIR OF CONCRETE (DEPTH EQUAL TO OR LESS THAN 5")

T, F.F. = TOP & FRONT FACE

T, B.F. = TOP & BACK FACE

T = TOP

E.F. = EACH FACE

I.F. = INSIDE FACE

ILLINOIS DEPARTMENT OF TRANSPORTATION

PARAPET REPAIRS

F.A.I. RTE. 290 (I-290) OVER N.W. TOLLWAY (I-90)

F.A.I. RTE. 290 SECTION: 2006-0301

COOK COUNTY STATION 637+76.18

STRUCTURE NO. 016-0977

REVISIONS	
NAME	DATE

SCALE: DATE: MAY 10, 2007

DRAWN BY: D.L./F.M. CHECKED BY: B.N.S./J.C.N.

CHRISTIAN-ROGE & ASSOC., INC. CHICAGO ILLINOIS