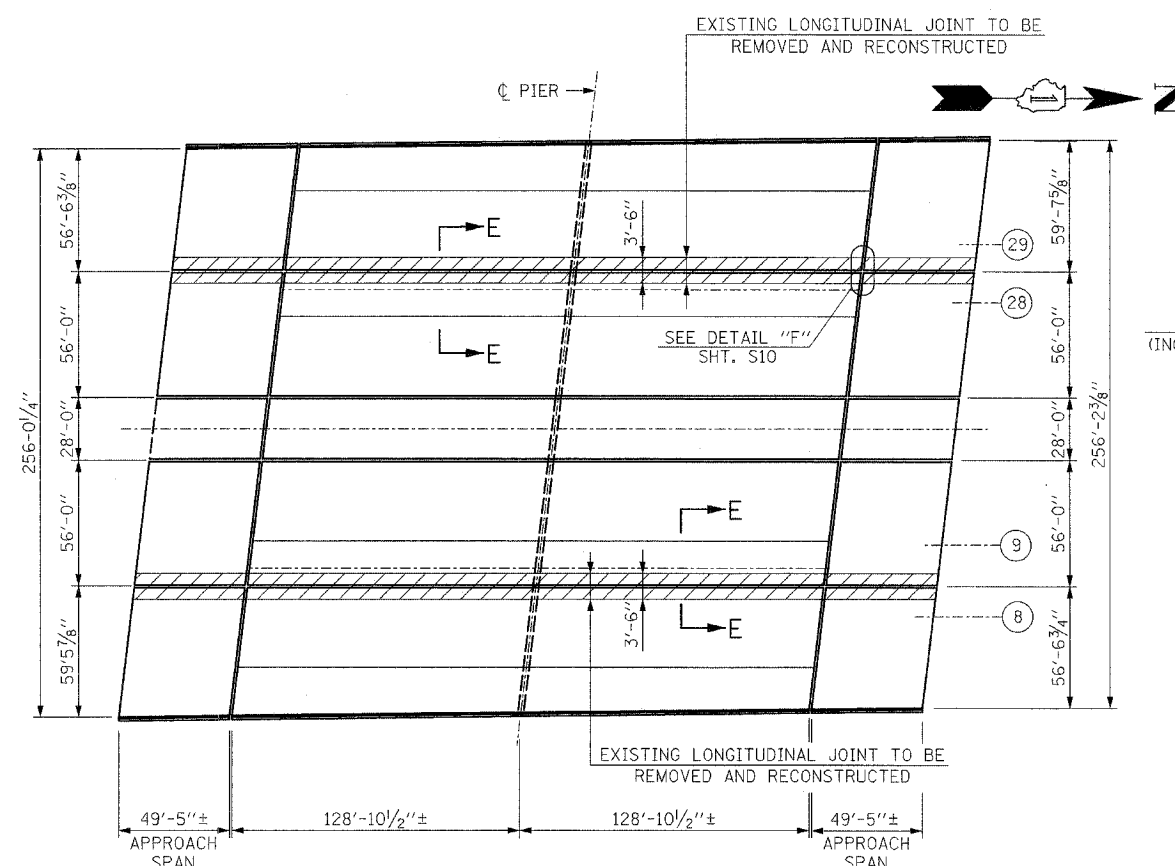
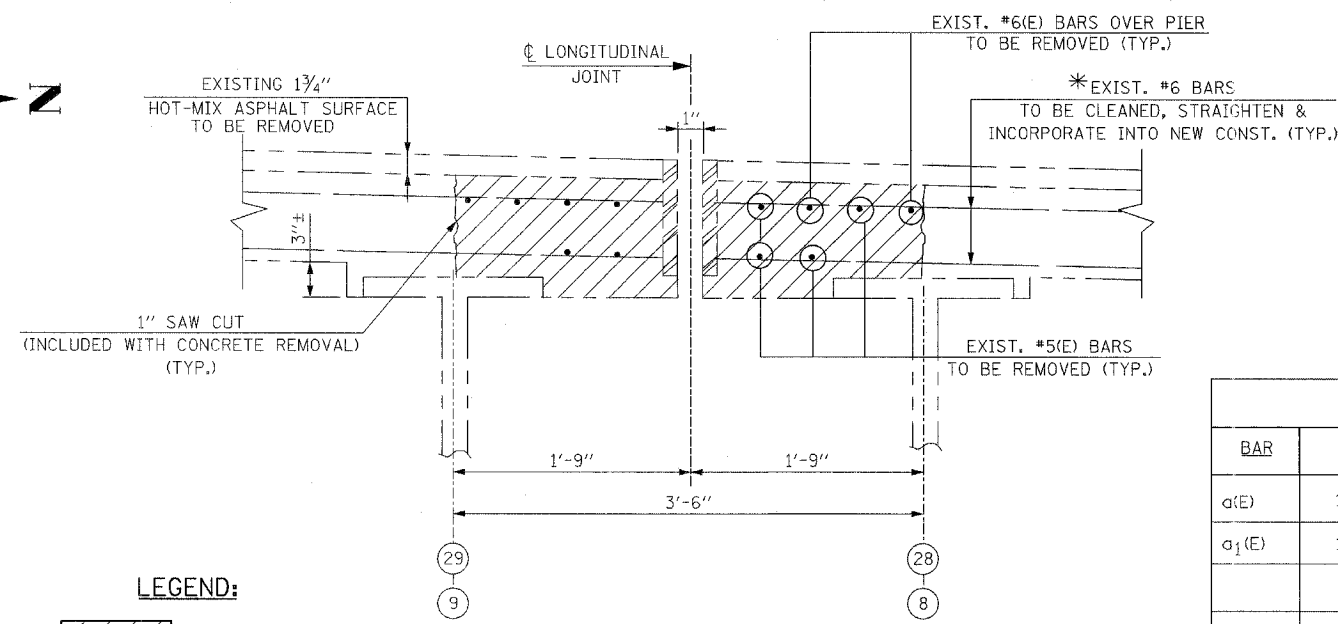


FALL ATE.	SECTION	COUNTY	TOTAL SHEETS	SHEET NO.
290	2006-0301	COOK	78	48
STA.	TO STA.		FED. AID PROJECT	

CONTRACT NO. 60B79



DECK PLAN

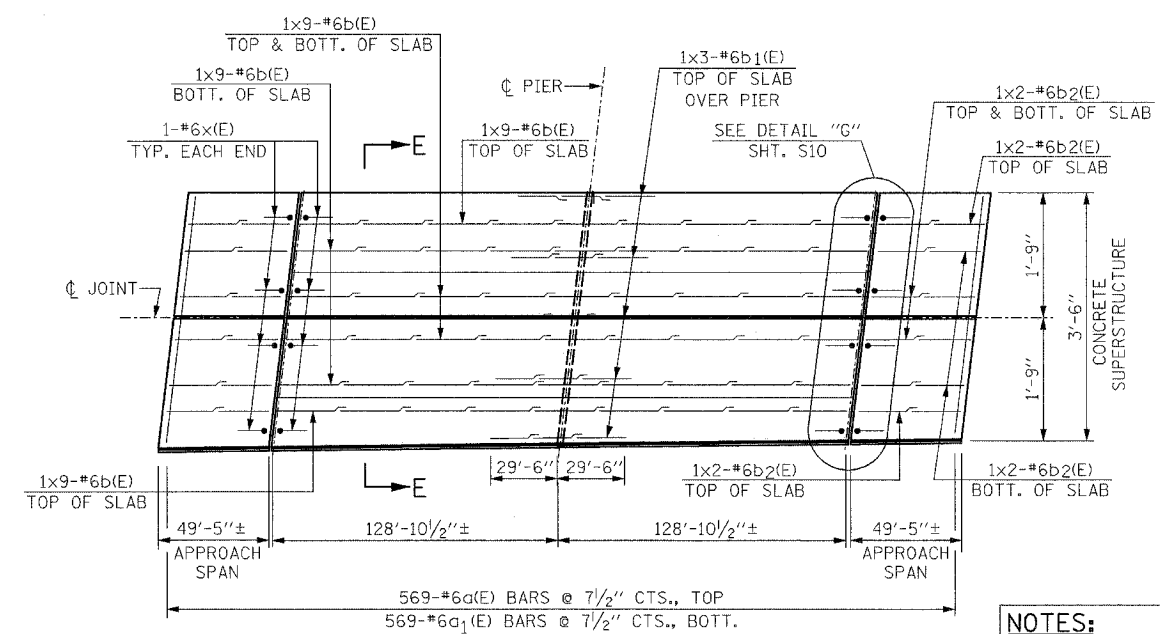


EXISTING LONGITUDINAL JOINT SECTION E-E

LEGEND:
 CONCRETE REMOVAL

BILL OF MATERIAL				
BAR	NO.	SIZE	LENGTH	SHAPE
a(E)	1,138	#6	3'-2"	—
a ₁ (E)	1,138	#6	4'-6"	⊂
b(E)	144	#6	30'-11"	—
b ₁ (E)	30	#6	21'-5"	—
b ₂ (E)	32	#6	25'-10"	—
x(E)	16	#6	4'-1"	⊂

DESCRIPTION	UNIT	QUANTITY
CONCRETE REMOVAL	CU. YD.	85
REINFORCEMENT BARS, EPOXY COATED	LB.	22,100
CONCRETE SUPERSTRUCTURE	CU. YD.	104



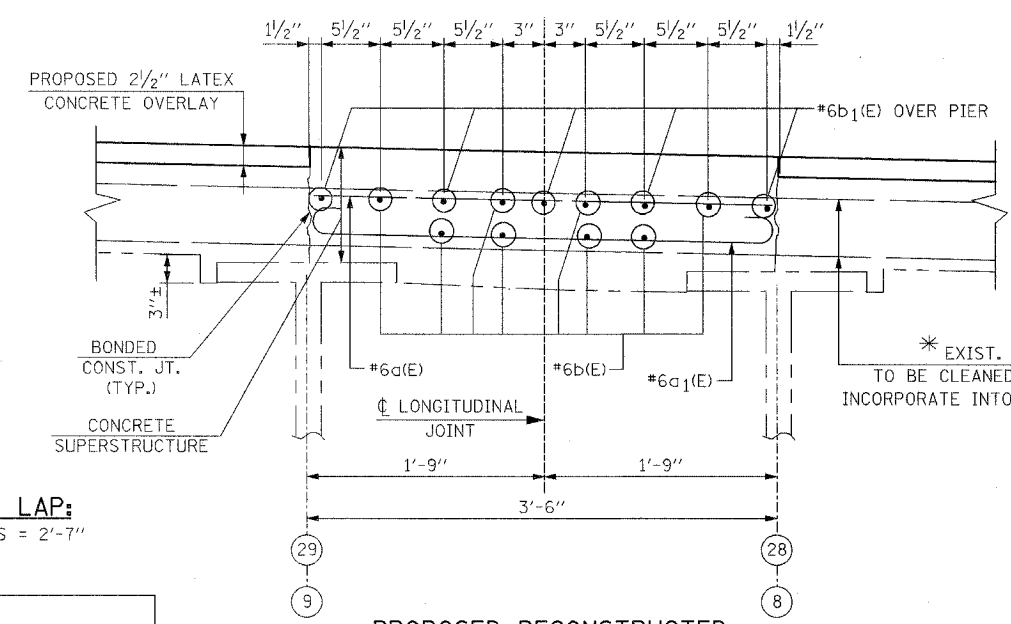
PROPOSED LONGITUDINAL JOINT DETAIL PLAN

(BETWEEN GIRDERS 29 & 28 - SHOWN)
 (BETWEEN GIRDERS 9 & 8 - SIMILAR)

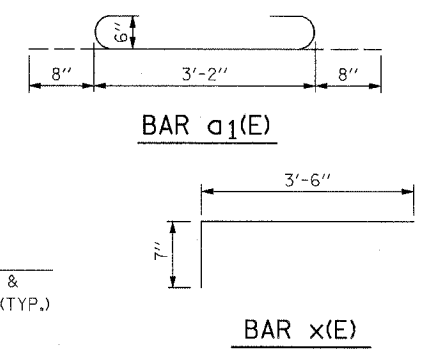
MIN. LAP:
 #6 BARS = 2'-7"

NOTES:
 FOR BAR SPACING, SEE SECTION E-E.
 REINFORCEMENT SHOWN IN APPROACH SPAN IS TYPICAL FOR BOTH APPROACH SPANS.

NOTE:
 BARS INDICATED THUS: 1x3-#6 ETC., INDICATES 1 LINE OF BARS WITH 3 LENGTHS PER LINE.



PROPOSED RECONSTRUCTED LONGITUDINAL JOINT SECTION E-E



* COST INCLUDED WITH "CONCRETE REMOVAL"

* EXIST. #6 BARS TO BE CLEANED, STRAIGHTEN & INCORPORATE INTO NEW CONST. (TYP.)

REVISIONS	
NAME	DATE

ILLINOIS DEPARTMENT OF TRANSPORTATION
 LONGITUDINAL JOINT REMOVAL
 F.A.I. RTE. 290 (I-290) OVER
 N.W. TOLLWAY (I-90)
 F.A.I. RTE. 290 SECTION: 2006-0301
 COOK COUNTY STATION 637+76.18
 STRUCTURE NO. 016-0977

SCALE: DATE: MAY 10, 2007
 DRAWN BY: D.L./F.M.
 CHECKED BY: B.N.S./J.C.N.
CHRISTIAN-ROGE & ASSOC., INC.
 CHICAGO ILLINOIS