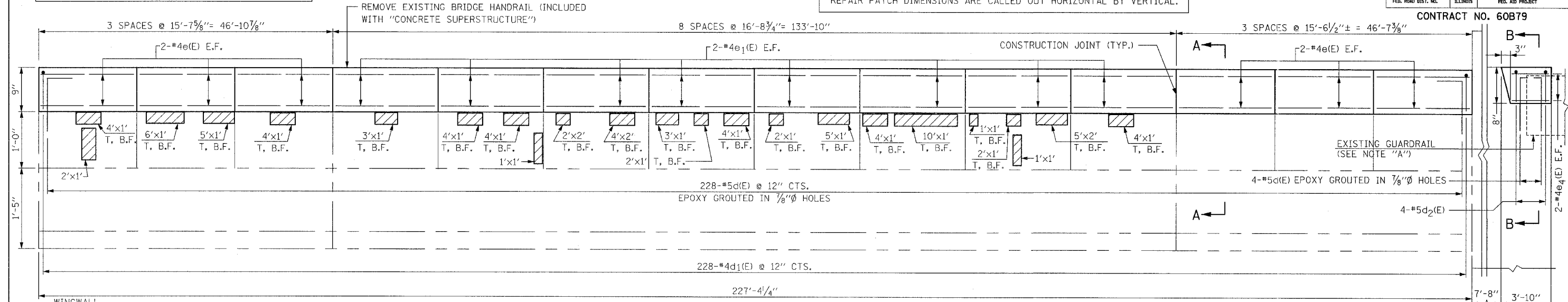


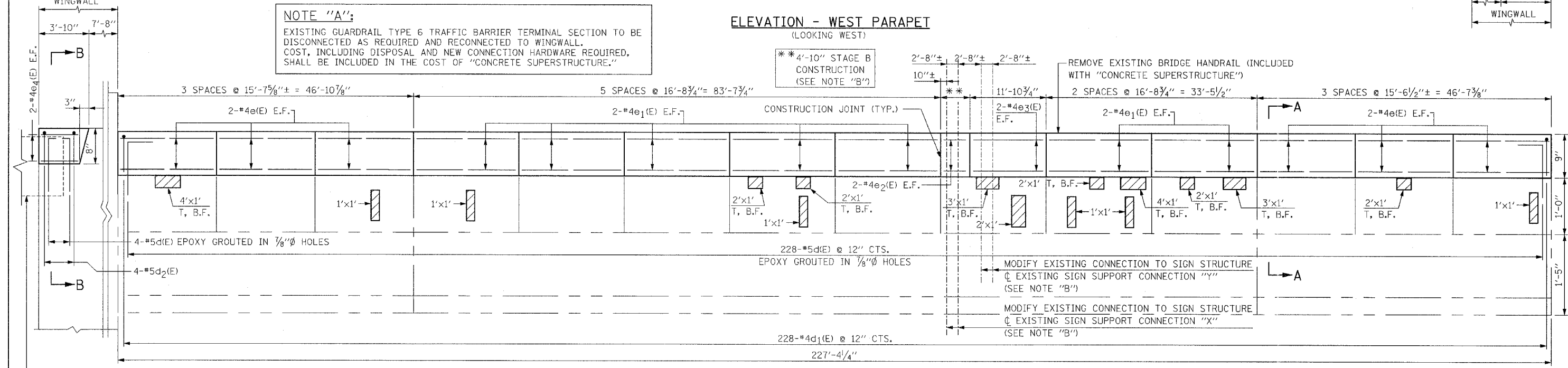
NOTE:
 VERTICAL DIMENSIONS ARE EXAGGERATED FOR CLARITY

NOTE:
 REPAIR PATCH DIMENSIONS ARE CALLED OUT HORIZONTAL BY VERTICAL.



NOTE "A":
 EXISTING GUARDRAIL TYPE 6 TRAFFIC BARRIER TERMINAL SECTION TO BE DISCONNECTED AS REQUIRED AND RECONNECTED TO WINGWALL. COST, INCLUDING DISPOSAL AND NEW CONNECTION HARDWARE REQUIRED, SHALL BE INCLUDED IN THE COST OF "CONCRETE SUPERSTRUCTURE."

ELEVATION - WEST PARAPET (LOOKING WEST)



ELEVATION - EAST PARAPET (LOOKING WEST)

NOTE "B": STAGE A: LEAVE IN PLACE SIGN STRUCTURE CONNECTIONS "X" AND REMOVE SIGN STRUCTURE CONNECTIONS "Y". CONSTRUCT ALL PARAPET EXTENSIONS EXCEPT THOSE LABELLED STAGE B CONSTRUCTION. WHEN STAGE A CONCRETE f'c REACHES 3500PSI, REINSTALL EXISTING STEEL ANGLES IN SAME LOCATION WITH NEW ANCHOR BOLTS MATCHING EXISTING.
 STAGE B: REMOVE SIGN STRUCTURE CONNECTIONS "X". CONSTRUCT ALL PARAPET EXTENSIONS LABELLED STAGE B CONSTRUCTION. WHEN STAGE B CONCRETE f'c REACHES 3500PSI, REINSTALL EXISTING STEEL ANGLES IN SAME LOCATION WITH NEW ANCHOR BOLTS MATCHING EXISTING. THERE ARE A TOTAL OF 4 NEW ANCHOR BOLTS. COST INCL. WITH "MODIFY EXISTING CONNECTION TO SIGN STRUCTURE."

LEGEND:

STRUCTURAL REPAIR OF CONCRETE (DEPTH EQUAL TO OR LESS THAN 5")

T, F.F. = TOP & FRONT FACE

T, B.F. = TOP & BACK FACE

T = TOP

E.F. = EACH FACE

I.F. = INSIDE FACE

ILLINOIS DEPARTMENT OF TRANSPORTATION

PARAPET REPAIRS

F.A.I. RTE. 290 (I-290) OVER GOLF ROAD

F.A.I. RTE. 290 SECTION: 2006-0301

COOK COUNTY STATION 612+95.92

STRUCTURE NO. 016-0980

SCALE: DATE: MAY 10, 2007

DRAWN BY: D.L./F.M.

CHECKED BY: B.N.S./J.C.N.

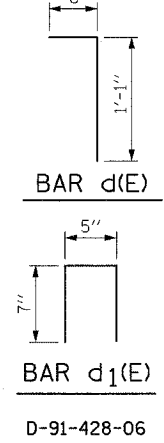
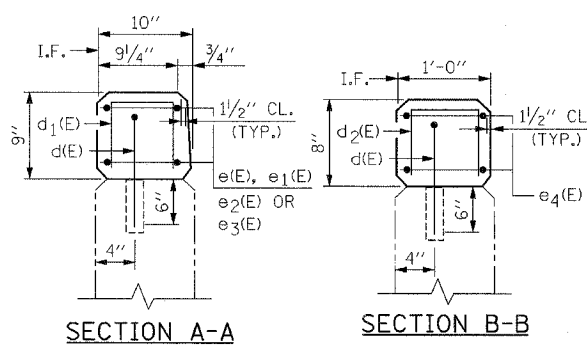
CHRISTIAN-ROGE & ASSOC., INC. CHICAGO ILLINOIS

REINFORCEMENT BAR SCHEDULE

BAR	NO.	SIZE	LENGTH	SHAPE
d(E)	464	#5	1'-7"	└
d ₁ (E)	456	#4	1'-7"	└
d ₂ (E)	8	#4	1'-7"	└
e(E)	48	#4	15'-2"	—
e ₁ (E)	60	#4	16'-4"	—
e ₂ (E)	4	#4	4'-6"	—
e ₃ (E)	4	#4	11'-6"	—
e ₄ (E)	8	#4	3'-3"	—

BILL OF MATERIAL

DESCRIPTION	UNIT	QUANTITY
STRUCTURAL REPAIR OF CONCRETE (DEPTH EQUAL TO OR LESS THAN 5")	SQ. FT.	150
CONCRETE SUPERSTRUCTURE	CU. YD.	12
REINFORCEMENT BARS, EPOXY COATED	LB.	2,460
MODIFY EXISTING CONNECTION TO SIGN STRUCTURE	EACH	4



D-91-428-06