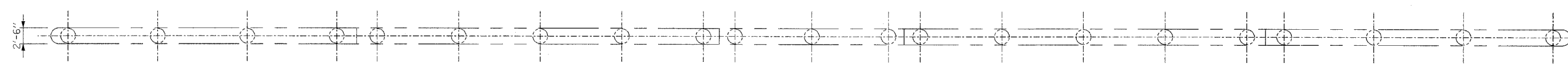
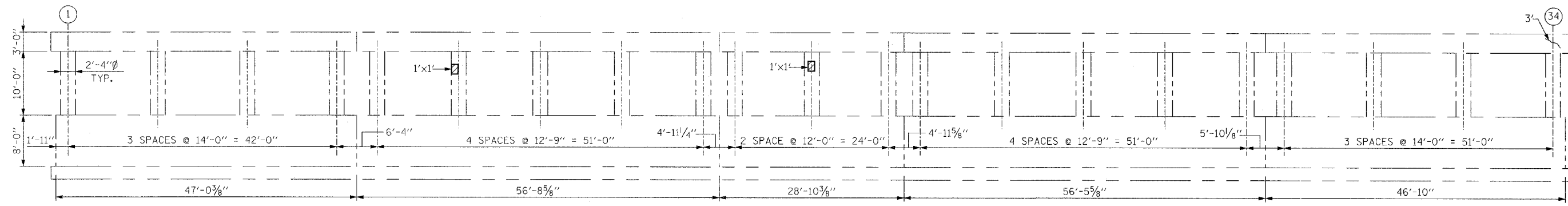


F.A.I. NO.	SECTION	COUNTY	TOTAL SHEETS	SHEET NO.
290	2006-0301	COOK	70	57
STA.		TO STA.		
FED. ROAD DIST. NO.	ILLINOIS	FED. AID PROJECT		

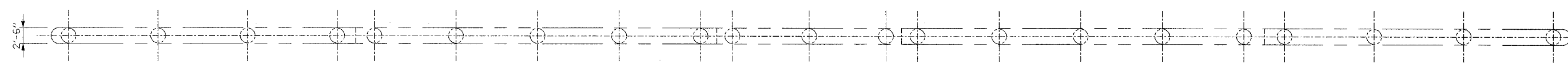
CONTRACT NO. 60B79



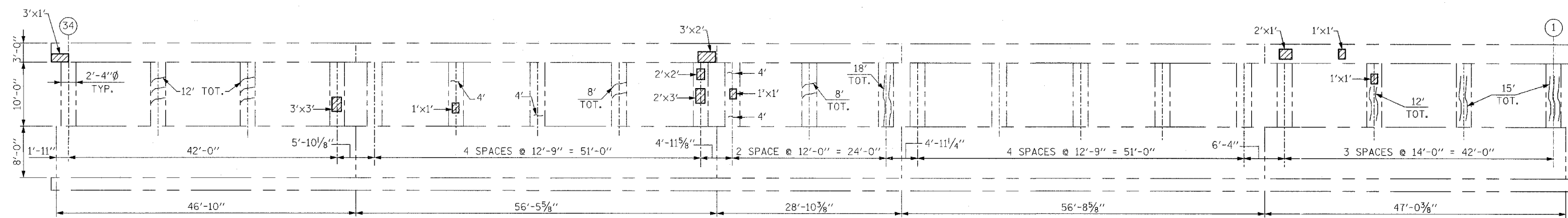
EXISTING TOP PLAN



EXISTING ELEVATION
(LOOKING NORTH)



EXISTING TOP PLAN



EXISTING ELEVATION
(LOOKING SOUTH)

NOTE:
CRACK WIDTHS ARE 1/8" ± 1/16" UNLESS OTHERWISE NOTED.
REPAIR PATCH DIMENSIONS ARE CALLED OUT HORIZONTAL BY VERTICAL.

- LEGEND:**
- STRUCTURAL REPAIR OF CONCRETE (DEPTH EQUAL TO OR LESS THAN 5")
 - EPOXY CRACK INJECTION
 - TOT. TOTAL LENGTHS OF CRACKS PER COLUMN LOOKING SOUTH

BILL OF MATERIAL		
DESCRIPTION	UNIT	QUANTITY
STRUCTURAL REPAIR OF CONCRETE (DEPTH EQUAL TO OR LESS THAN 5")	SQ. FT.	41
EPOXY CRACK INJECTION	FT.	137

REVISIONS	
NAME	DATE

ILLINOIS DEPARTMENT OF TRANSPORTATION

PIER 1 REPAIRS
F.A.I. RTE. 290 (I-290) OVER GOLF ROAD
F.A.I. RTE. 290 SECTION: 2006-0301
COOK COUNTY STATION 612+95.92
STRUCTURE NO. 016-0980

SCALE: DATE: MAY 10, 2007
DRAWN BY: D.L./F.M.
CHECKED BY: B.N.S./J.C.N.

CHRISTIAN-ROGE & ASSOC., INC.
CHICAGO ILLINOIS