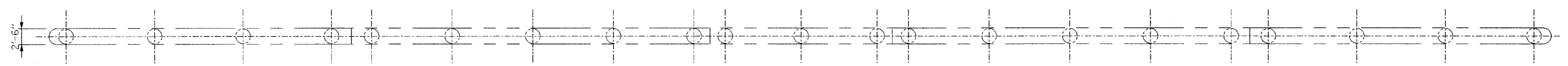
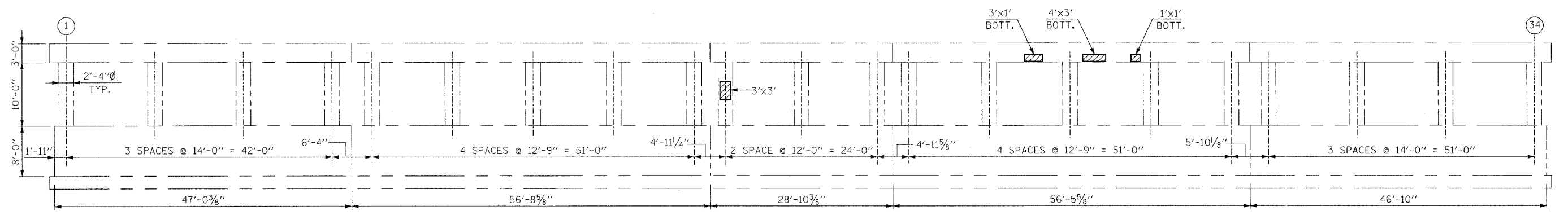


F.A.I. RTE.	SECTION	COUNTY	TOTAL SHEETS	SHEET NO.
290	2006-0301	COOK	78	58
STA.	TO STA.			
FED. ROAD DIST. NO.	ILLINOIS	FED. AID PROJECT		

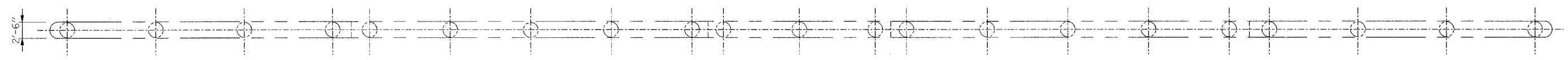
CONTRACT NO. 60B79



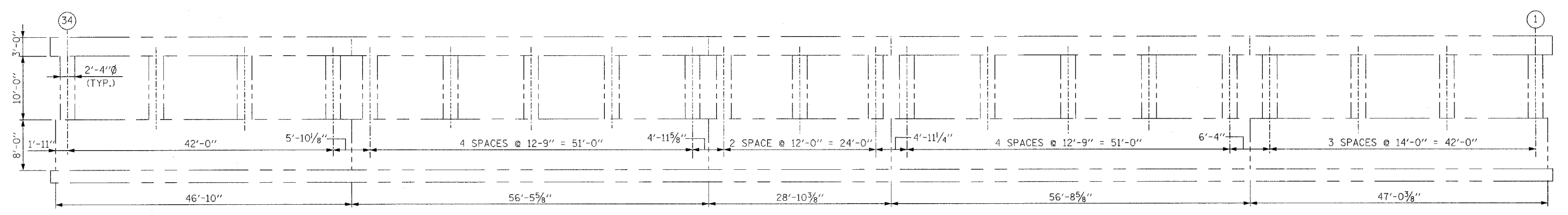
EXISTING TOP PLAN



EXISTING ELEVATION
(LOOKING NORTH)



EXISTING TOP PLAN



EXISTING ELEVATION
(THERE WERE NO SPALLS LOOKING SOUTH ALONG PIER 2)
(LOOKING SOUTH)

NOTE:
REPAIR PATCH DIMENSIONS ARE CALLED OUT HORIZONTAL BY VERTICAL.

BILL OF MATERIAL		
DESCRIPTION	UNIT	QUANTITY
STRUCTURAL REPAIR OF CONCRETE (DEPTH EQUAL TO OR LESS THAN 5')	SQ. FT.	29

LEGEND:
 STRUCTURAL REPAIR OF CONCRETE (DEPTH EQUAL TO OR LESS THAN 5')

REVISIONS	
NAME	DATE

ILLINOIS DEPARTMENT OF TRANSPORTATION

PIER 2 REPAIRS
 F.A.I. RTE. 290 (I-290) OVER GOLF ROAD
 F.A.I. RTE. 290 SECTION: 2006-0301
 COOK COUNTY STATION 612+95.92
 STRUCTURE NO. 016-0980

SCALE: DATE: MAY 10, 2007
 DRAWN BY: D.L./F.M.
 CHECKED BY: B.N.S./J.C.N.

CHRISTIAN-ROGE & ASSOC., INC.
 CHICAGO ILLINOIS