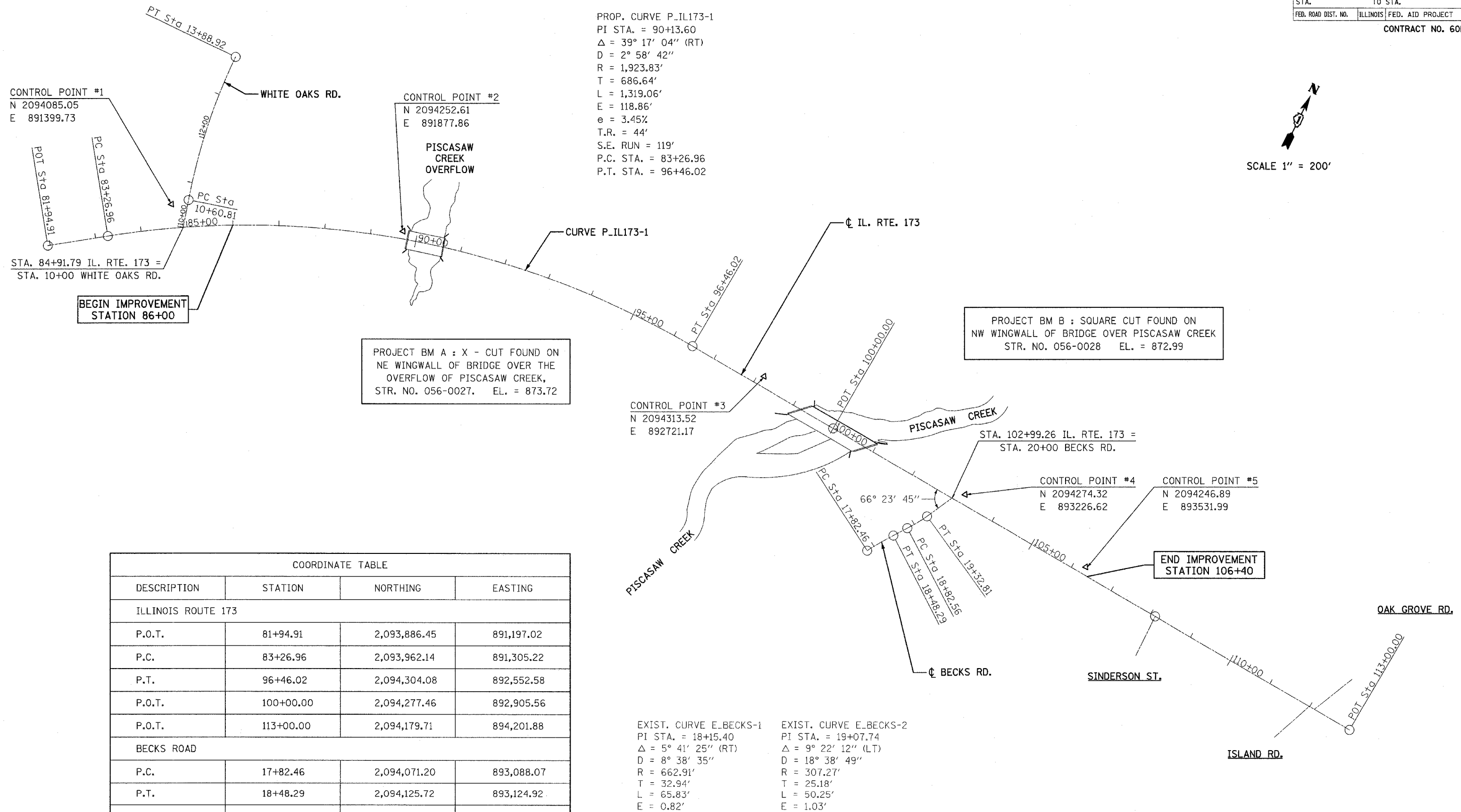
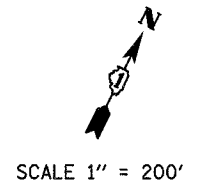


F.A.P. RTE.	SECTION	COUNTY	TOTAL SHEETS	SHEET NO.
303	131B (1&2) BR	MCHENRY	107	11
STA.		TO STA.		
FED. ROAD DIST. NO.		ILLINOIS FED. AID PROJECT		

CONTRACT NO. 60B83



PROP. CURVE P\_IL173-1  
 PI STA. = 90+13.60  
 $\Delta = 39^\circ 17' 04''$  (RT)  
 $D = 2^\circ 58' 42''$   
 $R = 1,923.83'$   
 $T = 686.64'$   
 $L = 1,319.06'$   
 $E = 118.86'$   
 $e = 3.45\%$   
 $T.R. = 44'$   
 $S.E. RUN = 119'$   
 $P.C. STA. = 83+26.96$   
 $P.T. STA. = 96+46.02$

PROJECT BM A : X - CUT FOUND ON NE WINGWALL OF BRIDGE OVER THE OVERFLOW OF PISCASAW CREEK, STR. NO. 056-0027. EL. = 873.72

PROJECT BM B : SQUARE CUT FOUND ON NW WINGWALL OF BRIDGE OVER PISCASAW CREEK STR. NO. 056-0028 EL. = 872.99

COORDINATE TABLE			
DESCRIPTION	STATION	NORTHING	EASTING
ILLINOIS ROUTE 173			
P.O.T.	81+94.91	2,093,886.45	891,197.02
P.C.	83+26.96	2,093,962.14	891,305.22
P.T.	96+46.02	2,094,304.08	892,552.58
P.O.T.	100+00.00	2,094,277.46	892,905.56
P.O.T.	113+00.00	2,094,179.71	894,201.88
BECKS ROAD			
P.C.	17+82.46	2,094,071.20	893,088.07
P.T.	18+48.29	2,094,125.72	893,124.92
P.C.	18+82.56	2,094,153.29	893,145.26
P.T.	19+32.81	2,094,195.45	893,172.50
INTERSECTION	20+00.00	2,094,254.82	893,203.96

EXIST. CURVE E\_BECKS-1  
 PI STA. = 18+15.40  
 $\Delta = 5^\circ 41' 25''$  (RT)  
 $D = 8^\circ 38' 35''$   
 $R = 662.91'$   
 $T = 32.94'$   
 $L = 65.83'$   
 $E = 0.82'$   
 $e = \text{---}$   
 $T.R. = \text{---}$   
 $S.E. RUN = \text{---}$   
 $P.C. STA. = 17+82.46$   
 $P.T. STA. = 18+48.29$

EXIST. CURVE E\_BECKS-2  
 PI STA. = 19+07.74  
 $\Delta = 9^\circ 22' 12''$  (LT)  
 $D = 18^\circ 38' 49''$   
 $R = 307.27'$   
 $T = 25.18'$   
 $L = 50.25'$   
 $E = 1.03'$   
 $e = \text{---}$   
 $T.R. = \text{---}$   
 $S.E. RUN = \text{---}$   
 $P.C. STA. = 18+82.56$   
 $P.T. STA. = 19+32.81$

**CR**  
 CHRISTIAN-ROGE & ASSOCIATES, INC.  
 ENGINEERS-PLANNERS-SURVEYORS  
 211 WEST WACKER DRIVE  
 CHICAGO, ILLINOIS 60606  
 1-312-372-2023 FAX: 1-312-372-5274

REVISIONS	
NAME	DATE

ILLINOIS DEPARTMENT OF TRANSPORTATION  
 ALIGNMENT, TIES AND BENCHMARKS  
 ILLINOIS ROUTE 173 AND BECKS ROAD

SCALE: 1" = 200'  
 DATE: APRIL 16, 2007  
 DRAWN BY: A.C.S.  
 CHECKED BY: S.J.P.