

DATE	
BY	
PLAN	
NO.	
REVISION	
DATE	
BY	
NO.	

DATE	
BY	
PROFILE	
NO.	
REVISION	
DATE	
BY	
NO.	

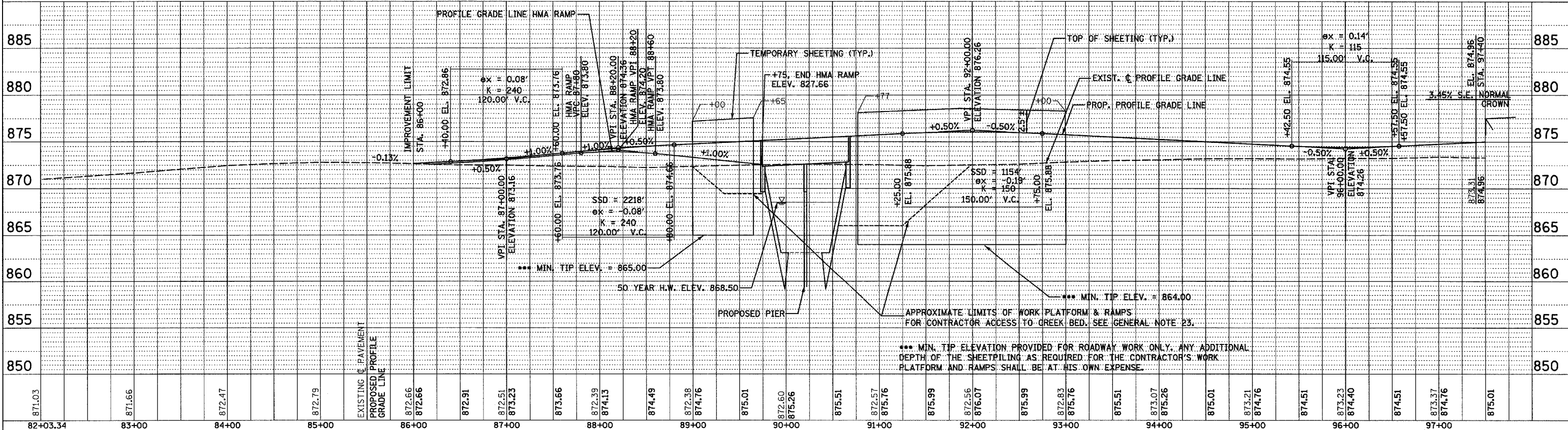
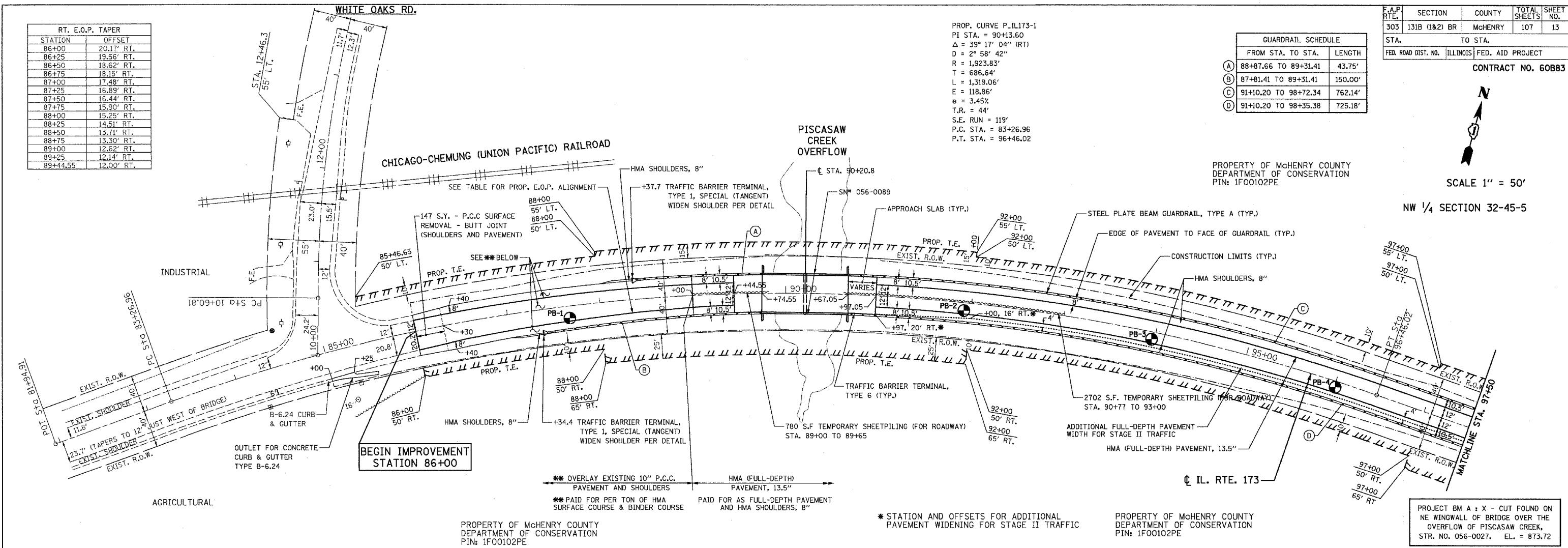
RT. E.O.P. TAPER	
STATION	OFFSET
86+00	20.17' RT.
86+25	19.56' RT.
86+50	18.62' RT.
86+75	18.15' RT.
87+00	17.48' RT.
87+25	16.89' RT.
87+50	16.44' RT.
87+75	15.90' RT.
88+00	15.25' RT.
88+25	14.51' RT.
88+50	13.71' RT.
88+75	13.30' RT.
89+00	12.62' RT.
89+25	12.14' RT.
89+44.55	12.00' RT.

PROP. CURVE P.I.173-1
 PI STA. = 90+13.60
 $\Delta = 39^\circ 17' 04''$ (RT)
 $D = 2^\circ 58' 42''$
 $R = 1,923.83'$
 $T = 686.64'$
 $L = 1,319.06'$
 $E = 118.86'$
 $e = 3.45\%$
 $T.R. = 44'$
 $S.E. RUN = 119'$
 $P.C. STA. = 83+26.96$
 $P.T. STA. = 96+46.02$

GUARDRAIL SCHEDULE		
FROM STA. TO STA.	LENGTH	
(A) 88+87.66 TO 89+31.41	43.75'	
(B) 87+81.41 TO 89+31.41	150.00'	
(C) 91+10.20 TO 98+72.34	762.14'	
(D) 91+10.20 TO 98+35.38	725.18'	

F.A.P. RTE.	SECTION	COUNTY	TOTAL SHEETS	SHEET NO.
303	131B (1&2) BR	McHENRY	107	13
STA.		TO STA.		
FED. ROAD DIST. NO.	ILLINOIS	FED. AID PROJECT		
CONTRACT NO. 60B83				

SCALE 1" = 50'
 NW 1/4 SECTION 32-45-5



PROPOSED PLAN AND PROFILE STA. 86+00 TO STA. 97+50 ILLINOIS ROUTE 173

DATE: APRIL 25, 2007