

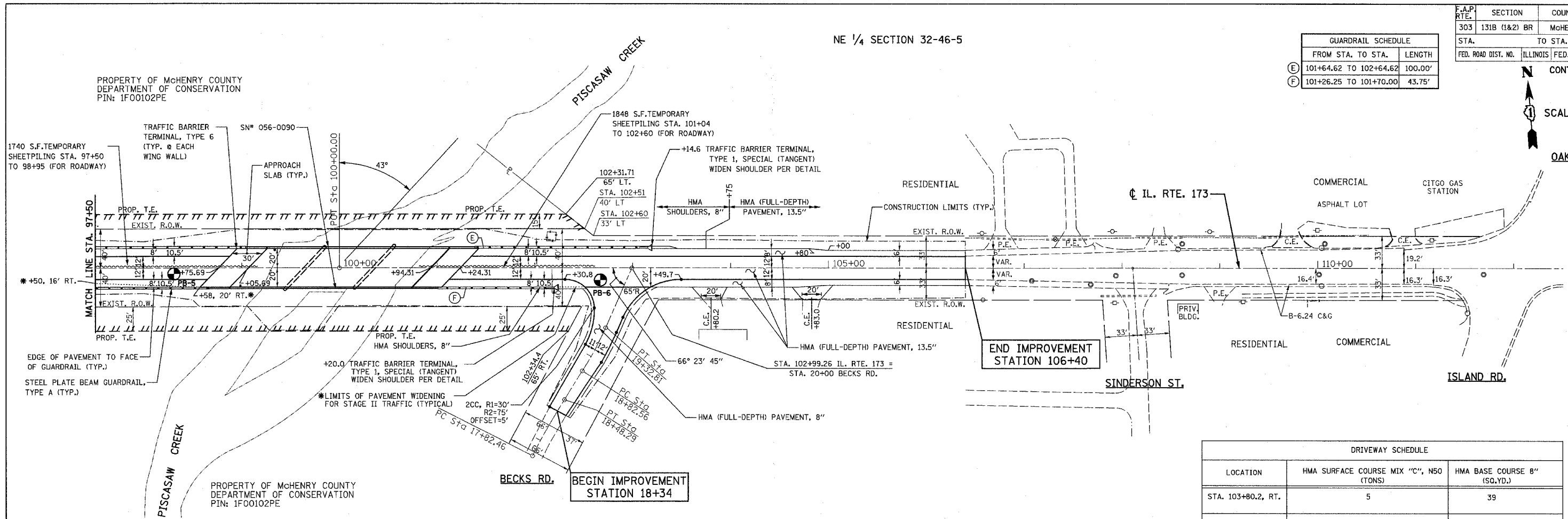
NE 1/4 SECTION 32-46-5

F.A.P. RTE.	SECTION	COUNTY	TOTAL SHEETS	SHEET NO.
303	131B (1&2) BR	McHENRY	107	14
STA.	TO STA.			
FED. ROAD DIST. NO.	ILLINOIS	FED. AID PROJECT		

GUARDRAIL SCHEDULE		
FROM STA.	TO STA.	LENGTH
(E) 101+64.62	TO 102+64.62	100.00'
(F) 101+26.25	TO 101+70.00	43.75'

SCALE 1" = 50'

DATE	
BY	
REVISION	
NO.	
DESCRIPTION	

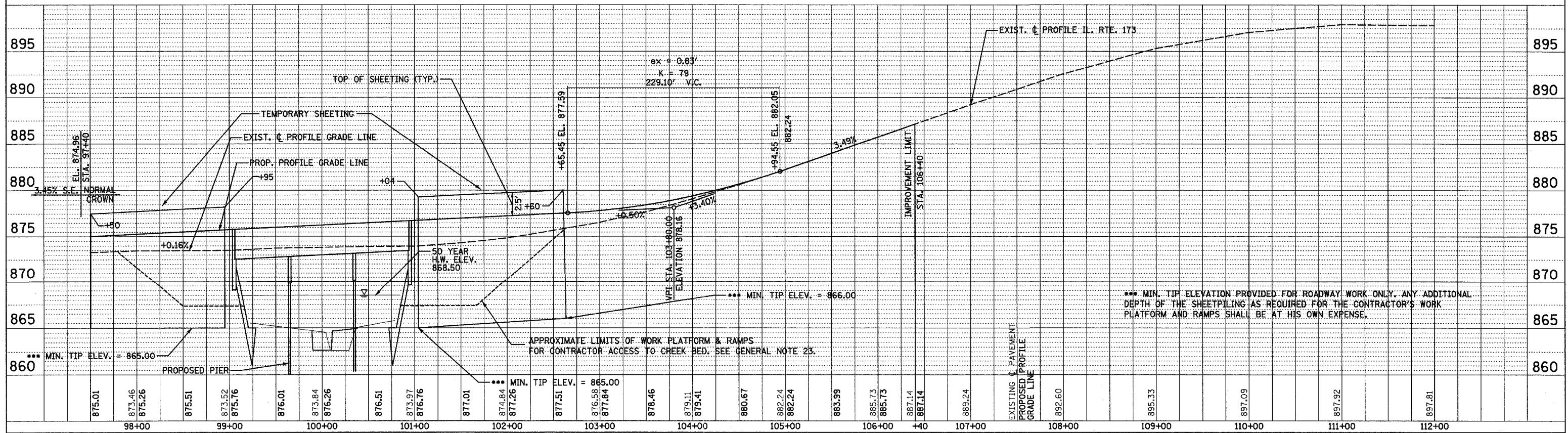


DRIVEWAY SCHEDULE		
LOCATION	HMA SURFACE COURSE MIX "C", N50 (TONS)	HMA BASE COURSE 8" (SQ.YD.)
STA. 103+80.2, RT.	5	39
STA. 104+83.0, RT.	5	45

PROJECT BM B : SQUARE CUT FOUND ON NW WINGWALL OF BRIDGE OVER PISCASAW CREEK, STR. NO. 056-0028. EL. = 872.99

\* STATION AND OFFSETS FOR ADDITIONAL PAVEMENT WIDENING FOR STAGE II TRAFFIC

DATE	
BY	
REVISION	
NO.	
DESCRIPTION	



\*\*\* MIN. TIP ELEVATION PROVIDED FOR ROADWAY WORK ONLY. ANY ADDITIONAL DEPTH OF THE SHEETPIILING AS REQUIRED FOR THE CONTRACTOR'S WORK PLATFORM AND RAMPS SHALL BE AT HIS OWN EXPENSE.

DATE: APRIL 25, 2007

PROPOSED PLAN AND PROFILE STA. 97+50 TO 105+00 ILLINOIS ROUTE 173