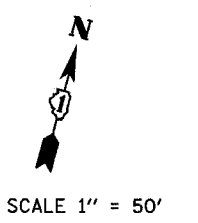


F.A.P. RTE.	SECTION	COUNTY	TOTAL SHEETS	SHEET NO.
303	131B (1&2) BR	McHENRY	107	16
STA.		TO STA.		
FED. ROAD DIST. NO.		ILLINOIS FED. AID PROJECT		
CONTRACT NO. 60B83				



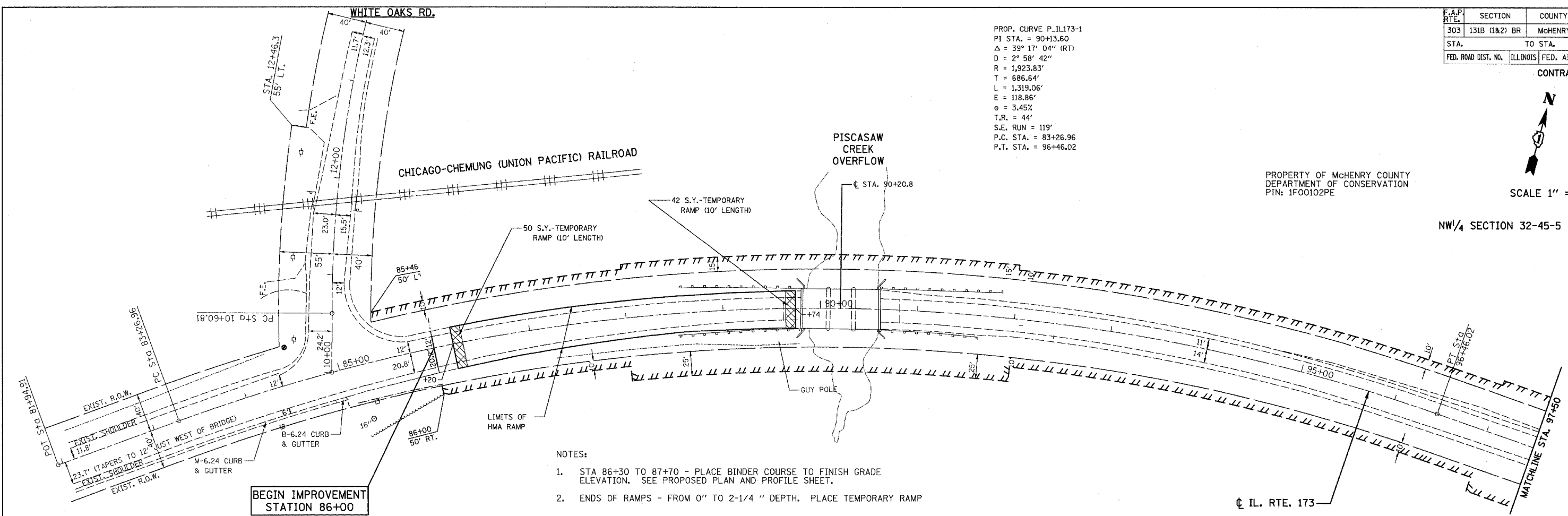
NW/4 SECTION 32-45-5

PROPERTY OF McHENRY COUNTY
DEPARTMENT OF CONSERVATION
PIN: 1F00102PE

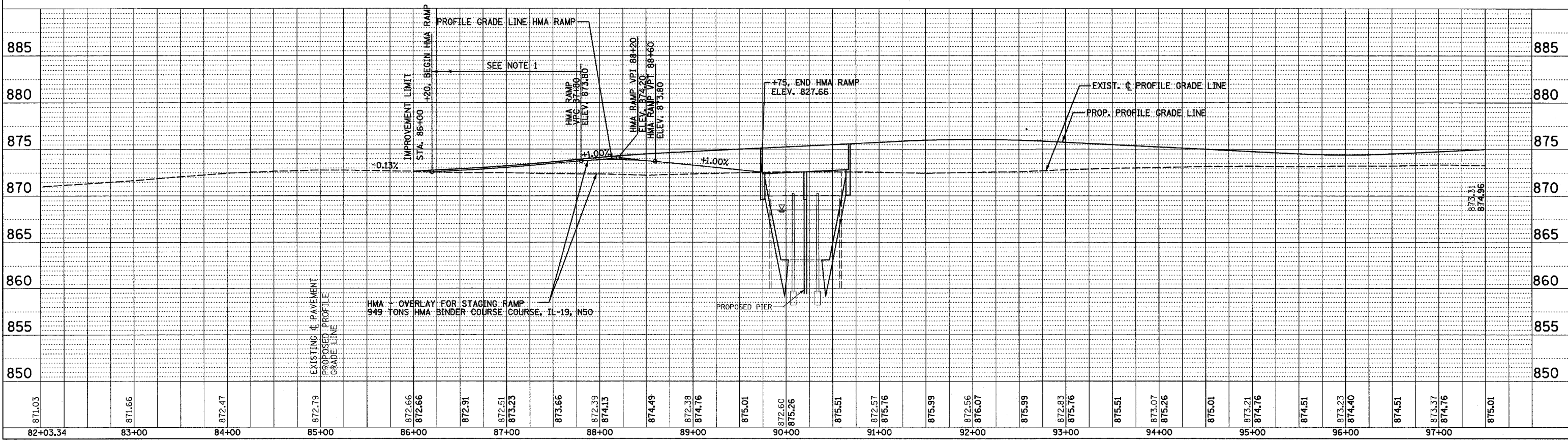
PROP. CURVE P_IL173-1
PI STA. = 90+13.60
 $\Delta = 39^\circ 17' 04''$ (RT)
 $D = 2^\circ 58' 42''$
 $R = 1,923.83'$
 $T = 686.64'$
 $L = 1,319.06'$
 $E = 118.86'$
 $e = 3.45\%$
 $T.R. = 44'$
 $S.E. RUN = 119'$
P.C. STA. = 83+26.96
P.T. STA. = 96+46.02

PLAN	DATE
SURVEYED	
ALIGNED	
CHECKED	
BY	
DATE	

PROFILE	DATE
SURVEYED	
GRADES CHECKED	
BLM. NOTED	
BY	
DATE	



- NOTES:
- STA 86+30 TO 87+70 - PLACE BINDER COURSE TO FINISH GRADE ELEVATION. SEE PROPOSED PLAN AND PROFILE SHEET.
 - ENDS OF RAMPS - FROM 0" TO 2-1/4" DEPTH. PLACE TEMPORARY RAMP
 - MINIMUM LIFT THICKNESS OF HMA BINDER COURSE SHALL BE 2-1/2". MAXIMUM LIFT THICKNESS SHALL NOT EXCEED 4" IN COMPACTED THICKNESS.
 - PLACE HMA RAMP IN PRE-STAGE. USE STANDARD 701301. COST SHALL BE INCLUDED IN TRAFFIC CONTROL AND PROTECTION SPECIAL.



DATE: APRIL 25, 2007

IL RTE 173 HMA RAMP DETAIL