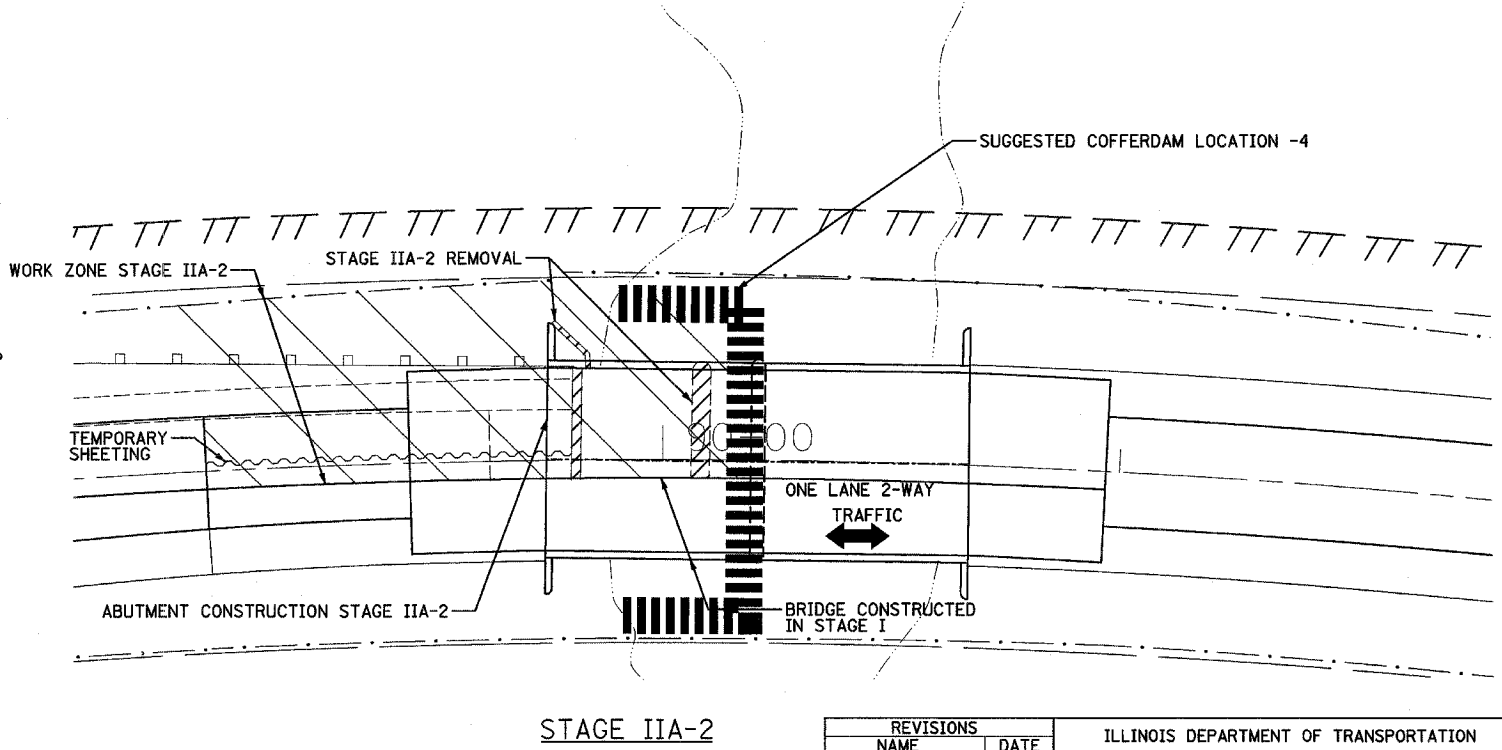
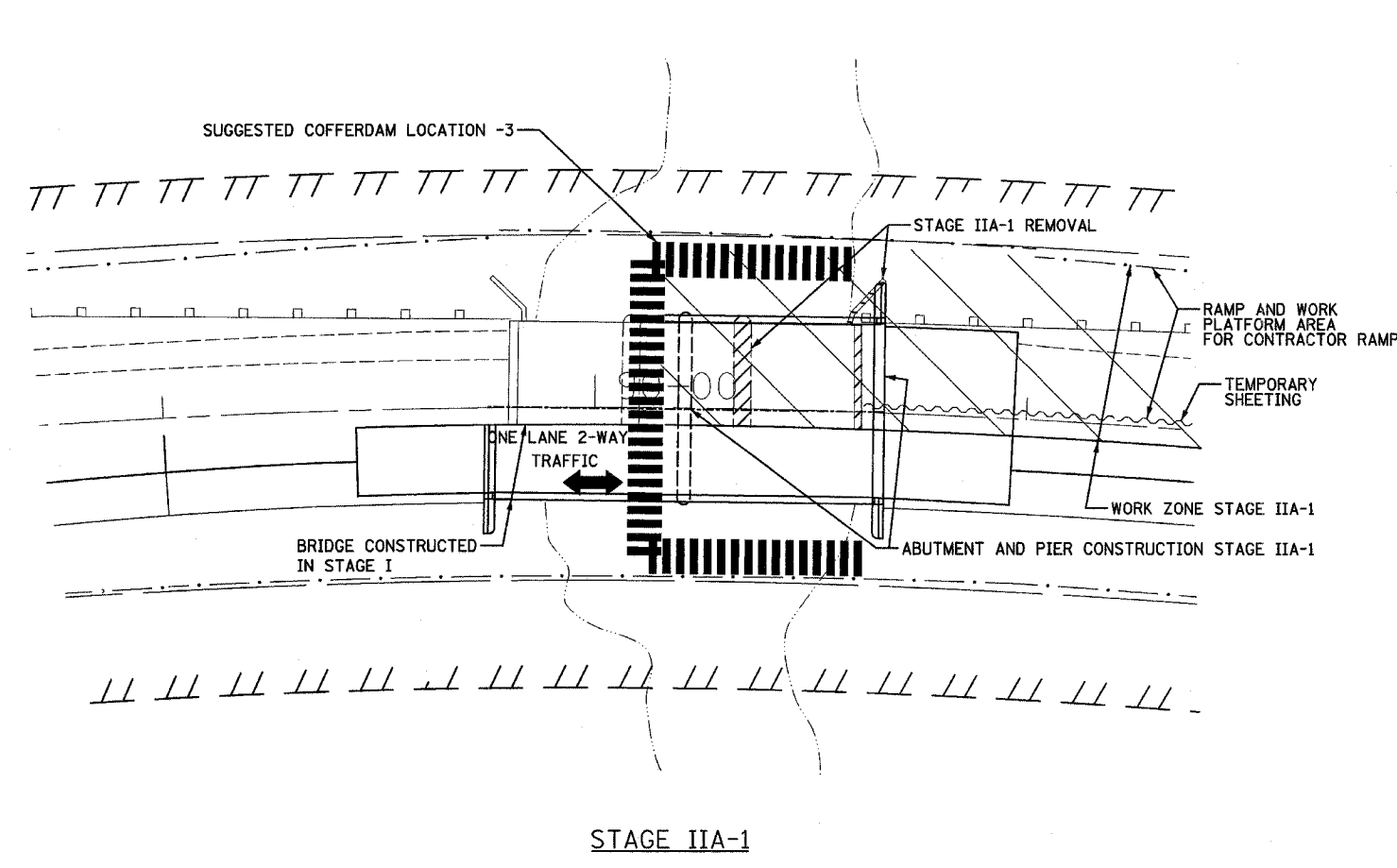
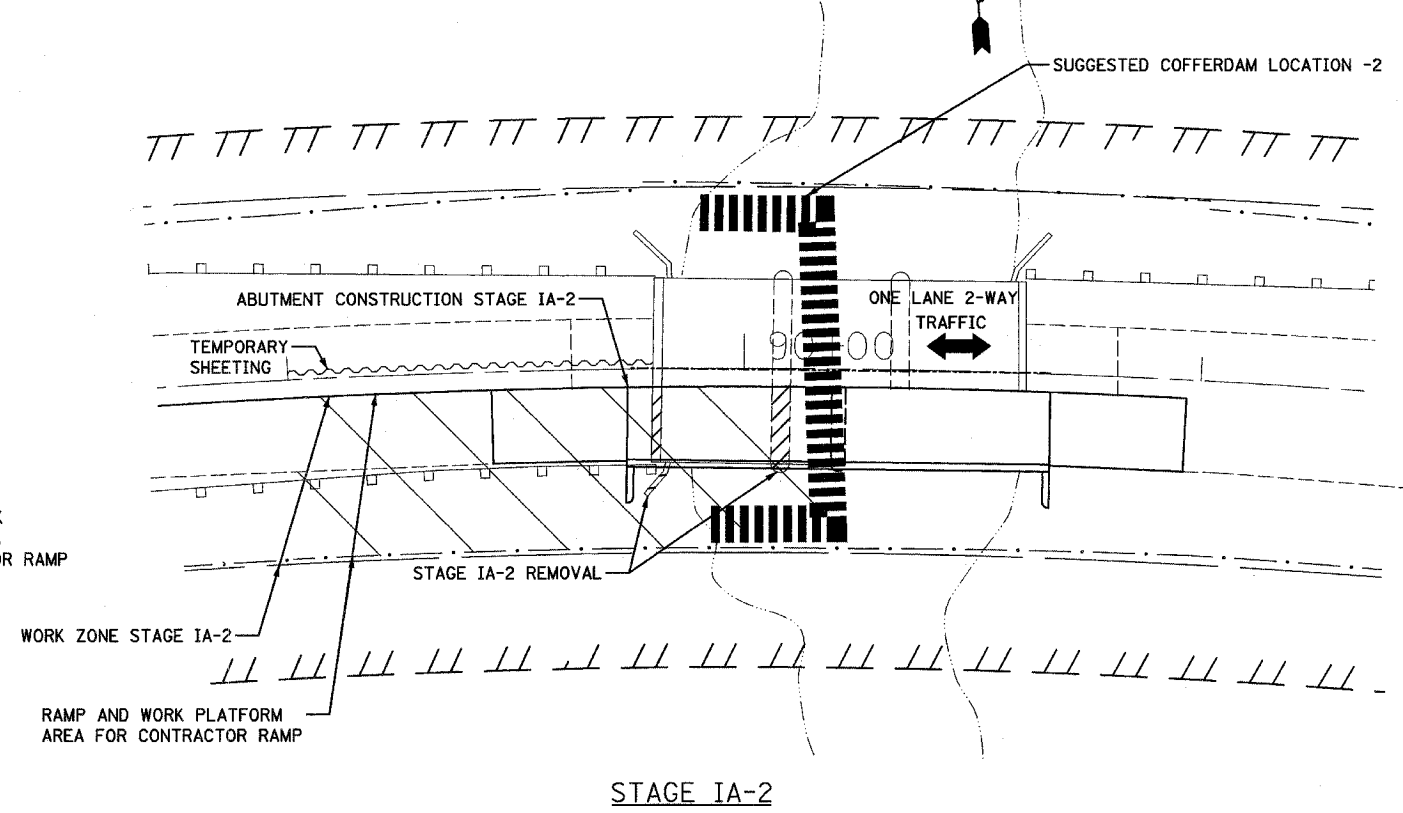
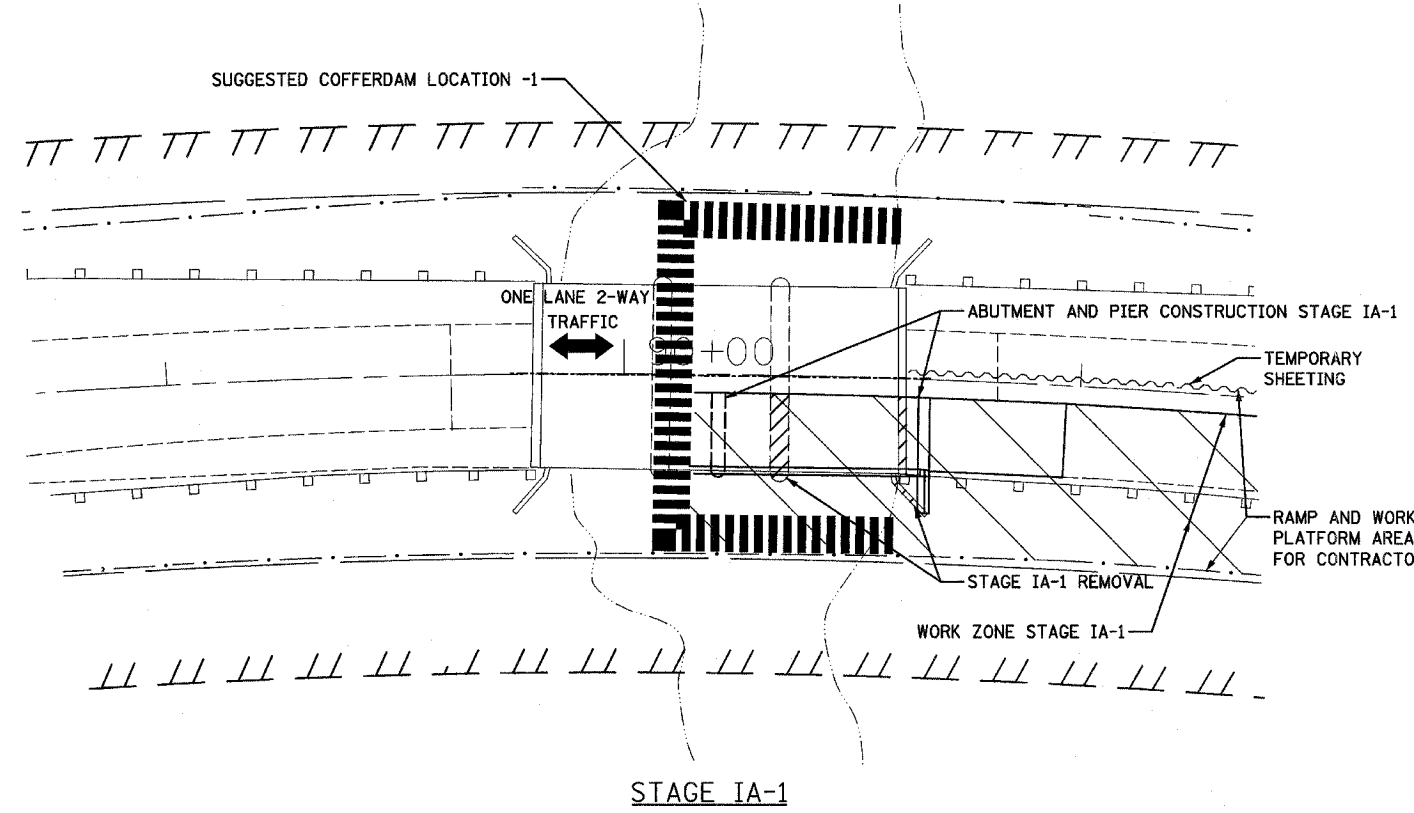
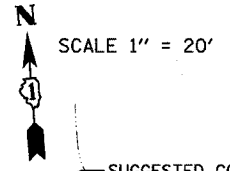


# PISCASAW CREEK OVERFLOW STRUCTURE - STAGED CONSTRUCTION

F.A.P. RTE.	SECTION	COUNTY	TOTAL SHEETS	SHEET NO.
303	131B (1&2) BR	McHENRY	107	25
STA.	TO STA.			
FED. ROAD DIST. NO.	ILLINOIS	FED. AID PROJECT		

CONTRACT NO. 60B83



**CR & A**  
**CHRISTIAN-ROGE & ASSOCIATES, INC.**  
 ENGINEERS-PLANNERS-SURVEYORS  
 211 WEST WACKER DRIVE  
 CHICAGO, ILLINOIS 60606  
 1-312-372-2023 FAX: 1-312-372-5274

REVISIONS	
NAME	DATE

ILLINOIS DEPARTMENT OF TRANSPORTATION  
 SUGGESTED STAGED CONSTRUCTION  
 ILLINOIS ROUTE 173 OVER  
 PISCASAW CREEK OVERFLOW

SCALE: 1" = 20'  
 DATE: APRIL 16, 2007

DRAWN BY: A.C.S.  
 CHECKED BY: S.J.P.