

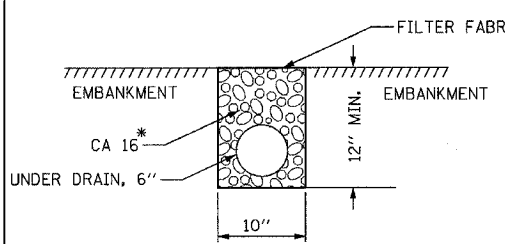
F.A.P. RTE.	SECTION	COUNTY	TOTAL SHEETS	SHEET NO.
303	131B (1&2) BR	MCHEMRY	107	33
STA.		TO STA.		
FED. ROAD DIST. NO.		ILLINOIS FED. AID PROJECT		

CONTRACT NO. 60B83



SCALE 1" = 50'

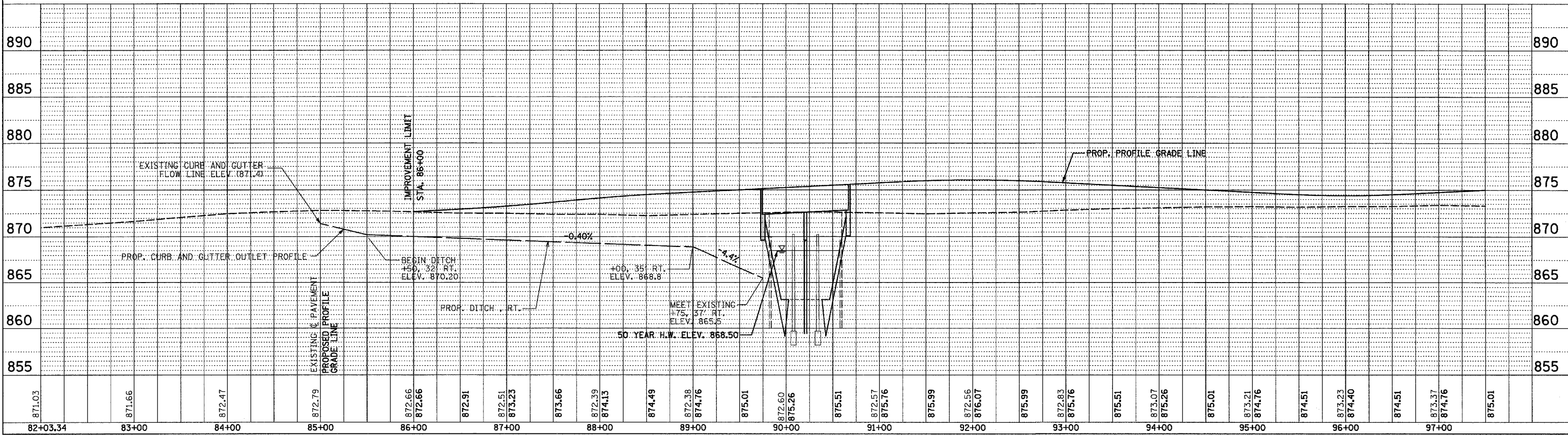
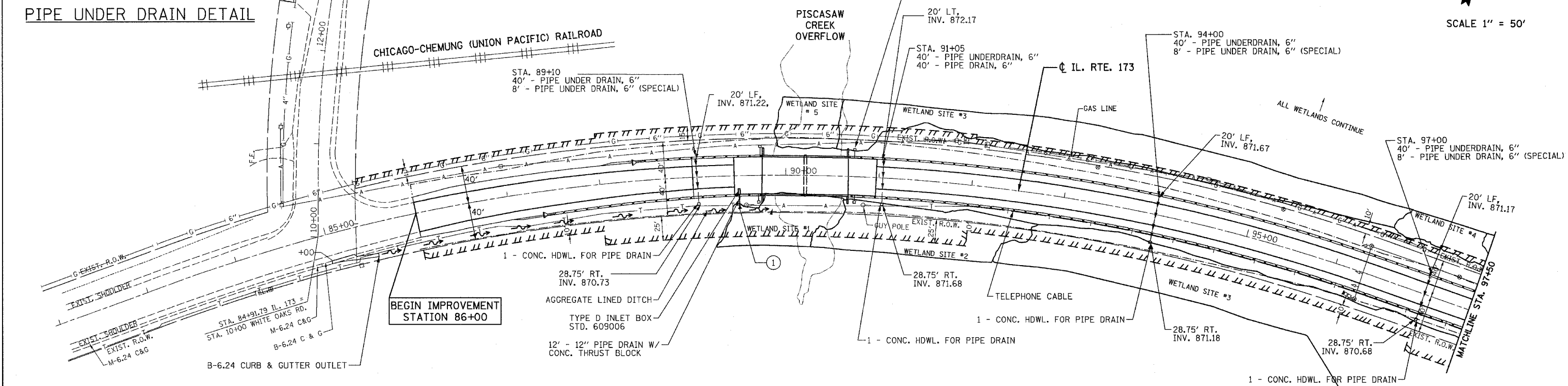
PROJECT BM A : X - CUT FOUND ON NE WINGWALL OF BRIDGE OVER THE OVERFLOW OF PISCASAW CREEK, STR. NO. 056-0027. EL. = 873.72



PIPE UNDER DRAIN DETAIL

NOTE:
FROM STA. 86+00 TO STA. 89+00, ALL EXISTING UNDER DRAINS SHALL BE EXTENDED TO FINISHED GRADE. TO BE PAID FOR AS CONCRETE HEADWALL FOR PIPE DRAIN AND PIPE DRAIN TO MATCH THE EXISTING DIAMETER.

*COST INCLUDED IN PIPE UNDER DRAIN, 6"



DATE	BY	REVISION

DATE	BY	REVISION

DATE: APRIL 25, 2007

PROPOSED DRAINAGE AND UTILITY STA. 86+00 TO STA. 97+50 ILLINOIS ROUTE 173