

F.A.P. RTE.	SECTION	COUNTY	TOTAL SHEETS	SHEET NO.
303	131B(1&2)BR	McHENRY	107	43
STA.	TO STA.			
FED. ROAD DIST. NO.	ILLINOIS	FED. AID PROJECT		

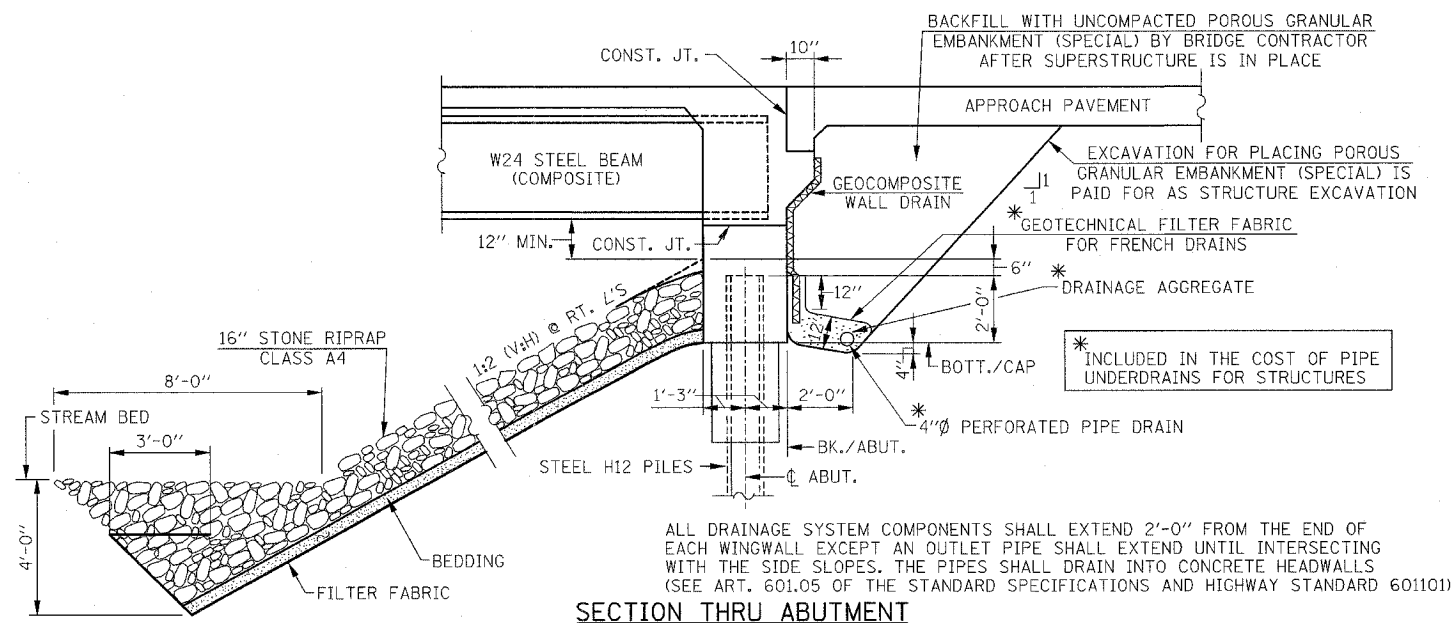
CONTRACT NO. 60B83

TOTAL BILL OF MATERIAL

ITEM	UNIT	SUPER	SUB	TOTAL
POROUS GRANULAR EMBANKMENT (SPECIAL)	CU. YD.	-	107	107
STONE RIPRAP, CLASS A4	SQ. YD.	-	490	490
FILTER FABRIC	SQ. YD.	-	402	402
STRUCTURE EXCAVATION	CU. YD.	-	223	223
REMOVAL OF EXISTING STRUCTURES NO. 2	EACH	-	-	1
CONCRETE STRUCTURES	CU. YD.	-	83.1	83.1
CONCRETE SUPERSTRUCTURES	CU. YD.	144	-	144
BRIDGE DECK GROOVING	SQ. YD.	391	-	391
PROTECTIVE COAT	SQ. YD.	486	-	486
REINFORCEMENT BARS, EPOXY COATED	LB.	28,080	11,820	39,900
FURNISHING STEEL PILES HP 12x53	FOOT	-	1,026	1,026
DRIVING PILES HP 12x53	FOOT	-	1,026	1,026
TEST PILES, STEEL HP 12x53	EACH	-	3	3
NAME PLATES	EACH	1	-	1
PIPE UNDERDRAINS FOR STRUCTURES, 4"	FOOT	-	158	158
GEOCOMPOSITE WALL DRAIN	SQ. YD.	-	56	56
CONCRETE ENCASEMENT	CU. YD.	-	18.9	18.9
FURNISHING AND ERECTING STRUCTURE STEEL	L.S.	0.35	-	0.35
STUD SHEAR CONNECTORS	EACH	2,814	-	2,814
TEMPORARY SHEET PILING	SQ. FT.	-	743	743
BAR SPLICERS	EACH	341	48	389
PILE SHOES	EACH	-	21	21
ANCHOR BOLTS 1	EACH	42	-	42
UNDERWATER STRUCTURE EXCAVATION PROTECTION, LOCATION 2	EACH	-	1	1

GENERAL NOTES:

- CALCULATED WEIGHT OF STRUCTURAL STEEL = 58,000 LBS. (M270, GRADE 50) - 6,000 LBS. (M270, GRADE 36)
- FASTENERS SHALL BE AASHTO M164 TYPE I, MECHANICALLY GALVANIZED BOLTS, BOLTS 3/4 IN. Ø, HOLES 1/8 IN. Ø, UNLESS OTHERWISE NOTED.
- NO FIELD WELDING IS PERMITTED EXCEPT AS SPECIFIED IN THE CONTRACT DOCUMENTS.
- BEARING SEAT SURFACES SHALL BE CONSTRUCTED OR ADJUSTED TO THE DESIGNATED ELEVATIONS WITHIN A TOLERANCE OF 1/8 IN. (0.01 FT.). ADJUSTMENT SHALL BE MADE EITHER BY GRINDING THE SURFACE OR BY SHIMMING THE BEARINGS.
- LOAD CARRYING COMPONENTS DESIGNATED "NTR" SHALL CONFORM TO THE SUPPLEMENTAL REQUIREMENTS FOR NOTCH TOUGHNESS, ZONE 2.
- THE INORGANIC ZINC RICH PRIMER/ACRYLIC/ACRYLIC PAINT SYSTEM SHALL BE USED FOR SHOP AND FIELD PAINTING OF NEW STRUCTURAL STEEL EXCEPT WHERE OTHERWISE NOTED. THE COLOR OF THE FINAL FINISH COAT FOR ALL INTERIOR STEEL SURFACES SHALL BE GRAY, MUNSELL NO. 5B 7/1. THE COLOR OF THE FINAL FINISH COAT FOR THE EXTERIOR AND BOTTOM FLANGE OF THE FASCIA BEAMS SHALL BE REDDISH BROWN MUNSELL NO. 2.5YR 3/4. SEE SPECIAL PROVISION FOR "CLEANING AND PAINTING NEW METAL STRUCTURES".
- REINFORCEMENT BARS SHALL CONFORM TO THE REQUIREMENTS OF ASTM A 706 GR. 60 (IL MODIFIED) SEE SPECIAL PROVISIONS.
- REINFORCEMENT BARS DESIGNATED (E) SHALL BE EPOXY COATED.
- LAYOUT OF SLOPE PROTECTION MAY BE VARIED TO SUIT GROUND CONDITIONS IN THE FIELD AS DIRECTED BY THE ENGINEER.
- FOR PAVEMENT REMOVAL AND CHANNEL EXCAVATION BETWEEN EXISTING AND NEW ABUTMENTS, SEE ROADWAY PLANS.
- FOR CLEANING OUT AND RESHAPING CHANNEL, SEE ROADWAY PLANS. REMOVAL OF EXISTING DEBRIS IN THE CHANNEL IS INCLUDED WITH PAY ITEM FOR "CHANNEL EXCAVATION".
- THE CONTRACTOR SHALL DRIVE TEST PILES TO 110% OF THE NOMINAL REQUIRED BEARING SPECIFIED IN PRODUCTION LOCATIONS AT SUBSTRUCTURES SPECIFIED OR APPROVED BY THE ENGINEER BEFORE ORDERING THE REMAINDER OF PILES.



SECTION THRU ABUTMENT

REVISIONS	
NAME	DATE

ILLINOIS DEPARTMENT OF TRANSPORTATION  
 GENERAL NOTES & TOTAL BILL OF MATERIAL  
 IL. RTE. 173  
 OVER  
 PISCASAW CREEK OVERFLOW  
 F.A.P. RTE. 303 SECTION: 131B(1&2)BR  
 McHENRY COUNTY STATION 90+20.80  
 STRUCTURE NO. 056-0089  
 SCALE: DRAWN BY: D.L./F.M.  
 DATE: APRIL 13, 2007 CHECKED BY: B.N.S./J.C.N.  
 CHRISTIAN-ROGE & ASSOC., INC.  
 CHICAGO ILLINOIS