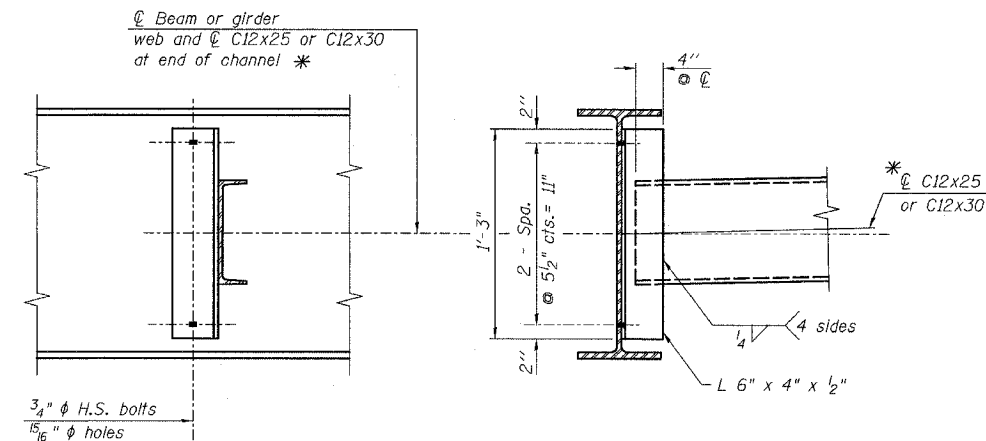


| | | | | |
|---------------------|-------------|------------------|--------------|-----------|
| F.A.P. NO. | SECTION | COUNTY | TOTAL SHEETS | SHEET NO. |
| 303 | 131B(1&2)BR | McHENRY | 107 | 51 |
| STA. | | TO STA. | | |
| FED. ROAD DIST. NO. | ILLINOIS | FED. AID PROJECT | | |

CONTRACT NO. 60B83



INTERIOR DIAPHRAGM D

Note:
Two hardened washers required for each set of oversized holes.

* Alternate channels are permitted to facilitate material acquisition. Calculated weight of structural steel is based on the lighter section.

*****TOP OF BEAM ELEVATIONS**

| Beam | ℄ Brg. W. Abut. | ℄ Pier | ℄ Splice | ℄ Brg. E. Abut. |
|------|-----------------|--------|----------|-----------------|
| 1 | 875.10 | 875.24 | 875.27 | 875.54 |
| 2 | 874.88 | 875.02 | 875.05 | 875.32 |
| 3 | 874.66 | 874.80 | 874.83 | 875.10 |
| 4 | 874.44 | 874.58 | 874.61 | 874.89 |
| 5 | 874.22 | 874.37 | 874.40 | 874.67 |
| 6 | 874.00 | 874.15 | 874.18 | 874.45 |
| 7 | 873.78 | 873.93 | 873.96 | 874.23 |

***For fabrication only

| REVISIONS | |
|-----------|------|
| NAME | DATE |
| | |
| | |
| | |
| | |
| | |
| | |

ILLINOIS DEPARTMENT OF TRANSPORTATION
STRUCTURAL STEEL DETAILS
IL. RTE. 173
OVER
PISCASAW CREEK OVERFLOW
F.A.P. RTE. 303 SECTION: 131B(1&2)BR
McHENRY COUNTY STATION 90+20.80
STRUCTURE NO. 056-0089

SCALE: DATE: APRIL 13, 2007 DRAWN BY: D.L./F.M. CHECKED BY: B.N.S./J.C.N.

CHRISTIAN-ROGE & ASSOC., INC.
CHICAGO ILLINOIS

ILLINOIS DEPARTMENT OF TRANSPORTATION