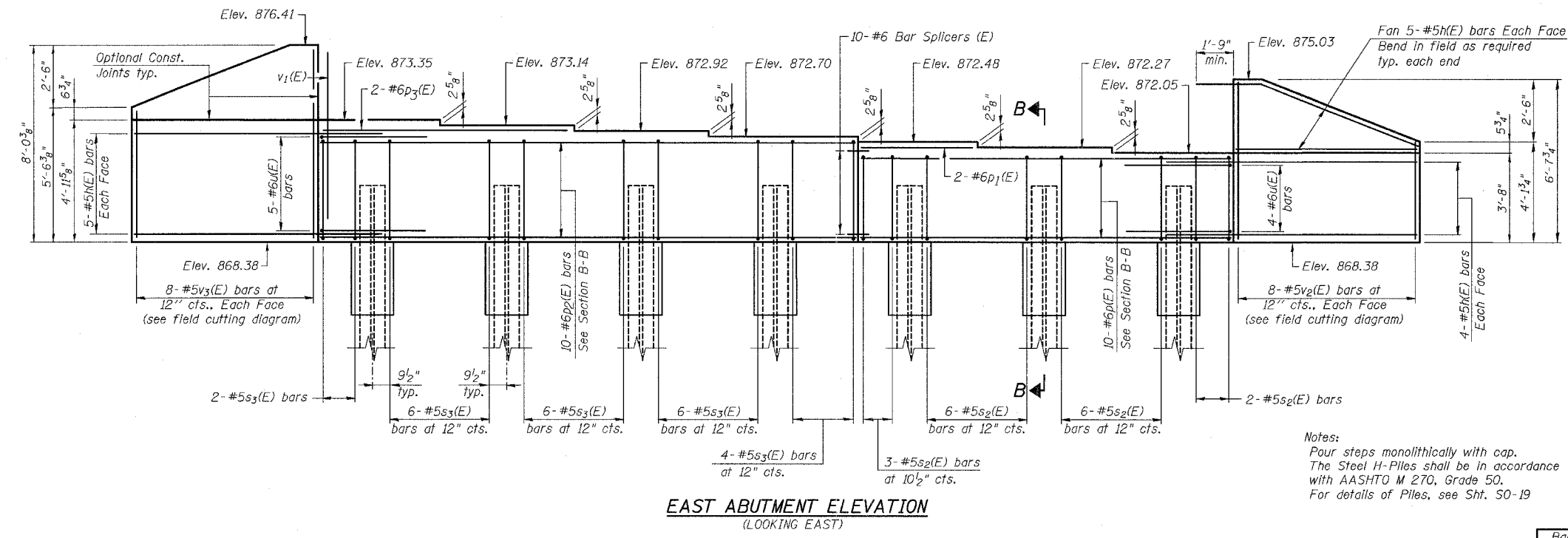


CONTRACT NO. 60B83

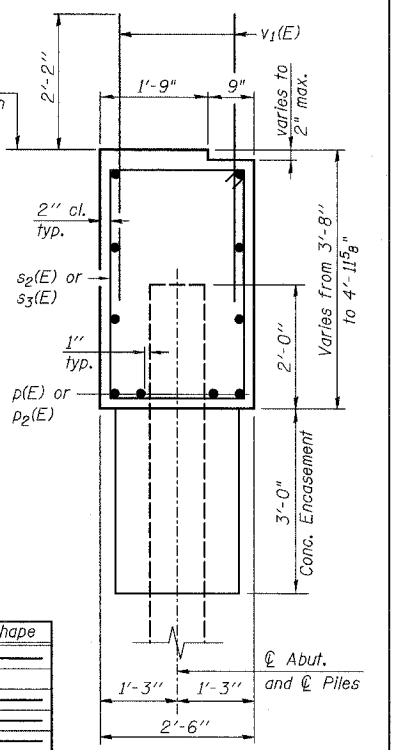


BILL OF MATERIAL

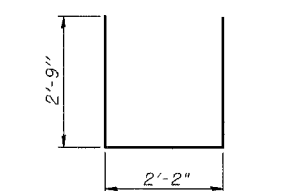
Bar	No.	Size	Length	Shape
h(E)	38	#5	9'-2"	—
p(E)	10	#6	17'-4"	—
p ₁ (E)	2	#6	5'-3"	—
p ₂ (E)	10	#6	25'-1"	—
p ₃ (E)	2	#6	11'-9"	—
s ₂ (E)	17	#5	11'-7"	□
s ₃ (E)	24	#5	12'-11"	□
u(E)	9	#6	7'-8"	—
v ₁ (E)	87	#5	4'-6"	—
v ₂ (E)	8	#5	10'-0"	—
v ₃ (E)	8	#5	12'-4"	—

Item	Unit	Quantity
Structure Excavation	Cu. Yd.	106
Concrete Structures	Cu. Yd.	20.4
Reinforcement Bars, Epoxy Coated	Pound	2,280
Furnishing Steel Piles HP 12x53	Foot	342
Driving Piles	Foot	342
Test Pile Steel HP 12x53	Each	1
Bar Splicers	Each	10
Porous Granular Embankment, Special	Cu. Yd.	56
Stone Riprap, Class A4	Sq. Yd.	241
Filter Fabric	Sq. Yd.	157
Pipe Underdrains for Structures, 4"	Foot	79
Geocomposite Wall Drain	Sq. Yd.	28
Pile Shoes	Each	7
Concrete Encasement	Cu. Yd.	2.5

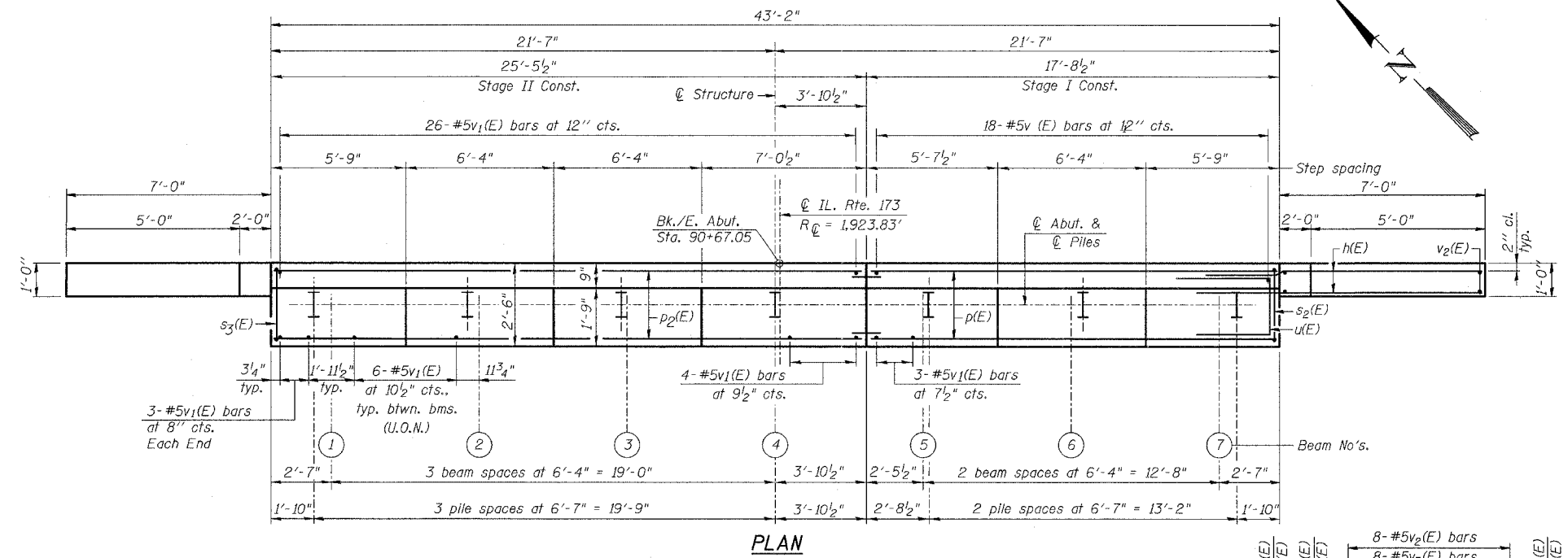
SECTION B-B



BARS s₂(E) & s₃(E)



BAR u(E)



LEGEND:

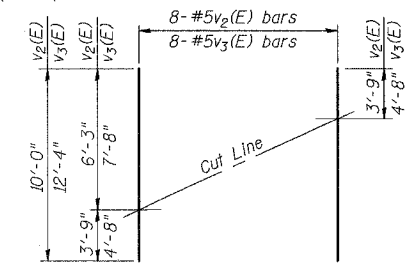
U.O.N. = Unless Otherwise Noted

PILE DATA

Type: Steel HP 12x53 with Pile Shoes
 Nominal Required Bearing: 419 kips
 Factored Resistance Available: 139.6 kips
 Est. Length: 57 ft.
 No. Production Piles: 6
 No. Test Piles: 1

FIELD CUTTING DIAGRAM

Order v₂(E) & v₃(E) full length. Cut as shown and use remainder of bars in opposite face.



REVISIONS

NAME	DATE

ILLINOIS DEPARTMENT OF TRANSPORTATION

**EAST ABUTMENT
 IL. RTE. 173
 OVER
 PISCASAW CREEK OVERFLOW
 F.A.P. RTE. 303 SECTION: 131B(1&2)BR
 McHENRY COUNTY STATION 90+20.80
 STRUCTURE NO. 056-0089**

SCALE: DATE: APRIL 13, 2007
 DRAWN BY: D.L./F.M.
 CHECKED BY: B.N.S./J.C.N.

CHRISTIAN-ROGE & ASSOC., INC.
 CHICAGO ILLINOIS