

Wang Engineering, Inc.
 Consulting Geotechnical and Environmental Engineers
 wangeng30@wengeng.com
 1145 N. Main Street
 Lombard, IL 60148
 Telephone: 630 953-9928
 Fax: 630 953-9938

BORING LOG OB-01
 WEI Job No.: 950-06-01
 Datum: NGVD
 Elevation: 865.22 Ft
 North: 2894284.78 Ft
 East: 891887.35 Ft
 Station: 69+85
 Offset: 45 LT

Client: Christian-Roge & Associates, Inc.
 Project: IL-173 Bridge over Piascasaw Creek Overflow (PCO)
 Location:

Wang Engineering, Inc.
 Consulting Geotechnical and Environmental Engineers
 wangeng30@wengeng.com
 1145 N. Main Street
 Lombard, IL 60148
 Telephone: 630 953-9928
 Fax: 630 953-9938

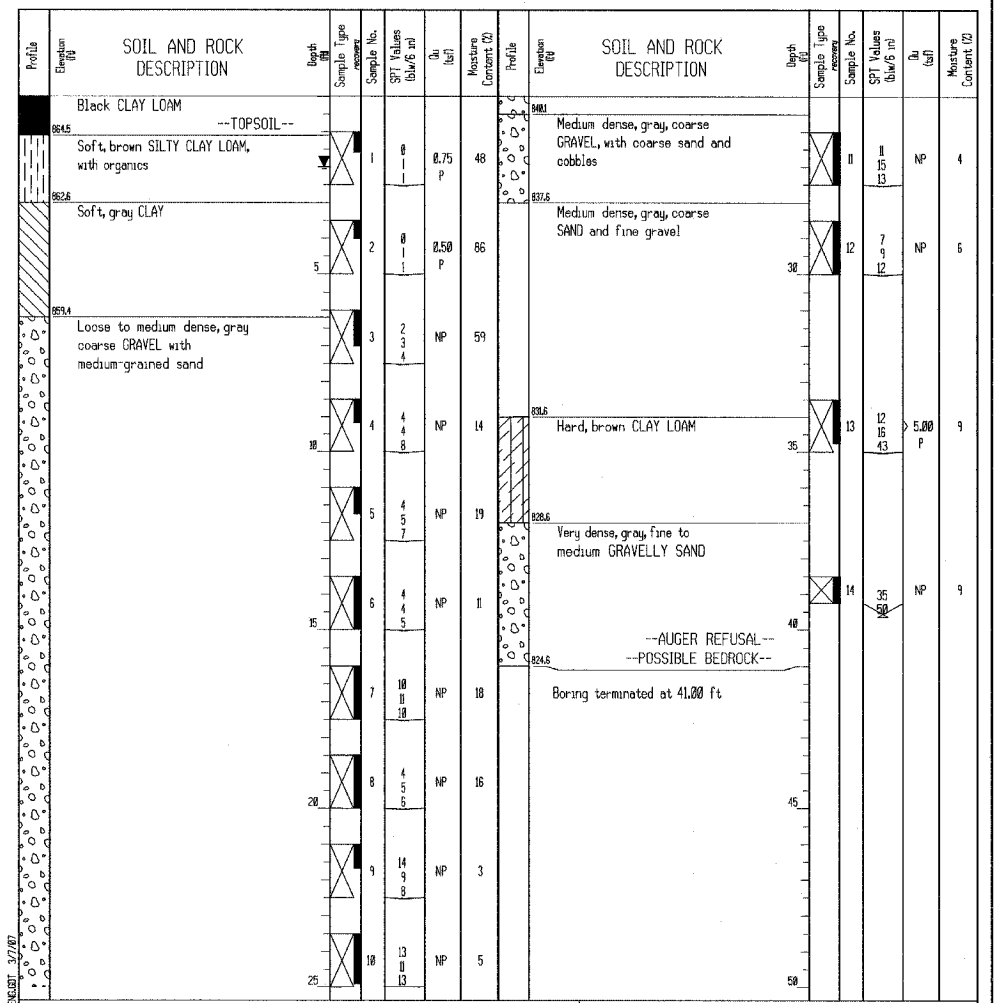
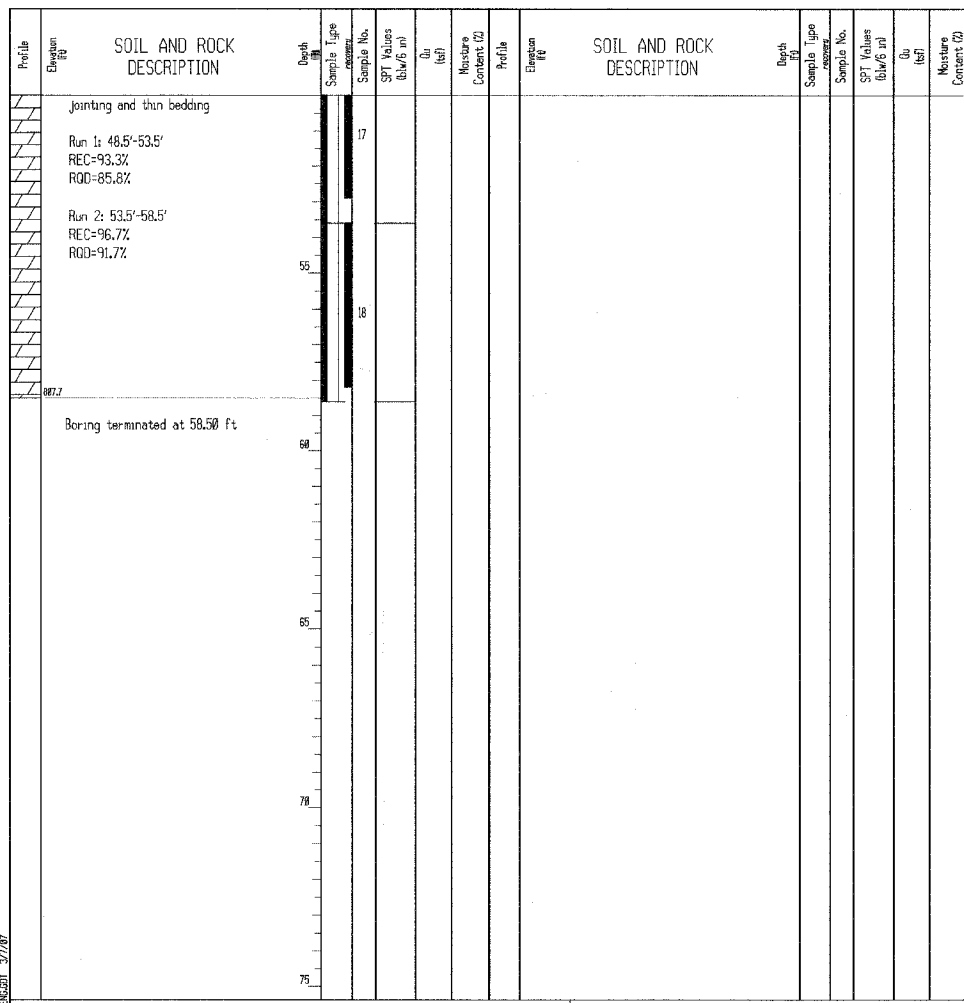
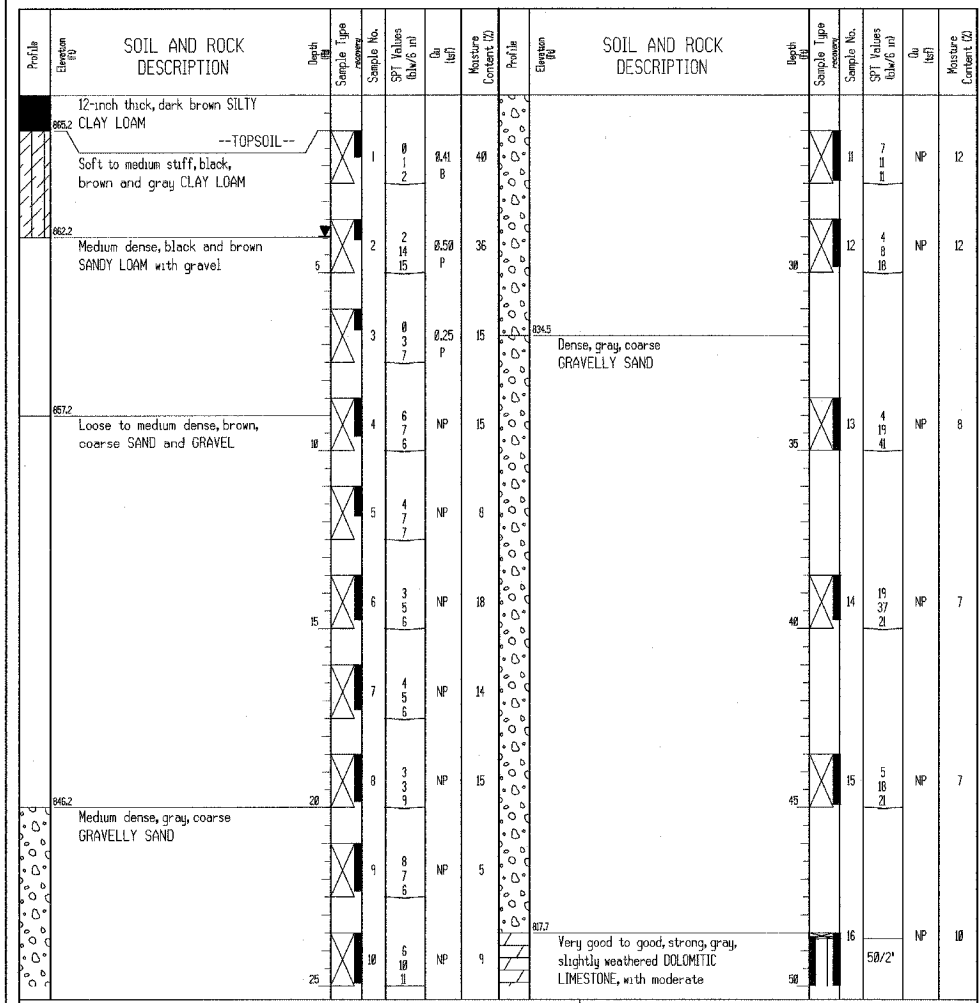
BORING LOG OB-01
 WEI Job No.: 950-06-01
 Datum: NGVD
 Elevation: 865.22 Ft
 North: 2894284.78 Ft
 East: 891887.35 Ft
 Station: 69+85
 Offset: 45 LT

Client: Christian-Roge & Associates, Inc.
 Project: IL-173 Bridge over Piascasaw Creek Overflow (PCO)
 Location:

Wang Engineering, Inc.
 Consulting Geotechnical and Environmental Engineers
 wangeng30@wengeng.com
 1145 N. Main Street
 Lombard, IL 60148
 Telephone: 630 953-9928
 Fax: 630 953-9938

BORING LOG OB-02
 WEI Job No.: 950-06-01
 Datum: NGVD
 Elevation: 865.68 Ft
 North: 2894284.11 Ft
 East: 891971.95 Ft
 Station: 70+51
 Offset: 48 RT

Client: Christian-Roge & Associates, Inc.
 Project: IL-173 Bridge over Piascasaw Creek Overflow (PCO)
 Location:



GENERAL NOTES		WATER LEVEL DATA	
Begin Drilling	12-19-2006	Complete Drilling	12-19-2006
Drilling Contractor	Precon	Drill Rig	CME-75 ATV
Driller	K&S	Logger	D.Constantine
Checked by	E. Datz	Time After Drilling	NA
Drilling Method	3.25 HSA	Depth to Water	NA

GENERAL NOTES		WATER LEVEL DATA	
Begin Drilling	12-19-2006	Complete Drilling	12-19-2006
Drilling Contractor	Precon	Drill Rig	CME-75 ATV
Driller	K&S	Logger	D.Constantine
Checked by	E. Datz	Time After Drilling	NA
Drilling Method	3.25 HSA	Depth to Water	NA

GENERAL NOTES		WATER LEVEL DATA	
Begin Drilling	01-19-2007	Complete Drilling	01-19-2007
Drilling Contractor	Precon	Drill Rig	CME-75 ATV
Driller	S&J	Logger	D.Constantine
Checked by	E. Datz	Time After Drilling	NA
Drilling Method	3.25 HSA	Depth to Water	NA

ILLINOIS DEPARTMENT OF TRANSPORTATION

SOIL BORING LOGS-I
 IL. RTE. 173
 OVER
 PISCASAW CREEK OVERFLOW
 F.A.P. RTE. 303 SECTION: 131B(1&2)BR
 McHENRY COUNTY STATION 90+20.80
 STRUCTURE NO. 056-0089

SCALE: DATE: APRIL 13, 2007
 DRAWN BY: D.L./F.M.
 CHECKED BY: B.N.S./J.C.N.

CHRISTIAN-ROGE & ASSOC., INC.
 CHICAGO ILLINOIS

REVISIONS	
NAME	DATE