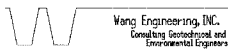


F.A.P. No.	SECTION	COUNTY	TOTAL SHEETS	SHEET No.
303	131B(1&2)BR	McHENRY	107	64
STA. TO STA.		FED. AID PROJECT		
FED. ROAD DIST. NO.		ILLINOIS	FED. AID PROJECT	

CONTRACT NO. 60B83



Wang Engineering, Inc.
Consulting Geotechnical and Environmental Engineers
wangeng3@wangeng.com
1145 N. Main Street
Lombard, IL 60148
Telephone: 630 953-9928
Fax: 630 953-9938

BORING LOG OB-03

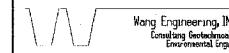
WEI Job No.: 950-06-01

Client: Christian-Roge & Associates, Inc.

Project: IL-173 Bridge over Piasasaw Creek Overflow (PCO)

Location:

Datum: NGVD
Elevation: 957.89 ft
North: 2894225.20 ft
East: 891873.96 ft
Station: 89+58
Offset: 14' RT



Wang Engineering, Inc.
Consulting Geotechnical and Environmental Engineers
wangeng3@wangeng.com
1145 N. Main Street
Lombard, IL 60148
Telephone: 630 953-9928
Fax: 630 953-9938

BORING LOG OB-04

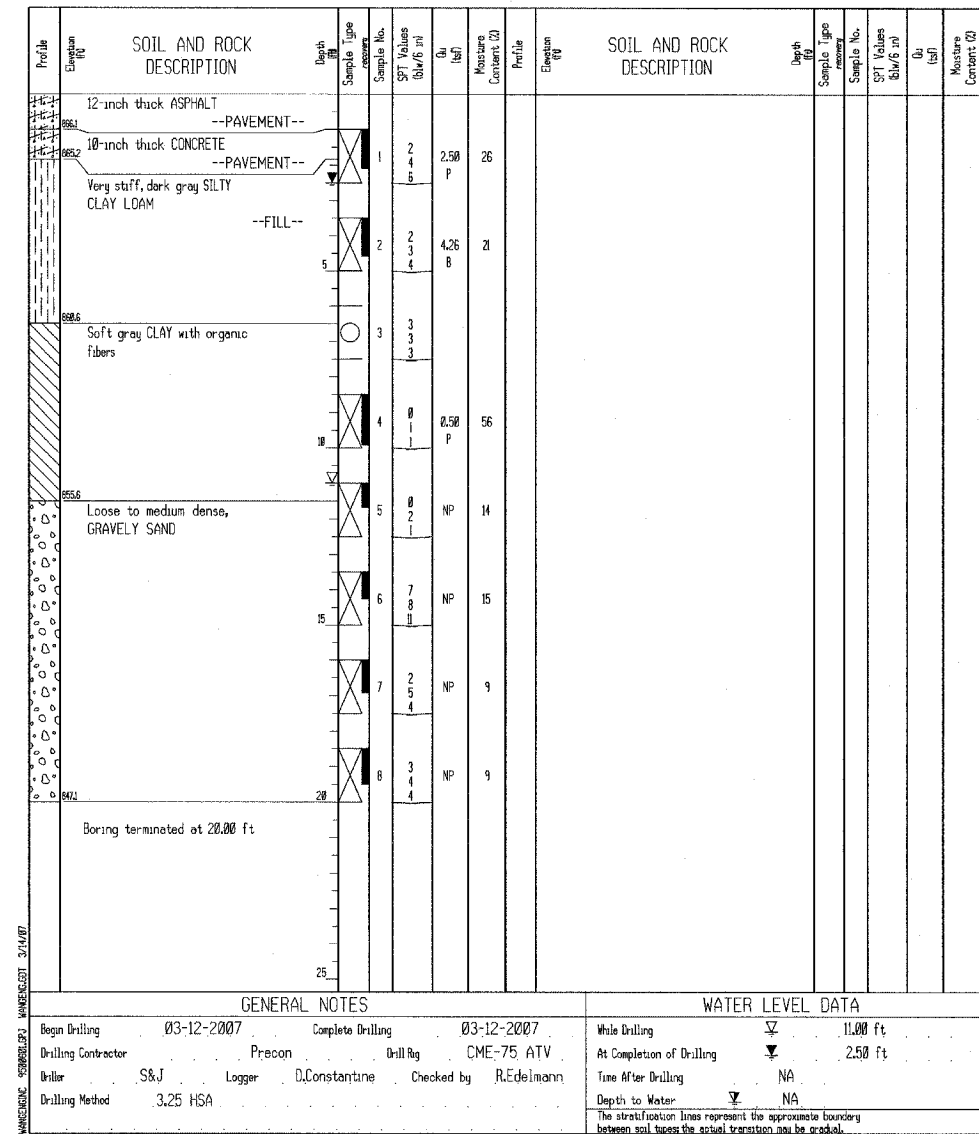
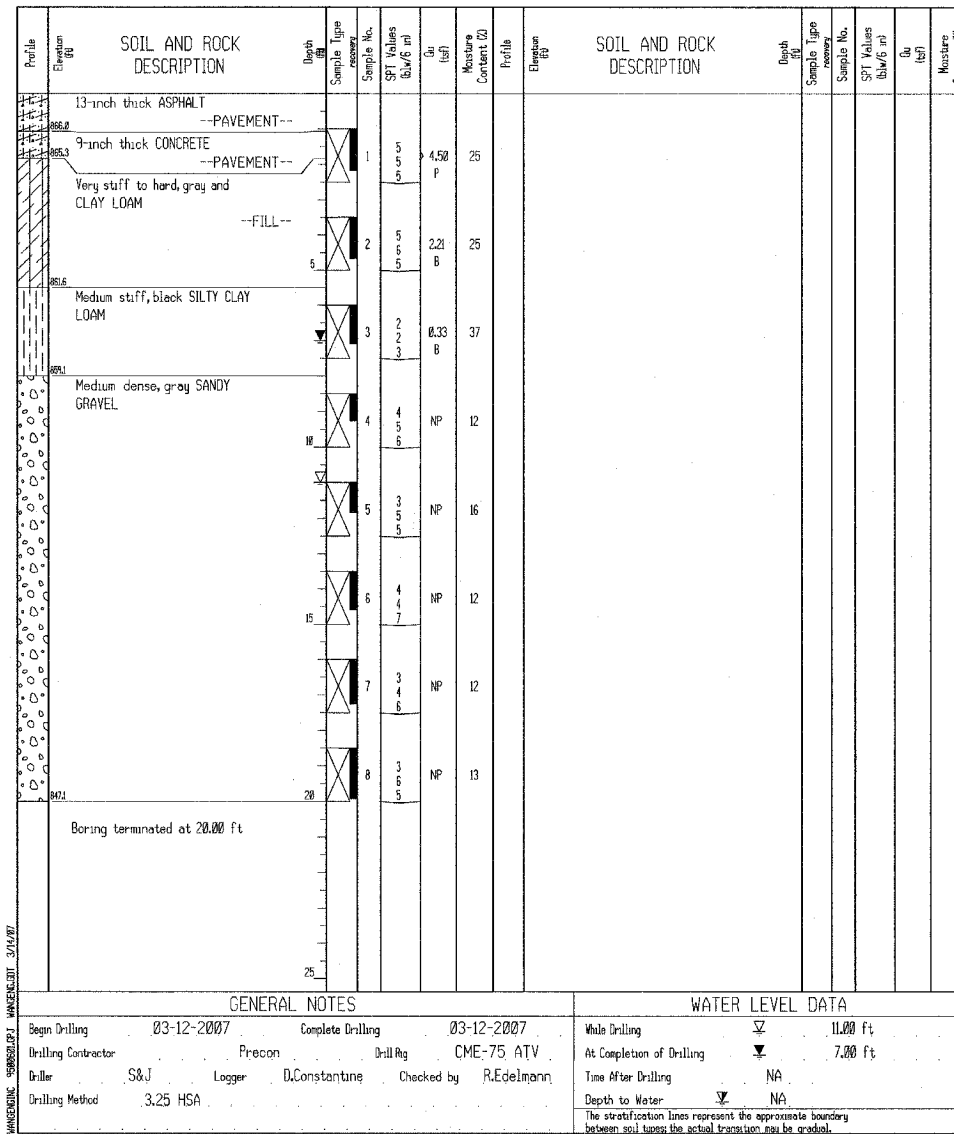
WEI Job No.: 950-06-01

Client: Christian-Roge & Associates, Inc.

Project: IL-173 Bridge over Piasasaw Creek Overflow (PCO)

Location:

Datum: NGVD
Elevation: 957.89 ft
North: 2894225.20 ft
East: 891999.16 ft
Station: 90+66
Offset: 15' RT



REVISIONS	
NAME	DATE

ILLINOIS DEPARTMENT OF TRANSPORTATION

SOIL BORING LOGS-II
OVER
IL. RTE. 173
OVER
PISCASAW CREEK OVERFLOW
F.A.P. RTE. 303 SECTION: 131B(1&2)BR
McHENRY COUNTY STATION 90+20.80
STRUCTURE NO. 056-0089

SCALE: DRAWN BY: D.L./F.M.
DATE: APRIL 13, 2007 CHECKED BY: B.N.S./J.C.N.

CHRISTIAN-ROGE & ASSOC., INC.
CHICAGO ILLINOIS

I:\2007\04\13\2007_04_13_01.dwg 4/13/2007 3:45:01 PM