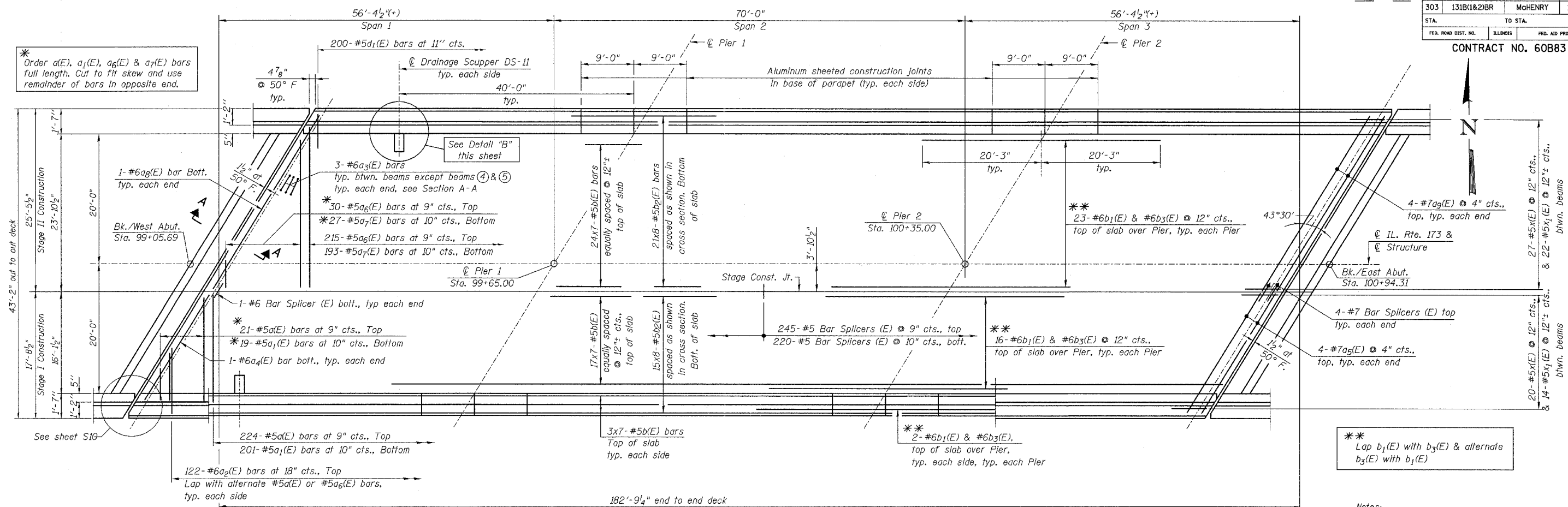


CONTRACT NO. 60B83



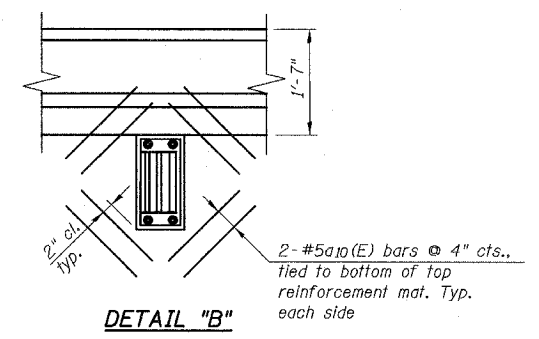
PLAN

\*\* Lap  $b_1(E)$  with  $b_3(E)$  & alternate  $b_3(E)$  with  $b_1(E)$

Notes:  
 See sheet S08 for Superstructure details and Bill of Material.  
 See sheet S08 for Parapet reinforcement.  
 See sheet S08 for Section A-A.  
 Bars indicated thus 3x7-#5 etc., indicate 3 lines of bars with 7 lengths per line.

MINIMUM BAR LAP

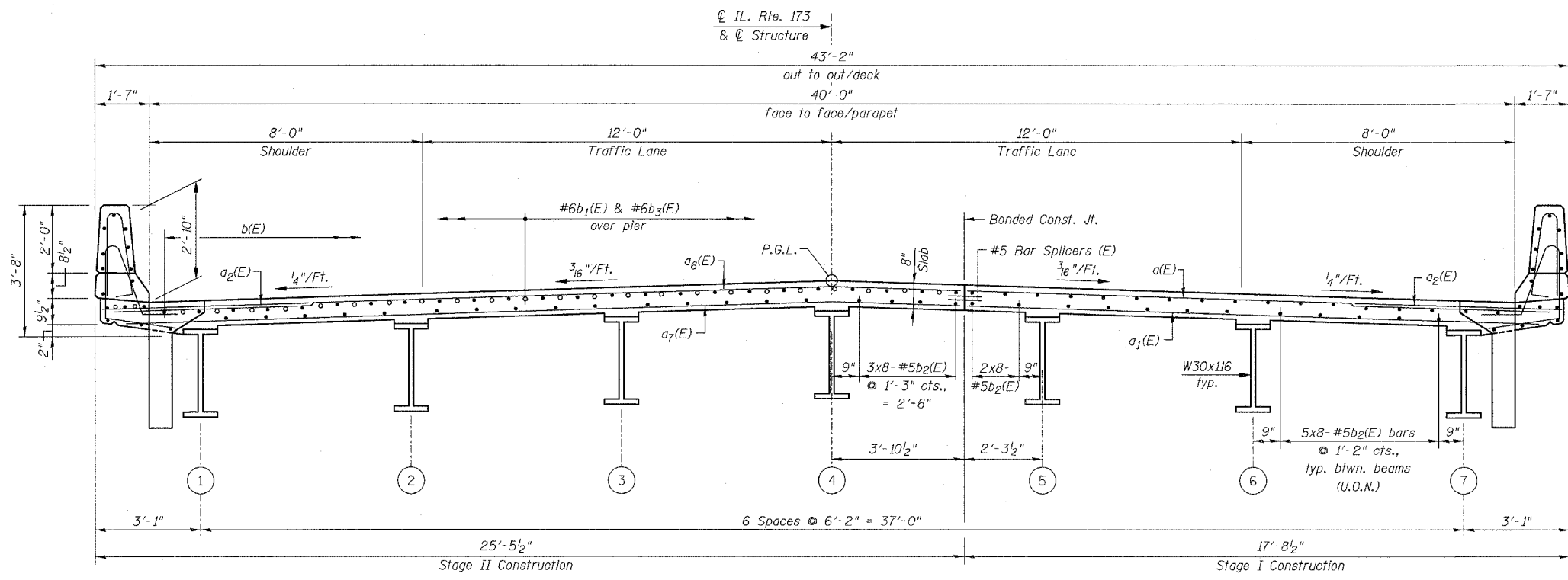
#5 bar = 2'-2"  
 #6 bar = 2'-7"



DETAIL "B"

Note:  
 For remainder of detail, see Section Thru Parapet, see sheet S08.

Note:  
 Cut longitudinal reinforcement to clear drainage scuppers



DECK CROSS SECTION (LOOKING EAST)

ILLINOIS DEPARTMENT OF TRANSPORTATION

DECK PLAN & CROSS SECTION  
 IL. RTE. 173  
 OVER  
 PISCASAW CREEK  
 F.A.P. RTE. 303 SECTION: 131B(1&2)BR  
 McHENRY COUNTY STATION 100+00.00  
 STRUCTURE NO. 056-0090

REVISIONS	NAME	DATE

SCALE: DATE: APRIL 2, 2007  
 DRAWN BY: D.L./F.M.  
 CHECKED BY: B.N.S./J.C.N.  
 CHRISTIAN-ROGE & ASSOC., INC.  
 CHICAGO ILLINOIS

4/13/2007 2:23:18 PM