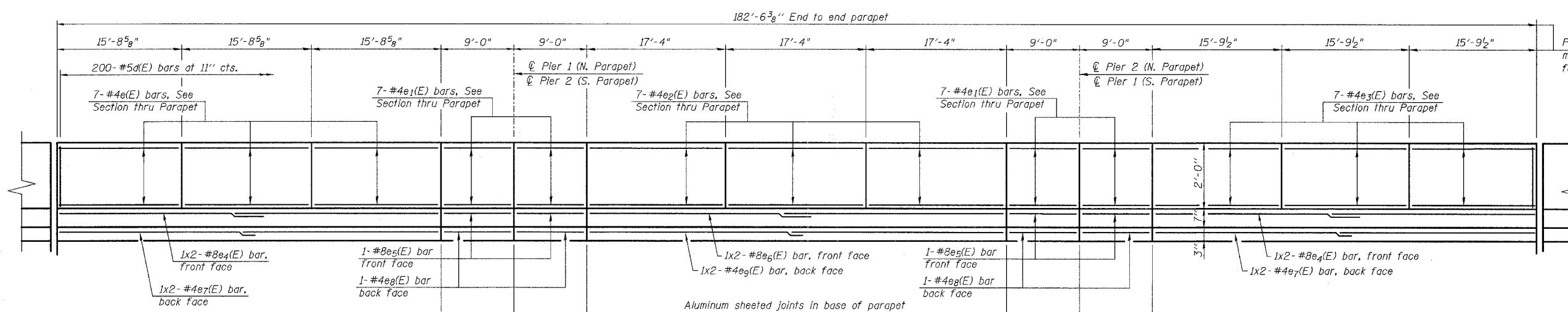


CONTRACT NO. 60B83

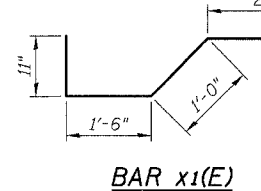
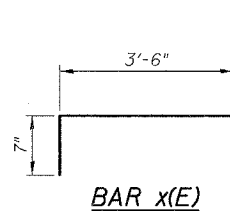
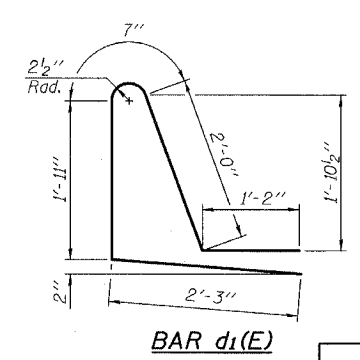
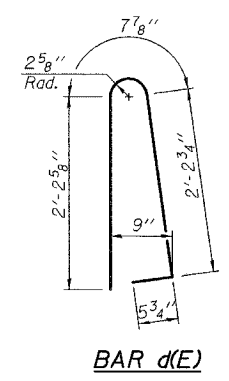
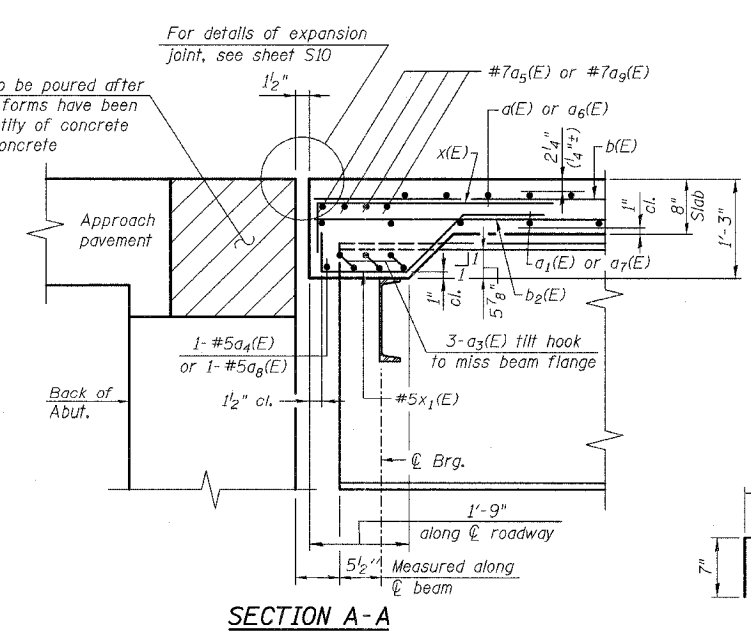
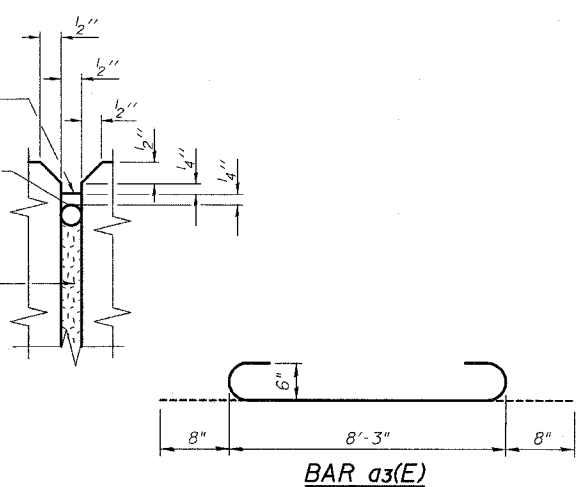
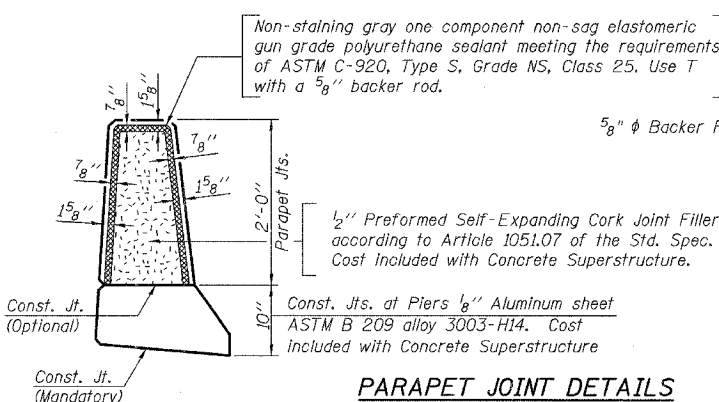
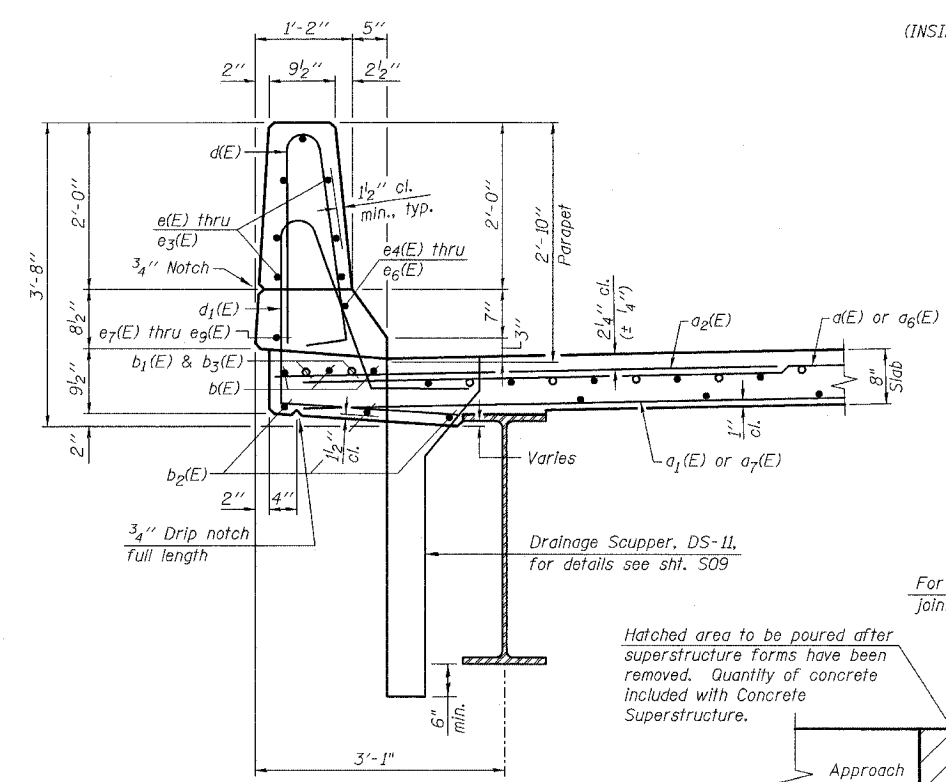


INSIDE ELEVATION OF NORTH PARAPET
(LOOKING NORTH)
(INSIDE FACE OF SOUTH PARAPET OPPOSITE HAND)

MINIMUM BAR LAP
(Parapet)
#4 bar = 1'-4"
#8 bar = 3'-5"

SUPERSTRUCTURE BILL OF MATERIAL

Bar	No.	Size	Length	Shape
a(E)	245	#5	17'-2"	—
a ₁ (E)	220	#5	16'-10"	—
a ₂ (E)	122	#6	6'-0"	—
a ₃ (E)	30	#6	9'-7"	—
a ₄ (E)	2	#6	23'-7"	—
a ₅ (E)	8	#7	23'-10"	—
a ₆ (E)	245	#5	24'-11"	—
a ₇ (E)	220	#5	24'-7"	—
a ₈ (E)	2	#6	34'-3"	—
a ₉ (E)	8	#7	34'-6"	—
a ₁₀ (E)	16	#5	1'-6"	—
b(E)	329	#5	27'-11"	—
b ₁ (E)	86	#6	30'-0"	—
b ₂ (E)	288	#5	24'-9"	—
b ₃ (E)	86	#6	13'-1"	—
d(E)	400	#5	5'-7"	—
d ₁ (E)	400	#5	7'-11"	—
e(E)	42	#4	15'-4"	—
e ₁ (E)	56	#4	8'-8"	—
e ₂ (E)	42	#4	17'-0"	—
e ₃ (E)	42	#4	15'-5"	—
e ₄ (E)	8	#8	25'-3"	—
e ₅ (E)	8	#8	8'-8"	—
e ₆ (E)	4	#8	27'-7"	—
e ₇ (E)	8	#4	24'-3"	—
e ₈ (E)	8	#4	8'-8"	—
e ₉ (E)	4	#4	26'-6"	—
x(E)	94	#5	4'-1"	—
x ₁ (E)	72	#5	5'-11"	—
Bar Splicers	Each		475	
Reinforcement Bars, Epoxy Coated	Pound		54,930	
Concrete Superstructure	Cu. Yds.		243.5	
Protective Coat	Sq. Yds.		966	
Bridge Deck Grooving	Sq. Yds.		772	



ILLINOIS DEPARTMENT OF TRANSPORTATION

PARAPETS, DECK DETAILS & SUPERSTRUCTURE BILL OF MATERIAL
IL. RTE. 173 OVER
PISCASAW CREEK
F.A.P. RTE. 303 SECTION: 131B(1&2)BR
McHENRY COUNTY STATION 100+00.00
STRUCTURE NO. 056-0090

SCALE: DATE: APRIL 2, 2007 DRAWN BY: D.L./F.M. CHECKED BY: B.N.S./J.C.N.

CHRISTIAN-ROGE & ASSOC., INC.
CHICAGO ILLINOIS

REVISIONS	
NAME	DATE