

Bar	No.	Size	Length	Shape
h(E)	6	#5	21'-11"	
h1(E)	10	#5	7'-11"	
h2(E)	10	#5	7'-11"	
h3(E)	10	#4	12'-5"	
h4(E)	12	#4	11'-3"	
h5(E)	5	#6	21'-11"	
h6(E)	6	#5	32'-8"	
h7(E)	5	#6	32'-8"	
h8(E)	10	#4	9'-8"	
n(E)	22	#6	11'-4"	
n1(E)	12	#6	5'-8"	
p(E)	3	#7	22'-3"	
p1(E)	2	#7	24'-6"	
p2(E)	3	#7	26'-9"	
p3(E)	3	#7	34'-10"	
p4(E)	2	#7	34'-3"	
p5(E)	3	#7	32'-0"	
p6(E)	1	#5	18'-5"	
p7(E)	1	#5	16'-3"	
p8(E)	12	#7	11'-6"	
s(E)	55	#4	15'-11"	
s1(E)	26	#4	9'-5"	
s2(E)	5	#4	19'-5"	
u(E)	4	#6	11'-3"	
u1(E)	4	#6	10'-5"	
v(E)	57	#5	3'-1"	
v1(E)	57	#4	3'-0"	
v2(E)	25	#6	5'-10"	
v3(E)	6	#6	5'-10"	
v4(E)	18	#6	5'-10"	
v5(E)	57	#4	3'-7"	
v6(E)	57	#4	4'-9"	

Structure	Quantity	Unit	Value
Structure Excavation	Cu. Yd.	117.2	
Concrete Structures	Cu. Yd.	58.5	
Reinforcement Bars, Epoxy Coated	Pound	4,890	
Furnishing Steel Piles, HP 12x53	Foot	832	
Driving Piles	Foot	832	
Test Pile Steel HP 12x53	Each	1	
Bar Splicers	Each	74	
Porous Granular Embankment, Special	Cu. Yd.	66.5	
Pipe Underdrains for Structures, 4"	Foot	91	
Geocomposite Wall Drains	Sq. Yd.	14.4	
Pile Shoes	Each	17	

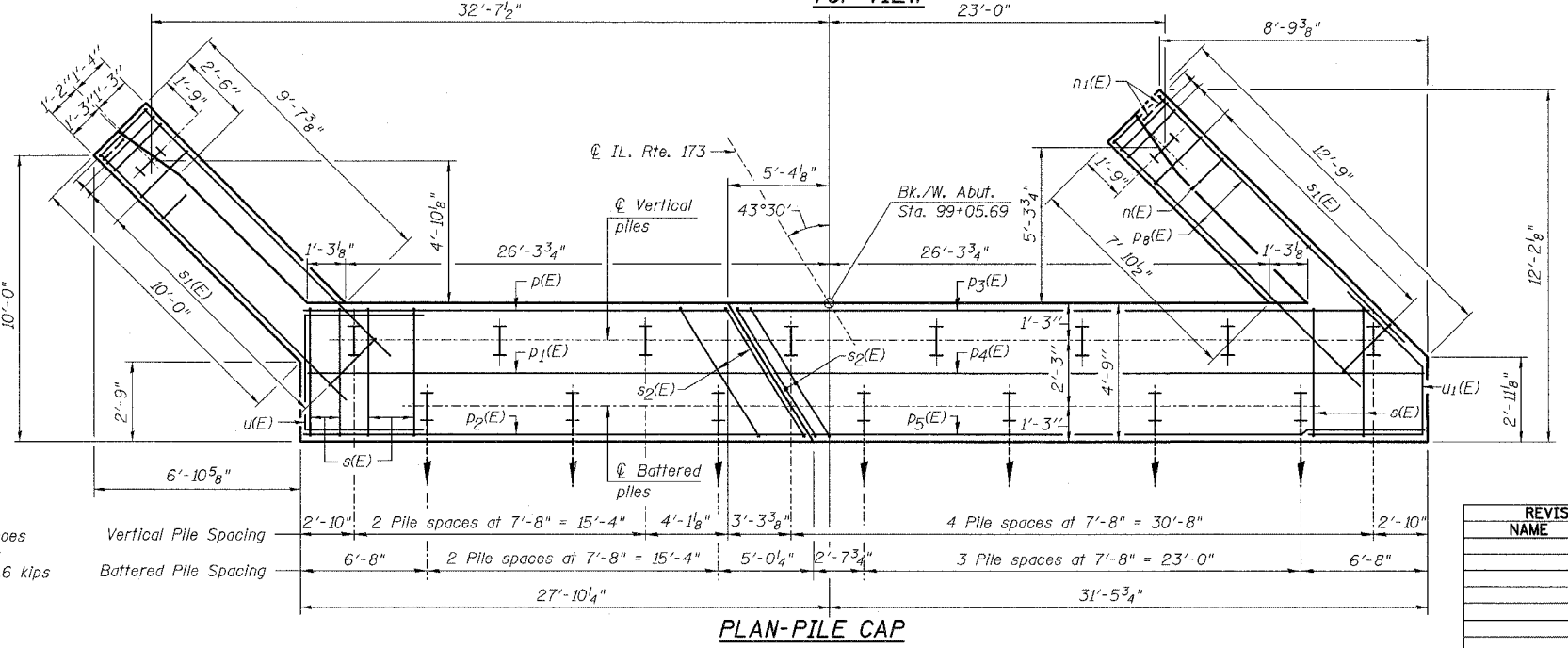
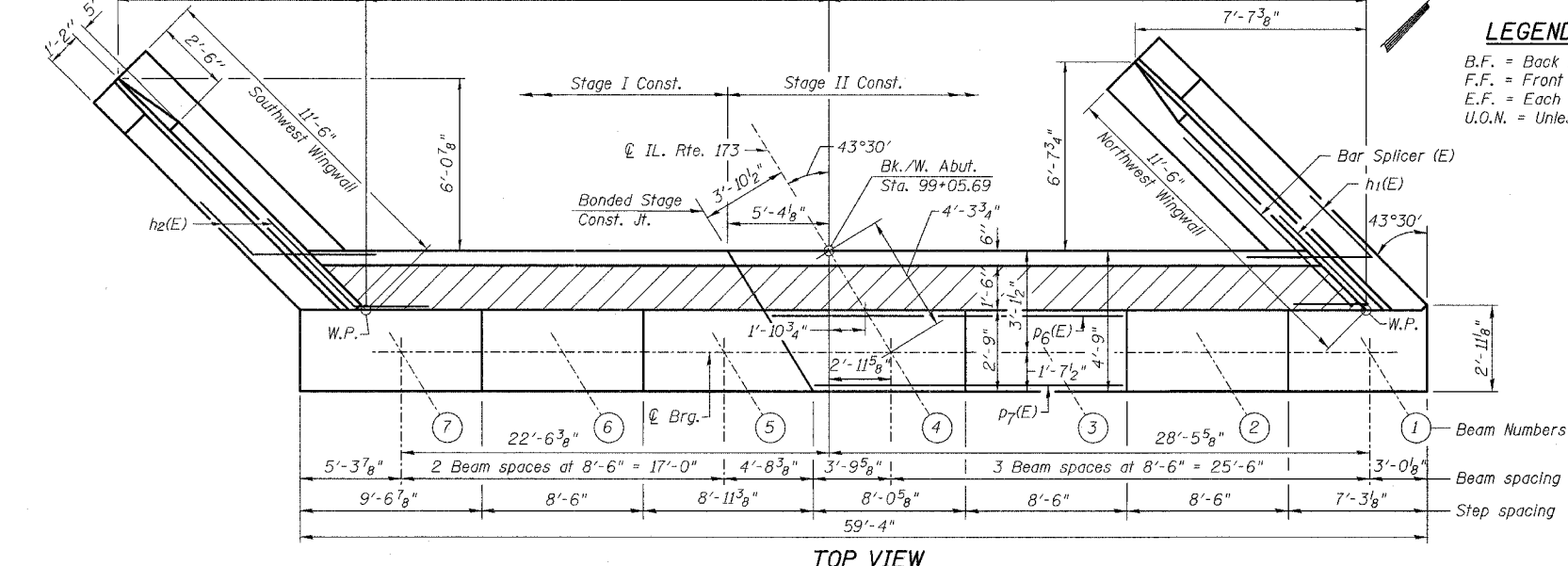
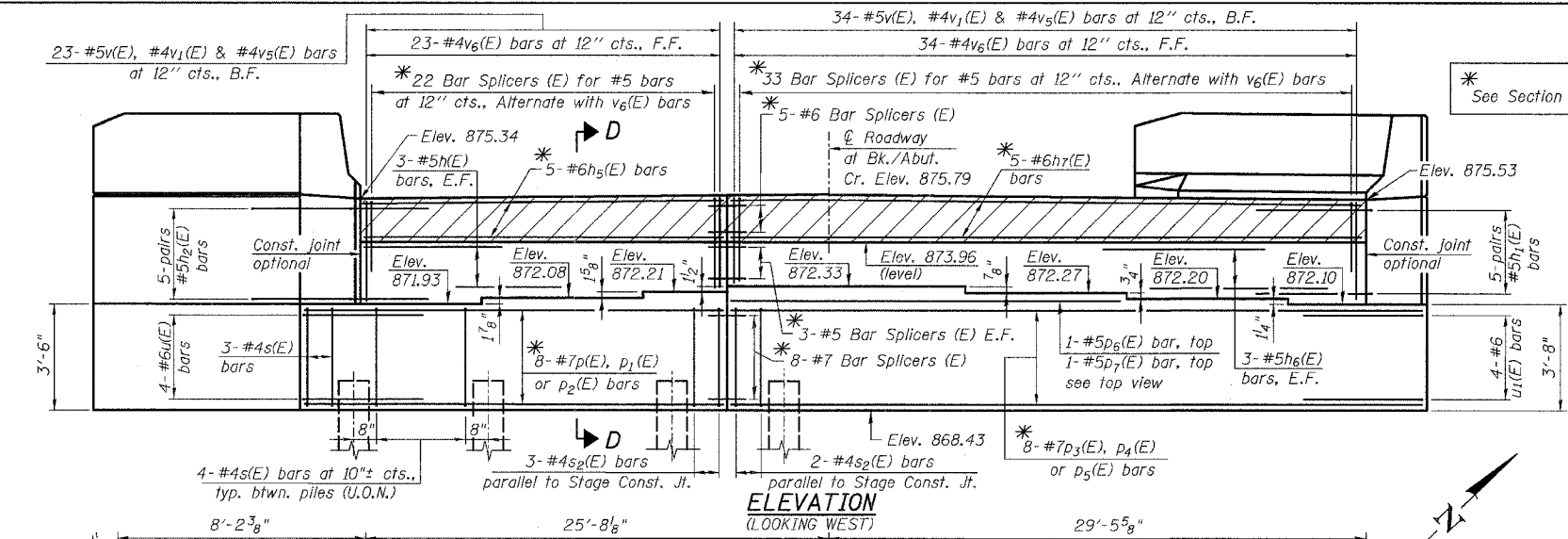
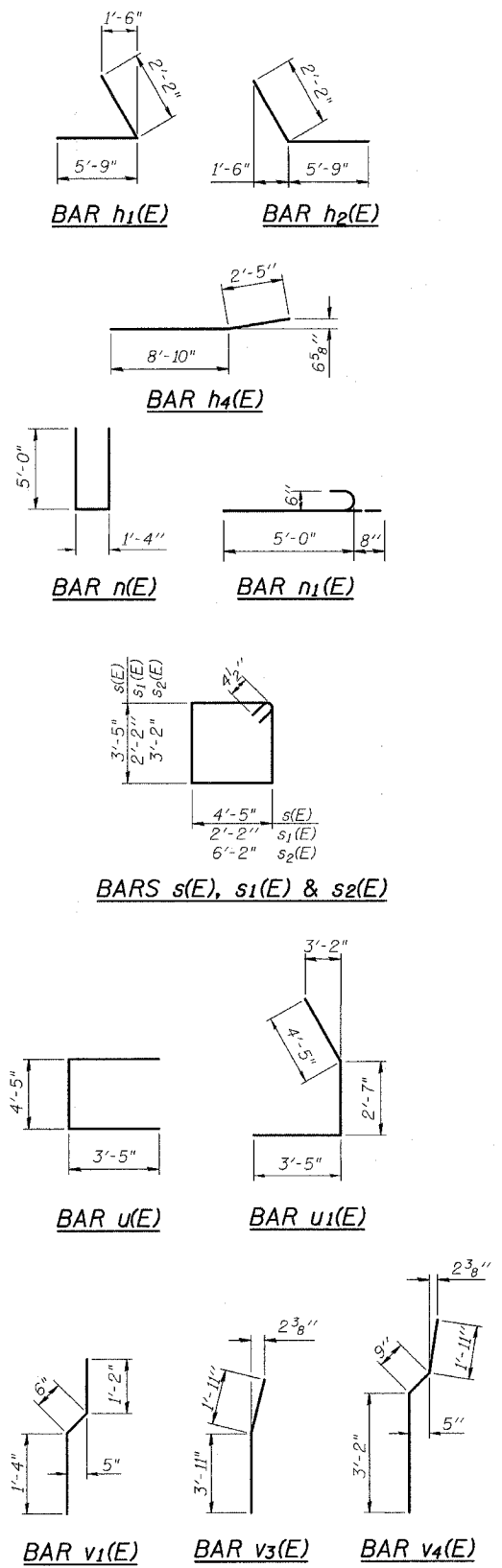
For details of Bar Splicers, see sheet S19
For details of piles see sheet S21
Work this sheet with sheet S15

ILLINOIS DEPARTMENT OF TRANSPORTATION

WEST ABUTMENT
IL. RTE. 173
OVER
PISCASAW CREEK
F.A.P. RTE. 303 SECTION: 131B(1&2)BR
McHENRY COUNTY STATION 100+00.00
STRUCTURE NO. 056-0090

SCALE: DATE: APRIL 2, 2007
DRAWN BY: D.L./F.M.
CHECKED BY: B.N.S./J.C.N.

CHRISTIAN-ROGE & ASSOC., INC.
CHICAGO ILLINOIS



PILE DATA

Type: Steel HP 12x53 with Pile Shoes
Nominal Required Bearing: 419 kips
Factored Resistance Available: 139.6 kips
Est. Length: 52 ft.
No. Production Piles: 16
No. Test Piles: 1

REVISIONS	
NAME	DATE