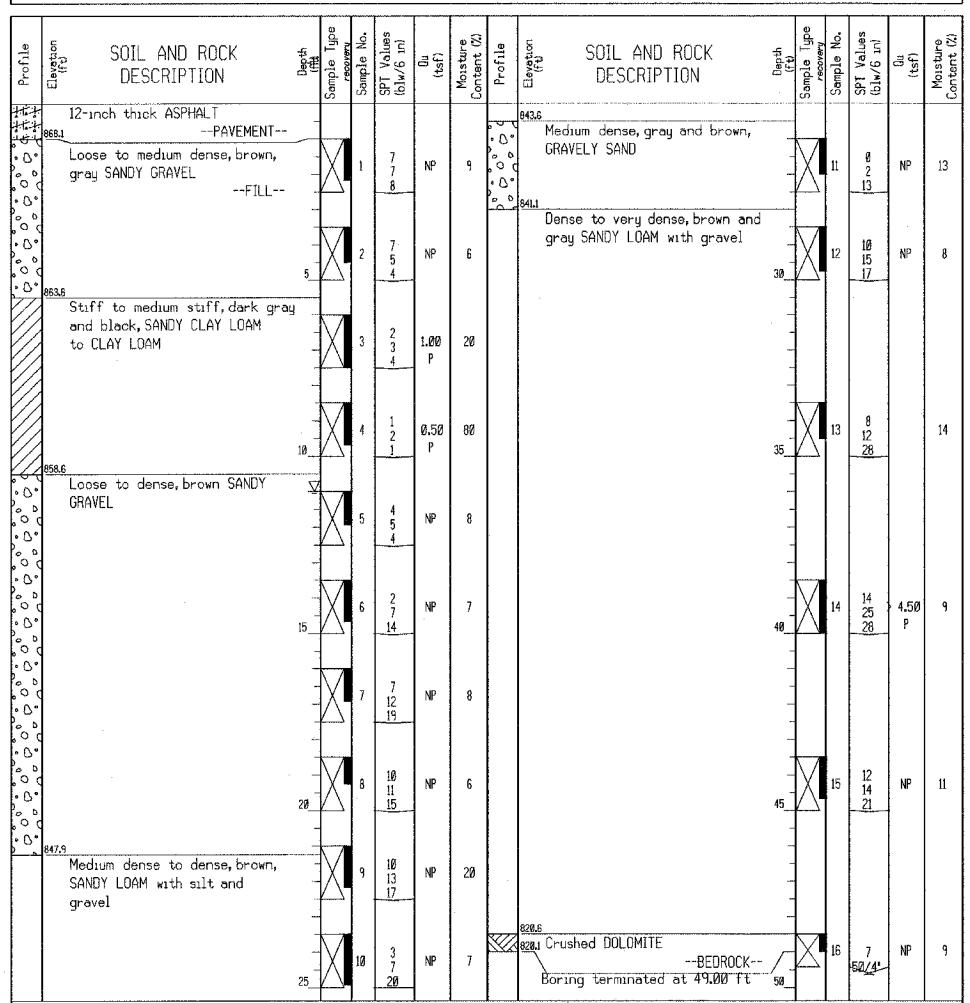


Wang Engineering, Inc.
 Consulting Geotechnical and Environmental Engineers
 wangeng30@wangen.com
 1145 N. Main Street
 Lombard, IL 60148
 Telephone: 630 953-9928
 Fax: 630 953-9938

BORING LOG MB-02
 WEI Job No.: 950-06-01
 Client: Christian-Roge & Associates, Inc.
 Project: IL-173 Bridge over Piscasaw Creek (PCO)
 Location:

Datum: NGVD
 Elevation: 865.14 ft
 North: 2894259.61 ft
 East: 892991.47 ft
 Station: 101+21
 Offset: 6' RT



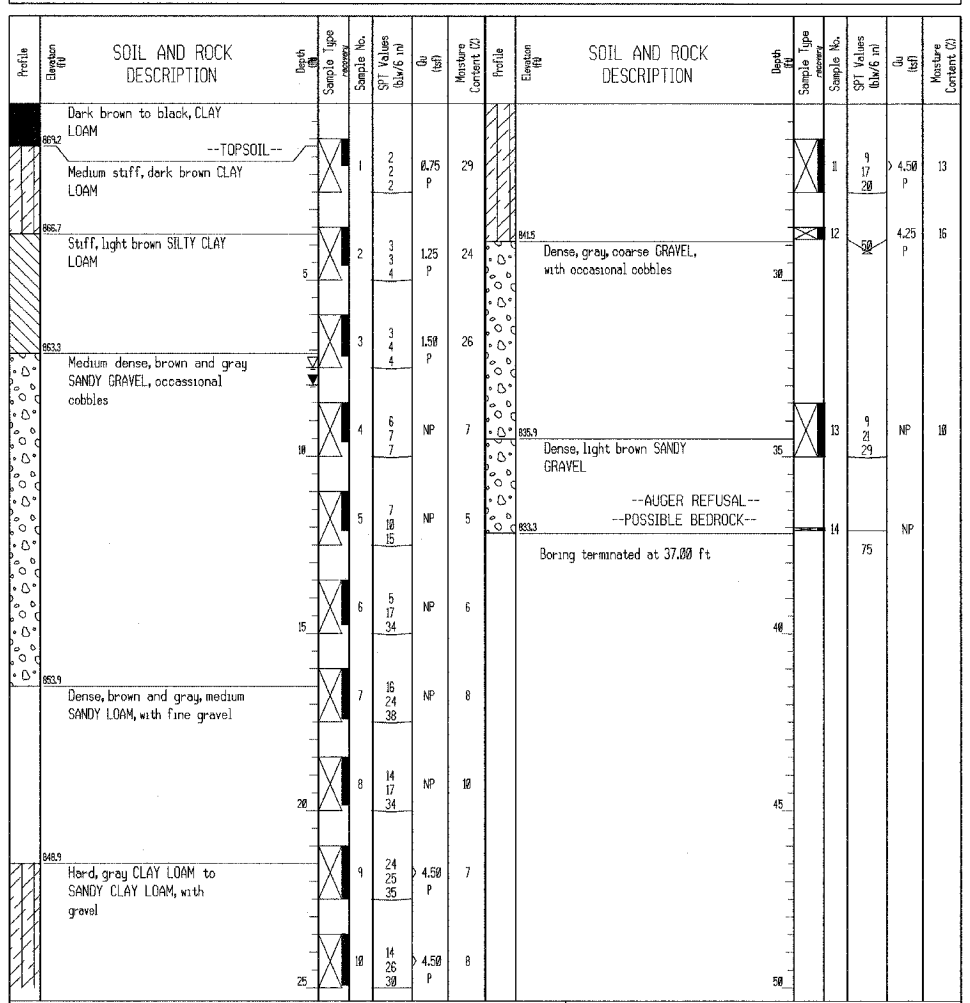
GENERAL NOTES
 Begin Drilling 03-09-2007 Complete Drilling 03-12-2007
 Drilling Contractor Precon Drill Rig CME-75
 Driller S&J Logger D.Constantine Checked by R.Edelman
 Drilling Method 3.25 HSA

WATER LEVEL DATA
 While Drilling 11.00 ft
 At Completion of Drilling
 Time After Drilling NA
 Depth to Water NA
 The stratification lines represent the approximate boundary between soil types; the actual transition may be gradual.

Wang Engineering, Inc.
 Consulting Geotechnical and Environmental Engineers
 wangeng30@wangen.com
 1145 N. Main Street
 Lombard, IL 60148
 Telephone: 630 953-9928
 Fax: 630 953-9938

BORING LOG MB-04
 WEI Job No.: 950-06-01
 Client: Christian-Roge & Associates, Inc.
 Project: IL-173 Bridge over Piscasaw Creek (PCO)
 Location:

Datum: NGVD
 Elevation: 878.42 ft
 North: 2894341.77 ft
 East: 89327.78 ft
 Station: 101+16
 Offset: 88 LT



GENERAL NOTES
 Begin Drilling 01-22-2007 Complete Drilling 01-22-2007
 Drilling Contractor Precon Drill Rig CME-75 ATV
 Driller S&J Logger D.Constantine Checked by E. Datz
 Drilling Method 3.25 HSA

WATER LEVEL DATA
 While Drilling 7.50 ft
 At Completion of Drilling 8.00 ft
 Time After Drilling NA
 Depth to Water NA
 The stratification lines represent the approximate boundary between soil types; the actual transition may be gradual.

Wang Engineering, Inc.
 Consulting Geotechnical and Environmental Engineers
 wangeng30@wangen.com
 1145 N. Main Street
 Lombard, IL 60148
 Telephone: 630 953-9928
 Fax: 630 953-9938

BORING LOG MB-05
 WEI Job No.: 950-06-01
 Client: Christian-Roge & Associates, Inc.
 Project: IL-173 Bridge over Piscasaw Creek (PCO)
 Location:

Datum: NGVD
 Elevation: 865.56 ft
 North: 2894274.86 ft
 East: 892784.24 ft
 Station: 90+75
 Offset: 6' RT

