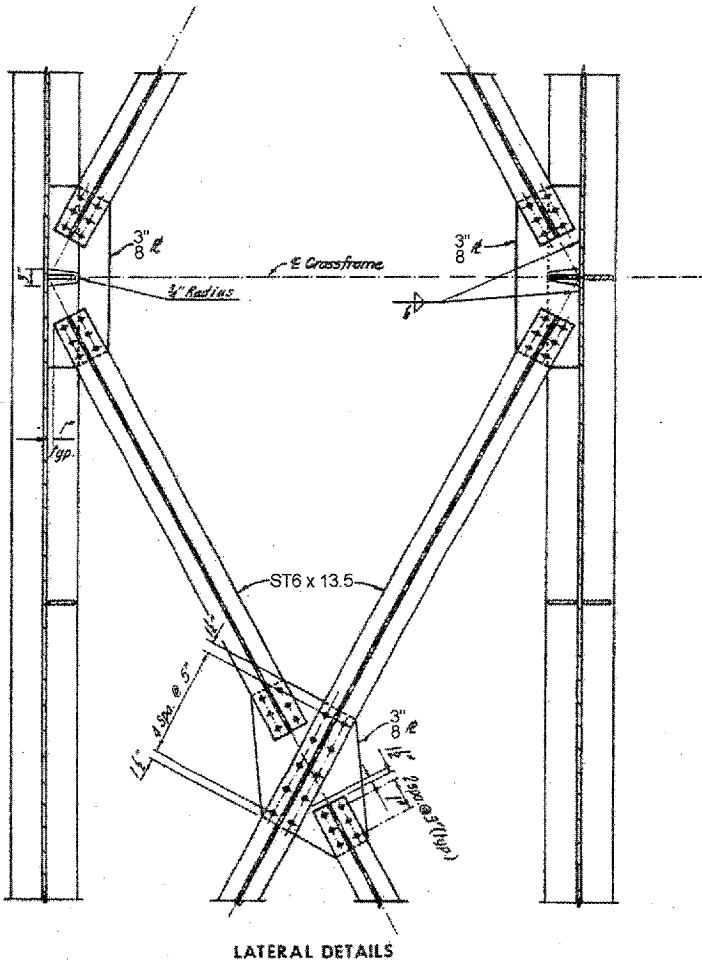
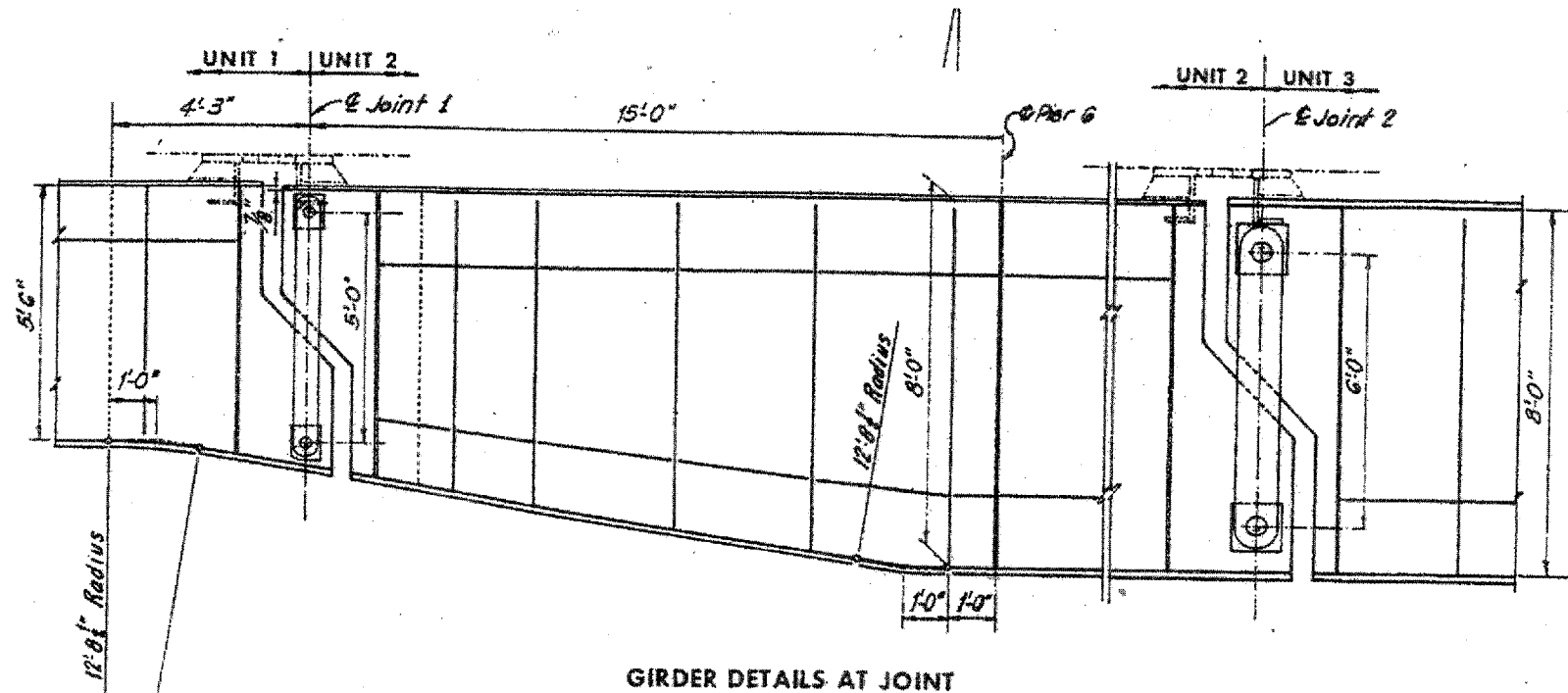
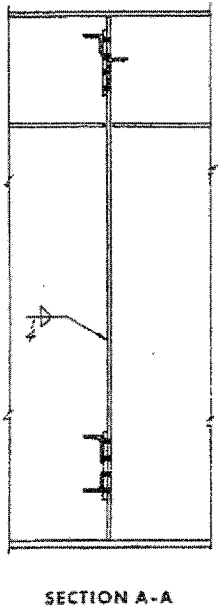
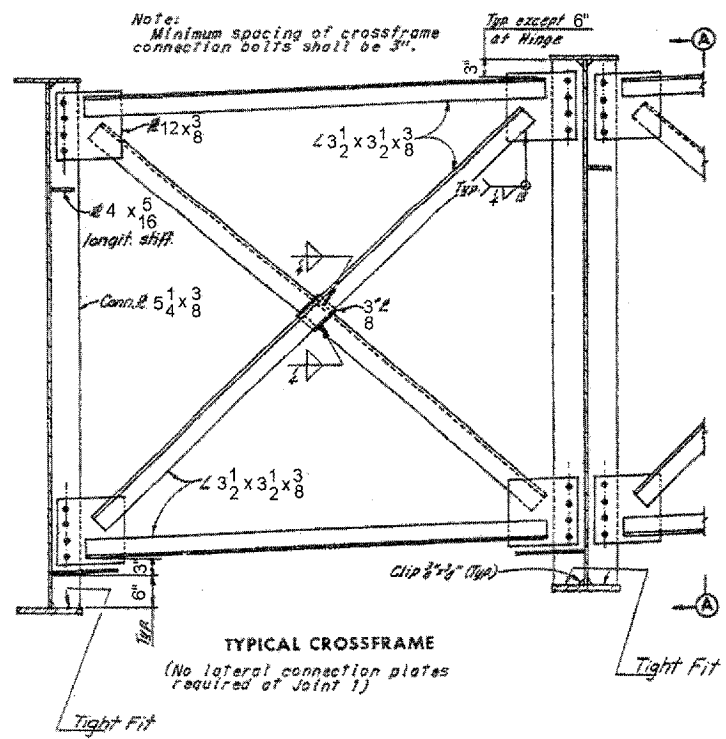


ROUTE	SECTION	COUNTY	TOTAL SHEETS	SHEET NUMBER
FAP 351 & FAU 2831	2006-037BP	COOK & WILL	27	12



ILLINOIS DEPARTMENT OF TRANSPORTATION
 STEEL DETAILS LOCATION 1
 SN: 099-0185 - UNIT 2
 IL-7 OVER DES PLAINES RIVER,
 S&S CANAL & BNSF RR