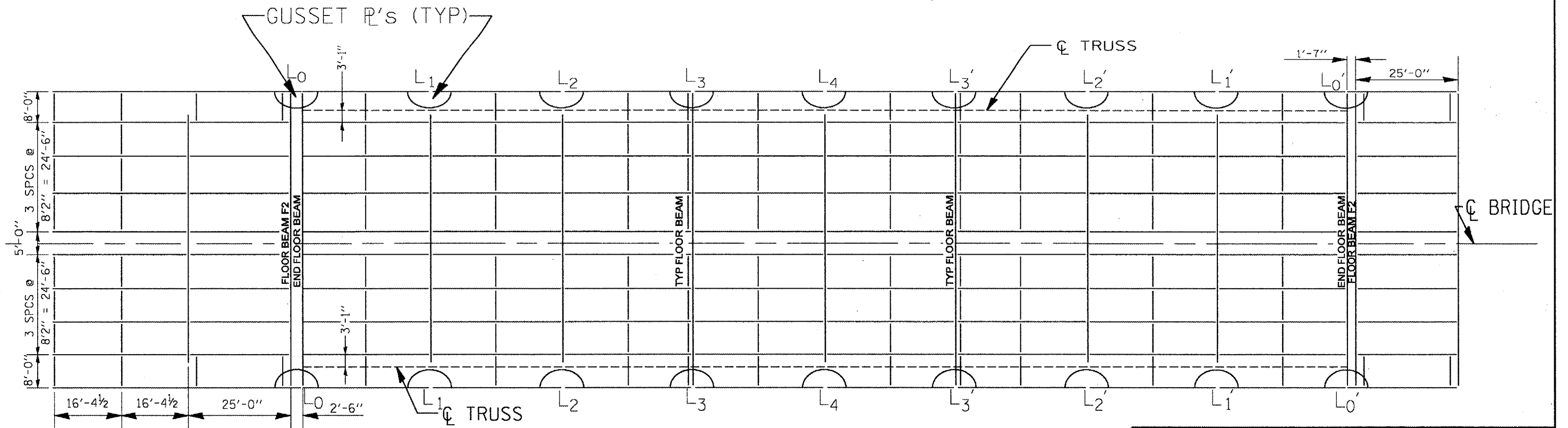
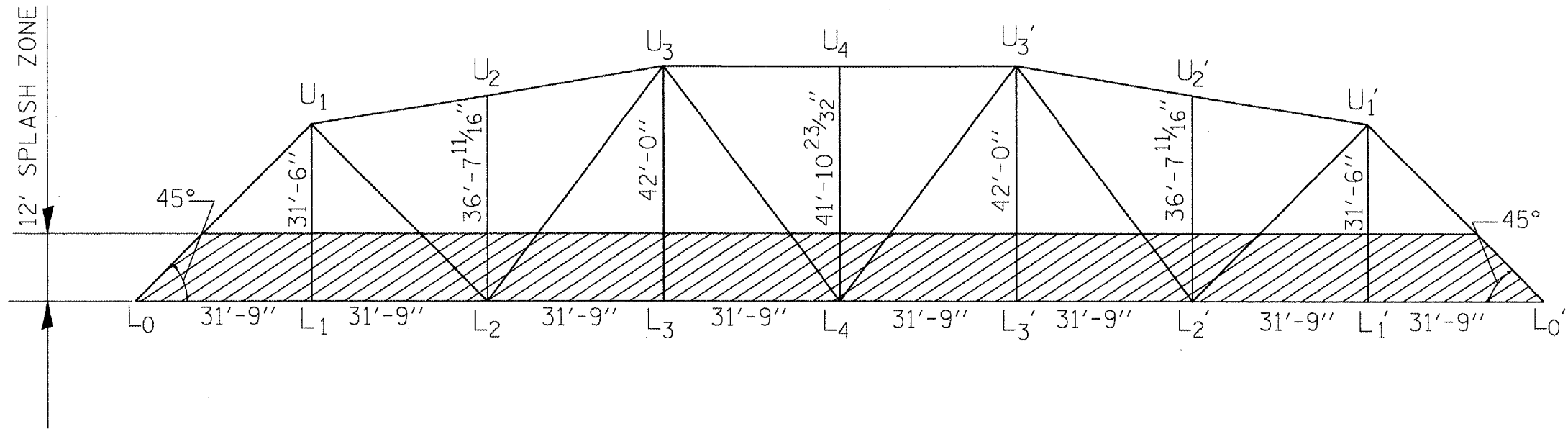


ROUTE	SECTION	COUNTY	TOTAL SHEETS	SHEET NUMBER
FAP 351 & FAU 2831	2006-037BP	COOK & WILL	27	24



JOINTS @ L₀, L₃, L₃' & L₀'

ILLINOIS DEPARTMENT OF TRANSPORTATION
FRAMING PLAN LOCATION 2
 SN: 016-0762
**KEDZIE AVE OVER THE
 CAL-SAG CHANNEL**