

F.A.I. RTE.	SECTION	COUNTY	TOTAL SHEETS	SHEET NO.
59		WILL	102	66
STA.	TO STA.			
FED. ROAD DIST. NO. 1   ILLINOIS   FED. AID PROJECT				
* 26HB-1BR AND 114R-1 CONTRACT NO. 60363				

**BENCHMARKS:**  
TBM#3 Square cut on top of box culvert headwall (near center of the headwall) at the northwest corner of the intersection of Seil Rd. and West Frontage Road. Elev. 591.70

**EXISTING STRUCTURE:**

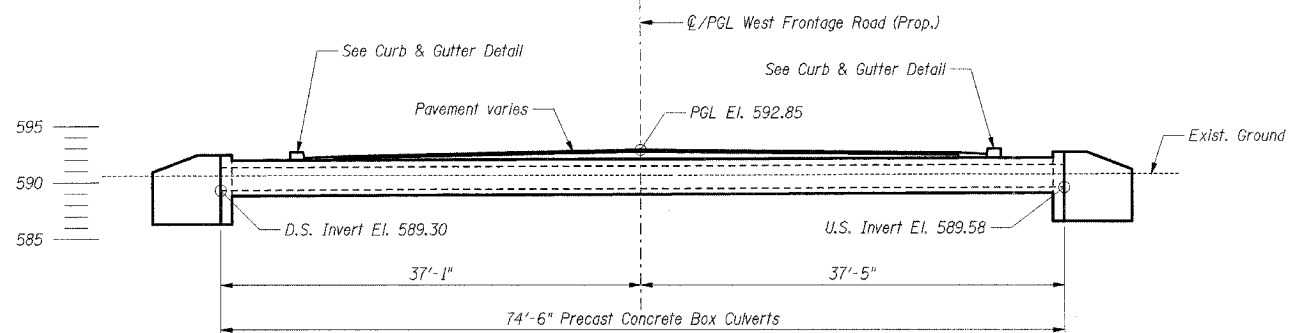
None.

**SALVAGE:**

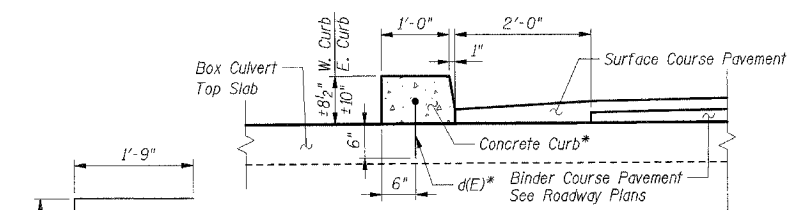
None.

**STAGING:**

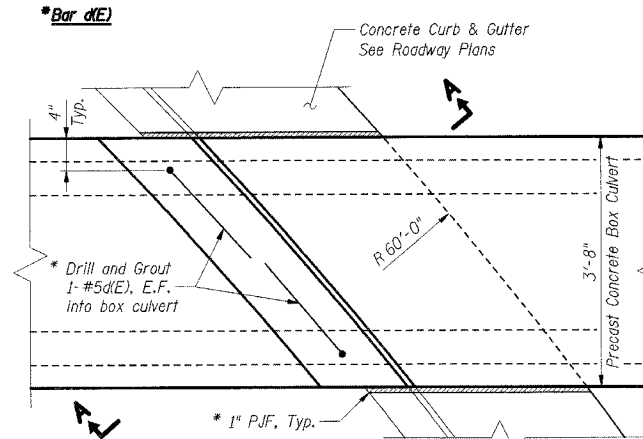
None.



**ELEVATION**



**SECTION A-A**



**CURB & GUTTER DETAIL**

\* Cost of P.J.F., d(E) bars, drilling and grouting, and concrete curb above culvert is included with Box Culvert End Sections, Special.

**DESIGN SPECIFICATIONS:**

1996 AASHTO Standard Specifications for Highway Bridges 1997 thru 2002 Interim Specifications.

**DESIGN SPECIFICATIONS:**

Roadway Live Load: HS20-44  
Future Wearing Surface = 50 psf

**DESIGN STRESSES:**

Concrete:  $F'_c = 5,000$  psi (Precast Box Culverts)  
 $F'_c = 3,500$  psi (Other)  
Reinforcement:  $f_y = 60,000$  psi

**GENERAL NOTES:**

**Cast-in-Place Concrete**  
All exposed concrete edges shall have a  $\frac{3}{4}$ " chamfer unless noted otherwise. Chamfer on vertical edges shall be continued a minimum of one foot below finished ground level.

**Reinforcement Bars**

Reinforcement bars shall conform to the requirements of AASHTO M 31 or M 322 Grade 60.

**Construction**

For backfilling and embankment, see Standard Specifications.

Precast Box Culvert sections shall conform to the requirements of Article 540.06 of the Standard Specifications and the applicable requirements of AASHTO M 273.

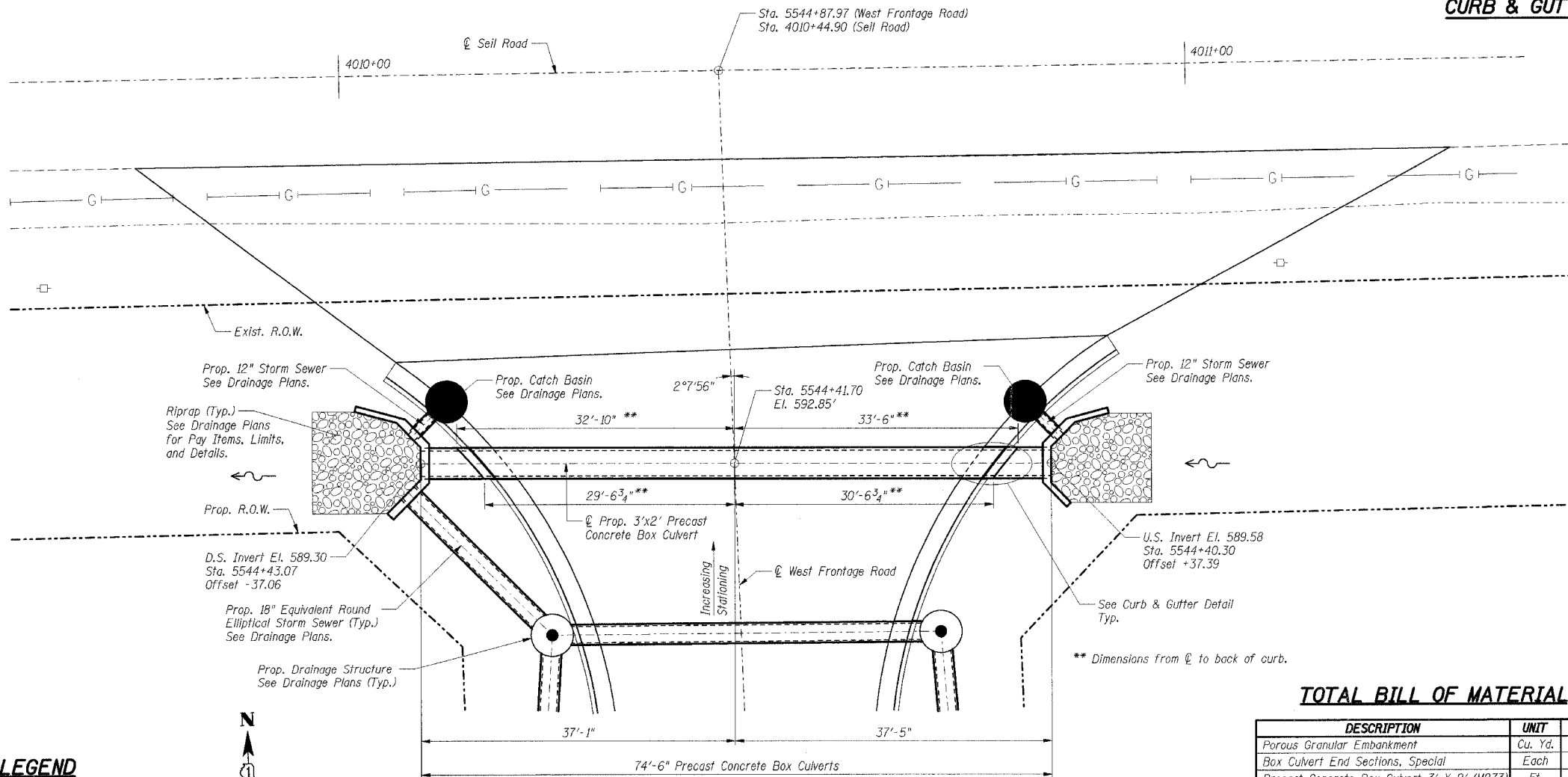
Lifting holes shall be filled with concrete plugs and mastic after box sections are in place.

All construction joints shall be bonded.

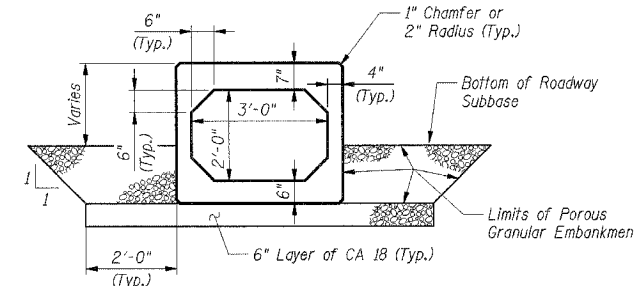
See Sht. BCE-2 for culvert and headwall details.

**INDEX OF SHEETS**

BCE-1 GENERAL PLAN AND ELEVATION  
BCE-2 BOX CULVERT END SECTIONS & DETAILS



**PLAN**



**TYPICAL SECTION**

**TOTAL BILL OF MATERIAL**

DESCRIPTION	UNIT	TOTAL
Porous Granular Embankment	Cu. Yd.	23
Box Culvert End Sections, Special	Each	2
Precast Concrete Box Culvert 3' X 2' (M273)	Ft.	74.5

**SHT. BCE-1 OF BCE-2**

REVISIONS	
NAME	DATE

ILLINOIS DEPARTMENT OF TRANSPORTATION  
F.A.P. ROUTE 338 (ILLINOIS ROUTE 59)  
WEST FRONTAGE ROAD SINGLE BOX CULVERT  
SECTION 26HB-1BR & 114R-1  
STATION 5544+41.70, WILL COUNTY

W. FRONTAGE RD. & SEIL RD. BOX CULVERT  
GENERAL PLAN & ELEVATION

DATE: 3/22/2007  
DRAWN BY: MDB  
CHECKED BY: VCP

**TENG**

TENG & ASSOCIATES, INC.  
ENGINEERS ARCHITECTS INTERIORS  
285 N. MICHIGAN AVE., CHICAGO, IL 60610  
TEL: 312/733-6660

**LEGEND**

—G— Exist. Gas Line  
—□— Exist. Electrical Pole



\...AL\T00\64.DGN, \...S\I\I\0026.DGN, \...D\RA0026.DGN, \...R\ROW026.DGN, \...T\B\0026.DGN, \...Y\B\0026.DGN, \...X\B\0026.DGN, \...Z\B\0026.DGN, \...AA\B\0026.DGN, \...AB\B\0026.DGN, \...AC\B\0026.DGN, \...AD\B\0026.DGN, \...AE\B\0026.DGN, \...AF\B\0026.DGN, \...AG\B\0026.DGN, \...AH\B\0026.DGN, \...AI\B\0026.DGN, \...AJ\B\0026.DGN, \...AK\B\0026.DGN, \...AL\B\0026.DGN, \...AM\B\0026.DGN, \...AN\B\0026.DGN, \...AO\B\0026.DGN, \...AP\B\0026.DGN, \...AQ\B\0026.DGN, \...AR\B\0026.DGN, \...AS\B\0026.DGN, \...AT\B\0026.DGN, \...AU\B\0026.DGN, \...AV\B\0026.DGN, \...AW\B\0026.DGN, \...AX\B\0026.DGN, \...AY\B\0026.DGN, \...AZ\B\0026.DGN, \...BA\B\0026.DGN, \...BB\B\0026.DGN, \...BC\B\0026.DGN, \...BD\B\0026.DGN, \...BE\B\0026.DGN, \...BF\B\0026.DGN, \...BG\B\0026.DGN, \...BH\B\0026.DGN, \...BI\B\0026.DGN, \...BJ\B\0026.DGN, \...BK\B\0026.DGN, \...BL\B\0026.DGN, \...BM\B\0026.DGN, \...BN\B\0026.DGN, \...BO\B\0026.DGN, \...BP\B\0026.DGN, \...BQ\B\0026.DGN, \...BR\B\0026.DGN, \...BS\B\0026.DGN, \...BT\B\0026.DGN, \...BU\B\0026.DGN, \...BV\B\0026.DGN, \...BW\B\0026.DGN, \...BX\B\0026.DGN, \...BY\B\0026.DGN, \...BZ\B\0026.DGN, \...CA\B\0026.DGN, \...CB\B\0026.DGN, \...CC\B\0026.DGN, \...CD\B\0026.DGN, \...CE\B\0026.DGN, \...CF\B\0026.DGN, \...CG\B\0026.DGN, \...CH\B\0026.DGN, \...CI\B\0026.DGN, \...CJ\B\0026.DGN, \...CK\B\0026.DGN, \...CL\B\0026.DGN, \...CM\B\0026.DGN, \...CN\B\0026.DGN, \...CO\B\0026.DGN, \...CP\B\0026.DGN, \...CQ\B\0026.DGN, \...CR\B\0026.DGN, \...CS\B\0026.DGN, \...CT\B\0026.DGN, \...CU\B\0026.DGN, \...CV\B\0026.DGN, \...CW\B\0026.DGN, \...CX\B\0026.DGN, \...CY\B\0026.DGN, \...CZ\B\0026.DGN, \...DA\B\0026.DGN, \...DB\B\0026.DGN, \...DC\B\0026.DGN, \...DD\B\0026.DGN, \...DE\B\0026.DGN, \...DF\B\0026.DGN, \...DG\B\0026.DGN, \...DH\B\0026.DGN, \...DI\B\0026.DGN, \...DJ\B\0026.DGN, \...DK\B\0026.DGN, \...DL\B\0026.DGN, \...DM\B\0026.DGN, \...DN\B\0026.DGN, \...DO\B\0026.DGN, \...DP\B\0026.DGN, \...DQ\B\0026.DGN, \...DR\B\0026.DGN, \...DS\B\0026.DGN, \...DT\B\0026.DGN, \...DU\B\0026.DGN, \...DV\B\0026.DGN, \...DW\B\0026.DGN, \...DX\B\0026.DGN, \...DY\B\0026.DGN, \...DZ\B\0026.DGN, \...EA\B\0026.DGN, \...EB\B\0026.DGN, \...EC\B\0026.DGN, \...ED\B\0026.DGN, \...EE\B\0026.DGN, \...EF\B\0026.DGN, \...EG\B\0026.DGN, \...EH\B\0026.DGN, \...EI\B\0026.DGN, \...EJ\B\0026.DGN, \...EK\B\0026.DGN, \...EL\B\0026.DGN, \...EM\B\0026.DGN, \...EN\B\0026.DGN, \...EO\B\0026.DGN, \...EP\B\0026.DGN, \...EQ\B\0026.DGN, \...ER\B\0026.DGN, \...ES\B\0026.DGN, \...ET\B\0026.DGN, \...EU\B\0026.DGN, \...EV\B\0026.DGN, \...EW\B\0026.DGN, \...EX\B\0026.DGN, \...EY\B\0026.DGN, \...EZ\B\0026.DGN, \...FA\B\0026.DGN, \...FB\B\0026.DGN, \...FC\B\0026.DGN, \...FD\B\0026.DGN, \...FE\B\0026.DGN, \...FF\B\0026.DGN, \...FG\B\0026.DGN, \...FH\B\0026.DGN, \...FI\B\0026.DGN, \...FJ\B\0026.DGN, \...FK\B\0026.DGN, \...FL\B\0026.DGN, \...FM\B\0026.DGN, \...FN\B\0026.DGN, \...FO\B\0026.DGN, \...FP\B\0026.DGN, \...FQ\B\0026.DGN, \...FR\B\0026.DGN, \...FS\B\0026.DGN, \...FT\B\0026.DGN, \...FU\B\0026.DGN, \...FV\B\0026.DGN, \...FW\B\0026.DGN, \...FX\B\0026.DGN, \...FY\B\0026.DGN, \...FZ\B\0026.DGN, \...GA\B\0026.DGN, \...GB\B\0026.DGN, \...GC\B\0026.DGN, \...GD\B\0026.DGN, \...GE\B\0026.DGN, \...GF\B\0026.DGN, \...GG\B\0026.DGN, \...GH\B\0026.DGN, \...GI\B\0026.DGN, \...GJ\B\0026.DGN, \...GK\B\0026.DGN, \...GL\B\0026.DGN, \...GM\B\0026.DGN, \...GN\B\0026.DGN, \...GO\B\0026.DGN, \...GP\B\0026.DGN, \...GQ\B\0026.DGN, \...GR\B\0026.DGN, \...GS\B\0026.DGN, \...GT\B\0026.DGN, \...GU\B\0026.DGN, \...GV\B\0026.DGN, \...GW\B\0026.DGN, \...GX\B\0026.DGN, \...GY\B\0026.DGN, \...GZ\B\0026.DGN, \...HA\B\0026.DGN, \...HB\B\0026.DGN, \...HC\B\0026.DGN, \...HD\B\0026.DGN, \...HE\B\0026.DGN, \...HF\B\0026.DGN, \...HG\B\0026.DGN, \...HH\B\0026.DGN, \...HI\B\0026.DGN, \...HJ\B\0026.DGN, \...HK\B\0026.DGN, \...HL\B\0026.DGN, \...HM\B\0026.DGN, \...HN\B\0026.DGN, \...HO\B\0026.DGN, \...HP\B\0026.DGN, \...HQ\B\0026.DGN, \...HR\B\0026.DGN, \...HS\B\0026.DGN, \...HT\B\0026.DGN, \...HU\B\0026.DGN, \...HV\B\0026.DGN, \...HW\B\0026.DGN, \...HX\B\0026.DGN, \...HY\B\0026.DGN, \...HZ\B\0026.DGN, \...IA\B\0026.DGN, \...IB\B\0026.DGN, \...IC\B\0026.DGN, \...ID\B\0026.DGN, \...IE\B\0026.DGN, \...IF\B\0026.DGN, \...IG\B\0026.DGN, \...IH\B\0026.DGN, \...II\B\0026.DGN, \...IJ\B\0026.DGN, \...IK\B\0026.DGN, \...IL\B\0026.DGN, \...IM\B\0026.DGN, \...IN\B\0026.DGN, \...IO\B\0026.DGN, \...IP\B\0026.DGN, \...IQ\B\0026.DGN, \...IR\B\0026.DGN, \...IS\B\0026.DGN, \...IT\B\0026.DGN, \...IU\B\0026.DGN, \...IV\B\0026.DGN, \...IW\B\0026.DGN, \...IX\B\0026.DGN, \...IY\B\0026.DGN, \...IZ\B\0026.DGN, \...JA\B\0026.DGN, \...JB\B\0026.DGN, \...JC\B\0026.DGN, \...JD\B\0026.DGN, \...JE\B\0026.DGN, \...JF\B\0026.DGN, \...JG\B\0026.DGN, \...JH\B\0026.DGN, \...JI\B\0026.DGN, \...JJ\B\0026.DGN, \...JK\B\0026.DGN, \...JL\B\0026.DGN, \...JM\B\0026.DGN, \...JN\B\0026.DGN, \...JO\B\0026.DGN, \...JP\B\0026.DGN, \...JQ\B\0026.DGN, \...JR\B\0026.DGN, \...JS\B\0026.DGN, \...JT\B\0026.DGN, \...JU\B\0026.DGN, \...JV\B\0026.DGN, \...JW\B\0026.DGN, \...JX\B\0026.DGN, \...JY\B\0026.DGN, \...JZ\B\0026.DGN, \...KA\B\0026.DGN, \...KB\B\0026.DGN, \...KC\B\0026.DGN, \...KD\B\0026.DGN, \...KE\B\0026.DGN, \...KF\B\0026.DGN, \...KG\B\0026.DGN, \...KH\B\0026.DGN, \...KI\B\0026.DGN, \...KJ\B\0026.DGN, \...KK\B\0026.DGN, \...KL\B\0026.DGN, \...KM\B\0026.DGN, \...KN\B\0026.DGN, \...KO\B\0026.DGN, \...KP\B\0026.DGN, \...KQ\B\0026.DGN, \...KR\B\0026.DGN, \...KS\B\0026.DGN, \...KT\B\0026.DGN, \...KU\B\0026.DGN, \...KV\B\0026.DGN, \...KW\B\0026.DGN, \...KX\B\0026.DGN, \...KY\B\0026.DGN, \...KZ\B\0026.DGN, \...LA\B\0026.DGN, \...LB\B\0026.DGN, \...LC\B\0026.DGN, \...LD\B\0026.DGN, \...LE\B\0026.DGN, \...LF\B\0026.DGN, \...LG\B\0026.DGN, \...LH\B\0026.DGN, \...LI\B\0026.DGN, \...LJ\B\0026.DGN, \...LK\B\0026.DGN, \...LL\B\0026.DGN, \...LM\B\0026.DGN, \...LN\B\0026.DGN, \...LO\B\0026.DGN, \...LP\B\0026.DGN, \...LQ\B\0026.DGN, \...LR\B\0026.DGN, \...LS\B\0026.DGN, \...LT\B\0026.DGN, \...LU\B\0026.DGN, \...LV\B\0026.DGN, \...LW\B\0026.DGN, \...LX\B\0026.DGN, \...LY\B\0026.DGN, \...LZ\B\0026.DGN, \...MA\B\0026.DGN, \...MB\B\0026.DGN, \...MC\B\0026.DGN, \...MD\B\0026.DGN, \...ME\B\0026.DGN, \...MF\B\0026.DGN, \...MG\B\0026.DGN, \...MH\B\0026.DGN, \...MI\B\0026.DGN, \...MJ\B\0026.DGN, \...MK\B\0026.DGN, \...ML\B\0026.DGN, \...MM\B\0026.DGN, \...MN\B\0026.DGN, \...MO\B\0026.DGN, \...MP\B\0026.DGN, \...MQ\B\0026.DGN, \...MR\B\0026.DGN, \...MS\B\0026.DGN, \...MT\B\0026.DGN, \...MU\B\0026.DGN, \...MV\B\0026.DGN, \...MW\B\0026.DGN, \...MX\B\0026.DGN, \...MY\B\0026.DGN, \...MZ\B\0026.DGN, \...NA\B\0026.DGN, \...NB\B\0026.DGN, \...NC\B\0026.DGN, \...ND\B\0026.DGN, \...NE\B\0026.DGN, \...NF\B\0026.DGN, \...NG\B\0026.DGN, \...NH\B\0026.DGN, \...NI\B\0026.DGN, \...NJ\B\0026.DGN, \...NK\B\0026.DGN, \...NL\B\0026.DGN, \...NM\B\0026.DGN, \...NN\B\0026.DGN, \...NO\B\0026.DGN, \...NP\B\0026.DGN, \...NQ\B\0026.DGN, \...NR\B\0026.DGN, \...NS\B\0026.DGN, \...NT\B\0026.DGN, \...NU\B\0026.DGN, \...NV\B\0026.DGN, \...NW\B\0026.DGN, \...NX\B\0026.DGN, \...NY\B\0026.DGN, \...NZ\B\0026.DGN, \...OA\B\0026.DGN, \...OB\B\0026.DGN, \...OC\B\0026.DGN, \...OD\B\0026.DGN, \...OE\B\0026.DGN, \...OF\B\0026.DGN, \...OG\B\0026.DGN, \...OH\B\0026.DGN, \...OI\B\0026.DGN, \...OJ\B\0026.DGN, \...OK\B\0026.DGN, \...OL\B\0026.DGN, \...OM\B\0026.DGN, \...ON\B\0026.DGN, \...OO\B\0026.DGN, \...OP\B\0026.DGN, \...OQ\B\0026.DGN, \...OR\B\0026.DGN, \...OS\B\0026.DGN, \...OT\B\0026.DGN, \...OU\B\0026.DGN, \...OV\B\0026.DGN, \...OW\B\0026.DGN, \...OX\B\0026.DGN, \...OY\B\0026.DGN, \...OZ\B\0026.DGN, \...PA\B\0026.DGN, \...PB\B\0026.DGN, \...PC\B\0026.DGN, \...PD\B\0026.DGN, \...PE\B\0026.DGN, \...PF\B\0026.DGN, \...PG\B\0026.DGN, \...PH\B\0026.DGN, \...PI\B\0026.DGN, \...PJ\B\0026.DGN, \...PK\B\0026.DGN, \...PL\B\0026.DGN, \...PM\B\0026.DGN, \...PN\B\0026.DGN, \...PO\B\0026.DGN, \...PP\B\0026.DGN, \...PQ\B\0026.DGN, \...PR\B\0026.DGN, \...PS\B\0026.DGN, \...PT\B\0026.DGN, \...PU\B\0026.DGN, \...PV\B\0026.DGN, \...PW\B\0026.DGN, \...PX\B\0026.DGN, \...PY\B\0026.DGN, \...PZ\B\0026.DGN, \...QA\B\0026.DGN, \...QB\B\0026.DGN, \...QC\B\0026.DGN, \...QD\B\0026.DGN, \...QE\B\0026.DGN, \...QF\B\0026.DGN, \...QG\B\0026.DGN, \...QH\B\0026.DGN, \...QI\B\0026.DGN, \...QJ\B\0026.DGN, \...QK\B\0026.DGN, \...QL\B\0026.DGN, \...QM\B\0026.DGN, \...QN\B\0026.DGN, \...QO\B\0026.DGN, \...QP\B\0026.DGN, \...QQ\B\0026.DGN, \...QR\B\0026.DGN, \...QS\B\0026.DGN, \...QT\B\0026.DGN, \...QU\B\0026.DGN, \...QV\B\0026.DGN, \...QW\B\0026.DGN, \...QX\B\0026.DGN, \...QY\B\0026.DGN, \...QZ\B\0026.DGN, \...RA\B\0026.DGN, \...RB\B\0026.DGN, \...RC\B\0026.DGN, \...RD\B\0026.DGN, \...RE\B\0026.DGN, \...RF\B\0026.DGN, \...RG\B\0026.DGN, \...RH\B\0026.DGN, \...RI\B\0026.DGN, \...RJ\B\0026.DGN, \...RK\B\0026.DGN, \...RL\B\0026.DGN, \...RM\B\0026.DGN, \...RN\B\0026.DGN, \...RO\B\0026.DGN, \...RP\B\0026.DGN, \...RQ\B\0026.DGN, \...RR\B\0026.DGN, \...RS\B\0026.DGN, \...RT\B\0026.DGN, \...RU\B\0026.DGN, \...RV\B\0026.DGN, \...RW\B\0026.DGN, \...RX\B\0026.DGN, \...RY\B\0026.DGN, \...RZ\B\0026.DGN, \...SA\B\0026.DGN, \...SB\B\0026.DGN, \...SC\B\0026.DGN, \...SD\B\0026.DGN, \...SE\B\0026.DGN, \...SF\B\0026.DGN, \...SG\B\0026.DGN, \...SH\B\0026.DGN, \...SI\B\0026.DGN, \...SJ\B\0026.DGN, \...SK\B\0026.DGN, \...SL\B\0026.DGN, \...SM\B\0026.DGN, \...SN\B\0026.DGN, \...SO\B\0026.DGN, \...SP\B\0026.DGN, \...SQ\B\0026.DGN, \...SR\B\0026.DGN, \...SS\B\0026.DGN, \...ST\B\0026.DGN, \...SU\B\0026.DGN, \...SV\B\0026.DGN, \...SW\B\0026.DGN, \...SX\B\0026.DGN, \...SY\B\0026.DGN, \...SZ\B\0026.DGN, \...TA\B\0026.DGN, \...TB\B\0026.DGN, \...TC\B\0026.DGN, \...TD\B\0026.DGN, \...TE\B\0026.DGN, \...TF\B\0026.DGN, \...TG\B\0026.DGN, \...TH\B\0026.DGN, \...TI\B\0026.DGN, \...TJ\B\0026.DGN, \...TK\B\0026.DGN, \...TL\B\0026.DGN, \...TM\B\0026.DGN, \...TN\B\0026.DGN, \...TO\B\0026.DGN, \...TP\B\0026.DGN, \...TQ\B\0026.DGN, \...TR\B\0026.DGN, \...TS\B\0026.DGN, \...TT\B\0026.DGN, \...TU\B\0026.DGN, \...TV\B\0026.DGN, \...TW\B\0026.DGN, \...TX\B\0026.DGN, \...TY\B\0026.DGN, \...TZ\B\0026.DGN, \...UA\B\0026.DGN, \...UB\B\0026.DGN, \...UC\B\0026.DGN, \...UD\B\0026.DGN, \...UE\B\0026.DGN, \...UF\B\0026.DGN, \...UG\B\0026.DGN, \...UH\B\0026.DGN, \...UI\B\0026.DGN, \...UJ\B\0026.DGN, \...UK\B\0026.DGN, \...UL\B\0026.DGN, \...UM\B\0026.DGN, \...UN\B\0026.DGN, \...UO\B\0026.DGN, \...UP\B\0026.DGN, \...UQ\B\0026.DGN, \...UR\B\0026.DGN, \...US\B\0026.DGN, \...UT\B\0026.DGN, \...UU\B\0026.DGN, \...UV\B\0026.DGN, \...UW\B\0026.DGN, \...UX\B\0026.DGN, \...UY\B\0026.DGN, \...UZ\B\0026.DGN, \...VA\B\0026.DGN, \...VB\B\0026.DGN, \...VC\B\0026.DGN, \...VD\B\0026.DGN, \...VE\B\0026.DGN, \...VF\B\0026.DGN, \...VG\B\0026.DGN, \...VH\B\0026.DGN, \...VI\B\0026.DGN, \...VJ\B\0026.DGN, \...VK\B\0026.DGN, \...VL\B\0026.DGN, \...VM\B\0026.DGN, \...VN\B\0026.DGN, \...VO\B\0026.DGN, \...VP\B\0026.DGN, \...VQ\B\0026.DGN, \...VR\B\0026.DGN, \...VS\B\0026.DGN, \...VT\B\0026.DGN, \...VU\B\0026.DGN, \...VV\B\0026.DGN, \...VW\B\0026.DGN, \...VX\B\0026.DGN, \...VY\B\0026.DGN, \...VZ\B\0026.DGN, \...WA\B\0026.DGN, \...WB\B\0026.DGN, \...WC\B\0026.DGN, \...WD\B\0026.DGN, \...WE\B\0026.DGN, \...WF\B\0026.DGN, \...WG\B\0026.DGN, \...WH\B\0026.DGN, \...WI\B\0026.DGN, \...WJ\B\0026.DGN, \...WK\B\0026.DGN, \...WL\B\0026.DGN, \...WM\B\0026.DGN, \...WN\B\0026.DGN, \...WO\B\0026.DGN, \...WP\B\0026.DGN, \...WQ\B\0026.DGN, \...WR\B\0026.DGN, \...WS\B\0026.DGN, \...WT\B\0026.DGN, \...WU\B\0026.DGN, \...WV\B\0026.DGN, \...WW\B\0026.DGN, \...WX\B\0026.DGN, \...WY\B\0026.DGN, \...WZ\B\0026.DGN, \...XA\B\0026.DGN, \...XB\B\0026.DGN, \...XC\B\0026.DGN, \...XD\B\0026.DGN, \...XE\B\0026.DGN, \...XF\B\0026.DGN, \...XG\B\0026.DGN, \...XH\B\0026.DGN, \...XI\B\0026.DGN, \...XJ\B\0026.DGN, \...XK\B\0026.DGN, \...XL\B\0026.DGN, \...XM\B\0026.DGN, \...XN\B\0026.DGN, \...XO\B\0026.DGN, \...XP\B\0026.DGN, \...XQ\B\0026.DGN, \...XR\B\0026.DGN, \...XS\B\0026.DGN, \...XT\B\0026.DGN, \...XU\B\0026.DGN, \...XV\B\0026.DGN, \...XW\B\0026.DGN, \...XX\B\0026.DGN, \...XY\B\0026.DGN, \...XZ\B\0026.DGN, \...YA\B\0026.DGN, \...YB\B\0026.DGN, \...YC\B\0026.DGN, \...YD\B\0026.DGN, \...YE\B\0026.DGN, \...YF\B\0026.DGN, \...YG\B\0026.DGN, \...YH