

F.A.P. RTE.	SECTION	COUNTY	TOTAL SHEETS	SHEET NO.
351	537 W-TS	COOK	14	7
STA.		TO STA.		
FED. ROAD DIST. NO.		ILLINOIS	FED. AID PROJECT	

TEMPORARY TRAFFIC SIGNAL AND REMOVAL LEGEND

	PROPOSED	EXISTING		PROPOSED	EXISTING
TEMPORARY CONTROLLER CABINET			G.S. CONDUIT IN TRENCH OR PUSHED		
TEMPORARY SERVICE INSTALLATION, (P) POLE OR (G) GROUND MOUNT			TEMPORARY SPAN WIRE, TETHER WIRE, AND CABLE		
TEMPORARY TRAFFIC SIGNAL HEAD SPAN WIRE MOUNTED ORIGINAL LOCATION			COMMON TRENCH	CT	
TEMPORARY TRAFFIC SIGNAL HEAD SPAN WIRE MOUNTED SECONDARY LOCATION			UNIT DUCT	UD	
TEMPORARY PEDESTRIAN SIGNAL HEAD, BRACKET MOUNTED			TEMPORARY PEDESTRIAN PUSHBUTTON DETECTOR		
TEMPORARY WOOD POLE (CLASS 5 OR BETTER) 45 FOOT (13.7m) MINIMUM			DETECTOR LOOP, TYPE I		
EXISTING SIGNAL POST AND FOUNDATION TO BE REMOVED			PREFORMED DETECTOR LOOP		
STEEL MAST ARM ASSEMBLY AND POLE			MICROWAVE VEHICLE SENSOR		
ALUMINUM MAST ARM ASSEMBLY AND POLE			VIDEO DETECTOR		
COMBINATION MAST ARM ASSEMBLY AND POLE, STEEL WITH LUMINAIRE			CLOSED CIRCUIT TV		
EXISTING STREET LIGHT, FOUNDATION AND LUMINAIRE TO REMAIN			EMERGENCY VEHICLE SYSTEM DETECTOR		
HANDHOLE			CONFIRMATION BEACON		
HEAVY-DUTY HANDHOLE			REMOVAL		
			RELOCATE		

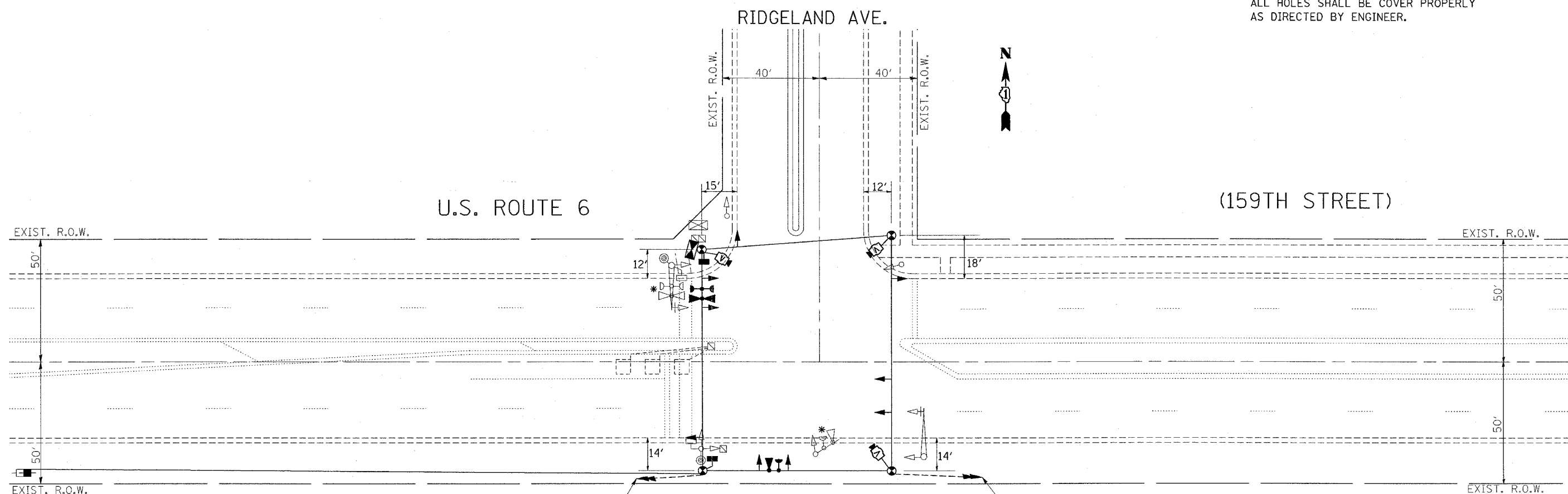
THE FOLLOWING ITEMS SHALL BE REMOVED BY THE CONTRACTOR AND SHALL BE DISPOSED OF BY THEM OUTSIDE OF THE RIGHT-OF-WAY AT THEIR EXPENSE. THE SALVAGE VALUE OF THE REMOVED EQUIPMENT SHALL BE REFLECTED IN THE CONTRACTOR BID PRICE.

- 1 EACH CONTROLLER AND CABINET (COMPLETE)
- 1 EACH 3 SECTION, MAST ARM MOUNTED
- 1 EACH 5 SECTION, MAST ARM MOUNTED
- 3 EACH 3 SECTION BRACKET MOUNTED
- 2 EACH 5 SECTION BRACKET MOUNTED
- 1 EACH 2-FACE, 1-3 SECTION, 1-5 SECTION BRKT. MNTED.
- 2 EACH PEDESTRIAN SIGNAL HEAD
- 2 EACH PEDESTRIAN PUSH BUTTON
- 2 EACH MAST ARM AND ASSEMBLY
- 4 EACH TRAFFIC SIGNAL POST

* STORE EXISTING EMERGENCY VEHICLE PREEMPTIONS FOR PROPOSED LOCATION.

CONSTRUCTION NOTE:

ALL HOLES SHALL BE COVER PROPERLY AS DIRECTED BY ENGINEER.



PROPOSED INTERCONNECT TO OAK PARK AVE.

PROPOSED INTERCONNECT TO ARROYO DRIVE

THE TRAFFIC SIGNAL CONTROL EQUIPMENT FOR THIS PROJECT SHALL BE "EAGLE" TO MATCH THE EXISTING ADJACENT SYSTEM.

RESTORATION OF WORK AREA. RESTORATION OF THE TRAFFIC SIGNAL WORK AREA SHALL BE INCLUDED IN THE RELATED PAY ITEMS SUCH AS FOUNDATION, CONDUIT, HANDHOLE, TRENCH AND BACKFILL, ETC. ALL ROADWAY SURFACES SUCH AS SHOULDERS, MEDIANS, SIDEWALKS, PAVEMENT, ETC. SHALL BE REPLACED IN KIND. ALL DAMAGE TO MOWED LAWNS SHALL BE REPLACED WITH AN APPROVED SOD AND ALL DAMAGE TO UNMOWED FIELDS SHALL BE SEEDED. RESTORATION OF THE WORK AREA SHALL BE INCIDENTAL TO THE CONTRACT WITHOUT ANY EXTRA COMPENSATION ALLOWED TO THE CONTRACTOR.

REVISIONS	
NAME	DATE

ILLINOIS DEPARTMENT OF TRANSPORTATION
**TEMPORARY TRAFFIC SIGNAL
 INSTALLATION PLAN
 U.S. RTE. 6 AT RIDGELAND AVE.**

SCALE: VERT. 1:250
 HORIZ.
 DATE 3/28/2007

DRAWN BY BCK
 DESIGN BY BCK
 CHECKED BY DAD