

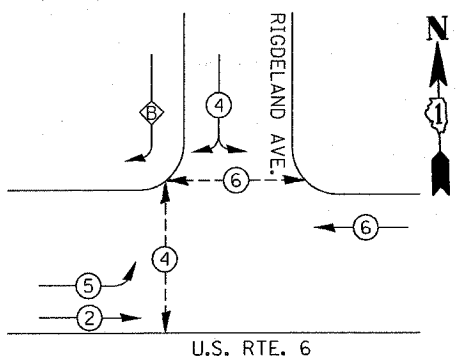
| F.A.P. RTE. | SECTION | COUNTY | TOTAL SHEETS | SHEET NO. |
|--------------|----------|---------------------------|--------------|-----------|
| 351 | 537 W-TS | COOK | 14 | 10 |
| STA. TO STA. | | ILLINOIS FED. AID PROJECT | | |

CABLE PLAN LEGEND

| EXISTING | PROPOSED | EXISTING | PROPOSED | DESCRIPTION |
|----------|----------|----------|----------|---|
| (G) | (G) | (2) | (2) | 8" (200mm) TRAFFIC SIGNAL SECTION |
| (R) | (R) | (24) | (24) | 12" (300mm) TRAFFIC SIGNAL SECTION |
| (W) | (W) | (R) | (R) | 12" (300mm) PEDESTRIAN SIGNAL SECTION |
| (P) | (P) | (Y) | (Y) | 12" (300mm) PEDESTRIAN SIGNAL SECTION |
| (C) | (C) | (G) | (G) | CONTROLLER CABINET |
| (S) | (S) | (Y) | (Y) | SERVICE INSTALLATION |
| (T) | (T) | (G) | (G) | TELEPHONE CONNECTION |
| (V) | (V) | (P) | (P) | VEHICLE DETECTOR, INDUCTION LOOP |
| (M) | (M) | (H) | (H) | MAGNETIC DETECTOR |
| (E) | (E) | (C) | (C) | EMERGENCY VEHICLE LIGHT DETECTOR |
| (B) | (B) | (P) | (P) | CONFIRMATION BEACON |
| (D) | (D) | (S) | (S) | PUSHBUTTON DETECTOR |
| (1) | (1) | (B) | (B) | GROUND CABLE IN CONDUIT NO. 6 SOLID COPPER (GREEN) |
| | | | | DENOTES NUMBER OF CONDUCTORS, ALL CABLE NO. 14 EXCEPT AS INDICATED. ALL LOOP DETECTOR CABLE TO BE SHIELDED. |
| | | | | FIBER OPTIC CABLE IN CONDUIT NO. 62.5/125 MM12F SM12F |
| | | | | SIGNAL FACE WITH BACKPLATE, "P" INDICATES PROGRAMMED HEAD |
| | | | | RAILROAD CONTROL CABINET |
| | | | | GROUND ROD AT HANDHOLE (H), DOUBLE HANDHOLE (H), OR CONTROLLER (C). |
| | | | | GROUND ROD AT POST (P), OR MAST ARM POLE (MA). |
| | | | | GROUND ROD AT ELECTRIC SERVICE INSTALLATION |
| | | | | UNINTERRUPTIBLE POWER SUPPLY |

LEGEND

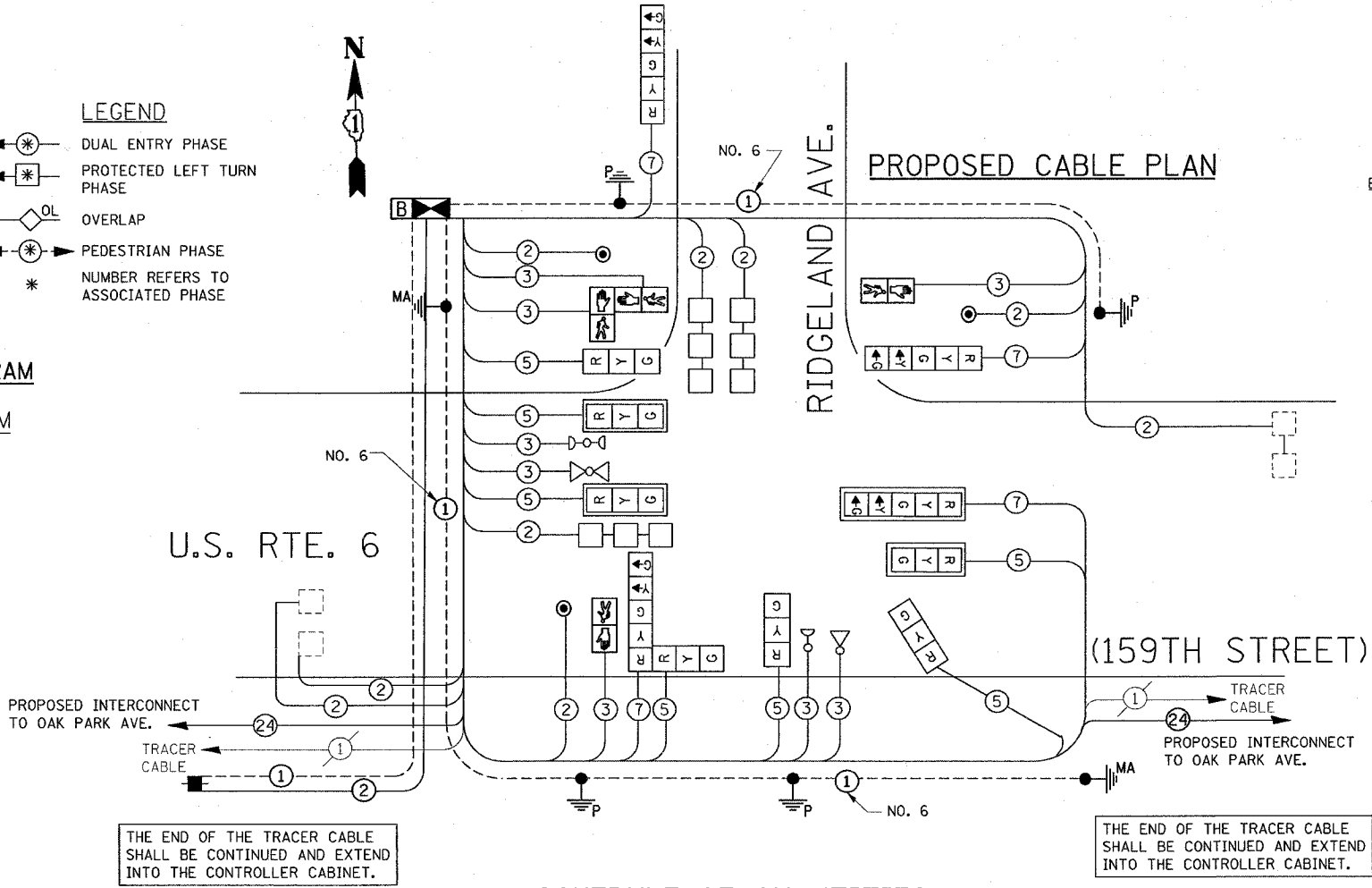
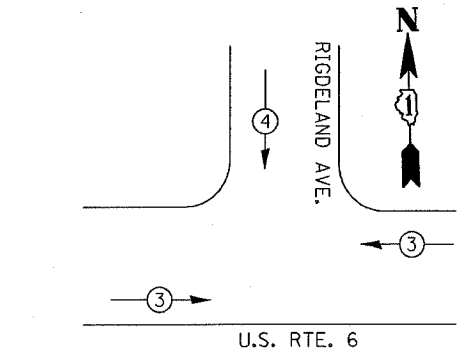
- (*) DUAL ENTRY PHASE
- (*) PROTECTED LEFT TURN PHASE
- (OL) OVERLAP
- (*) PEDESTRIAN PHASE
- (*) NUMBER REFERS TO ASSOCIATED PHASE



PROPOSED PHASE DESIGNATION DIAGRAM

RIGHT TURN OVERLAP PHASE DIAGRAM

| OVERLAP LETTER | PERMISSIVE PHASE | PROTECTED PHASE |
|----------------|------------------|-----------------|
| B | 4 | 5 |



SCHEDULE OF QUANTITIES

| ITEM | UNIT | QUANTITY | ITEM | UNIT | QUANTITY |
|--|---------|----------|---|------|----------|
| TRAFFIC CONTROL AND PROTECTION, STANDARD 701501 | L SUM | .25 | STEEL MAST ARM ASSEMBLY AND POLE, 34 FT. | EACH | 1 |
| TRAFFIC CONTROL AND PROTECTION, STANDARD 701601 | L SUM | .25 | CONCRETE FOUNDATION, TYPE A | FOOT | 16 |
| TRAFFIC CONTROL AND PROTECTION, STANDARD 701701 | L SUM | .25 | CONCRETE FOUNDATION, TYPE C | FOOT | 4 |
| TRAFFIC CONTROL AND PROTECTION, STANDARD 701801 | L SUM | .25 | CONCRETE FOUNDATION, TYPE E 30-INCH DIA. | FOOT | 15 |
| SIGN PANEL - TYPE 1 | SO. FT. | 36 | THERMOPLASTIC PAVEMENT MARKING-LINE 4" | FOOT | 500 |
| CONDUIT IN TRENCH, 2" DIA., GALVANIZED STEEL | FOOT | 518 | THERMOPLASTIC PAVEMENT MARKING-LINE 6" | FOOT | 215 |
| CONDUIT IN PUSH, 2" DIA., GALVANIZED STEEL | FOOT | 90 | THERMOPLASTIC PAVEMENT MARKING-LINE 24" | FOOT | 120 |
| CONDUIT IN PUSH, 2 1/2" DIA., GALVANIZED STEEL | FOOT | 15 | SIGNAL HEAD, L.E.D. 1-FACE, 3 SECTION, MAST ARM MNTD. | EACH | 3 |
| CONDUIT IN TRENCH, 2 1/2" DIA., GALVANIZED STEEL | FOOT | 137 | SIGNAL HEAD, L.E.D. 1-FACE, 5 SECTION, MAST ARM MNTD. | EACH | 1 |
| CONDUIT IN PUSH, 4" DIA., GALVANIZED STEEL | FOOT | 194 | SIGNAL HEAD, L.E.D. 1-FACE, 3 SECTION, BRACKET MNTD. | EACH | 3 |
| TRENCH AND BACKFILL FOR ELECTRICAL WORK | FOOT | 600 | SIGNAL HEAD, L.E.D. 1-FACE, 5 SECTION, BRACKET MNTD. | EACH | 2 |
| FULL-ACTUATED CONTROLLER AND TYPE IV CABINET (SPECIAL) | EACH | 1 | SIGNAL HEAD, L.E.D. 2-FACE, 1-3 SECTION 1-5 SECTION BRACKET MNTD. | EACH | 1 |
| ELECTRIC CABLE IN CONDUIT, SIGNAL NO. 14 2C | FOOT | 322 | PEDESTRIAN PUSH-BUTTON | EACH | 3 |
| ELECTRIC CABLE IN CONDUIT, SIGNAL NO. 14 3C | FOOT | 902.5 | PEDESTRIAN SIGNAL HEAD, L.E.D., 1-FACE, BRKT. MNTD. | EACH | 2 |
| ELECTRIC CABLE IN CONDUIT, SIGNAL NO. 14 5C | FOOT | 955 | PEDESTRIAN SIGNAL HEAD, L.E.D., 2-FACE, BRKT. MNTD. | EACH | 1 |
| ELECTRIC CABLE IN CONDUIT, SIGNAL NO. 14 7C | FOOT | 596.5 | INDUCTIVE LOOP DETECTOR | EACH | 6 |
| ELECTRIC CABLE IN CONDUIT, LEAD-IN, NO. 14 1 PAIR | FOOT | 990 | DETECTOR LOOP TYPE I | FOOT | 185 |
| ELECTRIC CABLE IN CONDUIT, SERVICE, NO. 6 2C | FOOT | 361 | TRAFFIC SIGNAL BACKPLATE, LOUVERED, ALUMINUM | EACH | 4 |
| ELECTRIC CABLE IN CONDUIT, GROUNDING, NO. 6 1C | FOOT | 620 | REMOVE EXISTING TRAFFIC SIGNAL EQUIPMENT | EACH | 1 |
| GROUNDING EXISTING HANDHOLE FAME AND COVER | EACH | 1 | REMOVE EXISTING CONCRETE FOUNDATION | EACH | 9 |
| HANDHOLE | EACH | 1 | REMOVE EXISTING HANDHOLE | EACH | 3 |
| HEAVY-DUTY HANDHOLE | EACH | 1 | REMOVE ELECTRIC CABLE FROM CONDUIT | FOOT | 1426.5 |
| DOUBLE HANDHOLE | EACH | 1 | UNINTERRUPTIBLE POWER SUPPLY | EACH | 1 |
| TRAFFIC SIGNAL POST, GALVANIZED STEEL 16FT. | EACH | 3 | DRILL EXISTING HANDHOLE | EACH | 2 |
| TRAFFIC SIGNAL POST, GALVANIZED STEEL 18FT. | EACH | 1 | MAINTENANCE OF EXISTING TRAFFIC SIGNAL INSTALLATION | EACH | 2 |
| STEEL MAST ARM ASSEMBLY AND POLE, 22 FT. | EACH | 1 | | | |

CONSTRUCTION NOTE:
ALL HOLES SHALL BE COVER PROPERLY AS DIRECTED BY ENGINEER.

THE TRAFFIC SIGNAL CONTROL EQUIPMENT FOR THIS PROJECT SHALL BE "EAGLE" TO MATCH THE EXISTING ADJACENT SYSTEM.

PROPOSED EMERGENCY VEHICLE PREEMPTION SEQUENCE

| EMERGENCY VEHICLE PREEMPTOR | 3 | 4 |
|-----------------------------|---|---|
| MOVEMENT | ← | ↔ |

I.D.O.T. TRAFFIC SIGNAL INSTALLATION ELECTRICAL SERVICE REQUIREMENTS

| TYPE | NO. LAMPS | WATTAGE (INCAND.) | LED | % OPERATION | TOTAL WATTAGE |
|--------------|-----------|-------------------|-----|-------------|---------------|
| SIGNAL (RED) | 11 | 135 | 17 | 0.50 | 93.50 |
| (YELLOW) | 15 | 135 | 25 | 0.25 | 93.75 |
| (GREEN) | 15 | 135 | 15 | 0.25 | 56.25 |
| ARROW | 8 | 135 | 12 | 0.10 | 9.60 |
| PED. SIGNAL | 4 | 90 | 25 | 1.00 | 100.00 |
| CONTROLLER | 1 | 100 | 100 | 1.00 | 100.00 |
| ILLUM. SIGN | | 84 | | 0.05 | |
| FLASHER | | | | 0.50 | |
| TOTAL = | | | | | 453.1 |

ENERGY COSTS TO:
ILLINOIS DEPARTMENT OF TRANSPORTATION
201 WEST CENTER COURT
SCHAUMBURG, ILLINOIS 60196-1096
CONTACT: 847-816-5331
PHONE: 847-816-5331
COMPANY: COMMONWEALTH EDISON

REVISIONS

| NAME | DATE |
|------|------|
| | |
| | |
| | |
| | |
| | |

ILLINOIS DEPARTMENT OF TRANSPORTATION
PROPOSED CABLE PLAN AND PROPOSED PHASE DESIGNATION DIAGRAM
IL. RTE. 6 AT RIDGELAND AVE.
SCALE: NONE
DATE 3/28/2007
DRAWN BY BCK
DESIGNED BY BCK
CHECKED BY DAD