

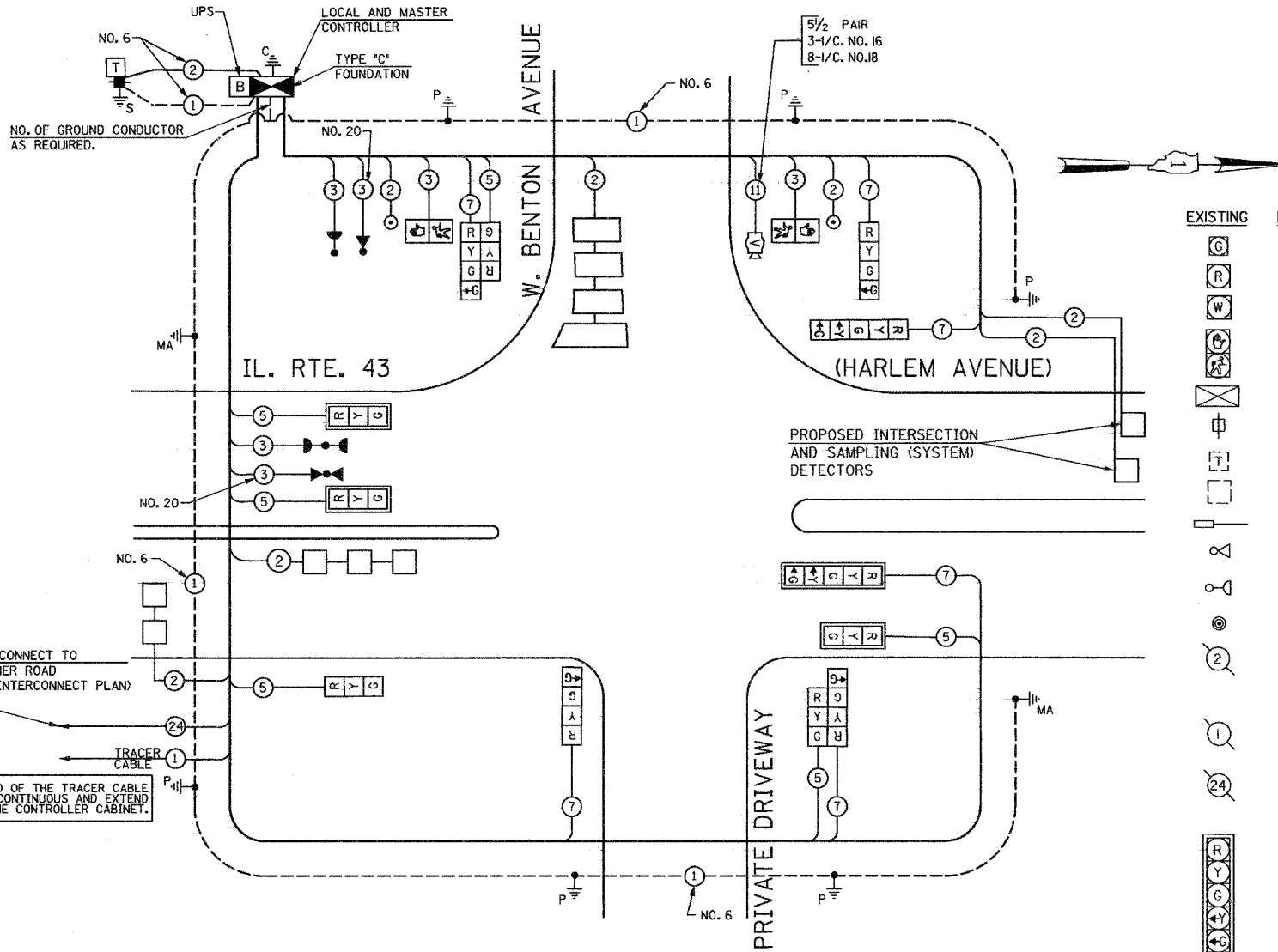
SCHEDULE OF QUANTITIES

QUANTITY	UNIT	ITEM
260	SQ.FT.	PORTLAND CEMENT CONCRETE SIDEWALK 5 INCH
32	FOOT	COMBINATION CURB AND GUTTER REMOVAL
220	SQ.FT.	SIDEWALK REMOVAL
32	FOOT	COMBINATION CONCRETE CURB AND GUTTER, TYPE B-6.12
20	SQ FT.	SIGN PANEL - TYPE 1
12.5	SQ FT.	SIGN PANEL - TYPE 2
83	FOOT	POLYUREA PAVEMENT MARKING TYPE I - LINE 6"
77	FOOT	POLYUREA PAVEMENT MARKING TYPE I - LINE 24"
571	FOOT	CONDUIT IN TRENCH, 2" DIA., GALVANIZED STEEL
180	FOOT	CONDUIT IN TRENCH, 2 1/2" DIA., GALVANIZED STEEL
34	FOOT	CONDUIT IN TRENCH, 4" DIA., GALVANIZED STEEL
58	FOOT	CONDUIT PUSHED, 2 1/2" DIA., GALVANIZED STEEL
152	FOOT	CONDUIT PUSHED, 4" DIA., GALVANIZED STEEL
1	EACH	HANDHOLE
4	EACH	HEAVY-DUTY HANDHOLE
1	EACH	DOUBLE HANDHOLE
790	FOOT	TRENCH AND BACKFILL FOR ELECTRICAL WORK
1	EACH	FULL-ACTUATED CONTROLLER AND TYPE V CABINET, SPECIAL
1	EACH	TRANSCIEVER-FIBER OPTIC
167	FOOT	ELECTRIC CABLE IN CONDUIT, SIGNAL NO. 14 2C
321	FOOT	ELECTRIC CABLE IN CONDUIT, SIGNAL NO. 14 3C
855	FOOT	ELECTRIC CABLE IN CONDUIT, SIGNAL NO. 14 5C
1012	FOOT	ELECTRIC CABLE IN CONDUIT, SIGNAL NO. 14 7C
1305	FOOT	ELECTRIC CABLE IN CONDUIT, LEAD-IN, NO. 14 1 PAIR
31	FOOT	ELECTRIC CABLE IN CONDUIT, SERVICE, NO. 6 2C
1	EACH	TRAFFIC SIGNAL POST, GALVANIZED STEEL 14 FT.
2	EACH	TRAFFIC SIGNAL POST, GALVANIZED STEEL 15 FT.
1	EACH	TRAFFIC SIGNAL POST, GALVANIZED STEEL 16 FT.
2	EACH	TRAFFIC SIGNAL POST, GALVANIZED STEEL 18 FT.
1	EACH	STEEL MAST ARM ASSEMBLY AND POLE, 26 FT.
1	EACH	STEEL MAST ARM ASSEMBLY AND POLE, 32 FT.
24	FOOT	CONCRETE FOUNDATION, TYPE A
4	FOOT	CONCRETE FOUNDATION, TYPE C
10	FOOT	CONCRETE FOUNDATION, TYPE E 30-INCH DIAMETER
15	FOOT	CONCRETE FOUNDATION, TYPE E 36-INCH DIAMETER
3	EACH	SIGNAL HEAD, L.E.D., 1-FACE, 3-SECTION, MAST ARM MOUNTED
1	EACH	SIGNAL HEAD, L.E.D., 1-FACE, 3-SECTION, BRACKET MOUNTED
2	EACH	SIGNAL HEAD, LED, 1-FACE, 4-SECTION, BRACKET MOUNTED
1	EACH	SIGNAL HEAD, L.E.D., 1-FACE, 5-SECTION, BRACKET MOUNTED
1	EACH	SIGNAL HEAD, L.E.D., 1-FACE, 5-SECTION, MAST ARM MOUNTED
2	EACH	SIGNAL HEAD, L.E.D., 2-FACE, 1-3 SECTION, 1-4 SECTION, BRACKET MOUNTED
2	EACH	PEDESTRIAN SIGNAL HEAD, L.E.D., 1-FACE, BRACKET MOUNTED
4	EACH	TRAFFIC SIGNAL BACKPLATE
5	EACH	INDUCTIVE LOOP DETECTOR
410	FOOT	DETECTOR LOOP, TYPE 1
2	EACH	LIGHT DETECTOR
1	EACH	LIGHT DETECTOR AMPLIFIER
2	EACH	PEDESTRIAN PUSH-BUTTON
1	EACH	SERVICE INSTALLATION, POLE MOUNTED
1	EACH	UNINTERRUPTABLE POWER SUPPLY
579	FOOT	ELECTRIC CABLE IN CONDUIT, GROUNDING, NO. 6 1C (GREEN)
136	FOOT	ELECTRIC CABLE IN CONDUIT NO. 20 3/C, TWISTED, SHIELDED
1	EACH	VIDEO DETECTION SYSTEM COMPLETE INTERSECTION

• 100% COST TO FRANKFORT FIRE PROTECTION DISTRICT

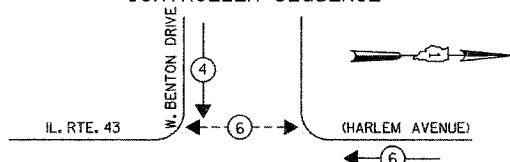
I.D.O.T. TRAFFIC SIGNAL INSTALLATION ELECTRICAL SERVICE REQUIREMENTS					TOTAL WATTAGE
TYPE	NO LAMPS	WATTAGE		OPERATION	
		INCAND.	LED		
SIGNAL (RED)	12	135	17	0.50	102.0
(YELLOW)	12	135	25	0.25	75.0
(GREEN)	12	135	15	0.25	45.0
ARROW	8	135	12	0.10	9.6
PED. SIGNAL	2	90	25	1.00	50.0
CONTROLLER ILLUM. SIGN	1	100	100	1.00	100.0
FLASHER				0.50	
ENERGY COSTS TO:					TOTAL = 381.6
ILLINOIS DEPARTMENT OF TRANSPORTATION 201 WEST CENTER COURT SCHAMBURG, ILLINOIS 60196-1096					
ENERGY SUPPLY CONTACT: Ms. DOLORES KREMNITZER PHONE: (815) 724-5241 COMPANY: COMED-EDISON					

FOUNDATION (DEPTH)	FT. (m)	CABLE SLACK	FT. (m)	VERTICAL	FT. (m)
TYPE A-POST	4 (1.2)	HANDHOLE	6.5 (2.0)	ALL FOUNDATIONS	3.5 (1.0)
D-CONTROLLER	4 (1.2)	DOUBLE HANDHOLE	13 (4.0)	MAST ARM (L) POLE	20'-H-2'
F-M ARM POLE		SIGNAL POST	2 (0.6)	(6m-H-0.6m)=	
24" (600mm)	10 (3.0)	CONTROLLER CAB.	1 (0.5)	BRACKET MOUNTED	13 (4.0)
30" (750mm)	15 (4.6)	FIBER OPTIC	13 (4.0)	PED. PUSHBUTTON	4 (1.2)
		ELECTRIC SERVICE	1 (0.5)	ELECTRIC SERVICE	13.5 (4.1)
		GROUND CABLE	1 (0.5)	SERVICE TO GROUND	13.5 (4.1)
				POST MOUNTED	6 (1.8)

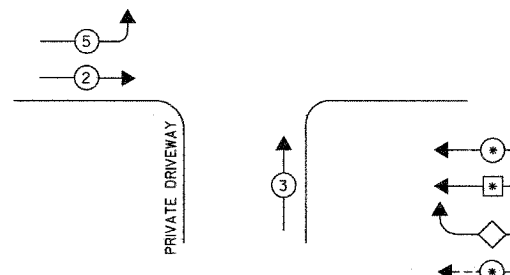


CABLE PLAN
NOT TO SCALE

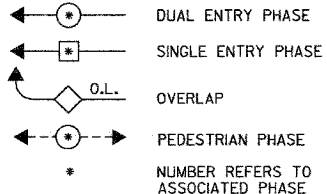
CONTROLLER SEQUENCE



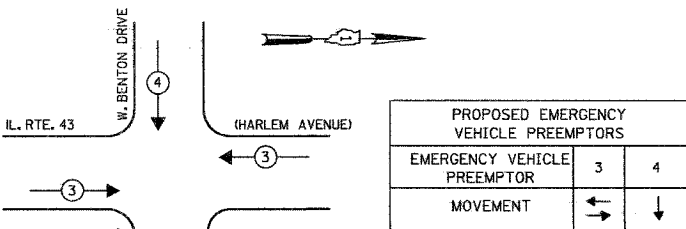
PHASE DESIGNATION DIAGRAM



LEGEND



EMERGENCY VEHICLE PREEMPTION SEQUENCE



THE TRAFFIC SIGNAL CONTROL EQUIPMENT FOR THIS PROJECT SHALL BE "EAGLE" TO MATCH THE EXISTING ADJACENT SYSTEM.

GO GANDHI AND ASSOCIATES, INC.
ENGINEERS AND PLANNERS
6035 N. NORTHWEST HIGHWAY
SUITE 306
CHICAGO, ILLINOIS 60631 TEL: (773) 774-5910

REVISIONS	
NAME	DATE

ILLINOIS DEPARTMENT OF TRANSPORTATION
CABLE PLAN
PHASE DESIGNATION DIAGRAM
EMERGENCY VEHICLE PREEMPTION SEQUENCE
AND SCHEDULE OF QUANTITIES
IL. RTE. 43 AT W. BENTON DRIVE

SCALE: NONE
DATE: 03/08/2007

DRAWN BY: KGP
DESIGNED BY: PKG
CHECKED BY: PKG

F.A.P. RTE.	SECTION	COUNTY	TOTAL SHEETS	SHEET NO.
348	2006-045TS	WILL	12	8

CONTRACT # 60C16

CABLE PLAN LEGEND

EXISTING	PROPOSED	DESCRIPTION
		8" (200mm) TRAFFIC SIGNAL SECTION
		12" (300mm) TRAFFIC SIGNAL SECTION
		12" (300mm) PEDESTRIAN SIGNAL SECTION
		CONTROLLER CABINET
		SERVICE INSTALLATION
		TELEPHONE INSTALLATION
		VEHICLE DETECTOR, INDUCTION LOOP
		MAGNETIC DETECTOR
		EMERGENCY VEHICLE LIGHT DETECTOR
		CONFIRMATION BEACON
		PUSH-BUTTON DETECTOR
		2 DENOTES NUMBER OF CONDUCTORS, ALL CABLE NO. 14 EXCEPT AS INDICATED. ALL LOOP DETECTOR CABLE TO BE SHIELDED.
		1 GROUND CABLE IN CONDUIT NO. 6 SOLID COPPER (GREEN)
		24 FIBER OPTIC CABLE IN CONDUIT NO. 62.5/125 2-MM12F & SM12F
		SIGNAL FACE WITH BACKPLATE. *P* INDICATES PROGRAMMED HEAD.
		RAILROAD CONTROL CABINET
		ILLUMINATED SIGN, FIBER OPTIC "NO LEFT TURN"
		ILLUMINATED SIGN, FIBER OPTIC "NO RIGHT TURN"
		H/C GROUND ROD AT HANDHOLE, DOUBLE HANDHOLE, OR CONTROLLER
		P GROUND ROD AT POST OR MAST ARM POLE
		S GROUND ROD AT ELECTRIC SERVICE INSTALLATION
		V VIDEO DETECTION CAMERA (SINGLE)
		B UPS - BATTERY BACK-UP SYSTEM