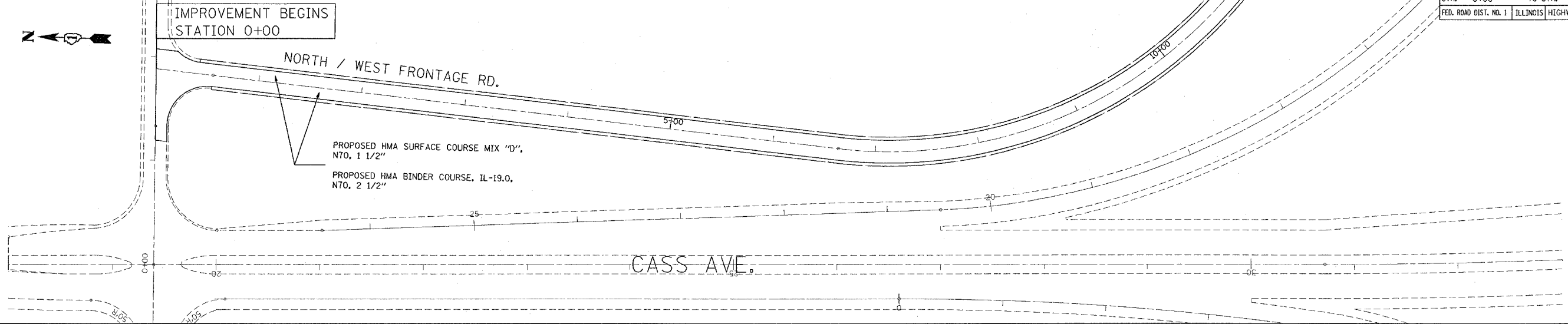
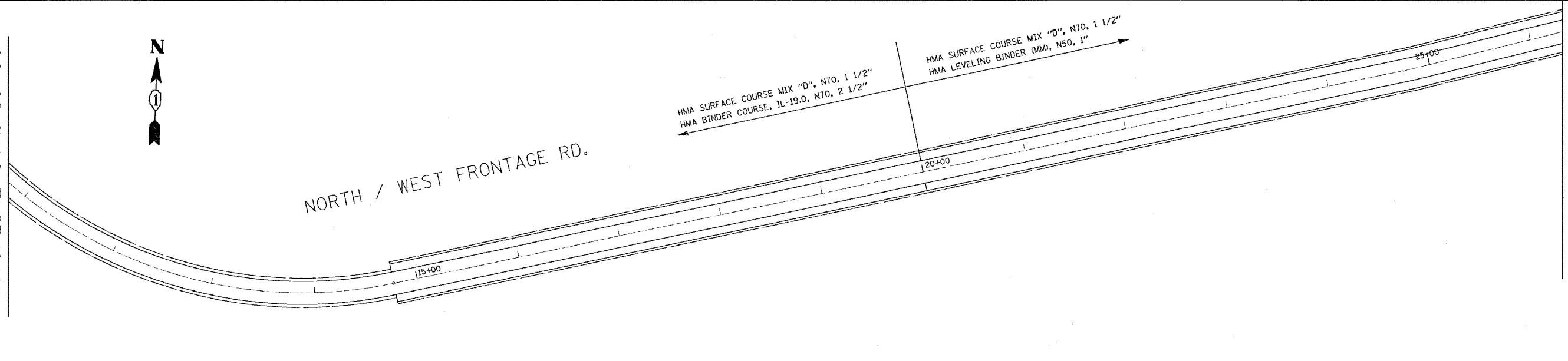
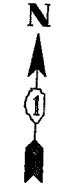


F.A.I. RTE.	SECTION	COUNTY	TOTAL SHEETS	SHEET NO.
55	2006-017 RS	DU PAGE & WILL	12	5
STA. 0+00		TO STA. 41+26		
FED. ROAD DIST. NO. 1 ILLINOIS HIGHWAY PROJECT				

MATCHLINE STA. 10+80

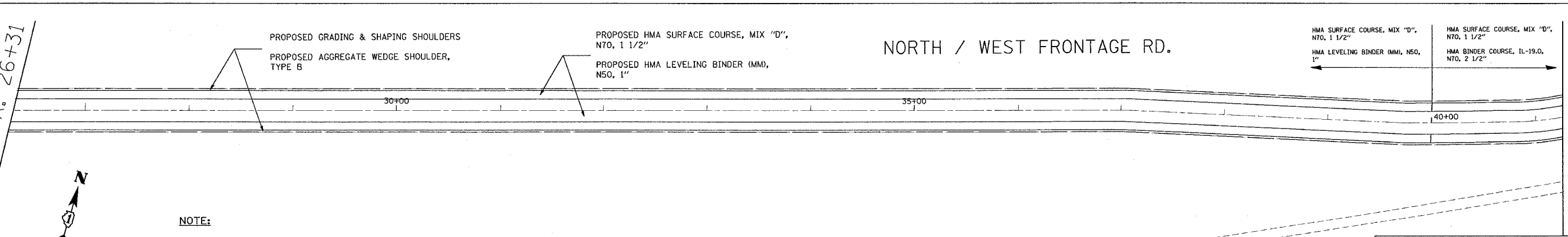


MATCHLINE STA. 10+80



MATCHLINE STA. 26+31

MATCHLINE STA. 26+31



MATCHLINE STA. 41+26

**NOTE:**  
 LIMIT OF RESURFACING ON SIDE ROADS AND STREETS SHALL BE TO THE RADIUS OF RETURN OR AS DIRECTED BY THE ENGINEER.  
 ALL PERMANENT PAVEMENT MARKINGS SHALL BE THERMOPLASTIC UNLESS OTHERWISE NOTED. SEE "DISTRICT ONE TYPICAL PAVEMENT MARKINGS," DETAIL (TC-13).  
 RAISED REFLECTIVE PAVEMENT MARKERS SHALL BE USED THROUGHOUT THE IMPROVEMENT LIMIT. SEE "DISTRICT ONE TYPICAL APPLICATIONS RAISED REFLECTIVE PAVEMENT MARKERS," DETAIL (TC-11).

REVISIONS	
NAME	DATE

ILLINOIS DEPARTMENT OF TRANSPORTATION  
 I-55: (NORTH FRONTAGE RD.)  
 CLARENDON HILLS RD. TO CASS AVE.  
 SCALE: VERT. 1"=50'  
 HORIZ. 1"=50'  
 DATE 4/2/2007  
 DRAWN BY  
 CHECKED BY

4/2/2007  
 c:\p\proj\60b41\131066\design\ao.dgn  
 REF-  
 VI=

I-55